

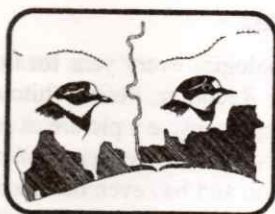
Shoreham District Ornithological Society

ANNUAL REPORT 1998



No 46

Price £3.00



**SHOREHAM
DISTRICT
ORNITHOLOGICAL
SOCIETY**

ANNUAL REPORT 1998

CONTENTS

PAGE

Editorial.....	2
Birding Highlights and Notes for 1998	3
Guide to Recording Birds in SDOS area	6
Systematic List for 1998.....	7
Escapes and Ferals	47
Additions to 1997 Report	47
Update of Rarity Records	47
Arrival and Departure of Migrants	48
Ringling Report	49
Steynling Ringling Group Report	52
Sanctuary Report	54
Worthing Seawatching Report.....	56
Indoor Meetings	60
Field Trips	61
Garden Bird Feeding Survey 1998/9	64
Boundaries of Recording Area	64
Society Officers.....	65
Society Accounts.....	66
About SDOS and membership application form	67

EDITORIAL

It has become traditional for the editor to apologise every year for the late appearance of the annual report. However, our Recorder, Peter Whitcomb and I both feel that the report should present as comprehensive a picture as possible of the birds recorded in our area. The Recorder's work in preparing the systematic list is considerable (and he does have a day job and has even occasionally been seen out birdwatching himself) so it is not surprising that everything takes much longer than in the more leisured days of the not-so-distant past.

We are lucky to be able to incorporate records from the SOS database which are kindly supplied by John Newnham. However the processing of these records which is all done by volunteers also takes time, and thus Peter has to wait for the data to be available before he can start work. This year further delay was inevitable because just as Peter's typescript was arriving on my doormat, I took delivery of a new computer.

Thanks to Terry Hicks who obtained and installed a computer for the SDOS Recorder's use, this year Peter was able to supply all the text to me on floppy disk. Almost all the other contributors did likewise thus greatly reducing my typing burden. This means I only had to make it all fit into the pages, sort out the illustrations and tables and so on. I fear even this takes longer than you think.

We have been especially fortunate this year to have some splendid line drawings from well-known local artist, John Reaney to add to those of our regular artist, Richard Ives. I would like to thank both for their excellent contributions.

I would also like to thank Brian Clay for arranging the printing and my husband, Chris, for helping with the scanning of the drawings and checking the text.

Especially if you do not currently submit your records, please refer to page 6 to see how you can help to make this report even better.

Pat Mulcock

Details of illustrations

John Reaney - Peregrine (cover), Arctic Skua (p3), and Cormorants (p10).

Richard Ives - Pallas's Warbler (p5), Little Auk (p29), Brambling (p44), Corn Bunting (p46), Mediterranean Gull (p59), Short-eared Owl (p61).

BIRDING HIGHLIGHTS AND NOTES FOR 1998

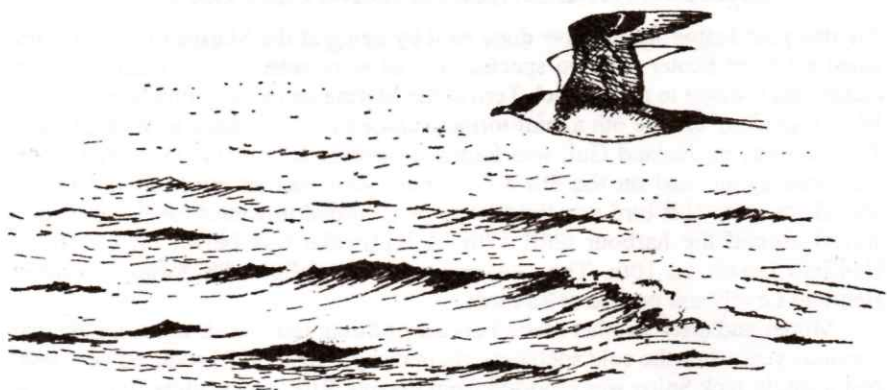
Anyone year-listing would have done well by being at the Marina on 1st January when a Velvet Scoter and two species of skua were seen. Strong winds and wet conditions brought in a Sandwich Tern at the Marina and a Grey Phalarope off the West Pier (5th). On the 6th a mini-tornado caused much damage in West Sussex. The next day an Iceland Gull was found at Shoreham Fort, the Grey Phalarope was seen again, and on the 8th a Common Tern was an unusual find in the Shoreham area. This bird was the first to be recorded in winter for the area, and stayed around the harbour until 17th. A Kittiwake was blown off course to Henfield Levels on 10th. The now-regular herd of Bewick's Swans favoured Henfield Levels and peaked at 28 birds.

Milder and drier weather made February birding rather a struggle. Unlike the previous year when the cold spell brought in many birds, 1998 produced very few. Just a single Jack Snipe was reported from Ferring Rife, and a Snow Bunting was heard only at Lower Standean. There were 2 Twite at Sheepcote on 21st. A huge roost count of c12,000 Common Gulls was at Southwick on 25th.

The mild and sunny weather continued into March. Another record count at Southwick produced 8,000 Black-headed Gulls on 22nd. There was a classic passage day on 28th with light SE winds and drizzle producing the peak Brent Goose movement, a Red-necked Grebe at Worthing and Garganey at Marina. An unsubstantiated report the same day of an adult Ring-billed Gull from the Adur is still awaiting news from SOS. A Great Grey Shrike was found near Cissbury on 30th, staying well into April but covering a wide area in the vicinity.

April was predominantly wet with below-average temperatures, with northerly winds on 15th bringing snow. More normally recorded on seawatches, an Avocet was reported on the Lower Adur on 19th. Another good passage day on 22nd produced 181 Whimbrel and Black-necked Grebe at Marina, and 7E Velvet Scoter at Worthing. Mention should be made here of the successful erection of a nestbox for Peregrines on Sussex Heights, Brighton, later rearing 2 young to flying stage. Other breeding successes were a Wheatear at Southwick, Grey Wagtails at 2 sites and a number of Stonechats. Cuckoos, on the other hand, seemed scarce and one wonders if they are taken for granted or now becoming quite a rare summer visitor to our area?

May was warm, dry and settled. Not surprisingly most of the highlights stemmed from the seawatching sites. Records from the Marina included a peak 48 Manx Shearwaters (6th), peak 31 Pomarine Skuas (12th), Roseate Tern (13th), 2 Red-necked Grebes (19th) and Puffin (28th). It wasn't all seabirds either, with somewhat unusual sightings of Corn Bunting, Carrion Crow, Long-eared Owl and Nightjar coming in off the sea. Worthing had 2E Garganey (8th) and a Black Kite (22nd). Elsewhere a Leach's Petrel was reported off Shoreham on 8th, an Alpine Swift was seen at Worthing on 14th, a Marsh Harrier seen by seawatchers at both Worthing and Brighton (16th) and an Osprey flew east over Hollingdean on 28th. There was also news of a possible Pallid or Montagu's Harrier late afternoon at the Marina (16th) but as yet it is not known whether it was submitted to the rarities committee by the single observer.



Very wet conditions predominated in June, which also brought below average temperatures. Manx Shearwaters continued to be recorded at the Marina with 13 on 26th.

A Storm Petrel was seen off the Marina on July 11th and a Curlew Sandpiper flew west there on (14th). A week later saw the start of a good number of sightings of Mediterranean Shearwater, the 2 on 21st staying until the next day, with one lingering off the Palace Pier and photographed. There were 3E on 23rd, another in August and 3 more in September. An immature Marsh Harrier was in the Harrow Hill area on 28th.

Raptors were a feature of August, with an adult male Red-footed Falcon reported near Patcham (4th), a Marsh Harrier at Sheepcote (6th), Red Kite high over Brighton (9th), and another Marsh Harrier at Harrow Hill (18th). A Grasshopper Warbler at Adur Saltings and in gardens on 16th, proving by its appearance in this section, how scarce this species is becoming.

September produced a number of interesting sightings. A probable Honey Buzzard soared over Upper Beeding on 2nd, then on 10th a Sooty Shearwater passed the Marina and up to 8 Curlew Sandpipers were at Widewater. There were another 3 on Adur Saltings on 11th as well as an Osprey over the West Pier. The only Dotterel of the year were at Steyning Roundhill on 5-6th. Another Honey Buzzard was seen well at Sheepcote on 12th, the same day the first of two Wrynecks were found there. On 13th a massive movement of House Martins was noted with in the region of 20,000 at Sheepcote. The second Wryneck was located on 15th, staying until 20th. Two Black Swans in flight at New Salts Farm must have surprised the observer on 27th! The month ended with an Osprey fishing on the Adur at Shoreham.

A rather late Honey Buzzard flew south at Brighton on October 3rd. The next day a Firecrest was ringed at Cissbury, indicating the start of a small influx with about a dozen reported from around the area into November. A Red-necked Grebe was off Southwick (4th) and 28 Ring Ouzels at Sheepcote (7th). A Hoopoe was reported from Queen's Park, Brighton on 13th, though unsubstantiated. Very few

Redpolls or Siskins were noted. A Sooty Shearwater was seen off Goring on 24th, a Pale-bellied Brent Goose went west at the Marina (26th) and the next day a juvenile Sabine's Gull was reported there.

In early November storms brought in a Little Auk seen off the Marina arm (4th) and an unseasonable Arctic Skua at Widewater. Another skua was off Worthing (7th), and the next day a second Little Auk was found in Southwick Canal staying until 12th. A Hawfinch, now a rarity in the area, was seen by the ringers at Cissbury on 11th. The Marina undercliff bushes then became home for a Pallas's Warbler on 18th, which showed exceptionally well until the next day, when yet another Little Auk was found off the Marina. The month ended with 1,000 Fieldfare feeding on Beeding Brooks.

December produced the now regular wintering Firecrests in Brighton. Blackcaps and Chiffchaffs were also well reported but there were no Black Redstarts. A flock of 27E White-fronted Geese passed off the Marina on 3rd. The same site was responsible for the highest day count of auks (all species). on 31st - an astonishing 115W and 1420E. Lastly a note on a common species. In the past flocks in excess of 200/300 Chaffinches were commonplace. There were no large flocks reported in 1998, perhaps a change of wintering habits or a puzzling disappearance?

Peter Whitcomb, Hon Recorder



A GUIDE TO RECORDING BIRDS IN THE SDOS AREA

The following is an edited version of the guide which appeared in the 1997 Report together with a detail guidance on individual species.

The Society is keen to encourage all members to send in their records so that a complete picture of the birds of the area can be shown in this Report. As most members will already be aware of the need to report scarcer birds and all rarities, I propose to use this space to give examples of some 'grey areas' where members may be uncertain of the usefulness of reporting a record.

It really goes without saying that any bird noticed to be in decline, or to have a changed distribution should be considered important. We are fortunate to have good numbers of Corn Buntings and Skylarks, species which are in decline nationally, but what of Tree Sparrow, Sand Martin and Lesser Spotted Woodpecker? Are they really as rare as the lack of records indicates? Do Spotted Flycatchers or Grey Wagtails nest in our area? Also I have received very few reports of Cuckoos or Lesser Whitethroats. These are just a few examples and from the Recorder's point of view, it's difficult to formulate any pattern for some of the scarcer breeding birds. I would urge all members to send in records of successful or possible breeding for these species. And even a rookery count wouldn't go amiss!

Nowadays, in a good year, over 200 species are recorded in our area, ranging from the very common to the very rare. In between are species considered 'grey areas'. The following examples illustrate which records to send in:

- a large raptor soaring over Cissbury Ring. You think it's a Marsh Harrier but aren't absolutely sure. Send it in as a 'probable' as someone else may have seen the same bird further along the downs. The direction of flight would be useful.
- a flock of Wood Pigeons in a field. Again rather insignificant but if unusually, they were feeding on the tideline of beach of a large flock coming in off the sea (pigeons do migrate, especially in November) - in both cases send in the record.
- you find something rare and exciting. If it looks likely to stay, 'phone another member to share it, and help verify the sighting. It's most important that all national rarities should be submitted to the SOS with a full description. Forms are available from Robin Pepper, Scobells Farm, Boast Lane, Barcombe Lewes BN8 5DY. Please mention to the SDOS recorder that the record is under consideration. The record will be confirmed the following year if necessary.

Remember, if in doubt, send it in! The society will not mention the location of a breeding site or owl roost and confidentiality will be honoured.

Peter Whitcomb

SDOS recording forms are available from Peter Whitcomb, 99 Barnett Road Brighton BN1 7GJ. Please enclose postage with your request.

Refer to page 64 for boundaries of SDOS recording area.

SYSTEMATIC LIST FOR 1998

This systematic list of birds in the Shoreham District is based upon records submitted by the following (non members are marked*):-

S.R. Allen, V. Bentley, T. Benton, D. Buckingham, G.L. & M. Champion, B.R. Clay, A.R. Fenton, B.F. Forbes, Friends of Bevendean Down, K.B. Gillam*, M.J.Helps*, S.P. Hitchings, C. Hope, R.A. Ives, H. Jackson, L.R. Keen, A.R. Kitson*, D.H. Labdon, B. Metcalfe, C & P. Mulcock, J.A. Newnham, K. Noble, C. Piper, B. Reeve, M. Russell, R.J. Sandison, D.I. Smith, J.C. & J.M. Steedman, Steyning Ringing Group, P. Thompson*, J. Underwood, M. Walford, A.B. Watson, A. Wende, R. Westwater, A.D. Whitcomb*, I.J. Whitcomb*, P.J. Whitcomb, K. Whiteman*, C. Wright.

The recorder also thanks John Newnham for supplying additional records from the SOS database with relevant records from C. Brooks, R.J. Fairbank, J.A. Feest, J. C. Holt, and others.

Abbreviations: ad = adult, BBRC = British Birds Rarities Committee, CW = cement works, f = female, GC = golf course, ha = hectare, imm = immature, km = kilometre, juv = juvenile, m = male, (m.o.) = many observers pr = pair, SOS = Sussex Ornithological Society, sp = summer plumage, wp = winter plumage, W=West etc, yr = year. the Marina = Brighton Marina, the Airfield = Shoreham Airfield, the Fort = Shoreham Fort, the Harbour = Shoreham Harbour, the Canal = Southwick Canal, the Sanctuary = Shoreham Sanctuary.

References to **Worthing** in seawatching data include all seawatch sites unless separately identified. '**Adur**' refers to the river and associated mudflats between the footbridge and Shoreham Flyover. '**Wildpark**' includes the whole of the Local Nature Reserve namely, Hollingbury Camp, Woods, Golf Course and Moulsecoomb Wildpark.

0002 **RED-THROATED DIVER** *Gavia stellata*

Regular passage migrant and winter visitor

A single resided in Canal from Jan 17-25, possibly the same was found dead a little later. Apart from seawatching, the only other early record was 3 off Goring on Jan 25.

The monthly seawatching records were:

	Jan	Feb	Mar	Apr	May		Oct	Nov	Dec
Brighton	10	85	56	10	12		1	12	344
Worthing	6	28	3	4	4		-	4	20

Peak counts were 24E at Marina on Feb 20, and the following day 19E at Marina and 23E at Worthing. Late year peaks at Marina were 53W/9E on Dec 10 and 67W/7E the next day. About a dozen reports in Nov/Dec were received from the Canal, Goring, and off Widewater.

0003 BLACK-THROATED DIVER *Gavia arctica***Fairly scarce passage migrant**

Monthly seawatching totals of identified birds were:

	Jan	Feb	Mar	Apr	May		Oct	Nov	Dec
Brighton	3	8	15	30	22		-	1	11
Worthing	-	-	-	-	4		-	5	-

Peak counts at Marina were 4E on Feb 21, 2W/3E on Mar 10 and 9E on Apr 14. Late year peaks were 2W/3E at Worthing on Nov 7 and 4E at Marina on Dec 12. There was also 1 off Goring on Dec 7.

0004 GREAT NORTHERN DIVER *Gavia immer***Rare visitor, 1-2 most years**

An excellent year with 7 individuals recorded. A 1st winter was found on Southwick Canal on Jan 15 (IJW et al) and was well watched until 26th. Spring passage was confined to Apr with singles in breeding plumage flew E at Marina on 8th, 20th and 22nd (all IJW). Then 1W in strong winds on Oct 28 (IJW) whilst a more obliging 1st winter was found again along Southwick Canal on Nov 8-10 (ADW, IJW et al) and was present at the same time as a Little Auk. Last of the year was a 1st winter W at Marina on Dec 21 (IJW et al) which alighted offshore. (All accepted by SOS).

DIVER Species

Monthly seawatching totals of unspecified divers were:

	Jan	Feb	Mar	Apr	May		Oct	Nov	Dec
Brighton	90	116	70	41	19		-	-	104
Worthing	26	4	5	6	6		-	5	39

Peak counts were 3W/36E at Marina on Feb 22 and 6W/18E on Dec 21. At Worthing the peak was 9W/3E on Jan 24.

0007 LITTLE GREBE *Tachybaptus ruficollis***Mainly winter visitor, occasional breeder**

1-2 noted early year from Brooklands, Ferring Rife and inside the Marina; max 6 on Southwick Canal on Jan 23 and Feb 14; also 6 at Adur Tollbridge on Feb 4. A pair bred at Brooklands and Wiston Pond, both raising 2 young. High counts late year were 9 at Cuckoo Corner in Dec, elsewhere ones and twos from Brooklands, Ferring Rife and Widewater.

0009 GREAT CRESTED GREBE *Podiceps cristatus***Regular offshore for most of year**

Few noted early year with 1 on Henfield Levels on Jan 10 and 5 offshore at Worthing on 28th. Monthly seawatching totals are shown on the following page: The figures include offshore birds, but generally numbers were low the peaks were 16E on Dec 31 at Marina, and 15 on the sea at Worthing on Dec 23. Higher

counts were off Goring with 20 on Dec 1 and 45 on Dec 4.

	Jan	Feb	Mar	Apr	May		Sep	Oct	Nov	Dec
Brighton	18	12	17	4	3		1	1	2	46
Worthing	5	2	19	8	2		-	-	18	67

0010 RED-NECKED GREBE *Podiceps grisegena*

Rare winter visitor and passage migrant

Offshore birds were from Worthing - singles on Mar 28, Apr 9 and 19, Nov 29 and Dec 5. At the Marina a pair displaying on May 19, and singles on Mar 31, May 13 and Aug 20. At Southwick there was 1 on Oct 4.

0011 SLAVONIAN GREBE *Podiceps auritus*

Regular winter visitor offshore

The records for Marina were Jan - 2, Feb - 2W, Mar - 4, Apr - 1, Sep - 1 offshore, Dec - 13. The latter month included passage birds as well as 2 inside Marina on 12th and 4 offshore on 31st. Elsewhere there were 2 in summer plumage off Worthing on Mar 28 and 1 on two dates off Worthing and 2 off Goring in Dec.

0012 BLACK-NECKED GREBE *Podiceps nigricollis*

Rare winter visitor visitor

Acceptable records were: 5 off Worthing on Mar 28 (PMB, RJS) and 1 ad off Marina on Apr 22 (IJW).

0020 FULMAR *Fulmaris glacialis*

Common passage migrant, nests just outside area

Seawatching totals were as follows:

	Jan	Feb	Mar	Apr	May	Jun	Jul	Aug	Sep	Oct	Nov	Dec
Brighton E	17	122	263	697	1077	173	42	55	23	-	4	68
Brighton W	14	2	24	238	150	26	83	75	16	-	-	7
Worthing	-	-	7	16	44	6	-	5	-	-	-	-

Peaks at Marina were 14W/76E on Apr 3, 30W/86E on Apr 23 and 2W/99E on May 31. There were 2 inland records with birds seen at Brighton Station on Jun 2 (KN) and over Hanningtons, Brighton on Aug 6 (RAI).

0043 SOOTY SHEARWATER *Puffinus griseus*

Rare autumn visitor

A single off Goring Beach on Oct 24 has been accepted by SOS (DS).

0046 MEDITERRANEAN SHEARWATER *Puffinus yelkouan*

Rare autumn visitor

Another excellent year, all records coming from the Marina: 2 lingered on the sea from Jul 21-22; 3E on Jul 23; 1 off Palace Pier and photographed on Jul 24; 1 on

Jul 28; 1 on Aug 26; 2 on Sep 7; 1 on Sep 11 (KBG, IJW), most dates accepted by SOS.

0046 MANX SHEARWATER *Puffinus puffinus*

Fairly uncommon passage migrant

The monthly totals were quite high and are listed in the table. The highest count was 48W at Marina on May 6, and 13W on Jun 26.

	Apr	May	Jun	Jul	Aug
Brighton	1	66	14	20	1
Worthing	-	7	-	1	-

0052 STORM PETREL *Hydrobates pelagicus*

Rare vagrant

One off Marina on Jul 11 has been accepted by SOS (IJW). This is the first record since 1987, and the first to be recorded in July.

0055 LEACH'S STORM PETREL *Oceanodroma leucorhoa*

Rare vagrant

One off Shoreham on May 8 has been submitted to SOS (BFF).

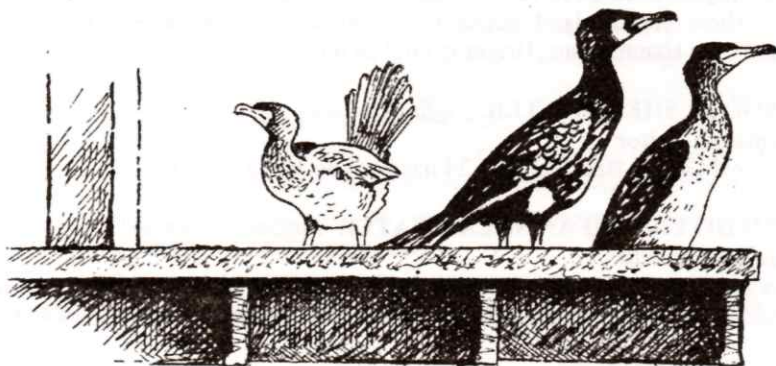
0071 GANNET *Sula bassana*

Regular offshore in most months, usually peaking in spring

One sheltered inside Marina on Jan 5 and was approachable to 5 metres. Seawatching totals were as follows:

	Jan	Feb	Mar	Apr	May	Jun	Jul	Aug	Sep	Oct	Nov	Dec
Brighton	18	86	55	510	886	558	1043	1124	596	279	28	137
Worthing	-	20	6	46	176	45	92	89	135	430	54	48

Some considerable counts from Marina included 4W/146E on Apr 23, 95W/71E on Jul 23, 73W/171E on Jul 29, 5W/210E on Aug 26 and 435W on Sep 30. At Worthing the peak count was 260W/5E on Oct 11. Other counts were 50 fishing off Brighton on Aug 3 and 20 loitering off Widewater on Oct 4.



0072 **CORMORANT** *Phalacrocorax carbo*

Common at coastal and some inland sites

Max counts for the Wyckham Farm pylon roost were Feb - 113, Aug - 88, Nov - 123, Dec - 112. Other high counts were 36 at Brooklands on Sep 29 and 65 there on Nov 26. A 'sinensis' type bird was reported from Shoreham Fort on Jan 17.

0080 **SHAG** *Phalacrocorax aristotelis*

Fairly uncommon winter visitor

Good numbers early year with peaks 6 in Southwick Canal on Jan 15, 4 at Marina on Jan 11 and 2 in Harbour on Jan 17. One bird stayed in the Canal into Feb, and birds were present at Marina until Apr 7, peaks 3 in Feb and 2 in Mar. The same sites late year yielded 1 in harbour in Nov; peak 4 in Canal on Nov 8, with 1 until 19th; and at Marina present from Sep to year end, monthly peaks being 2 in Oct/Nov and 3 in Dec.

0119 **LITTLE EGRET** *Egretta garzetta*

Once a rare vagrant, now annual in area

A better year for this species, with some birds remaining at sites for a period. 1 at Coombes Farm on Mar 2 could have been the same bird nr Beeding CW on Apr 29. There were 2 records from the Marina with 1E on Apr 29 and 1E on Jun 30. In Aug, 1 at Adur Saltings from 6th-12th, moving to Tollbridge on 17th and then noted at heron roost opp. Dacre Gdns from Aug 25-Sep 13. Possible a different bird was at King's Barn Levels from Aug 25-31. Lastly semi-resident at Ferring Rife from Aug 25 to Sep 1, and re-appearing from Oct 17 staying until year end.

0122 **GREY HERON** *Ardea cinerea*

Fairly common resident

Twenty four pairs nested at Wyckham Wood. Noted during seawatching at Marina with 2E twice in May, 1W in Sep; and 1W at Worthing in Oct, where also 2 were seen coming in off the sea N on Nov 11 (RAI). Seen regularly on Adur Saltings and Ferring Rife.

0152 **MUTE SWAN** *Cygnus olor*

Fairly common resident

Monthly peak counts at the main sites were:

	Jan	Feb	Mar	Apr	May	Jun	Jul	Aug	Sep	Oct	Nov	Dec
B'lands	36	42	28	38	-	30	-	-	59	64	39	17
Widewater	n/c	n/c	2	-	-	-	-	24	28	55	31	36
Adur levels	49	28	20	n/c	-	-	-	n/c	31	12	20	30

Early year counts were max 49 at King's Barn Levels on Jan 1, and 2 inside the Marina during Jan. Seen from Mar-Nov at both seawatching sites in small numbers, max 8W on May 19 at Marina. The only breeding records received were prs at Brooklands (5 young fledged) and Patching Pond. The only other significant count was 54 at Adur Tollbridge on Sep 6.

0153 **BEWICK'S SWAN** *Cygnus columbianus*

Scarce but regular winter visitor

Early year herd on Henfield Levels fluctuated around 24 (22 ad 2 imm) on Jan 10, 28 on Jan 14 reducing to 19 from Jan 17 to Feb 25. Late year birds favoured Wyckham Levels with 3 from Nov 8, 6 on Nov 29 and 4 on Dec 28.

0159 **WHITE-FRONTED GOOSE** *Anser brachyrhynchus*

Rare winter visitor

2E off Marina on Feb 17 (RAI) and 27E there on Dec 3 (KBG). Inland 11 were at Beeding Brooks on Dec 13 (KN).

0161 **GREYLAG GOOSE** *Anser anser*

Fairly scarce introduced resident

Small numbers were at Henfield Levels with 6 on Jan 1, 3 on Mar 8, and 1 nearby at King's Barn Levels on Apr 1. A number were recorded on Marina seawatches with totals - 1W/4E in Apr, 2W in May and 2E in Dec.

GREY GOOSE species

Unidentified geese from the Marina were 14E on Jan 8, 5W on Mar 9, 1E on Apr 14, and 4E on Apr 22.

0166 **CANADA GOOSE** *Branta canadensis*

Introduced, increasing in area, now breeding

There were large flock counts at Henfield Levels at either end of Winter periods - 138 on Jan 1 and 130 on Dec 13. A surprising number were recorded on seawatches at Marina with monthly totals: Mar - 6W, Apr - 7W/9E, and singles on 3 dates in May, including one swimming on sea on May 2. At Worthing were 1E on Apr 13, and 1W on Oct 2. No breeding records were received from Patching or Wiston ponds.

0168 **BRENT GOOSE** *Branta bernicla*

Common passage migrant and occasional winter visitor

In January a few lingered in the area with 1-2 inside the Marina, 13 in Shoreham Harbour on 9th and 3 at Widewater on 14th. The seawatching totals were as follows:

	Jan	Feb	Mar	Apr	May	Jun	Sep	Oct	Nov	Dec
Brighton	53	597	6980	1369	268	1	2	172	119	71
Worthing	29	100	1237	217	22		26	197	107	7

Peak counts from Marina included 321E on Feb 18, 1011E on Mar 26 and 1378E on Mar 30, also 108E on late date of May 20. At Worthing the peak was 809E on Mar 28, whilst there were 230 in 1hr off Shoreham the next day. Return passage commenced with 1W at Marina on Sep 18. There was a Pale-bellied Brent W on Oct 26 from Marina. Other late year records were 1NW off sea at Goring Gap on Oct 9 and 2 on Airfield on Nov 5.

0173 **SHELDUCK** *Tadorna tadorna*

Fairly common passage migrant and winter visitor

The monthly seawatching totals were as follows:

	Jan	Feb	Mar	Apr	May	Jun	Jul	Aug	Sep	Oct	Nov	Dec
Brighton	3	5	41	91	72	8	-	1	4	8	12	29
Worthing	2	4	15	39	51	-	-	9	-	2	19	16

Peak counts were 5W/29E at Marina on Apr 19 and 17E at Worthing on May 16. Inland a pair noted at King's Barn or Henfield Levels during Mar/Apr but breeding not proven. Unusually 1S over Hollingbury Camp on Oct 8.

0179 **WIGEON** *Anas penelope*

Fairly common winter visitor and passage migrant

Early year numbers peaked with 300 at Upper Adur Levels on Jan 1, but reducing drastically to 18 at Henfield Levels on 10th and 4 on Mar 8. Seawatching monthly totals were as follows:

	Jan	Feb	Mar	Apr	Aug	Sep	Oct	Nov	Dec
Brighton	3	-	73	45	-	-	-	16	3
Worthing	2	-	6	-	6	-	32	33	-

Peaks were 45E at Marina on Apr 4 and 33W at Worthing on Nov 7. There were no late year records inland.

0182 **GADWALL** *Anas strepera*

Uncommon in the area

Inland there were 2 on Henfield Levels on Jan 10, and 3 there on Mar 8, and also 2 on Beeding Levels on Feb 11. Seawatching totals at Marina were Mar - 14, May - 2, and 1W on Nov 2. There were 5E at Worthing on Mar 28.

0184 **TEAL** *Anas crecca*

Fairly common passage migrant and winter visitor

Records in Jan were 20 on Adur Levels and 12W at Worthing. In Mar there were 19 at New Salts Farm on 1st, 39 on Henfield Levels on 8th and 10 off Widewater on 23rd. Seawatch totals at Marina were Jan -2, Feb -3, Mar - 40, Apr - 2, May -7, Aug- 5, Nov -1, Dec -17, with max 26E on Mar 29 and 16E on Dec 21. Small numbers were present late year on Adur Saltings and Beeding Brooks.

0186 **MALLARD** *Anas platyrhynchos*

Common resident and winter visitor

Monthly seawatching from Marina produced monthly totals: Mar - 7, Apr - 4, May - 2, Jun - 1, max 4E on Mar 29. Breeding season records were Brooklands 4 prs, New Salts Farm 1 pr, Sandgate Park 1 pr, and Woods Mill 3 prs. Gatherings late year included 104 at Brooklands on Aug 31, and 84 there on Dec 20; at Widewater 30 on Sep 9 and on Adur Saltings 39 on Nov 26.

0189 **PINTAIL** *Anas acuta*

Regular winter visitor at coastal and inland sites

Seawatching records from Worthing - 14E on Feb 18, 6E on Mar 29, 1E on Apr 30 and 1E on Oct 7; at Marina 25E on Mar 29 and 1E on Apr 30. Inland were 100 on Adur Levels on Jan 1 and max 65 on Henfield Levels on Mar 8.

0191 **GARGANEY** *Anas querquedula*

Scarce passage migrant

All the sightings were in spring as follows - 1E off Marina on Mar 28, 2E off Worthing same day, and 2E off Worthing on May 8.

0194 **SHOVELER** *Anas clypeata*

Regular winter visitor

Present early year Jan-Mar at Upper Adur Levels, with max 6 on Jan 1. A pair were seen at New Salts Farm on Mar 29. Seawatching totals at the Marina were Feb - 2, Mar - 55, Apr - 22, May - 2, Nov -1, with peak counts 13E/1W on Mar 29, 12E on Apr 2. At Worthing slightly lower numbers with peak 10E on Aug 31.

0198 **POCHARD** *Aythya ferina*

Regular winter visitor in small numbers

The peak counts at Brooklands and Widewater were as shown in the table. The only other records were 1W at Marina on Sep 18, and 41 on the Adur at Shoreham on Dec 12.

	Jan	Feb	Mar		Oct	Nov	Dec
Brooklands	-	21	3		12	38	61
Widewater	53	42	-		-	36	42

0203 **TUFTED DUCK** *Aythya fuligula*

Declining winter visitor

Monthly maxima at Brooklands were:

	Jan	Feb	Mar	Apr	May	Jun	Jul	Aug	Sep	Oct	Nov	Dec
Brooklands	1	-	1	-	9	2	-	2	12	17	14	20

Insignificant numbers were noted on seawatches. 2 prs bred at Wiston Pond, with two family parties seen in Aug.

0206 **EIDER** *Somateria mollissima*

Regular and passage migrant and winter visitor

Numbers on the sea were 6 off Southwick on Jan 2 and 4 drifting W off Portslade on Jan 17 and Worthing on 19th. The rather low numbers were reflected in the seawatching totals as follows:

	Jan	Feb	Mar	Apr	May	Jun		Aug	Sep	Oct	Nov	Dec
Brighton	2	3	25	58	14	-		-	-	8	9	14
Worthing	2	4	4	4	-	-		-	-	-	5	4

The peak counts at Marina were 26E on Apr 8 and 14E on May 9.

0213 **COMMON SCOTER** *Melanitta nigra*

Common passage migrant

The only records received were from the 2 main seawatching sites, the monthly totals as follows:

	Jan	Feb	Mar	Apr	May	Jun	Jul	Aug	Sep	Oct	Nov	Dec
Brighton	37	55	977	2468	599	83	153	49	24	41	155	67
Worthing	-	-	92	235	161	-	-	-	12	16	79	7

High counts from Marina were 580E (Mar 28), 293E (Apr 9), 262E/3W (Apr 20), and 268E (Apr 29). At Worthing the peak was 107E (May 8).

0215 **VELVET SCOTER** *Melanitta fusca*

Fairly regular passage migrant

An excellent number of records, the first being on Jan 1 off Marina. Seawatching records there produced monthly totals: Jan - 2, Feb - 1E, Apr - 41E, May 2W/1E, Nov - 4E, Dec - 3E. Peaks were 14 on Apr 25/26th. Totals at Worthing were Apr - 12, peak 7E on Apr 22, and 3E on Dec 6. A male lingered off Southwick for the latter part of December.

0218 **GOLDENEYE** *Bucephala clangula*

Regular winter visitor in small numbers

A rather poor year with 1M off Shoreham on Jan 11, 1F at Widewater on Mar 23 and 2W there the same date, and 1W at Worthing on Oct 3.

0221 **RED-BREASTED MERGANSER** *Mergus serrator*

Common winter visitor

Numerous on the sea during Jan with peak counts 100 off Ferring, 53 off Southwick, 41 off Worthing, and 20 off Hove. There were 2 on Lower Adur on Jan 1, and 10 on Widewater on 14th. Present on the Canal in varying numbers, peaks were 37 in Jan, 24 in Feb, and 15 in Mar. Seawatching counts were:

	Jan	Feb	Mar	Apr	May	Sep	Oct	Nov	Dec
Brighton	15	26	77	195	10	-	7	5	33
Worthing	166	111	409	29	12	-	2	100	136

The highest late year concentration was off Goring with 173 on Dec 1, and 149 still there on the 4th. Smaller numbers were off Southwick and Worthing also in December.

0231 **HONEY BUZZARD** *Pernis apivorus*

Scarce migrant

A probable sighting was at Upper Beeding on Sep 2 but remains unconfirmed. Closer views were obtained at Sheepcote Valley of 1 on Sep 12 (SOS), and another flew S at Brighton on the late date of Oct 3 (PJW). The latter 2 records submitted to SOS.

0238 **BLACK KITE** *Milvus migrans*

Rare vagrant

One at Worthing on May 22 (BFF) has been submitted to SOS.

0239 **RED KITE** *Milvus milvus*

Rare vagrant

One flying north over Brighton on Aug 9 (IJW, PJW) has been accepted by SOS.

0260 **MARSH HARRIER** *Circus aeruginosus*

Scarce passage migrant

Seawatchers at both Worthing and Marina saw a male fly east along the coast on May 16. In the Summer an imm female was at Harrow Hill on Jul 28, and probably the same bird on Aug 18. Another was at Sheepcote Valley on Aug 6.

0261 **HEN HARRIER** *Circus cyaneus*

Passage and occasional winter visitor

Totally absent from the area during the first winter period, but about 5 birds noted from Oct 14 to Nov 29. These were ringtail/f from Chantry Hill, Cissbury and Steep Down; and ringtail/m from New Erringham and Steyning Roundhill.

0269 **SPARROWHAWK** *Accipiter nisus*

Fairly common resident

Reported extensively over the area with breeding counts as follows: Benfield Valley 1 pr, Cissbury 1 pr, Findon Valley 3 prs, Goring Gap 1 pr, Lancing Clump 2 prs, Patching 1 pr, Wildpark 1 pr. Elsewhere reported over a dozen sites in Jan/Feb, and through the year at urban Brighton & Hove, Clapham Woods, Sanctuary and Southwick. At the Marina 1 flew in off sea on Apr 20.

0287 **BUZZARD** *Buteo buteo*

Scarce but increasing resident and passage migrant

Over 40 records received from this steadily expanding raptor, in all months of the year. Most of the records concentrated on the Michelgrove/Patching/Chantry Hill area to the western limit of the SDOS area. 1-2 prs probably bred, with displaying birds in Apr and up to 4 regular through the Summer. It is becoming increasingly difficult to ascertain which are resident birds or migrants, the remainder of the records were: Benfield Valley and West Worthing in Mar; High Salvington in Apr/May; Chanctonbury and Clapham Woods in Jun; King's Barn Levels, Newtimber Hill, Old Erringham Farm, Sompting and Wildpark in Aug; Findon and Truleigh Hill in Sep; Cissbury and Hollingdean in Oct; No Man's Land in Nov; and Woodvale Cemetery in Dec.

0301 **OSPREY** *Pandion haliaetus*

Rare passage migrant

One flew east over Hollingdean on May 28 (ADW), one circled over West Pier on Sep 11 (SOS) and one was seen fishing in river Adur on Sep 28 (SOS).

0304 **KESTREL** *Falco tinnunculus*

Fairly common resident

With over 20 prs reported this species does well in the area. 2 prs were noted at Castle Goring, Ditchling Beacon, Findon Valley, and 4 prs at Wildpark. Juvs were ringed at Cissbury and Sompting Abbots. There was 1 in off the sea at Marina on May 20.

0307 **RED-FOOTED FALCON** *Falco vespertinus*

Rare vagrant

An adult male was reported flying over Patcham on Aug 4, but the observer may not have submitted the record to SOS.

0309 **MERLIN** *Falco columbarius*

Scarce but regular in autumn/winter

Over a dozen records with 4 in Jan from Kithurst Hill, Lancing Beach, Shoreham and Widewater; 2 in Apr from Airfield and Ferring Rife; 2 in Sep at Harbour and Lancing; 1 in Oct at Marina; 3 in Nov at Beeding Hill, Harbour and Steep Down; lastly 1 at Worthing in Dec.

0310 **HOBBY** *Falco subbuteo*

Regular passage migrant, has bred

The monthly totals shown in the table were from 18 sites scattered across all habitats including both downland and some urban areas. The first was at Wildpark on Apr 27 and the last at Cissbury on Oct 10.

Apr	May	Jun	Jul	Aug	Sep	Oct
2	5	6	7	15	9	1

0320 **PEREGRINE** *Falco peregrinus*

Scarce but increasing breeding resident

A pair regularly seen during Jan/Feb at Southwick Power station chimney, and seen copulating there. Further sightings in the summer, but the chimney has now been demolished. A pair nested in a nest box erected under guidance by SOS, with



permission from RSPB/English Nature, on Sussex Heights, Brighton. In spite of some disturbance at times, 2 young females fledged. Eggs were laid at another site in SDOS area, but had no success this year. There were many individual sightings received from around the area, mainly from coastal and downland sites.

0358 RED-LEGGED PARTRIDGE *Alectoris rufa*

Common introduced resident

There was no confirmed breeding, but small parties were noted from Beeding Brooks (covey 12 in Nov), Canada Bottom, Cissbury, Harrow Hill, Hollingdean allotments, Sompting Abbots, Steyning and Worthing GC. The highest count, mainly of released birds, was 150 at Lower Standean on Dec 5.

0367 GREY PARTRIDGE *Perdix perdix*

Fairly common resident

An encouraging number of coveys noted in Jan with 4 at Chantry Hill, 5 at Ferring Rife, 8 at Goring, 18 at Kingston Gorse, 9 at Steep Down, and prs at Clapham Woods, Coombes, Hollingdean, Old Salts Farm and Sullington Hill. Confirmed breeding was from Goring Gap 13 prs, Highdown Hill 2 prs, Mill Hill 1 pr. Noted additionally in a Steyning garden in October, 6 at Beeding Hill in November, and in December, 26 at Lower Standean and 8 at Lancing Clump.

0370 QUAIL *Coturnix coturnix*

Rare but regular summer visitor

First heard in Benfield Valley on May 16. Recorded from 4 sites in Jun with 1 at Mossy Bottom, Mill Hill on 6th, 1 at Steep Down on 21st, 1 at Chantry Hill on 24th, and 2 at Harrow Hill on 25th. At Steep Down there was a gap, then 1-2 birds were present during Aug. Birds at Harrow Hill continued to be reported through July and 1 was flushed and seen well on Aug 16 - the observer's first sighting in 26 years of hearing them!

0394 PHEASANT *Phasianus colchicus*

Common introduced resident

A species taken for granted and under-recorded. Noted at Goring Gap beach on Mar 29, and the only breeding count was 2 prs at Wildpark.

0407 WATER RAIL *Rallus aquaticus*

Regular winter visitor, may breed

The only early year record was 1 at Woods Mill on Jan 1, and probably resident there all year. Late year records were 2 at Sanctuary on Nov 21, and singles noted there to Dec 6; 1-2 at Ferring Rife throughout Dec; and 2 at Cuckoo Corner on Dec 4.

0424 MOORHEN *Gallinula chloropus*

Common resident and winter visitor

Early year residents reported at only 3 sites, maxima were 12 at Brooklands in Jan, 3 at Adur Estuary and 25 King's Barn Levels in Feb. At Brooklands 1-2 prs bred,

with 4 young seen in Aug. Breeding was also at Rock Common 1 pr and Woods Mill 3 prs. May have bred at Sanctuary, with 15 there on Aug 18. Late year maxima were 17 at Brooklands and 5 at Henfield Levels.

0429 **COOT** *Fulica atra*

Common resident and winter visitor

The monthly maxima at Brooklands were as follows:

	Jan	Feb	Mar	Apr	May	Jun	Jul	Aug	Sep	Oct	Nov	Dec
Brooklands	53	50	22	33	n/c	n/c	n/c	182	164	180	156	132

A single bird was inside the Marina on Jan 15. One noted at Woods Mill on Apr 25, staying into May, and is the first record there since 1984. Five prs bred at Brooklands (23 young counted on Jun 17) and 1 pr nested at Rock Common (4 young).

0450 **OYSTERCATCHER** *Haematopus ostralegus*

Common winter visitor and passage migrant, occasional breeder

Early year beach counts at Goring Gap were Jan - 19, Feb - 35 and Mar - 27. Also 10 at Southwick Beach on Jan 16. The monthly seawatching totals were:

	Jan	Feb	Mar	Apr	May	Jun	Jul	Aug	Sep	Oct	Nov	Dec
Brighton	84	8	233	165	143	2	16	14	5	-	-	12
Worthing	31	11	36	33	53	-	-	5	-	6	-	5

Peak counts were 55E at Marina on Apr 4, 38E there on Mar 29 and 31W on Jan 31 at Worthing. Displaying prs were noted in Lower Adur, but breeding not proven. In Aug there were 29 at Kingston Gorse and maxima at Goring were Sep - 26, Oct - 24, Nov - 38 and Dec - 40. Smaller counts in this period were from Brooklands, Marina, Shoreham and Southwick.

0456 **AVOCET** *Recurvirostra avocetta*

Uncommon, but regular passage migrant

All records were in spring as follows: Marina 2W on Feb 2, 1W/4E on Mar 20, 1E on Mar 23, 1E on Apr 1, and 2E on Apr 29. Elsewhere a single was reported on Lower Adur on Apr 19.

0469 **LITTLE RINGED PLOVER** *Charadrius dubius*

Rare passage migrant. Has bred.

Quite a rarity on seawatching, so 1E at Marina on Apr 21, and 2E at Worthing on May 15 were good records. Two pairs were present in May at separate inland sites with attempted breeding at one. The only autumn record was 1 at Widewater on Aug 16.

0470 **RINGED PLOVER** *Charadrius hiaticula*

Common winter visitor and passage migrant; attempts to breed

The highest monthly roost counts from the main sites were: (see table overleaf)

	Jan	Feb	Mar		Aug	Sept	Oct	Nov	Dec
Adur	80	49	7		285	170	174	150	84
Goring	5	-	-			73	-	-	33
Kingston Gorse	-	-	-		88	104	-	-	-
Marina	48	34	-		41	-	53	-	-
Worthing	110	-	-		102	80	70	-	-

Monthly totals of passage birds at Worthing were Mar - 11W, May - 53E, Aug - 22E, Oct - 36W/20E, Nov - 24W. Bred at the Marina (1 pr deserted), at Shoreham (2 prs, 2 chicks survived) and Widewater 4 prs.

0482 DOTTEREL *Eudromias morinellus*

Rare passage migrant

Four adults were at Steyning Roundhill on Sep 5-6 (SOS).

0485 GOLDEN PLOVER *Pluvialis apricaria*

Fairly common winter visitor

Winter birds were: 6 at Beeding Brooks on Jan 10; 10 at Tollbridge on Jan 17 increasing to 18 on Feb 4; and 19 on Beeding Hill on Jan 24. Seawatching at Worthing produced 5E on Apr 25 and 7W on Oct 11. Recorded on the downs late year with max 18 at Steyning Roundhill on Nov 29 (smaller numbers Aug-Sep), and max 46 at Beeding Hill on Dec 6 (smaller numbers from Nov 29).

0486 GREY PLOVER *Pluvialis squatarola*

Common winter visitor and passage migrant

Only early year counts were max 99 at Goring Gap and 17 at Tollbridge in Jan. Monthly seawatching totals were as follows:

	Jan	Feb	Mar	Apr	May	Jun	Jul	Aug	Sept	Oct	Nov	Dec
Brighton	-	4	42	35	239	-	1	4	-	9	-	-
Worthing	-	-	8	2	216	-	-	-	2	10	18	-

Peak counts were 85E at Worthing and 152E at Marina on May 10. Autumn beach counts at Goring commenced with 17 on Sep 14, increasing to max 130 in Nov and 138 in Dec. At Kingston Gorse max 100 on Nov 27, and lastly 24 at Cuckoo Corner on Dec 30.

0493 LAPWING *Vanellus vanellus*

Common winter visitor but declining breeder

Gatherings during Jan were 200 at Henfield Levels on 1st, 300 on Adur Saltings on 11th, 200 at Ferring Rife on 23rd and 4,000 on Airfield on 31st. Numbers continued through Feb with peaks on 15th, with 1,550 on Adur Saltings, 900 at New Salts Farm and 250 at Kingston Gorse. During this period 55 flew S at Marina. Probable breeding occurred at Cissbury 3 prs and Findon 1 pr. Flocks started building up with 260 at New Salts farm on Aug 26, increasing to 800 in Sep and still 400 in Dec. Peaks elsewhere were 152 at Kingston Gorse in Nov, 1,150 at Adur Tollbridge and 400 at Ferring Rife in December.

0496 **KNOT** *Calidris canutus*

Regular passage migrant

There was 1 reported at Shoreham Fort on Jan 18. Seawatching in May at Marina produced 107E on 8th and monthly total 206. In the autumn present at Widewater with 6 on Sep 9, 3 on 10th, and 4 on 11th; and on Adur Saltings 1 on Sep 5, 4 on 13th, and 1 on Oct 4. Lastly there were 2W past the Marina during Nov.

0497 **SANDERLING** *Calidris alba*

Common winter visitor and passage migrant

In Jan there was a flock of up to 60 reported from Shoreham and Brooklands Beach, then 10 at Goring Gap in Feb. Seawatching totals were as follows:

	Jan	Feb	Mar	Apr	May	Jun	Jul	Aug	Sep	Oct	Nov	Dec
Brighton	-	-	23	52	93	-	-	-	-	-	-	-
Worthing	-	-	299	82	636	-	-	7	4	-	5	4

The Worthing total includes birds on beach, such as 252 on Mar 28 and a very high 389E on May 8. The peak at Marina was much lower with 31E on Apr 30. Varying numbers were present from Aug, with peaks 11 at Kingston Gorse on Sep 25, 50 at Goring Beach on Oct 29, and 45 at Widewater on Dec 31.

0501 **LITTLE STINT** *Calidris minuta*

Scarce passage migrant

A cluster of autumn records with a single feeding with Ringed Plovers on Worthing Beach on Aug 26; then 1-2 at Widewater from Sep 9 to Oct 4; 2 at Goring Beach on Sep 14; 1 at Sheepcote on Sep 17 (first site record) and 4 at Adur Tollbridge on Sep 29.

0509 **CURLEW SANDPIPER** *Calidris ferruginea*

Scarce passage migrant

First noted with 1W at Marina on Jul 14, then a gap until Sep with birds at Widewater from 7-11th, max 8 on last day; and on the Adur saltings with 3-4 on 11-12th and singles on 27th and Oct 4.

0510 **PURPLE SANDPIPER** *Calidris maritima*

Scarce winter visitor

The max counts at the two main wintering sites were:

	Jan	Feb	Mar	Apr	May	Jun	Jul	Aug	Sep	Oct	Nov	Dec
Brighton	2	7	7	4	-	-	1	1	-	2	8	4
Shoreham	9	3	5	6	-	-	-	-	-	-	1	1

The last winter birds were 4 at Marina on Apr 29, and the first returning bird was at Marina on Jul 10. Apart from the above sites, the only other record was 2 at Southwick Beach on Dec 19.

0512 **DUNLIN** *Calidris alpina*

Common winter visitor and passage migrant

Early year there was one inland at Bramber on Jan 1, and 60 roosting on Worthing Beach. The monthly roost peaks, including passage birds at Widewater were:

	Jan	Feb	Mar	Apr	May	Jun	Jul	Aug	Sept	Oct	Nov	Dec
Adur	800	750	4	-	-	-	-	-	74	32	350	821
Goring	134	n/c	49	-	-	-	-	-	6	n/c	120	229
Widewater	-	-	-	-	-	-	-	63	55	-	-	6

Seawatching high counts were 172E on May 8 and 175W on Nov 2 at Worthing. Monthly totals were:

	Jan	Feb	Mar	Apr	May	Jun	Jul	Aug	Sep	Oct	Nov	Dec
Brighton	-	-	44	34	53	-	1	4	-	9	-	-
Worthing	95	27	148	35	320	-	-	17	14	12	251	-

0517 **RUFF** *Philomachus pugnax*

Scarce winter visitor and passage migrant

Two birds remained in the area for a short period - first seen on Adur Saltings on Feb 15, and subsequently at New Salts Farm (Feb 16-18).

0518 **JACK SNIPE** *Limnospiza minima*

Winter visitor in small numbers

Singles were present at both ends of the year at Ferring Rife from Jan 25 to Feb 2, and from Nov 25 into Dec.

0519 **SNIPE** *Gallinago gallinago*

Common winter visitor

Early year there were 5 at Woods Mill on Jan 22 and max 4 at Ferring Rife on 25th. High counts were then at King's Barn Levels with max 27 on Mar 8 and also 19 on Feb 8. There was 1W at Steyning Roundhill on Sep 20. Late year birds from Beeding Brooks were 2 on Nov 16, increasing to 8 on 22nd, and 5 on Dec 13.

0529 **WOODCOCK** *Scolopax rusticola*

Winter visitor and passage migrant

There were singles at Woods Mill on Jan 22, Stanmer Woods on Feb 8, Worthing Beach on Mar 21, and at Whitehawk on Mar 27. Late year records were all in Nov, again all singles, at Sheepcote on 19th, dead at Marina undercliff on 20th (possibly a Peregrine kill) and lastly at Steep Down on 29th.

0532 **BLACK-TAILED GODWIT** *Limosa limosa*

Uncommon passage migrant and winter visitor

Seawatching from Marina produced 4E on Apr 30, and 16E on May 24. A flock of 13 flew south at Adur Tollbridge on 16 August.

0534 **BAR-TAILED GODWIT** *Limosa lapponica*

Common passage migrant and regular winter visitor

There was 1 on Goring Beach on Jan 3 and another by Tollbridge on Jan 12. Seawatching monthly totals were:

	Jan	Feb	Mar	Apr	May	Jun	Jul	Aug	Sep	Oct	Nov	Dec
Brighton	-	-	-	929	171	-	-	-	-		1	-
Worthing	-	-	2	107	193	-	-	-	-	2	-	-

More than half the Apr total at Marina, 542E were on 29th. Late year records, maybe involving the same bird, were singles at Widewater on Sep 9, Adur Saltings on Sep 27 and at Goring Beach from Oct 3 to Nov 17.

0538 **WHIMBREL** *Numenius phaeopus*

Common passage migrant

Monthly seawatching totals were as follows:

	Jan	Feb	Mar	Apr	May	Jun	Jul	Aug
Marina	-	-	2	563	341	11	23	4
Worthing	-	-	-	114	66	-	-	1

The first at Marina was on Mar 18. Peak counts there were 6W/107E on Apr 21 and 68E on May 17. At Worthing the peak was 33W on Apr 25. The only other record was 1 heard at night passing Hollingdean on Jul 30.

0541 **CURLEW** *Numenius arquata*

Common passage migrant

The monthly seawatching totals were:

	Jan	Feb	Mar	Apr	May	Jun	Jul	Sep	Oct	Nov
Marina	-	3	30	25	2	6	10	2	-	8
Worthing	-		3	-	14	3	-	-	-	7

The peak count was 17E at Marina on Apr 22. Away from the coast surprisingly the only records were 1 over Hollingdean on Feb 26, and singles at Cissbury on Aug 31 and Sep 19. There was 1E off Goring on Nov 11.

0546 **REDSHANK** *Tringa totanus*

Common winter visitor

Early year reported at Adur Saltings, Brooklands, Harbour, Marina, and Steyning Levels in small numbers, with max 22 at Cuckoo Corner on Mar 12. Seawatching at Marina produced monthly totals: Jan - 1, Mar - 2, Apr - 5, May - 2, Jun - 2, Jul - 7, Aug - 1. Larger numbers were present in autumn with max 105 on Adur Saltings on Oct 4, and also resident through Nov/Dec at King's Barn Levels, with max 6 on Nov 3.

0548 **GREENSHANK** *Tringa nebularia*

Regular passage migrant

Spring seawatching counts were from Marina with 1E on Apr 30 and 5E in May; then 2E in May at Worthing. The first of the autumn was 1N at Sheepcote on Aug 3, followed by 1-2 at Adur and Widewater to mid-Sep, and one at King's Barn Levels from Sep 9 and 17. Also singles flew west at both Marina and Worthing during this period.

0553 **GREEN SANDPIPER** *Tringa ochropus*

Regular winter visitor

Noted early year with 1 at Ferring Rife, max 6 on King's Barn Levels and max 3 at Henfield Levels. In the autumn 1 at Cuckoo Corner in Sep, then present at usual wintering areas from mid-Nov with max 8 at Wyckham Levels, and 2 at Henfield and King's Barn Levels.

0556 **COMMON SANDPIPER** *Actitis hypoleucos*

Common passage migrant, occasionally winters

Spring passage commenced with 1 at Brooklands on Apr 10, then 2 on Adur on 17th increasing to 4 on May 3, and 16 on May 15. The monthly totals from Marina were Apr - 12, May - 52, Jun - 1, Jul - 11, Aug - 4, Sep - 1, Oct - 1, peak counts 8E on May 8, 15 on May 16, and 8E on Jul 8. Autumn birds were in small numbers from Ferring Rife, Widewater and Worthing Beach, but the largest numbers concentrated on the Adur with max 16 on Jul 31, and 8 on Aug 25. Inland were 1 at King's Barn Levels on Jul 22 and 2 there on Aug 31. One was heard calling at night at Hollingdean on Jul 26.

0561 **TURNSTONE** *Arenaria interpres*

Common passage migrant and winter visitor

Early year flocks in Jan were 28 at Southwick Beach and max 30 at Shoreham. Seawatching totals were as follows:

	Apr	May	Jun	Jul	Aug	Sep	Oct	Nov
Brighton	17	66	-	-	-	2	-	-
Worthing	38	30	-	-	6	7	-	2

Peak counts were 38E at Worthing on Apr 26, and 17E on May 17 at Marina. In the autumn groups were present at Kingston Gorse (max 39 on Sep 25), Adur Saltings (max 23 on Oct 4), and Shoreham Beach (max 35 on Oct 25).

0565 **GREY PHALAROPE** *Phalaropus fulicarius*

Rare vagrant

An adult was seen off Brighton Palace Pier on Jan 5 (IJW). Probably the same bird was at Airfield on 7th (DS) and off both Shoreham and Worthing on 10th (JAN, SOS). All records accepted by SOS.

0566 POMARINE SKUA *Stercorarius pomarinus*

Regular spring passage migrant

Totals from Marina were Apr - 5, with 3E on 23rd; May - 113, peaks being 15 on 4th, 16 on 10th, and 17 on 11th. Other records were 3E off Shoreham on May 8; and at Worthing 1E on May 8, 6E on May 9, and 3E on May 11. Late year records were 1 off Marina on Aug 3 (IJW) and 1 with gulls off Goring on Nov 30 (DS), the latter two unseasonal records accepted by SOS.

0567 ARCTIC SKUA *Stercorarius parasiticus*

Regular spring and autumn passage migrant

A good seawatching season shows in the monthly totals:

	Jan	Feb	Mar	Apr	May	Jun	Jul	Aug	Sep	Oct	Nov
Marina	1	-	1	144	102	14	3	26	9	1	2
Worthing	-	-	-	16	22	-	-	2	2	-	-

An isolated record of 1 at Marina on Mar 1, then peaks at Marina were 56E on Apr 23, with other high counts 22E on Apr 22, 15E on May 8 and May 9, and 10W on Aug 6. The peak at Worthing was 10E on May 8. Late year birds were an imm off Widewater on Nov 4 and 1W at Worthing on Nov 7.

0569 GREAT SKUA *Stercorarius skua*

Regular passage migrant in small numbers

In Jan there was 1 off Marina on 1st, and 1 seen eating a Kittiwake there on 4th. The seawatching monthly totals were:

	Jan	Feb	Mar	Apr	May	Jun	Jul	Aug	Sep	Oct	Nov
Marina	4	-	-	10	8	4	4	4	-	1	-
Worthing	-	-	-	4	1	-	1	-	-	-	-

The highest day count was 4E on Apr 24 at Marina. There were also 1W at Shoreham on Apr 22 and 1 offshore there on May 7.

0575 MEDITERRANEAN GULL *Larus melanocephalus*

Regular passage migrant and increasing winter visitor

Well reported with over 100 records, although many sightings not specific enough to show table as last year. Most of the records were from seawatching sites, the monthly totals being:

	Jan	Feb	Mar	Apr	May	Jun	Jul	Aug	Sep	Oct	Nov	Dec
Brighton	2	3	12	28	21	1	2	-	-	-	1	8
Worthing	-		2	7	5	-	-	1	1	-	1	1

The ringed (24H) individual remained in Harbour in Jan, but was joined by an unringed ad and another with white rings on each leg in Feb. Upwards of 6 birds were around the area Jan/Feb. Other records were 1 ad hawking ants at Holmbush supermarket on Aug 8, and 1 ad at Cuckoo Corner on Aug 20. Probably as many as 5 different birds frequented the Marina in December.

0578 **LITTLE GULL** *Larus minutus*

Regular on spring/autumn passage, occasional winter visitor

Rough weather birds noted in Jan along Canal, at Marina and Shoreham Fort probably involving 3 - 4 birds. The monthly seawatching totals were:

	Jan	Feb	Mar	Apr	May	Jun	Jul	Aug	Sep	Oct	Nov	Dec
Brighton	3	1	1	40	44	-	1	1	3	72	1	4
Worthing	-	-	1	8	11	-	-	-	-	1	7	-

The highest spring count was 28E at Marina on Apr 22. Singles noted from late Sep at Marina, Shoreham Fort and Widewater. Storms produced 50W at Marina on Oct 13 and 22W there on 31st.

0579 **SABINE'S GULL** *Larus sabini*

Rare passage migrant

A juv W at Marina on Oct 27 (IJW), was accepted by SOS.

0582 **BLACK-HEADED GULL** *Larus ridibundus*

Common winter visitor and passage migrant

Early year counts were 500 at Goring Gap on Jan 8, and a massive 8,000 roost count at Southwick on Mar 22 was probably a record for our area. Monthly seawatch totals were:

	Jan	Feb	Mar	Apr	May	Jun	Jul	Aug	Sep
Brighton	-	141	4430	1471	992	-	-	-	-
Worthing	-	-	461	132	439	-	20	-	111

Peak counts were 834 at Marina on Mar 23 and 7W/574E on Mar 30. There were no late year roost counts received.

0589 **RING-BILLED GULL** *Larus delawarensis*

Very rare vagrant

There was a report of an adult on River Adur on Mar 28. No details have been submitted and as yet is still under consideration by SOS.

0590 **COMMON GULL** *Larus canus*

Common winter visitor

Early year flock counts included 1300 on Lower Adur on Jan 31, 400 near Findon on Feb 14, 600 at Tollbridge on Feb 18, 333 Worthing Beach on Mar 28, but these were all surpassed by a record count of 12,000 at Southwick on Feb 25. Worthing Beach seawatching totals were Mar - 353, Apr - 20, May - 10. The highest late year counts were 325 by Tollbridge on Nov 18 and 720 at Cissbury on Dec 24.

0591 **LESSER BLACK-BACKED GULL** *Larus fuscus*

Common in winter, now breeding in small numbers

Small numbers reported at Widewater in Feb, and nearby on Adur a count on 15th revealed 3 *graellsii* and 4 *intermedius* types. Some passage noted at Worthing

with 15 in May, max 13E on 8th. Breeding counts were central Brighton 3 prs, Palmeira Square Hove 2 prs, West Pier 1 pr (where fledgling seen being taken by Peregrine), and Worthing around 7 prs. May have also bred at Maybridge Estate, Durrington. The only late year count was 8 on Adur on Oct 11.

0592 HERRING GULL *Larus argentatus*

Common, expanding breeding population

An exceptional count of 1,000 at Southwick Beach on Jan 7 was the only early year record. Breeding surveys revealed central Brighton 60+ prs, Broadwater 1 pr, Hove 12 prs, Hollingdean 11 prs and Worthing 110 prs. The only other record was 250 loafing offshore at Worthing on Jun 12.

YELLOW-LEGGED GULL *Larus argentatus michahellis*

Regular autumn flock

Reported in Jan with 1 ad at Cuckoo Corner on 1st, and up to 3 birds in the Southwick/Shoreham area involving 1stW and 3rdW birds from 8-27th. A 1stW was at Southwick Beach on Aug 15, then various observers reporting the regular autumn flock on the Adur from 5-19 until Oct 11.

0598 ICELAND GULL *Larus glaucooides*

Rare winter visitor

A 1st winter bird was found at Shoreham Harbour on Jan 7 (SRA, RAI, BFF, DS). Further records accepted by SOS presumably of the same individual were at Southwick on Jan 14 (IJW), Marina from Jan 18-20 (SOS), Marina again on Feb 21 (KBG) and back at Shoreham from Mar 18-26 (SRA, SOS et al).

0600 GREAT BLACK-BACKED GULL *Larus marinus*

Fairly common winter visitor

In Jan some large gatherings on Airfield with 350 on 17th and 140 on 31st. Late year produced peak 199 by Adur houseboats on Dec 10, and 3 other counts of 80+ around the vicinity in autumn. Birds with colour rings from Jersey were found roosting at Marina, the first with 'orange B' ring stayed from Jul 10-22. The second with 'orange C' ring returned from 1997 and stayed until Sep 7. One of the two birds was seen again at Marina on Nov 1 by a casual observer.

0602 KITTIWAKE *Rissa tridactyla*

Fairly common passage migrant and winter visitor

Rough weather in Jan pushed birds inland with singles at Devil's Dyke, Dorothy Stringer grounds, Brighton and Henfield Levels. The same weather produced 150E at Marina on Jan 1, and lingering birds around Harbour with peak 20 on 8th. Monthly totals at the main seawatching sites were:

	Jan	Feb	Mar	Apr	May	Jun	Jul	Aug	Sep	Oct	Nov	Dec
Brighton	335	178	287	552	1284	128	77	449	123	24	55	388
Worthing	5	2	6	22	42	4	-	3	2	5	40	29

High counts at Marina included 108E on May 4, 109E on May 12, 4W/113E on May 17, and a huge 336E on Dec 31 which is a record high for winter for the SDOS area. Max count at Worthing was 21W on Nov 21. The Marina roost peak was 119 on Sep 5.

0611 SANDWICH TERN *Sterna sandvicensis*

Common passage migrant

A winter record of 1 at Marina on Jan 6-7 has been accepted by SOS (IJW). Monthly seawatching totals were as follows:

	Jan	Feb	Mar	Apr	May	Jun	Jul	Aug	Sep	Oct
Brighton	2	-	118	1992	970	158	265	87	102	8
Worthing	-	-	19	353	527	52	13	73	81	4

The first spring arrival was at Marina on Mar 17, followed by high counts of 3W/154E on Apr 2, 228E on Apr 21 and 184E the next day. The peak at Worthing was 162E on May 5. Late birds were 4 off Worthing on Oct 1, 2 off Goring the next day and finally 2W at Marina on Oct 8.

0614 ROSEATE TERN *Sterna dougallii*

Rare passage migrant

1E at Marina on May 13 (IJW) at 6.06 hrs accompanied by 5 'commic' terns, passing Seaford 30 mins later. Accepted by SOS.

0615 COMMON TERN *Sterna hirundo*

Common passage migrant

The first wintering bird for Sussex was found in Shoreham Harbour on Jan 8. It stayed over a week subsequently along the Canal. Descriptions accepted by SOS for Jan 8-9, 17-19 (IJW et al). Most of the reports of seawatching sites referred to Common/Arctic (commic) the monthly totals being:

	Apr	May	Jun	Jul	Aug	Sep	Oct
Brighton	1709	5760	12	13	27	250	
Worthing	337	1798	4	5	98	307	3

The first was 1E at Marina on Mar 28. Peak counts at Worthing were 697E on May 8 and 482E the next day. At the Marina 505E on Apr 22, 1379E on May 9, 805E on May 10 and 531E on May 11. Additionally there were 30 at Shoreham harbour on Aug 26. The last for the autumn was at Worthing on Oct 28.

0616 ARCTIC TERN *Sterna paradisaea*

Noted on passage but rarely split from Common Tern

Birds specifically identified at Marina totalled Apr - 50, May - 147, Aug - 3, Sep - 27, Oct - 12, with peaks of 43 on May 27, 22E on May 25, 10E on Sep 9 and the last on Oct 6. Singles were seen at Southwick on Sep 6, Hove on Sep 13 and a late bird in the Harbour on Oct 11.

0624 **LITTLE TERN** *Sterna albifrons*

Fairly common passage migrant

The monthly seawatching totals were as shown in the table. The first was at Marina on Apr 19. The peak movements were on 2 days - May 8 with 26E at Marina and 30E at Worthing; and May 10 with 92E at Marina and 42E at Worthing. Also noted off Shoreham breakwater on Apr 30.

	Apr	May	Jun	Jul	Aug	Sep
Brighton	45	178	2	-	-	-
Worthing	79	108	-	-	-	-

0627 **BLACK TERN** *Chlidonias niger*

Regular passage migrant

First was 1E at Worthing on Apr 25. Medium passage followed with peak 35E on May 8. Monthly totals at Marina were Apr - 1, May - 41, Aug - 11, Sep - 3. Peaks counts here were 9E on May 11 and 9W on Aug 21.

0634 **GUILLEMOT** *Uria aalge*

Regular winter visitor

Small numbers noted on the sea in Jan from 4 sites, then 9 off Marina on Feb 20 and 3 oiled birds off Shoreham. Identified birds noted from seawatching sites mainly during the Winter period - see also under auk sp. Late year peak was 13 off Marina on Dec 1.

0636 **RAZORBILL** *Alca torda*

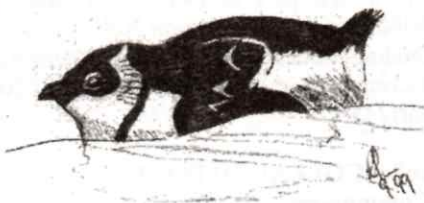
Scarce winter visitor and passage migrant

Early year identified birds noted in insignificant numbers from Goring, Widewater and Marina, where Feb total was 33. A few dead birds were found on beaches in Jan, and 1 sheltering inside Marina on Feb 21.

0647 **LITTLE AUK** *Alle alle*

Very rare autumn migrant

There were 3 confiding birds in 1998. The first was foraging close to Marina west arm on Nov 4 (ADW, IJW) but had gone next day. An obliging bird gave close views along Southwick Canal from Nov 9-18 (KBG et al) and lastly 1 by Marina east arm on Nov 19 (PJW et al), later moving inside the Marina, even trapping itself in the lock gates, before being picked up dead on Nov 28. All have been accepted by SOS.



0654 **PUFFIN** *Fratercula arctica*

Very rare spring migrant

1 flew E at Marina at 5.40am on May 28 (IJW). Accepted by SOS.

AUK Species

Monthly seawatching totals were as follows:

	Jan	Feb	Mar	Apr	May	Jun	Jul	Aug	Sep	Oct	Nov	Dec
Brighton	118	133	29	52	352	19	13	2	1	11	54	2469
Worthing	13	-	-	-	3	-	-	-	-	4	2	151

High counts at Marina included 62W/1E on Jan 25, 77E on Feb 26, 67W/75E on Dec 10, 192W/5E on Dec 16 and a record 115W/1,420E on Dec 31, the highest ever count for the area. At Worthing late year peaks were 56E/8W on Dec 19 and 33E on Dec 22.

0665 FERAL PIGEON *Columba livia*

Common resident

On Jan 26 there were 500 at Steep Down. Breeding count was 15prs around the Marina. There were no winter roost counts from the West Pier.

0668 STOCK DOVE *Columba oenas*

Common resident

Early year flocks were 30 at Harrow Hill in Jan, 28 at Lower Standean in Feb and 120 at New Salts Farm on Mar 1. Breeding records were Brighton Cemeteries 2 prs, Clapham Wood 1 pr, Wildpark 2 prs, Withdean Park area 4 prs and Woods Mill 1 pr. Also reported from 3 other sites during the breeding season. Late year counts were 30 at Beeding Brooks in Nov and a maximum of 500 at Lower Standean on Dec 5.

0670 WOODPIGEON *Columba palumbus*

Abundant resident

Winter counts at Wildpark peaked with 93 in Jan and 117 in Feb. Large flocks were 500 at Blackpatch Hill on Jan 25, 150 at New Salts Farm, and 200 at Cissbury on Apr 18. Breeding counts were Bevendean Down 18 prs, Brighton Cemeteries 44 prs, Whitehawk Hill 9 prs, Wildpark 57 prs and Withdean Park 14 prs. In the autumn some high flock movements recorded, the first of which was 115 at Wildpark on Oct 20, followed by 320W at Worthing on 26th, a massive 2080W in only 20mins on 30th, and 1260 S/SW on Nov 7 at Wildpark. Late year feeding flocks included 200 at Kingston Gorse on Nov 11, and 266 nearby at Goring Gap on 30th; then 2 flocks of 1000 from Lower Standean and Steyning in early Dec.

0684 COLLARED DOVE *Streptopelia decaocto*

Common resident

Early year counts from Wildpark were 54 in Jan and 50 in Feb. For the second year running 2 were noted coming in off the sea at Marina on May 18. Breeding records were Bevendean Down 9 prs, Brighton Cemeteries 14 prs, Whitehawk Hill 6 prs, Wildpark 32 prs, Withdean Park 11 prs. The only late year flock count was 50 at Waterhall on Oct 14.

0687 TURTLE DOVE *Streptopelia turtur*

Summer visitor, probably declining

The first were 2 at Coombes on Apr 26, then singles in May from Beeding CW, Golding Barn, Sanctuary, Stanmer Park and Wildpark. Further records in Jun were from Beeding CW and Wappingthorn, where they may have bred. Singles were then recorded from Jul 1 to Sep 13 from Beeding Hill, Chantry Hill, Harrow Hill, Sheepcote and Woods Mill. An excellent year.

0712 RING-NECKED PARAKEET *Psittacula krameri*

Scarce introduced resident

The small colony based in Hollingbury Woods has dwindled in recent years to just 3 birds. They do not now breed in the Woods but were reported flying over spasmodically during the year. They may have bred at the University of Sussex at Falmer. One was seen in a Hove garden on Jan 1 and unusually one flew in and perched on the Marina arm on Oct 29 staying for 15 minutes.

0724 CUCKOO *Cuculus canorus*

Summer visitor, possibly declining

First noted at Woods Mill on May 2. Heard or seen at only 5 sites in spring. Immatures were seen at Steep Down and King's Barn Levels in Aug.

0735 BARN OWL *Tyto alba*

Scarce winter visitor and possibly resident

Noted in Jan from Airfield, Sanctuary and Woods Mill. An unfortunate bird, with BTO ring, was hit by car near Waterhall on Feb 22 but died after being taken into care. One was at Lychpole Farm in Mar and another in Jun in the Storrington area.

757 LITTLE OWL *Athene noctua*

Fairly common resident

Confirmed breeding was from Beeding Hill, Nepcote Park and New Erringham Farm (2 juvs seen). Also resident in other areas and presumed breeding at Broadmere Common, Golding Barn and Lower Standean. Noted from 5 other sites including late year sightings at Goring Gap where reported as the first there.

0761 TAWNY OWL *Strix aluco*

Fairly common resident

There were 3 at Goring Hall in Jan and 1H at Easthill Park, Portslade in Feb, where they may have bred. Confirmed breeding was Cissbury 1 pr, Findon Valley 2 prs, Sanctuary 1 pr (2 young fledged) and Woods Mill 1 pr. Single birds were reported from scattered localities and may have bred at at least 3 other sites. 1 was found dead at Rock Common in Nov.

0767 LONG-EARED OWL *Asio otus*

Scarce winter visitor

The only records were 1 at a downland roost site on Jan 7, and 1 in off the sea at Marina on May 20, which landed on the west arm and was photographed.

0768 **SHORT-EARED OWL** *Asio flammeus*

Migrant and occasional winter visitor

The recent trend for fewer records continued with singles as follows: Henfield Levels on Jan 11, Sheepcote on Sep 13, Steep Down on Oct 14, Goring Gap on Oct 15 and Airfield on Nov 16.

0778 **NIGHTJAR** *Caprimulgus europaeus*

Rare summer migrant, formerly bred

Unusually one was seen from the Marina flying in off the sea on the morning of May 10 (IJW). One heard at Sullington Warren on Jun 20 was believed to have been present for 2 weeks, and possibly the same bird was recorded at Storrington on Aug 16 (SOS).

0795 **SWIFT** *Apus apus*

Common summer visitor and passage migrant

First of the year was 1E at Worthing Beach on Apr 22, followed by 4 at New Salts Farm on 25th and 2 at Airfield on 30th. As usual the main arrival was during the first week of May, although counts seemed low. Breeding records received were Durrington 3 prs, St Nicholas Church Shoreham 3 prs, Steyning 6 prs and Worthing 80prs. Mid-season movements included 685W at Marina after a thunderstorm on Jun 11, and 100 at Cissbury on Jun 20. Departure seemed quite early with 300 at Broadwater on Jul 19, and also 300 there on Aug 8. There were few large counts, but 108E at Goring Gap on Aug 26 and 70 at Benfield Valley on Sep 2. One's and two's were recorded in Sep at 6 sites, and the last were: 1 at Black Rock and 1E at Hove Lagoon on Oct 6.

0831 **KINGFISHER** *Alcedo atthis*

Scarce resident and winter visitor

Regularly reported from 5 sites during the year, but breeding not proven, and perhaps significantly fewer sightings during the summer. The main areas were Adur/New Salts Farm/Widewater, Ferring Rife, Henfield/Beeding Levels, King's Barn Levels and Woods Mill. Also noted at Marina in Aug and Sep. Most records were of singles but 2 birds twice and 3 birds once during winter period from Adur Saltings.

0846 **HOOPOE** *Upupa epops*

Rare passage migrant

An unconfirmed report of 1 in Queen's Park, Brighton on Oct 13.

0848 **WRYNECK** *Jynx torquilla*

Rare passage migrant

Sheepcote Valley hosted the only two birds seen within the area. The first stayed from Sep 12-19, and a second bird was found on the 15th also staying until 19th (ADW, IJW, TJW).

0856 GREEN WOODPECKER *Picus viridis*

Common resident

Breeding pairs were from Beeding CW, Durrington, Findon Valley, Sompting Abbots and 2 prs Wildpark. Numerous single sightings over the whole area indicated probable breeding at Brighton Cemeteries, Chanctonbury, Cissbury, Clapham Wood, Goring Gap, Michelgrove and Newtimber. In the autumn 3 birds were ringed at Cissbury, and a young male at the Sanctuary.

0876 GREAT SPOTTED WOODPECKER *Dendrocopus major*

Common resident

Breeding records were Cissbury 1 pr, Findon Valley 2 prs, Highdown Hill 1 pr, Steyning area 2 prs and Wildpark 2 prs. Probably bred at Goring Gap, Sompting Abbots and Warren Hill. Also noted late year from Ferring Rife and Upper Beeding.

0887 LESSER SPOTTED WOODPECKER *Dendrocopus minor*

Scarce, has bred

Recorded 3 times during the year from Woods Mill. Probably bred at Sandgate Park with drumming on Feb 26 and sightings to May, also 4 seen at nearby Warren Hill on Mar 22.

0974 WOODLARK *Lullula arborea*

Rare passage migrant

Just 2 records - 1 with skylarks at Goring Gap on Oct 6 (DIS) and 1 over Wildpark on Oct 9 (PJW).

0976 SKYLARK *Alauda arvensis*

Common resident

In Jan there were 30 at Steep Down on 26th, the only flock count for this period. Breeding records were Bevendean Down 12 prs, New Salts Farm 1 pr, Sullington Hill 1 pr, Wildpark 8 prs, and at Wolstonbury where 40 were counted on Apr 27 with numerous singing males. Late autumn passage included 104 over Wildpark on Nov 7, and 51W at Marina same day. Lastly, 123 were at Highdown Hill on Dec 5.

0981 SAND MARTIN *Riparia riparia*

Summer visitor and common passage migrant

First of the year were 10 at Marina on Mar 29. No others were reported until May from breeding sites - Sandgate Park 5 prs and Rock Common 15 prs. A pitiful autumn passage was recorded as 7W at Goring Gap on Aug 25 and singles at Highdown Hill in Sep and the last at Worthing Beach on Oct 4.

0992 SWALLOW *Hirundo rustica*

Common summer visitor

A winter seawatch at the Marina on Feb 20, produced the earliest arrival ever for Sussex (KBG, PJW). Next were singles at Worthing Beach and Cissbury at the

end of Mar. Small numbers were reported in Apr, the only high count being 109 at Worthing on May 10. Breeding records received were 1 pr at Mill Hill, breeding in a garage for their 20th year, and 1 pr at Benfield Valley. In Sep first movements were 100 at Sompting and 210 at Worthing on 9th, then 500 at Goring Gap on 10th and peak 500 at Wildpark on 18th. Passage continued through Oct with 300 at Long Furlong on 2nd and 400 at Worthing on 4th, to just a trickle at the month end from Highdown Hill, Southwick and Wildpark. The last was in the Harbour on Nov 9.

1001 HOUSE MARTIN *Delichon urbica*

Common summer visitor

First of the year were 4 at Upper Beeding on Apr 22, followed by 1 at Lancing Clump on 24th. The only breeding records were at Beeding CW 1 pr, Durrington 5 prs and Patcham 'small colony'. Autumn passage was recorded at Wildpark with a total of 1022 from Aug 28 to Oct 27. An exceptional 20,000 went W/NW at Sheepcote on Sep 13. Other counts were 700 in 20 mins at Mill Hill on Sep 20, 360E at Worthing on Oct 4, 200 at Goring Gap on Oct 5 and 250 at Sanctuary on Oct 10. the last were 2 at Woods Mill on Nov 2.

1009 TREE PIPIT *Anthus trivialis*

Fairly common passage migrant

There were no spring records. First for the autumn was at Lancing Clump on Aug 10. Totals at Goring Gap were 7 from Sep 10 to Oct 5; and at Wildpark 5 from Sep 2-11. Elsewhere small numbers only from Broadwater and Chantry Hill, and the last at Cissbury on Oct 10.

1011 MEADOW PIPIT *Anthus pratensis*

Locally common resident

Spring passage was poor with max 28 at Wildpark on Mar 18 and 16E at Worthing Beach on Mar 29. This species often under-recorded, but more breeding surveying revealed Bevendean Down 4 prs, Blackpatch Hill 2 prs, Harrow Hill 1 pr, Muntham Court 1 pr and Steep Down 2 prs. Autumn movement commenced with 100N at Goring Gap on Sep 9 and max counts included 113E at Worthing on Sep 25 (monthly totals - Sep 218, Oct 101); Wildpark 100 on Sep 25 (total 375 from Sep 11-Oct 4) and Goring 100 on Sep 14. Other counts in late Sep/early Oct were 50 at Adur Rec, 70 at Ferring Rife and 60 at Harrow Hill.

1014 ROCK PIPIT *Anthus petrosus*

Regular winter visitor, occasionally breeds

Present in small numbers on beaches at Goring, Shoreham and Widewater in Jan/Feb, also at Marina where possibly 2 prs bred but only 1 nest found, producing 3 young. Present at all the aforementioned sites on Nov/Dec. A Scandinavian Rock Pipit *A. p. littoralis* was at Marina on Mar 18 and has been accepted by SOS (ADW, IJW).

1017 YELLOW WAGTAIL *Motacilla flava*

Common passage migrant

Proving what a dismal spring it was for some incoming migrants, there was only 1 record, at Ferring Rife on May 3. Autumn passage was better, the first were 5 at King's Barn Levels on Aug 18, and max 9 there on Sep 4. The Wildpark total was only 11 from Aug 28 to Sep 26, but high counts were received elsewhere. Maxima were 30 at Cissbury on Aug 30, 12 at Waterhall on Sep 11, 17 at Sheepcote on Sep 13, 15 at Portslade on 22nd and a very high 70 on Adur Rec on 27th. The last was at Goring Gap on Oct 20.

1019 GREY WAGTAIL *Motacilla cinerea*

Noted on passage, may breed, regular in winter

A good number of records in 1998. Early year there were 1-2 present at Ferring Rife, 1 at Worthing and 2 at Steyning Sewage works. A migrant was noted at Wildpark on Mar 31. Bred at Woods Mill raising 2 young, and also at Steyning Mill Pond. Autumn passage commenced with 3NW at Sanctuary on Sep 5, and then one's and two's from urban Brighton, Beeding CW, Cissbury, Ferring Rife, Goring Gap, Marina, Shoreham and Wildpark to Mid Nov. Late year birds noted from Brighton and Steyning areas.

1020 PIED WAGTAIL *Motacilla alba*

Common resident

A count of 325 at Worthing Seeboard on Jan 20 was probably one of the highest roost counts for the area. In Feb there were 44 on Marina beach on 13th and 25 at Durrington on 20th. Breeding was confirmed with 1 pr Durrington and 3 prs Marina (raising 18 young in 6 broods). Some movements noted in autumn from Waterhall, Widewater, Wildpark and Worthing Beach. Counts of over 40 were noted at Goring Gap on 3 dates in Oct, with max 287 on 9th. Another large roost was found at Hollingbury ASDA with 200 on Nov 10 and 160 on Dec 18.

Records for White Wagtail, mostly singles in Mar, were 1 at Beeding Brooks on 7th, 1 at Marina on 8th and 20th, 1 at Goring Gap on 21st and 2 at Shoreham Fort on 29th. In the autumn 1 at West Durrington on Sep 26.

1066 WREN *Troglodytes troglodytes*

Very common resident

Breeding season counts were Bevendean Down 18 prs, Cissbury 3 prs, Wildpark 68 prs and Withdean Park 18 prs. A total of 38 were ringed at Cissbury from May 9 to Nov 7.

1084 DUNNOCK *Prunella modularis*

Very common resident

Breeding season counts were Bevendean Down 18 prs, Cissbury 7 prs, Wildpark a 3yr decline from 58 to 50 prs, and Withdean Park 8 prs. A total of 59 were ringed at Cissbury from Apr 18 to Nov 7. Of note was an albino at Sheepcote on Dec 24.

1099 **ROBIN** *Erithacus rubecula*

Very common resident

Breeding season counts were Bevendean Down 24 prs, Wildpark 121 prs and Withean Park 21 prs. A total of 89 were ringed at Cissbury between Apr 18 and Nov 7.

1104 **NIGHTINGALE** *Luscinia megarhynchos*

Passage migrant, occasionally breeds

A singing bird was noted at West Worthing on Apr 20, then 2 at Wiston on 22nd. Then followed good numbers in May from suitable breeding sites with singing males at Fulking, Sandgate Park and Wyckham Farm, and as many as 5 in the Oreham Common/Woods Mill area. Ringing at Cissbury included a bird with brood patch on Jul 4, and juvs ringed on Jul 11 and Aug 9 may indicate possible local breeding. The only migrants in autumn were 2 at Sheepcote Valley on Aug 1.

1121 **BLACK REDSTART** *Phoenicurus ochrurus*

Regular autumn/winter visitor, has bred

Wintering birds in Jan/Feb were noted at Lancing Beach, Marina, New Salts Farm, Shoreham Harbour, Southwick Beach and Widewater. At least 4 birds were involved. A pr were seen at Marina on Mar 19, and other single migrants at end Mar were from Cissbury, Findon Valley, Goring Beach and the Marina. In Apr 1 at Widewater on 1st and 1 in Wildpark on 20th. Autumn birds were noted from Oct 2 to Nov 26 at Airfield, Cissbury, Ferring Rife, Sheepcote, Southwick and Widewater.

1122 **REDSTART** *Phoenicurus phoenicurus*

Fairly common passage migrant, especially in autumn

First was on the early date of Mar 30 at Cissbury, then the only other spring records were at Worthing Beach on Apr 19 and May 5. A slightly better autumn, but only 7 total at Wildpark and only 2 ringed at Cissbury. Others noted from Aug 26 at Coombes, Goring Gap, Lancing Clump, New Salts Farm, Sheepcote and Steyning Roundhill. The last were singles at Cissbury and Marina on Oct 10.

1137 **WHINCHAT** *Saxicola rubetra*

Common passage migrant

There were no spring records. First of the autumn were 6 on Aug 25 at Sheepcote, where the peak was 11 on Sep 18 and the last birds for the area on Oct 14 and 18. Other notable counts were 10 at Steyning Roundhill on Aug 27, 10 at Adur Brooks on Sep 1 and 9 at Southwick Hill on Sep 5. Hollingbury Camp had its lowest total for many years with only 5.

1139 **STONECHAT** *Saxicola torquata*

Regular winter visitor, occasionally breeds

Breeding was noted at Cissbury (1 pr raising 3 young), Steep Down 2 prs and Truleigh Hill 1 pr. Single birds also noted in Mar at Beeding CW and King's Barn Levels. May have bred at Mill Hill. Quite numerous late year with small numbers

from late Sep at Lancing Clump (max 8 on Oct 18), No Man's Land, Sheepcote (max 9 on Sep 30) and Widewater. In November and December noted at Adur, Airfield, Beeding Brooks and King's Barn Levels. None reported from Hollingbury Camp this year.

1146 WHEATEAR *Oenanthe oenanthe*

Common passage migrant

Some high numbers in Mar included the first on 20th at Marina, 22 at Sheepcote on 25th, and a big fall on 28th with 15 at Goring Gap and Widewater and 34 at Worthing Beach. Falls continued in Apr with 8 at Worthing on 10th and 24 at Sheepcote the next day. Successful breeding took place at Southwick, with a pair fledging 3 young. This is the first nesting record since the 1970's. Generally the autumn passage was poor with migration spots of Cissbury, Goring Gap, Hollingbury Camp and Worthing Beach all reporting very low numbers. The exceptions were Steyning Roundhill with 20 on Aug 27, 15 on 31st and 20 again on Sep 6. There were quite a few records for early Oct from 8 sites, most from coastal areas. Last were at Goring Gap (20th), Portslade Beach (25th) and Shoreham Fort (29th).

1186 RING OUZEL *Turdus torquatus*

Regular passage migrant

Only 4 spring records with males at Cissbury on Apr 6 and 22, and another on Hollingbury Camp on Apr 14; and a female at Sheepcote on Apr 21. An excellent autumn followed, the main sites being Wildpark area with 3 on Sep 25, 2 on Sep 30, 2 on Oct 4 and 10, 1m on Nov 7. At Sheepcote there were 4 on Sep 25, 4 different birds on 26th, 28E on Oct 7, 3 on Oct 9, 4 on Oct 10 and 1W on Nov 4. Also reported from Beeding Hill with 1 on Oct 11, and 2 at Goring Gap on Oct 6.

1187 BLACKBIRD *Turdus merula*

Very common resident

An early nesting bird in Pavilion Gardens, Brighton on Feb 18. Breeding counts were Bevendean Down 37prs, Cissbury 5 prs, Wildpark 125prs and Withdean Park 37prs. At Cissbury 28 birds were ringed. The only late year count was 58 at Wildpark on Nov 27.

1198 FIELDFARE *Turdus pilaris*

Common winter visitor

This winter visitor produced very few records in 1998. Early year were 80 on Henfield Levels on Jan 11, 60 at Sullington Hill on Jan 25 and 6 at Beeding Hill on Mar 28. Late year birds started with 30 at King's Barn Levels on Nov 9, then max 1,000 on Beeding Brooks on Nov 28, 400 at Beeding Hill the next day, and 100 at Lower Standean on Dec 4. Smaller numbers were noted from Chantry Hill, Hollingdean and Steyning.

1200 **SONG THRUSH** *Turdus philomelos*

Fairly common resident

Breeding records were Bevedean Down 2 prs, Cissbury 2 prs, Steyning area 14 prs, Upper Beeding 2 prs, Wildpark 15 prs and Withdean Park 11 prs. At Cissbury a total of 28 were ringed during the year.

1201 **REDWING** *Turdus iliacus*

Common winter visitor

As usual, far greater numbers than Fieldfare, although only 40 at Durrington in Jan, and none anywhere in Feb. March movement included 100 at Beeding Hill, 200 at East Brighton, 40 at Henfield Levels, 350 at Sheepcote and 200+ on 2 dates at West Worthing. All the larger counts were in the last few days of Mar. The last winter bird was at High Salvington on Apr 1. First for the autumn were 2 at Wildpark on Sep 10, where generally low numbers recorded, max 18 on Dec 11. The only large flock was 100 at Beeding Hill on Nov 23. There were 50 at Lower Standean on Dec 10, otherwise smaller numbers than usual.

1202 **MISTLE THRUSH** *Turdus viscivorus*

Common resident

Breeding counts were from Bevedean Down 2 prs, Wildpark 7 prs and Withdean Park 4 prs. There were 2 large flock counts with 37 at Harrow Hill on Jul 28 and 30 in Findon Valley on Aug 29.

1236 **GRASSHOPPER WARBLER** *Locustella naevia*

Generally scarce passage migrant

One in gardens by Adur Saltings on Aug 16 was the only record.

1243 **SEDGE WARBLER** *Acrocephalus schoenobaenus*

Fairly common summer visitor

First of the spring were 2 at Ferring Rife on Apr 18, and 2 at Shoreham Airfield on 23rd. The only other migrant reported was 1 at Wildpark on May 5. Up to 6 present at Ferring Rife during May, with probably 1-2 prs breeding. One was ringed at Cissbury on Aug 1 and 1 found dead in centre of Brighton on Aug 4. There were no other autumn records.

1251 **REED WARBLER** *Acrocephalus scirpaceus*

Fairly common summer visitor

The first were 4 at Airfield on Apr 24. Breeding season counts were Ferring Rife 3 prs, New Salts Farm 3 prs, old Railway Line 3 prs and Woods Mill 2 prs. The only migrant birds reported were ringed at Cissbury with 22 from Jul 25 to Sep 27.

1262 **DARTFORD WARBLER** *Sylvia undata*

Autumn migrant, increasingly recorded in winter

The resident bird at Hollingbury Camp was singing in Apr/May and the last confirmed sighting was in July, coinciding with massive clearance of scrub and gorse. A singing male on Sep 24 and 1 on Oct 9 were likely to be passage birds.

1274 LESSER WHITETHROAT *Sylvia curruca*

Fairly common summer visitor

First of the year were 5 at Wildpark and 1 at Sanctuary on Apr 25. Few other birds were noted as spring arrivals, and breeding records showed quite a downturn with Bevendean Down 2 prs, Cissbury 3 prs and Wildpark 2 prs, and no breeding at Goring Gap. There were 5 birds ringed at Cissbury from May 9 to Sep 20. Records for the autumn were 10 at Chantry Hill on Aug 16; total 28 at Wildpark with max 5 on Sep 5; 2 at New Salts Farm on Sep 19 and the last at Goring Gap on Oct 2.

1275 WHITETHROAT *Sylvia communis*

Common summer visitor

First for the year as at Wildpark on Apr 18, followed by 6 at Steep Down on 22nd. Breeding counts were Benfield Valley 5 prs, Bevendean Down 9 prs, Cissbury area 7 prs, Goring Gap only 4 prs, Highdown Hill 2 prs, High Salvington 3 prs, Wildpark 29 prs and Withdean Park 1 pr. A total of 61 was ringed at Cissbury during the year, peak 16 on Jul 4. Some rather low autumn figures included only 91 total at Wildpark, with peak 14 on Sep 5; and 2 counts of 20 from Chantry Hill in Aug and Southwick Hill on Sep 5. The last was at Broadwater on Oct 5.

1276 GARDEN WARBLER *Sylvia borin*

Fairly common summer visitor

First noted on May 1. Breeding records were Bevendean Down 1 pr, Chanctonbury 1 pr, Cissbury 7 prs, Wildpark 1 pr and Woods Mill 2 prs. Recorded at several other sites in May but breeding not confirmed. A total of 26 were ringed at Cissbury from May 9 to Sep 27, max 9 on Aug 1; and 4 were ringed at Sanctuary on Aug 8. Extremely low numbers were noted in autumn from Lancing Clump and Wildpark.

1277 BLACKCAP *Sylvia atricapilla*

Common summer visitor, regular in winter

Wintering birds in Jan/Feb included 4 in urban Brighton, 2 Broadwater, 1 Goring, 1 King's Barn Levels, 1 Lancing, 2F Shoreham and 1 Worthing. Breeding records were Benfield Valley 3 prs, Bevendean Down 2 prs, Cissbury 2 prs, Wildpark 12 prs and Withdean Park 3 prs. Total birds ringed at Cissbury were 457 from May 9 to Nov 7, max 66 on Sep 12 and 75 on Sep 19. A high day count of 16 ringed at Sanctuary on Aug 29. Autumn count at Wildpark was a meagre 106 from Aug 5 to Oct 3, peak 10 on Sep 5. Wintering birds were noted from 8 sites.

1298 PALLAS'S WARBLER *Phylloscopus proregulus*

Very rare visitor, mostly late autumn

1 found in bushes by Marina Undercliff on Nov 18 (KBG). It stayed until the next day giving extremely close views throughout.



1308 WOOD WARBLER *Phylloscopus sibilatrix*

Fairly scarce passage migrant

The only records were in spring all from Wildpark with singles in April on 21st, 26th and 27th.

1311 CHIFFCHAFF *Phylloscopus collybita*

Common summer visitor, with small wintering population

During the early winter period 10 were reported over a wide area, and over a dozen in early Mar. There were few counts of definite migrants with 6 at Warren Hill on Mar 22, 4 in Pavilion Gdns the next day and peaks at Wildpark of 12 on Apr 11 and May 5. Breeding season records included Bevedean Down 2 prs, Cissbury 4 prs, Goring Gap 2 prs, High Salvington 2 prs, Wildpark 13 prs and Withdean Park 3 prs.

A total of 301 birds were ringed at Cissbury from May 9 to Oct 18, with autumn max 58 on Sep 12 and 44 on Oct 4. Other high counts were 35 at Wildpark on Sep 5, 30 at Waterhall on Sep 16, 20 at Mill Hill on Sep 20, 22 ringed at Sanctuary also Sep 20, 40 at Goring on Oct 5 and 35 there on 8th. There were dozens of Nov sightings inc 2 at Goring and Sheepcote, one of which was *tristis* type (IJW). Wintering birds continued through Dec with up to 5 present at Sheepcote, 2 at King's Barn Levels and singles at 6 other sites.

1312 WILLOW WARBLER *Phylloscopus trochilus*

Common summer visitor and passage migrant

Either under-reported in spring or very few passing through the area. First was at Beeding Hill on Mar 28, then 5 at Sheepcote on 30th. Few were noted at Cissbury and Wildpark. Highest count was 14 at New Salts Farm on Apr 19. Breeding records were Bevedean Down 2 prs, Cissbury 3 prs, Rock Common 1 pr, Wildpark 6 prs and Withdean park 1 pr. Noted as declining at Wildpark (from 10 prs in 1996) and none were reported breeding at Goring Gap. Probably bred at Chanctonbury, Fulking, Golding Barn, Patching and Washington.

A total of 102 were ringed at Cissbury between Apr 18 to Oct 4, max 26 on Aug 1. Under recorded in autumn period but a high count of 300 at Patching Woods on Aug 18. At the Wildpark fewer than usual with peak 22 on Aug 19. A late bird was at the Sanctuary on Sep 20.

1314 GOLDCREST *Regulus regulus*

Common resident, passage migrant and winter visitor

The only high early year count was 12 at Clapham Woods on Jan 14. There were 6 at Goring Gap on Jan 29 and smaller numbers wintering at King's Barn Levels, but none at Wildpark. March migrants included max 10 at Ferring Rife on 28th, 6 at Southwick on 25th but relatively few elsewhere. Probably bred in urban Brighton and Sullington Warren. At Cissbury 1 ringed on Apr 18, then 64 from Sep 12 to Nov 7, with max 27 on Oct 4. Autumn figures were the lowest for many years with only one other count in double figures - 10 at Goring Gap on Oct 20.

1315 **FIRECREST** *Regulus ignicapillus*

Regular passage migrant in small numbers, occasionally winters

1-2 wintering birds were in Brighton Cemeteries in Jan, and 1 at New Salts Farm on Feb 15. Single migrant birds were reported from Ferring Rife (singing), Sheepcote and Woodvale Cemetery during March. A very good number were seen late year. The first was 1 ringed at Cissbury on Oct 4, thereafter singles at Broadwater, another at Cissbury, Ferring Rife, Goring Gap, Pavilion Gardens/Brighton, Shoreham Sanctuary, Sompting Abbots and Southwick Beach. Higher numbers were max 5 at Sheepcote on Nov 25 and up to 3 present there until at least Dec 13, and also up to 3 in a Brighton Park on Nov 30.

1335 **SPOTTED FLYCATCHER** *Muscicapa striata*

Fairly common summer visitor and passage migrant

The only spring record was 1 at Cissbury on May 9. Bred in a nestbox in Hove but pulli found dead with cold. May have bred at Highdown Hill with 1 pr seen on Jun 14. Noted at 4 sites in Aug with max 6 at Patching on 2 dates. Two were ringed at Cissbury in Sep, the month producing a welcome 20 reports from Goring Gap, Highdown Hill, Hollingbury Camp, Hove, Sheepcote and Woods Mill. Singles were still around in Oct from Ferring Rife, Goring, Sheepcote, and the last at West Worthing on 10th.

1349 **PIED FLYCATCHER** *Ficedula hypoleuca*

Regular passage migrant

The only spring sightings were singles at West Worthing on Apr 23 and Woodvale Cemetery on May 5. Autumn passage was poor with 1 ringed at Cissbury on Jul 25, 1 at Lancing Clump on Aug 19 and 1F in Pavilion Gardens, Brighton on the late date of Oct 9.

1437 **LONG-TAILED TIT** *Aegithalos caudatus*

Common resident

Flocks included 9 at Findon Manor and 19 at Swandean Hospital during Jan. Breeding counts were Benfield Valley 1 pr, Bevendean Down 2 prs, Cissbury 1 pr, Sullington Warren 12 prs, Wildpark 9 prs and Withdean Park 1 pr. Six birds were ringed at Cissbury. Post breeding flocks included 19 at Durrington, 15 at Goring Gap and 25 at Findon Gallops.

1440 **MARSH TIT** *Parus palustris*

Fairly uncommon resident

The only confirmed breeding was 3 prs at Cissbury, but there were spring sightings from Chanctonbury and Wappingthorn. Reported as scarce at Woods Mill, occasional at Highdown Hill, Patching and West Durrington, most sightings being during winter months.

1442 **WILLOW TIT** *Parus montanus*

Fairly uncommon resident

The only record was 2 in Patching area on Jul 26.

1461 **COAL TIT** *Parus ater*

Fairly common resident

The few records received were singles at Wildpark in Feb/Mar, Warren Hill in Mar, Chanctonbury in May and unusually at Goring Gap on Oct 13. There were 2 birds at Broadwater on Aug 15.

1462 **BLUE TIT** *Parus caeruleus*

Abundant resident

Breeding records were Bevendean Down 10 prs, Cissbury 3 prs, Rock Common 3 prs, Sompting Abbots 4 prs in boxes, Wildpark 60 prs, Withdean Park 13 prs. A total of 53 were ringed at Cissbury from Apr 18 to Nov 7.

1464 **GREAT TIT** *Parus major*

Very common resident

Breeding counts were Bevendean Down 10 prs, Cissbury 3 prs, Wildpark 43 prs and Withdean Park 7 prs. Birds ringed at Cissbury were 43 from May 9 to Nov 7.

1479 **NUTHATCH** *Sitta europaea*

Uncommon resident

Confirmed breeding with 3 prs at Patching and 1 pr at Warren Hill. The only other records received were from Clapham Woods, Michelgrove and Washington Bostal. The status is similar to Treecreeper below.

1486 **TREECREEPER** *Certhia familiaris*

Uncommon resident

Reported from Highdown Hill and Warren Hill, and 2 prs bred at Patching. One was ringed at Cissbury on Nov 7. This species is under-recorded and the true status is uncertain.

1520 **GREAT GREY SHRIKE** *Lanius excubitor*

Rare winter visitor or passage migrant

In spring a bird present in the Cissbury area was seen by many observers. Found on Mar 30 near Lychpole Hill (RAI, JS, CW), it ranged over a wide area until Apr 19 (BM, CP et al). This is the first record since 1991.

1539 **JAY** *Garrulus glandarius*

Fairly common resident and winter visitor

Breeding counts received were from Cissbury, Durrington, Golding Barn and Wildpark. There were 5W at Benfield Valley on Oct 10, and 1N at Sheepcote on Nov 6, with 1-3 resident there, unusual for the site, through most of Nov.

1549 **MAGPIE** *Pica pica*

Very common resident

Breeding counts were Bevendean Down 8 prs, Wildpark 44 prs, Withdean Park 1 pr. There were no roost counts submitted, the only high count was 19 at Southwick Hill on Oct 4.

1560 **JACKDAW** *Corvus monedula*

Common resident

Early year counts were 220 at Lower Standean in Feb and 57 at roost at Sullington Warren in late Mar. Breeding counts were from central Brighton and Hove, but generally this species under-recorded. Unusual were 475W in 1.5hrs at Sheepcote Valley on Oct 18. It is thought that these were migrants. The last such large movement in Sussex was noted in 1983.

1563 **ROOK** *Corvus frugilegus*

Common resident

An extensive survey of breeding pairs produced: Clapham area 49, Clayton 6, Ditchling Beacon 22, Findon Valley 100prs in 5 rookeries, Harrow Hill 29, Michelgrove 30, Myrtle Grove 134, Patcham 30, Steyning 10 and Wyckham Wood 52. Birds were noted coming in off sea at Marina with 1 on Mar 17 and singles on 2 Apr dates. Feeding parties were poorly reported with 147 at Cissbury on May 9 the only count.

1567 **CARRION CROW** *Corvus corone*

Common resident

Early year counts were 500 at Lower Standean on Feb 20, 40 at Henfield Levels on Mar 14 and 75 at Goring Gap on Apr 28. Further occurrences of birds coming in off the sea were noted at Marina with 18 on Mar 24, 1 on 4 dates in Apr and 2 in May. There were also 4 flying out to sea on Apr 14. Breeding records were Cissbury 2 prs and Wildpark 15 prs. The only late year count was 26 on Hove Beach on Oct 3.

582 **STARLING** *Sturnus vulgaris*

Abundant resident and winter visitor

Early year roost counts were 2,300 at Southwick Power Station on Jan 2 and 32,000E at Hove to roost on West Pier on Jan 31. Flock counts at this time included 500 at Upper Beeding, 400 at Lower Standean and 900 on Adur Rec. Breeding counts were Bevendean Down 10 prs, Wildpark 30 prs and Withdean Park 18 prs. Late year flocks of 1,000 were noted at Waterhall on Sep 16 and at Beeding Hill on Nov 21.

1591 **HOUSE SPARROW** *Passer domesticus*

Very common resident

A roosting flock of 100 was at Belmont Nursery, Durrington on two Feb dates. Breeding season counts were Bevendean Down 9 prs, Wildpark 16 prs, Withdean Park 6 prs, but none in Findon Valley. At the Marina 3 flew in off sea on May 16. The post breeding flock at Hollingdean allotments was a declining 95 on Sep 5.

1598 **TREE SPARROW** *Passer montanus*

Scarce resident

Flock counts at Lower Standean at end of February ranged from 17-21 (IJW, PJW) but none were reported from elsewhere.

1636 **CHAFFINCH** *Fringilla coelebs*

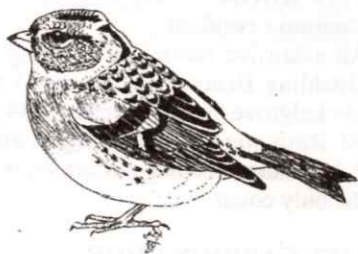
Very common resident

A flock of 20 was at Washington on Jan 28 and 6 in a Sullington garden were the only Winter counts. Breeding season records were Bevendean Down 9 prs, Cissbury 2 prs, Wildpark 39 prs, Withdean Park 8 prs. A total of 22 ringed at Cissbury from Apr 18 to Nov 7. Birds at Hove and Sullington were observed using nut feeders. In the autumn the only flocks were 30E at Cissbury on Oct 10 and Worthing Beach on Oct 30.

1638 **BRAMBLING** *Fringilla montifringilla*

Regular passage migrant

Two in a Sullington garden on Feb 17 and 2 at Lancing Clump on Apr 9 were the only spring records. Autumn passage was poor with max 8 at Cissbury on Nov 7 and smaller numbers from Oct 9 to Dec 9 from Brighton, Goring Gap, Lancing Clump, Sheepcote and Wildpark.



1649 **GREENFINCH** *Carduelis chloris*

Very common resident

There was a flock of 40 on Shoreham Beach on Jan 29 and a high 57 in a Southwick garden on Feb 15. Breeding counts were Bevendean Down 6 prs, Wildpark 35 prs (an increase), and Withdean Park 17 prs. Gatherings late year were 60 at Sompting Tip in Aug/Sep, 40 at Steep Down in Sep, 35W at Worthing on Oct 30 and a large flock of 200 for a period during Nov on Shoreham Beach.

1653 **GOLDFINCH** *Carduelis carduelis*

Fairly common resident

Very few flocks recorded early year with just 20 at Steep Down on Feb 15. The only breeding count was 3 prs at Wildpark. At Worthing, the May seawatching total was 46, and good autumn passage there with 30E on Sep 23, 70E on Oct 4, 54W on Oct 25 and 61W on Oct 30. Passage was also noted in Oct from Goring Gap with peaks 110 on 6th and 230 on 9th, and 110 at Wildpark on 8th. Feeding flocks included 50 at Coombes on Aug 26, 120 at Myrtle Grove Farm on Oct 4, 20 at Cissbury on Nov 7, and 21 at High Salvington on Dec 16.

1654 **SISKIN** *Carduelis spinus*

Fairly common passage migrant and winter visitor

Generally small numbers reported early year from mainly inland sites - Goring, Henfield Levels, High Salvington and Warren Hill. Counts of 20 around Stanmer Woods/Sussex University on Jan 16 and Feb 2 indicated a sizable roving flock. Also during the first three months birds made regular visits to a Steyning garden, with max 7 on Mar 3. Flyover passage was noted at Wildpark with just 8 between Jan 16 and Mar 31, but amazingly none at all in autumn. From Sep 20 to Nov 11

the only migrants noted were small numbers from Cissbury, the Sanctuary and Southwick, and max 28 at Goring Gap on Oct 9.

1660 **LINNET** *Carduelis cannabina*

Locally common resident and passage migrant

Early year flock counts were 30 at Coombes on Feb 15, max 80 at Steep Down on Feb 15, 40 there on Apr 16, and 120 at Edburton on Apr 5. Migration counts at Worthing Beach were 27 in Mar, 69 in Apr and 161 in May, max 65E on May 8. Breeding records were Bevendean Down 5 prs, Highdown Hill 2 prs and Wildpark a decline to only 7 prs. Post breeding flocks of 40+ were present at Coombes, Goring Gap, Shoreham Beach, Sompting Tip and Wildpark. Regularly noted at Steep Down with max 200 there on Oct 6. There was no specific mention of these late year flocks as being fly-over migrants.

1662 **TWITE** *Carduelis flavirostris*

Rare winter visitor

2NW at Sheepcote Valley on Feb 21 was the only record (ADW)

1663 **REDPOLL** *Carduelis flammea*

Scarce passage migrant and winter visitor

A rather poor year, with none at all reported early year. In the autumn all records were as follows - 2 at Sanctuary on Oct 3; at Cissbury 13 on Oct 18 and 10 on Nov 7; at Wildpark 2 on Oct 10 and 1 on Oct 30; 1E at Goring Gap on Nov 23 and 2 on the same day at Woods Mill.

1666 **COMMON CROSSBILL** *Loxia curvirostra*

Scarce visitor, more common in eruption years

The only records were 3W at Warren Hill on Mar 22 and 11NE over Hollingdean on Sep 17.

1710 **BULLFINCH** *Pyrrula pyrrula*

Fairly common resident

Four were seen at Findon Park Farm on Jan 28. Confirmed breeding counts were Bevendean Down 1 pr, Cissbury 2 prs, Wildpark 4 prs, Withdean Park 1 pr. Also noted in breeding season from Golding Barn, Sandgate Park, Southwick Hill, Sullington and Wappingthorn. One at Goring Gap on Nov 30 was reported as unusual here. Birds ringed at Cissbury totalled 28 from Apr 18 to Nov 7.

1717 **HAWFINCH** *Coccothraustes coccothraustes*

Scarce vagrant

A single flew W at Cissbury on Nov 7 (SRG)

1850 **SNOW BUNTING** *Plectrophenax nivalis*

Scarce passage migrant and winter visitor

One was heard only at Lower Standean on Feb 20 (IJW).

1857 YELLOWHAMMER *Emberiza citrinella*

Locally common resident

Early year flocks included 6 at Washington in Jan, max 15 at Cissbury and max 22 at Upper Beeding in Feb. Breeding counts were Bevendean Down 4 prs, Beeding CW 1 pr, Cissbury 1 pr, Wildpark 11 prs and Wolstenbury Hill 3 prs. Sightings during nesting period were received from 8 other sites may have indicated further breeding. A flock of 35 was at Botolphs on Dec 28.

1877 REED BUNTING *Emberiza schoeniclus*

Locally common resident

There were visits early year to a Steyning garden. Reported inland from downland sites in Feb with 5 at Steep Down on 20th and 1 at Ditchling Beacon on 28th. The only breeding counts were Lower Adur 2 prs and Woods Mill 1 pr. Migrants noted in the autumn with singles at Wildpark on Oct 3 and 9, and 18 at Sheepcote on Oct 15. Max 5 at Ferring Rife in Dec, where breeding was unproven. There was an interesting roost count of 30 at Woods Mill.

1882 CORN BUNTING *Miliaria calandra*

Locally common on downland

Although in decline nationally, it was pleasing to receive over 30 records for the area. Early year flocks included 50 at Mill Hill on Jan 31, 21 at Lower Standean and 25 at Steep Down on Feb 20. Unusually 4 were seen and heard coming in off the sea at Marina on May 7, only the 2nd instance for Sussex. Singing males and confirmed breeding were from Anchor Bottom 2prs, Beeding Hill 2prs, Chantry Hill-Harrow Hill 4 prs, Coombes area 4 prs, Findon Park Brow 3 prs, Mill Hill 1pr, Patching 3 prs, Steep Down 6 prs, Sullington Hill 1 pr. Negative breeding reports were from Southwick Hill and Sheepcote. Winter flocks reported were 20 on 2 dates in Sep at King's Barn Levels and also 20 at Stump Bottom on Nov 22.



ESCAPES AND FERAL BIRDS IN 1998

BARNACLE GOOSE Four flew E at Marina on May 15. 1 with Canada Geese on Henfield Levels on Dec 13 and 1 inside Marina 2 dates in Dec.

BLACK SWAN Two first noted SW at New Salts Farm on Sep 19, subsequently seen until Oct 21 at Widewater and Brooklands.

BUDGERIGAR White bird at Portslade on Sep 30.

CANARY 1 at Shoreham on Oct 20.

COCKATIEL Unusually 1 at Marina on Mar 20; and another at Sheepcote Valley on Oct 3.

MUSCOVY DUCK 3 were at Widewater on Jan 30.

ADDITIONS TO 1997 REPORT

PONTIC GULL A subspecies of yellow-legged Gull, and the first for our area. 1 seen on the Adur at Shoreham on Sep 15 (RJF) and has been accepted by SOS.

UPDATE OF RARITY RECORDS

Recent BBRC decisions and confirmation of records accepted by the Sussex Ornithological Society are listed below:

1997 - All the following records have been accepted:

0012 **BLACK-NECKED GREBE** Adur Jan 9

0046 **MANX SHEARWATER** all records

0239 **RED KITE** all records except Cissbury Aug 22

0263 **MONTAGU'S HARRIER** Storrington Aug 9

0267 **GOSHAWK** Storrington Sep 20

0599 **GLAUCOUS GULL** Worthing/Widewater Feb 19-23 and Worthing Apr 6

0654 **PUFFIN** Southwick Mar 24

0798 **ALPINE SWIFT** Worthing May 14

1437 **LONG-TAILED TIT** 2 white-headed of European origin at Whitehawk Hill on Oct 26

1515 **RED-BACKED SHRIKE** Sheepcote May 31

ARRIVAL AND DEPARTURE OF MIGRANTS IN 1998

SPECIES	ARRIVAL	DEPARTURE
Hobby.....	May 11.....	Chanctonbury..... Sep 26..... Airfield/Cissbury
Whimbrel.....	Mar 18.....	Marina..... Aug 18..... Worthing
Common S'piper.....	April 10.....	Brooklands..... Sep 26..... Broadwater
Sandwich Tern.....	Mar 17.....	Marina..... Oct 8..... Marina
'Commic' Tern.....	March 28.....	Marina..... Oct 28..... Worthing
Little Tern.....	Apr 19.....	Marina..... -..... -
Black Tern.....	Apr 29.....	Worthing..... Sep 30..... Marina
Turtle Dove.....	Apr 26.....	Coombes..... Sep 13..... Sheepcote
Cuckoo.....	May 2.....	Woods Mill..... Aug 22..... King's Barn Levels
Swift.....	Apr 22.....	Worthing..... Oct 6..... Brighton & Hove
Sand Martin.....	Mar 29.....	Marina..... Oct 4..... Worthing
Swallow.....	Feb 20.....	Marina..... Nov 9..... Shoreham Hbr
House Martin.....	Apr 22.....	Upper Beeding..... Nov 2..... Woods Mill
Tree Pipit.....		Oct 9..... Goring Gap
Yellow Wagtail.....	May 3.....	Ferring Rife..... Oct 20..... Goring Gap
Nightingale.....	Apr 20.....	West Worthing..... Sep 8..... Cissbury
Redstart.....	Mar 30.....	Cissbury..... Oct 10..... Cissbury/Marina
Whinchat.....		Oct 18..... Sheepcote
Wheatear.....	Mar 20.....	Marina..... Oct 25..... Portslade Beach
Ring Ouzel.....	Apr 6.....	Cissbury..... Nov 7..... Wildpark
G'hopper Warbler.....		Aug 16..... Adur Saltings
Sedge Warbler.....	Apr 23.....	Shoreham..... Aug 4..... Brighton
Reed Warbler.....	Apr 24.....	Shoreham..... Sep 27..... Cissbury
Lesser Whitethroat.....	Apr 25.....	Wildpark..... Oct 2..... Goring Gap
Whitethroat.....	Apr 18.....	Wildpark..... Oct 5..... Broadwater
Garden Warbler.....	May 1.....	Cissbury/Wildpark..... Sep 27..... Cissbury
Willow Warbler.....	Mar 28.....	Beeding Hill..... Sep 20..... Sanctuary
Spotted Flycatcher.....	May 9.....	Cissbury..... Oct 10..... West Worthing
Pied Flycatcher.....	Apr 23.....	West Worthing..... Oct 9..... Brighton

This feature has been compiled from records submitted by local observers.

RINGING REPORT FOR 1998

The ringing totals for 1998 showed a 9% reduction on 1997 with 2484 birds ringed. As usual most were trapped as fledged birds but 310, a higher proportion (12.5%) than usual, were ringed as nestlings. Although the pulli included 7 Kestrel, 2 Stock Doves, 2 Tawny Owls and 3 Nuthatches the largest number (225) were box nesting Blue and Great Tits. Nearly 72% of the area total was caught by the Steyning Ringing Group operating from their usual three sites. Mist netting in the managed low scrub on the north slopes of Cissbury produced 1457 birds and here, Brian & Phil Clay, Val Bentley, David King and Ralph Hartfree trapped good numbers of Chiffchaffs and Blackcaps whilst enjoying the occasional Firecrest, Redstart and Nightingale. Fortunes at the Mumbles declined this year as Phil Clay's total of 226 was 60% down but here the area's only Willow Tit and Jay were trapped. The group's totals were augmented by Chris Fox's ringing of 98 nestlings at Wiston and Sompting Abbots. A small improvement in the catch at the Sanctuary (476) was welcomed and John Newnham's total was completed with 9 garden ringed Blue Tits. Barrie Watson, helped by John and Charlie Holt, aggregated 218 of which 188 were ringed as nestlings.

The table below shows the numbers of the 41 species ringed. Many species have been ringed in similar numbers for many years. There were notable increases in the numbers of Chiffchaffs and Blackcaps caught whilst Blackbirds, Whitethroats, Willow Warblers and Goldcrests all declined. The number of finches ringed continued at a dismally low level.

List of species ringed		
Sparrowhawk.....	1	Song Thrush.....52
Kestrel.....	8	Sedge Warbler.....7
Stock Dove.....	2	Reed Warbler.....101
Woodpigeon.....	1	Lesser Whitethroat.....19
Tawny Owl.....	2	Whitethroat.....65
Kingfisher.....	1	Garden Warbler.....33
Green Woodpecker.....	8	Blackcap.....537
Swallow.....	15	Chiffchaff.....410
Wren.....	67	Willow Warbler.....178
Dunnock.....	122	Goldcrest.....65
Robin.....	154	Firecrest.....2
Nightingale.....	3	Spotted Flycatcher.....2
Redstart.....	2	Pied Flycatcher.....1
Blackbird.....	99	Long-tailed Tit.....30
		Marsh Tit.....2
		Willow Tit.....1
		Blue Tit.....276
		Great Tit.....125
		Nuthatch.....3
		Treecreeper.....3
		Jay.....1
		Starling.....5
		Chaffinch.....34
		Greenfinch.....7
		Goldfinch.....3
		Siskin.....6
		Bullfinch.....36
		Yellowhammer.....1
		TOTAL.....2484

Recoveries and Controls

The following is a selection of the more interesting movements reported during the year, several refer to movements from previous years:

1) **Black-headed Gull:-** The recoveries of Black-headed gulls ringed in the area and reported during 1998 were from:-

UK recoveries		Foreign recoveries	
Sussex	5	Netherlands	3
Surrey	1	Germany	1
Hampshire	1	Denmark	1
Dorset	1	Sweden	2
Suffolk	1	Norway	1
		Finland	5

One of the Finnish birds was ringed as a second year at Washington on 31st July 1993 and subsequently sighted (presumably at a colony) at Sapokka, Kymi, Finland (60°27'N 26°56'E -2005km) between May and July 1994, in May 1995, in April 1996 and in May 1998. The German recovery was ringed at Sompting in January 1987 and has been seen near Munster in November 1994, December 1995, November 1996 and November 1997. One of the Swedish bird too has a multiple retrap history having been ringed at Sompting in February 1986, seen in Denmark in March 1987 and 1988 before being captured in Sweden in June 1998.

2) **Common Gull:-** A single recovery was reported which involves an oldish bird.

Ringed 26th Jan 1980	adult	Sompting, Worthing (50°51'N 0°20'W)
15th Oct 1997	found	Dalabrekka Skole, Kristiansund, More og Romsdal, Norway (63°7'N 7°47'E) 1447km, 6472days.

3) **Herring Gull:-** The four movements conform with the pattern shown on the map on page 74 *The Birds of Shoreham* and are single recoveries from Belgium, the Netherlands and two from Sussex.

4) **Reed Warbler:-** Like last year these are typical movements reported for this species.

Ringed 31st May 1997	adult male	Mumbles, Steyning	50 54'N 0 19'W	
1st Aug 1998	controlled	Littlington, East Sussex	50 49'N 0 09'E	35km 109 deg 427 days.
Ringed 4th Aug 1996	first year	Wilstone Reservoir, nr Tring, Herts	51.48'N 0.42'W	
8th Aug 1998	controlled	Mumbles, Steyning	50 54'N 0 19'W	105km 165 deg 734 days.

5) **Garden Warbler:-** Although not a long distant movement this bird was at least four years old.

Ringed 28th Jul 1995	adult	Cissbury	50 52'N 0 23'W	
20th May 1998	controlled	Aldhurst Farm, Surrey	51 09'N 0 19'W	32km, 8deg, 1027 days

6) Blackcap:- Once again a good collection of British recoveries.

Ringed 15th Sept. 1996	juvenile female	Cissbury	50 52'N 0 23'W	
23rd April 1998	found dead	Kettering, Northamptonshire	52 23'N 0 43'W	170km, 352deg, 585days.
Ringed 1st Aug 1998	juvenile	Cissbury	50.52'N 0.23'W	
18th Sept 1998	controlled (male)	Icklesham, Sussex	50.49'N 0.40'E	74km 87deg 48days.
Ringed 15th Aug 1998	juvenile (male)	Shoreham Sanctuary	50.50'N 0.17'W	
6th Sept 1998	controlled (male)	Beachy Head, Sussex	50.44'N 0.15'E	39km 107deg 22days.
Ringed 11th Aug 1998	first year male	Winterset Res'r, Wakefield, W.Yorks	53.79'N 1.26'W	
18th Oct 1998	controlled	Cissbury	50.52'N 0.23'W	314km 167deg 68days.

7) Chiffchaff:- An excellent year with one foreign and 4 British recoveries reported.

Ringed 3rd Oct 1997	first year	Cissbury	50 52'N 0 23'W	
31st March 1998	found dead	Ribadesella, Oviedo, Spain	43 28'N 5 04'W	895km 203 deg 179 days.
Ringed 23rd Sept. 1995	first year	Cissbury	50 52'N 0 23'W	
23rd April 1998	controlled adult	Hilbre Island, Cheshire	53 22'N 3 14'W	339km 325 deg 944 days.
Ringed 21st Sept. 1997	first year	Cissbury	50 52'N 0 23'W	
7th April 1998	controlled adult	Languard Point, Suffolk	51 56'N 1 19'E	167km 45 deg 198 days.
Ringed 4th Oct 1997	first year	Cissbury	50 52'N 0 23'W	
19th April 1998	found dead	Lamberhurst, Kent	51 20'N 0 24'E	75km 47 deg 197 days.
Ringed 27th July 1997	juvenile	Wellow Park, Newark, Notts	53 12'N 0 59'W	
19th Sept. 1997	controlled first year	Cissbury	50 52'N 0 23'W	262km 171 deg 54 days.

8) **Goldcrest:-** During the past few years the ringing at Cissbury has been rewarded with some interesting movements of this tiny 5 gram bird. This young male, presumably caught on passage, continued its southward journey in haste.

Ringed 12th Oct first year male Mumbles, Steyning 50 54'N 0 19'W
1997

14th Oct 1997 controlled La Coupe, St
Martin, Jersey 49 14'N 0 01'W 220km, 213deg,
2days.

Like previous years there were several local recoveries and many birds were retrapped in successive years. All help to build information on movements and population sizes.

John Newnham

STEYNING RINGING GROUP REPORT 1998

On sitting down to write this report in the fifth month of 1999, a cursory glance at the statistics made it appear that 1998 was a very standard year. The total of ringed birds at Cissbury was very similar to 1997. The Constant Effort ringing (CES) figures were slightly improved, however, and the unusual or interesting bits and pieces turned up on cue. However, what the figures did not portray was that the number of ringing sessions at Cissbury was much lower than previous years. Although 11 out of the 12 CES sessions from May to August were completed as usual, in the autumn the number of sessions was well down on the previous year. Virtually every weekend during August, September and October was covered on Friday Saturday and Sunday during 1997 whereas 1998 did not get such coverage as the table below shows.

Month	1997			1998		
	No. Sessions	Total new birds	Av. per Session	No. Sessions	Total New Birds	Av. per Session
May	4	96	24	3	56	19
June	4	100	25	2	62	31
July						
Aug	11	447	41	5	220	44
Sep	8	538	67	6	643	107
Oct	6	252	32	3	265	88

So this analysis paints a different picture. The average catches for CES sessions were slightly lower in May but they did pick up in June, but with only 2 sessions compared to 4 in 1997 the figures are not really comparable. Come the autumn the averages for each month were higher for each month with October's 1998 average more than double 1997. If the number of sessions in 1998 were the same as in 1997 the final grand total would have been more than double.

The 1998 totals for the species listed in the 1997 report were as follows:-

Species	Ad	Juv	Species	Ad	Juv	Species	Ad	Juv
Wren	14	11	Dunnock	13	23	Robin	4	22
Blackbird	18	6	Lsr W'throat	8	4	Whitethroat	8	13
Garden Warbler	10	11	Blackcap	12	63	Chiffchaff	5	23
Willow Warbler	8	34						

These figures do reflect the national trend that short distance migrants, Chiffchaff and Blackcap, are faring much better than long distance Whitethroat Garden and Willow Warbler.

The first ringing session of the year was our set up session when ten birds, including a Goldcrest, were caught. A Kestrel was trapped on the 3rd May. Kestrels are most often noted feeding over the site when the winds are in the north.

Very little happened with Willow Warbler passage with a peak of only 26 on 1st August. An early Pied Flycatcher occurred on July 26th with Nightingales on the 1st and 11th of July and also on August 9th. The highest daily total of Blackcaps were trapped on the 19th September with a peak of 57 Chiffchaff on the 12th. Two Spotted Flycatchers were caught in September, one Redstart was trapped on the 27th with a late one on 10th October. Only one Firecrest was caught in October on the 4th when 27 Goldcrests were also trapped. The final session was wrapped up on the 7th November with another Firecrest as the final highlight.

During the year only six sessions were operated at the Mumbles ringing a total of 226 new birds, 49 of them Reed Warblers. The "Open Day" in July produced 33 new birds and twelve birds were trapped from the previous year. The visitors were shown the birds in the hand and given guided walk around the 2.5 acre site.

The management work at Cissbury continued into its fifth year but with the major work now nearing completion the site maintenance should be the priority for the next years.

Of the observations that take place whilst sitting at the table ringing the birds, Peregrines are always a welcome sight, the first of the year being on the 25th July and 9th August with Kestrels and Sparrowhawks also regularly seen. The first Swifts were seen over the site on 30th May and the last on 29th August. A Curlew flew over on the 31st August and another on the 19th September. A Grey Heron appeared on 20th September, and on 4th October a Buzzard was seen. A lone Brambling was heard on the 10th October when over 70 House Martins were about. A ring-tail Hen Harrier flew over the hill on the 18th October and the first Redwings of the autumn heralded the close of the season. A winding-down session on 7th November produced 4 Brambling, 20 Siskin and a probable Hawfinch.

Thanks to Vic Oliver, the National Trust warden at Cissbury for all his help and co-operation.

Phil Clay

SANCTUARY REPORT 1998

This annual review of activity at the sanctuary is based on notes from at least 60 visits recorded by Dr Barrie Watson and myself. There was a small increase in mist-netting sessions to 18 and as usual these were all morning visits between 9th May and 10th October. The table below showing the crude annual ringing statistics for the past eleven years, shows a small improvement from 1997 but still well behind the numbers caught a decade ago.

Summary of ringing effort and results for 1988 - 1998											
	1988	1989	1990	1991	1992	1993	1994	1995	1996	1997	1998
No sessions	26	19	19	9	13	16	14	16	16	13	18
Av. catch	45	50	52	31	32	31	37	38	27	25	34
Year best	253	135	94	56	53	49	70	66	55	46	55

During January and February the water levels were very high, at times many of the paths were submerged and access was always difficult. A small party of Goldfinches, up to 220 Lapwings resting in the fields, and a Barn Owl quartering the reed fringed ditches on 21st January were the ornithological highlights of this often bleak period. For the past few years a small group of Roe Deer have sheltered in the copse during the day; 3 on 7th February was the largest number seen. On 22nd February, an early date, there were 4 large clumps of Frog spawn in one of the traditional spawning areas and both Violets and Marsh-marigolds were in full bloom; the latter benefiting considerably from the clearing work done in the centre of the copse during the last few winters and the high spring water level.

Also benefiting from more light the Yellow Flags produced a resplendent display between mid-April and May. Migrant birds, however, were not quite so obvious. At least one Chiffchaff was seen on each trip after 8th March but numbers were low with a maximum of only 3 reached on both 29th March and 8th April. Two Blackcaps had also arrived by 8th April but the first Willow Warblers were not recorded until 19th April. The first Lesser Whitethroat was rattling in the scrub on 25th April but the first Reed Warblers were not heard until early June. During May and June there were plenty of damselflies by the main stream with at least 12 (8 males) Beautiful Demoiselles on 19-20th May; the appearance of this species was short-lived as none were seen on 24th May with just one female on 8th June being the last record.

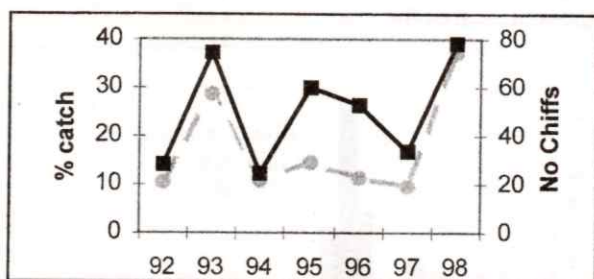
Nesting fortunes were mixed, both Turtle and Stock Doves were present and calling in May but had gone by June. At least 3 pairs of Chiffchaffs bred, their monotonous song continuing throughout the summer. At least 2 pairs of Blackcaps and likewise probably 2 pairs each of Whitethroats, Lesser Whitethroat and Reed Warblers attempted nesting. Tawny Owls occupied the nesting box but on 19th April a male was found dead on the ground near the nest box. However, 2 pulli were ringed 10 days later when they were described to be in good health and

a dead rat was in the nest box. The tit boxes housed 3 broods of Great Tits and 5 broods of Blue Tits of which two broods failed.

Sadly no Flowering Rush was seen this year but there was minor excitement when the small white flowers of Brookweed were found amongst the Water-cress and Fool's Water-cress. During the summer the main stream was overgrown by an alien species, Azolla or Water Fern, which caused considerable stagnation and an unpleasant methane smell in late August. Finally in the botanical theme only 100 spikes of Autumn Lady's-tresses were counted on 23rd August, all had gone by 12th September.

Although 5 Garden Warblers were trapped on 2nd August and Blackcaps, Reed Warblers and Chiffchaffs regularly turned up in the mist-nets there were, like the last few years, no really good passage days recorded this autumn. The more interesting records came from observation rather than ringing; Peregrines were seen on 8th and 23rd August and a parrot *sp* was calling raucously but offering only brief views as it flew about on the hillside on 8th August. Visible migration over the copse was poor on mist-netting days with only a few pipits, Grey Wagtails and hirundines recorded in September and records of only 2 Redpolls and a single Siskin in October.

A feature of this autumn was the notable number of Chiffchaffs seen everywhere; the movement through the Sanctuary was also better than recent years. Indeed it is probably that without this species the September and October mist-netting would have been very lean. The following figure, showing the number trapped (heavy line) and the proportion of the catch (pale line) for the past 7 years, demonstrates that nearly 40% of the birds trapped were this species.



Chiffchaffs lingered late into the year with at least one recorded on each visit in November and last seen on 6th December. Water Rails, a species which used to be regularly winter in the copse, were recorded after 21st November. One could usually be seen foraging by the main stream or heard squealing from the reeds but on 21st November a Water Rail was seen flying over the copse eventually pitching into the dense hawthorn scrub on the hillside. Other highlights as the year was closing included a Firecrest seen on 29th November and 2 Dabchicks, the first for many years, on 13th December.

Throughout the period the usual clearing and maintenance tasks were completed. Only a small area of willow and elder on the north side was coppiced and pollarded during the early months. Between May and August all the paths were regularly cleared and despite using power-tools the task remains quite time and energy consuming. During November more of the central area of osier was cleared but rapidly rising water levels prevented completion of the work by the end of the year.

I would like to express the society's thanks to Mr W. Schultz and to the staff of Southern Water for their continuing help and co-operation. I also thank Mark Newnham for his regular help with the gardening and Dr Barrie Watson for help with maintenance and the ringing activities.

John Newnham

WORTHING SEAWATCHING REPORT FOR 1998

Introduction.

During 1998 a total of 207 hours of watching was logged; showing a small (11%) increase on 1997 and a reversal of recent trend of reducing effort. The hours watched at Worthing, however, now compares poorly with the 660 hours of observations recorded from Brighton Marina. Like most recent years the major sea-watching effort was recorded during the spring (March to May) when there is a more predictable chance of seeing a good passage or recording an unusual species. During 1998 over 61% of the watching was in this season with 32% in May alone. Figure A demonstrates this clearly and shows a reasonably constant effort throughout the rest of the year.

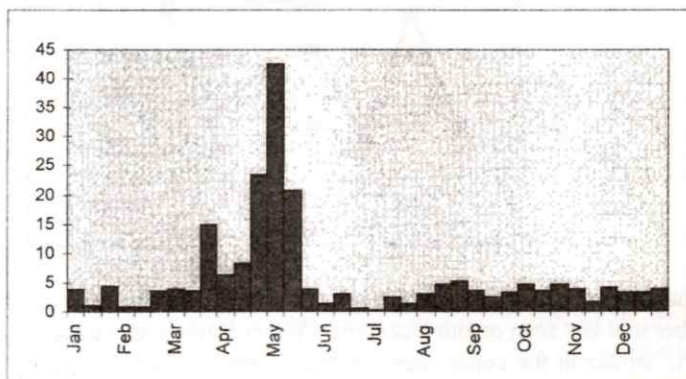


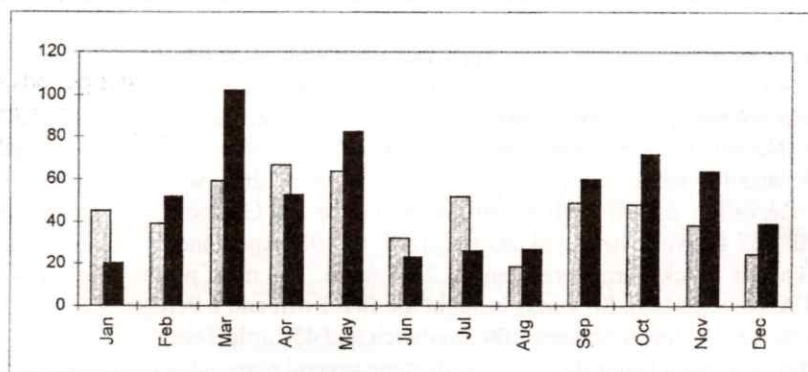
Fig A Number of hours seawatching at Worthing during 1998 in 10 day periods

The total of 13,358 non-passerines logged was a welcome increase on the poor numbers seen in 1997 but the year still only produced an overall rate of 65 birds per hour watched. These figures and the table below excludes the large numbers

of passerines which can be seen moving along the coast, particularly in the autumn months.

Hours watched and total numbers of birds seen												
	Jan	Feb	Mar	Apr	May	Jun	Jul	Aug	Sep	Oct	Nov	Dec
Hours	9	5	22	38	67	5	4	13	9	13	10	11
Total	190	275	2251	2006	5557	112	116	349	560	914	618	410
Birds/hour	20	52	102	53	83	23	26	27	60	72	64	39

The following figure demonstrates graphically the monthly trends in 1998 (black) compared with 1997 (pale) and clearly shows March and May to be better than 1997 with more birds also recorded throughout the autumn period. Conversely April and the summer months were less productive.



The monthly rates of passage of all non-passerines at Worthing in birds/hour watched 1997 pale & 1998 black

Like previous years a daily log was passed around the observers for the period 1st April until 31st May and, as usual, most observations took place from the shelter opposite Marine Gardens, West Worthing but watches are included from other sites such as Ferring beach, Goring beach, Worthing pier, and Brooklands beach. Several watchers were present, especially in periods of potentially favourable winds during the spring but particular thanks go to the following observers who have contributed records to the daily log which form the basis of the records and this report.

P.M.Brayshaw, A. Carter, R.Edney, C.E.Hope, R.A.Ives, J.A.Newnham, R.J.Sandison, D.I.Smith, and R.Tofts.

Chronological Account

The preceding figures show January was unexciting; no cold weather movements were seen nor large movements of auks, divers or Kittiwakes; indeed only 26 divers and 13 auks were recorded in the month. As usual the eastbound passage of Brent Geese started in February with a total of 100 seen in the month, a Pere-

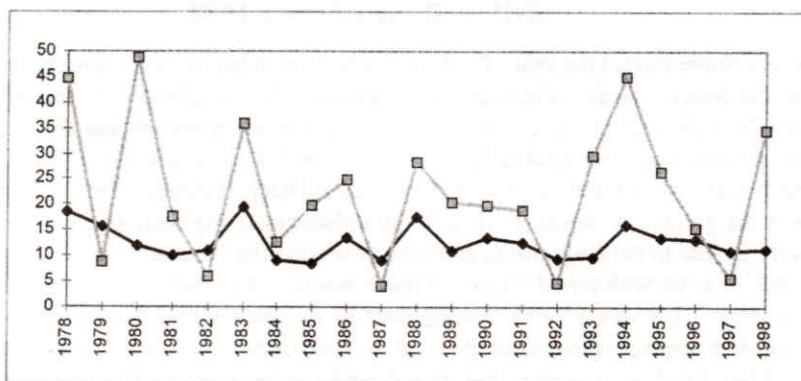
grine on 11th February and 23 Red-throated Divers moving east on 23rd were the only highlights of this usually dull month.

March is considered the first of the spring months and often can be interesting as the wintering wildfowl depart and the first of the summer migrants are seen moving north. Apart from Brent Geese there were no remarkable numbers seen; of the months total of 1229 Brents 269 passed in just 1 hour on 24th March and 809 in 7 hours watching on the 28th. The light southerly winds on 28th March produced several interesting records with 8 Slavonian Grebes offshore, at least 250 Sanderling on the shore, 34 Wheatears on the beach and 2 Shags, 5 Gadwall and 2 Garganey seen passing eastward. The first of the few Little Gulls seen in the spring occurred on 7th March and the first of the 19 Sandwich Terns in March was recorded on the 22nd. Two other records of interest were a count of 98 Red-breasted Mergansers offshore on 15th March and a Woodcock which flew south on the 21st.

In terms of numbers of birds April was poor with even fewer birds recorded than 1997. For much of the month cool winds blew but even during periods of warmer southerly or south-easterly winds there seemed few birds passing offshore. Notably few Common Scoter and Bar-tailed Godwits were seen with totals of 235 and 107 respectively. Despite the low numbers there were some noteworthy observation; on 9th April a Red-necked Grebe and Glaucous Gull were seen, the first of 16 April Arctic Skuas occurred on 19th April and 5 Mediterranean Gulls and a Black Tern were seen on 25th April. The most productive day was 22nd April when light SE winds brought the first Swift and a Peregrine coming in from the sea, 7 Velvet Scoters, 109 Sandwich and 45 Little Terns.

May was much better than 1997 with some several reasonable but no outstanding watches recorded. A total of 22 more Arctic Skuas were seen during the month and Pomarine Skuas were seen on 3 days. The longest watch of the year (over 15 hours) was on 8th May; eastbound birds seen that day included 3 species of skuas, 3 Shags, 2 Garganeys, 389 Sanderlings, 172 Dunlins, 35 Black Terns and over 1000 Common/Arctic terns of which 363 were specifically identified as Commons and 4 as Arctic Terns. Another 490 *commic* terns were seen on the 9th and with the month total approaching 1800 this year was one of the better years recorded. This is shown in the following figure which compares the rates of passage for Sandwich and *commic* terns for April and May for each year since 1978. This clearly shows a reasonably steady observation rate for Sandwich Tern compared with a widely fluctuating rate for *commic* tern; the latter only being observed in large numbers if frontal systems with associated south-easterly winds occur in the critical period in late April or May.

Additional highlights from the log in May were 4 and 3 Manx Shearwaters seen on 6th and 7th respectively, 2 Little Ringed Plovers and a Redstart on the 10th and an immature or female Marsh Harrier drifting in and eastward on 16th May.



Rates of passage (Birds seen/hours watched) of Sandwich Terns (dark line) & Common/Arctic Terns (pale line) during April & May 1978 - 1998

Like most years the summer watching was mainly from the beach hut in-between dips into the sea and apart from a few terns very little was seen however a Manx Shearwater on 23rd July and a Little Stint on 26th August were of interest. The first wintering wildfowl were first seen in late September with a Red-breasted Merganser on the 22nd, Brent Geese on the 26th and the only Goldeneye on 3rd October. A fresh SSW wind on 11th October induced 265 Gannets to pass west in 1.5 hours watching. Few passerines were recorded in 1998 with only 243 Goldfinches logged and most of these were, unusually, moving westward but a sight of 2080 Woodpigeons in the early morning of 30th October was quite impressive. The best of the November records were 7 Little Gulls on the 2nd, an Arctic Skua on the 7th and a Red-necked Grebe seen offshore between 29th November and 5th December. Towards the end of the year there were small movements of divers and auks with December totals of 20 Red-throated Divers, 39 *diver sp* and 151 *auk sp*, mostly moving eastward. Unfortunately on New Years Eve, when a large movement of auks were seen along the Sussex coast, no watching was recorded at Worthing.

John Newnham



INDOOR MEETINGS 1998

Keith Noble started the year of indoor meetings with his lecture, 'Sunday Morning on the beach, Sunday afternoon in the garden'. He delighted everyone with his excellent photographs of bird on Widewater, or on or by the sea and river, including a particularly memorable Mediterranean Gull at close quarters. Other notable birds were ringed and Kentish Plovers and a Black Redstart. The next location was his garden in Steyning, close to Bramber castle. As well as more birds we were treated to the frogs, toads and insects which visit his small ponds. On a small patch of grass with birdsfoot-trefoil there was also a Common Blue butterfly laying eggs! This was a very pleasing start to the year with a knowledgeable and confident speaker who encourage us all to look more closely at our own patch.

Mike Read has visited us before and we have come to expect an exceptionally high quality of both presentation and photography. We were not disappointed by his talk this year 'The New Forest: a natural habitat'. There were magnificent pictures of birds. Among the raptors were Buzzard and Merlin, a Hobby nesting 70 foot high in a pine tree and a Tawny Owl in the snow. We also saw the nests of Curlew, Hawfinch, Dartford Warbler and Siskin. Mike made us think about the effect of so many visitors on this unique habitat. Members will also recall the superb pictures in which shafts of back lighting emphasised the beauty of the deer, ponies, flowers and insects and snakes as well as the birds.

Lawrence Holloway came in March to give his talk on Pagham Harbour. He began with a brief history of the area, using old maps to demonstrate its changing character. He took us through the year illustrating both the birds themselves and the effect of the seasons. Lawrence is an excellent speaker with a deep understanding and knowledge of the Harbour gained over many years of careful and meticulous observation and recording. His work will be immensely useful to anyone studying the area in the future. The audience of 52 much appreciated this lecture.

Dr ANR Peach stood in at short notice to speak after the AGM on the subject of Spain and Portugal. His photographs were taken with an old plate camera concealed in enormously tall hides. It was amazing to see the efforts which were being made in the 1960s and 1970s to take high quality photographs without the advantages of modern equipment. I particularly remember a Sardinian Warbler feeding a young cuckoo, the Great and Little Bustard, Black-shouldered Kite, and the Hoopoe with a snake in its nest! This was a gentle and informative talk from someone who did most of his photography over 30 years ago.

The summer meeting held at the Old Rectory, Coombes, on one of the rare good days in July was an occasion when every one could enjoy relaxed company as well as the delicious food provided by *Truffles* in ample quantity. This is a good event and more members should support it!

Roy Croucher came to us in October to talk about and illustrate the 'Wildlife of Northern France' Roy knows this region very well and is clearly able to locate

the more interesting birds. He gave tantalising account of superb days in the field and made us realise how close we are to Northern France and how good the birds are there. He certainly set people thinking about weekend trips there following in his footsteps.

Chris Bradshaw came to give us an introduction to the North Kent Marshes. He knows the marshes intimately and his enthusiasm for the variety of their birdlife was infectious. He was extremely informative about Sheppey and the seasonal migration through it as well as its range of winter visitors.

Tony Marr closed the year with his talk entitled the 'Agony and Ecstasy' in which he described some of the worst and best of his pelagic excursions. He has led many tours into the Atlantic from the West African coast, some in rather fragile and unprotected boats much rocked by the ocean, but rewarded with exciting bird sightings. He also spoke about the highly popular trips he has led to the Antarctic. The majority of the passengers, it seems were more interested in the birdwatchers than the birds, observing the bird-watching groups with tolerant amusement and wonder! So what's new?

There was a varied programme in 1998. I try hard to find good speakers and would like to know those you have particularly enjoyed. I should also welcome your suggestions about speakers for the future. It is not vital for every lecture to be exclusively about birds: a wide spectrum of Natural History often gives a more interesting meeting. **Please** let me know what you like!

Brianne Reeve

FIELD TRIPS 1998

On 18th January, ten SDOS members, led by Dave Smith, battled a strong westerly gale when walking from Itchenor around Chichester Harbour. Despite the conditions, one Slavonian Grebe, three Eiders, two Goldeneyes, one Little Grebe and six plus Red-breasted Mergansers gave most members a good start to their year's birdwatching. Also recorded were 300 Lapwings, 1000 Dark-bellied Brent Geese and a party of eleven Stock Doves. Later on, the group transferred to East Head and Snowhill Marsh where three Little Egrets, Teal, Wigeon, 20+ Snipe and 400+ Golden Plovers were enjoyed.

A larger than normal group of eighteen members, led by Peter Whitcomb, enjoyed a circular walk around the Lower Standean area near Ditchling Beacon on 28th February. It was a new area to walk for most members and although the cold and windy conditions reduced the numbers of birds seen, good views were obtained of most of the expected downland/farmland birds including a flushed Sparrowhawk. Notable also were Red-legged Partridge, Reed Bunting, Goldfinch, Stonechat, Yellowhammer, Fieldfare and Redwing and several Skylarks in song already. Two or three Brown Rats also seen feeding on maize husks.

A sunny start greeted fifteen members at the Warren, Storrington on 22nd March where Richard Ives led a morning's circuit of the sandstone ridge and wooded areas. Six Chiffchaffs were recorded and three Crossbills and two Siskins flashed over the tree-tops, but perhaps pride of place went to the excellent views of up to four Lesser Spotted Woodpeckers. Later on, a move up to Chantry Hill provided two Buzzards circling the scarp and this concluded a very successful morning.

John Newnham spearheaded the society's seawatch from the Goring Ilex tree shelter on 26th April. Less than ideal winds and weather brought little passing offshore save for seven Common Scoter, one Red-throated Diver, six Great Crested Grebes and four Gannets. A walk inland to relieve some of the quieter moments added Grey Partridge, Wheatear, Swallow, Linnet. Goldcrest, Chiffchaff and two Blackcaps to the list.

Many thanks to Chris Fox for once again introducing members to the Dawn Chorus around Wiston on May 2nd.

Only five members accompanied Sarah Patton on her own patch at Climping on 9th May. The very poor weather conditions contributed to the lack of birds recorded although Meadow Pipits were displaying and views of Fulmar, Sedge and Reed Warblers, Yellowhammer and Corn Bunting were all well appreciated. The small gathering were also treated to viewing the live specimens trapped the previous evening by Sarah in her moth trap which she kindly brought with her.

A good percentage of the society's membership gathered at Telegraph Hill in the New Forest on 31st May on a warm sunny day to be treated to the leader, Bernie Forbes, bedecked in shorts. Avian highlights consisted of at least four pairs of Woodlarks, good numbers of Dartford Warblers, Redstarts and Stonechats, three Wood Warblers singing, four Spotted Flycatchers, a flyover Hawfinch, four Siskins, twelve Buzzards and one Hobby and one Sparrowhawk. An Adder was seen by the majority of the group but the most memorable sight, so I'm told, for many an outing was the Leader's wife performing a backwards flip into the very wet Latchmere Brook! Full marks for saving the "bins". well done Carol!

Peter Friston took five members on an evening circular route south of the Stonehill car park, Ashdown Forest, on the 10th July. Good views of Linnet, Yellowhammer, Kestrel and Dartford Warbler were had. At 21.30 Woodcock was seen roding and a very close pair of Nightjars gave an outstanding performance around an obvious nest site; the male showing well his white marks on wing and tail. After watching them from a discreet distance for some while our return route to the car park was illuminated by a Glow-worm.

A group of sixteen were conducted around Farlington Marsh by the Reserve Warden, Bob Chapman on August 22nd. Good numbers of waders and raptors included Green Sandpiper, Whimbrel, Spotted Redshank, Marsh Harrier, Peregrine and an escaped Lanner Falcon!

A morning's search of the Birling Gap/Belle Tout area on 12th September

produced many migrants for the small group of six members led by Peter Whitcomb. Four chat and five warbler species together with a 200+ mixed Swallow and House Martin flock were all eclipsed by a close encounter with a Short-eared Owl which was flushed at short range. Watched by the group for at least ten minutes the owl gradually soared to a great height before returning to land in long grass only 200 yards away, when reasonable 'scope views were obtained. A Clouded Yellow butterfly was an additional bonus for the group.

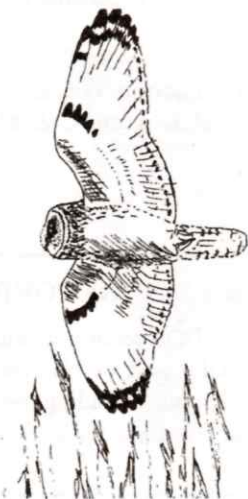
Twelve members joined me on 4th October for a tour around the Sidlesham West fields via the ferry. Sixty species were recorded on the day including many returning migrants; one Redstart, five Wheatears, two Whinchats and two Yellow Wagtails. Twelve Chiffchaffs were noted and a sizeable flock of at least 250 Linnets fed close to the shore. However, the highlight for many was again flushing a Short-eared Owl from a field adjacent to the beach. The second consecutive SDOS outing for this species.

Bernie Forbes accompanied twelve members on a circular walk around Harrow Hill on a dull overcast 22nd November. Unfortunately the variety of birds seen was not great, but a Peregrine sighting was most welcome. This was however a new area to walk for most members.

Stanley Allen led the traditional end of year local outing on the 27th Dec commencing at the Adur Fort but due to wet and very windy weather concluding at Widewater. Rock Pipit was recorded along the way together with Redshank, various gulls, Pochard, Red-breasted Merganser, Cormorant and a Shag. Stanley awarded full marks to all the brave fifteen members battling the elements to go on to the beach in a force eight gale to view the Turnstones.

At least 126 species were recorded on the above society outings.

Tony Fenton



GARDEN BIRD FEEDING SURVEY - WINTER 1998/9

The last year of the survey in its current form saw twelve members participating from Brighton, Hove, Southwick, Shoreham, Worthing, Ferring, Findon Valley, Storrington and Steyning.

It was overall a rather wet and windy winter with few cold spells – just a short one in mid December and again in February. Many members commented on the general lack of birds. Very few Redwings or Siskins (one garden only totalling just three birds) were recorded and no Fieldfares or Bramblings.

Chiffchaffs (six localities) and Blackcaps (four) appeared mostly only at the two ends of the period – they were apparently obtaining sufficient nourishment away from the urban areas, but at least one of the latter fed on provided food. Odd species included Grey Wagtail (two gardens), Tree Creeper (one), Kestrel (two) Rook (one) and Nuthatch (one). Just one Great Spotted and two Green Woodpeckers was disappointing after last year's totals. Sparrowhawks again appeared at four sites. Mistle Thrushes graced three sites and Song Thrushes were recorded at nine but only regularly at two of these.

In total, 39 species turned up in at least one garden with about 28 taking at least some provided food. The most were 30 at the Champion's in Brighton.

Maximum counts of individual species included up to 100 Starlings, 36 Feral Pigeons and 28 House Sparrows (Brighton), 40 Starlings and 30 House Sparrows (Shoreham and Southwick), eight Collared Doves (Southwick), six Carrion Crows (Hove), ten Goldfinches (Steyning), nine Chaffinches and five Jackdaws (Findon Valley), ten Blue Tits (Storrington) and 20 Black-headed Gulls (Ferring).

Regarding food taken, Blue Tits seem to be trying out seed and Dunnocks and a Blackcap peanuts!

Thanks to all taking part – the BTO scheme is in being and will be open to all to replace this one.

Participants were: S. Allen, E Chadwell, G Champion, J Cooper, C & P Hope, A & L Fenton, M & P Ford, H Jackson, C & M Leeves, R & A Sandison, P Walker, P Whitcomb,

Clive Hope

BOUNDARIES OF RECORDING AREA

The western boundary of the SDOS recording area is Ordnance Survey Easting 08 thus including Ferring Rife, part of Harrow Hill and Chantry Hill. The eastern boundary is Easting 35 thus including the entire Sheepcote Valley, part of East Brighton golf course and Bevendean Down. The northern boundary is Northing 15.

SDOS OFFICERS AS AT 1ST OCTOBER 1999

President	Mr S R Allen
Hon Secretary	Mrs B Reeve The Old Rectory, Coombes, Lancing, West Sussex BN15 0RS. Tel: 01273 452497
Hon Field Secretary	Mr A R Fenton 14 Rosemary Drive, Shoreham-by-Sea. Tel: 01273 591291
Hon Treasurer	Mr J M Maskell
Hon Recorder	Mr Peter Whitcomb (see page 6)
Hon Report Editor	Mrs P H Mulcock Pinehurst, West Drive, Angmering West Sussex BN16 4NL Tel: 01903 776251
Chairman of the Council	Mr B F Forbes
Sanctuary Committee	Dr J A Newnham Dr A B Watson
Other Council Members	Mrs P Ford Mr T Hicks

RECEIPTS AND PAYMENTS ACCOUNT **FOR THE YEAR TO 31 DECEMBER 1998**

	1998	1997
	£	£
RECEIPTS		
Balance brought forward	3,962.88	4032.49
Subscriptions and visitors fees	806.00	1210.50
Sale of books, and cards and stickers	37.50	5.50
Net raffle and refreshment receipts (including barbeque)	75.69	93.80
Bank interest	141.48	119.19
Video hire	8.00	-
	<u>5,031.55</u>	<u>5,461.48</u>

PAYMENTS		
Printing	249.99	283.28
Postage and stationery	144.22	145.54
Secretary's expenses	1.80	3.78
Hire of hall	140.00	134.00
Southern Water Authority	4.00	4.00
Speakers' fees	375.00	252.00
Sundries	33.10	19.00
Sanctuary expenses	-	165.00
RSPB - re Bird Race	-	492.00
Purchase of computer	120.00	-
Purchase of video tapes	33.95	-
SDOS bench renovations	50.00	-
Refund of subscription	50.00	-
Balance carried forward	3829.49	3962.88
	<u>5031.55</u>	<u>5461.48</u>

J M Maskell (Hon. Treasurer)

Dated 13 March 1999

ACCOUNTANTS' REPORT

In accordance with instructions given to us, we have prepared without carrying out an audit, the above receipts and payments account from the accounting records of Shoreham District Ornithological Society and from information and explanations supplied to us.

BDO STOY HAYWARD Chartered Accountants BRIGHTON

Date 15 March 1999

ABOUT SDOS

The Shoreham and District Ornithological Society, based in Shoreham by Sea, West Sussex, was founded in 1952 and is the oldest birdwatching society in Sussex. As well as covering Shoreham itself, the SDOS recording area extends to Brighton, Worthing, Steyning and Storrington, and the membership also includes a number of people who live outside the recording area.

We hold monthly indoor meetings from October to April at St Peter's Church Hall in Shoreham usually on the first Tuesday of the month. Non-members are welcome to attend on payment of a small fee.

We also arrange a programme of field outings throughout the year to birdwatching sites around the south east. Members receive two newsletters a year as well as this annual report.

New members are welcome. If you would like to join, please complete and send in the joining form below. Many back issues of this report are also still available from the Hon Secretary for purchase by members or non-members.

APPLICATION FOR MEMBERSHIP

I/we apply to join the Shoreham and District Ornithological Society and enclose my/our annual subscription of £8.50 single or £12 for a couple or family.

Cheques should be made payable to SDOS

Mr/Mrs/Miss/Ms

Names

Address.....

.....Post code.....

Tel no

Please send to Mrs B Reeve, The Old Rectory, Coombes,
Lancing, West Sussex BN15 0RS