

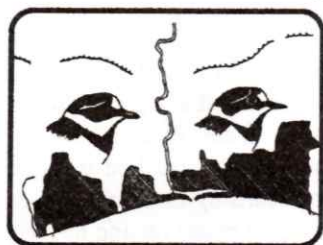
**Shoreham District
Ornithological
Society**

ANNUAL REPORT 1997



No 45

Price £3.00



Shoreham District Ornithological Society

ANNUAL REPORT 1997

CONTENTS	PAGE
Editorial	2
About SDOS	2
Notable Birds of the Area	3
Systematic List for 1997	7
Escapes and Ferals	48
Update of Rarity Records	48
Supplementary Records for 1996	49
Note for newer Birdwatchers	49
Arrival and Departure of Migrants	50
Ringing Report	51
Steyning Ringing Group Report	54
Sanctuary Report	56
Worthing Seawatching Report	58
Seawatching at Brighton Marina	60
Indoor Meetings	60
Field Outings	62
Garden Bird Feeding Survey 1997/8	64
Guide to Recording Birds in SDOS area	66
Detailed Species Guidelines	67
Know Your Area Better — Hollingbury Camp	69
Officers	71
Accounts	72

Thanks to Richard Ives for the illustrations in this Report including the front cover drawing of a Dotterel and the back cover drawing of a Barn Owl.

EDITORIAL

This is the third annual report which I have produced. I am sorry that it is finished a little later than last year, but I hope you will find that it is more crammed full of useful information than ever before. Our new Recorder, Peter Whitcomb, has included more records from the SOS database (kindly supplied by John Newnham) and has also produced a useful guide to recording birds in the area and a most interesting introduction to his local patch (see pages 66 and 69). He also rechecked nearly all his edited copy. But if you still find mistakes, it's not necessarily his fault! Errors could have mysteriously crept in at a later stage.

Peter would like to thank all those who submitted records and especially those who managed to send in the bulk of their records before the end of last year. We are both extremely grateful to Terry Hicks who scanned all Peter's text so that I would not have to re-type it all. We both hope that Peter will be fully computerised in good time for next year's report.

As in previous years, I would like to thank Richard Ives for his excellent illustrations and Brian Clay for arranging the final printing. My husband Chris has again scanned all the drawings and also been a fruitful source of ideas as to how the material might best be arranged. He has also spent much time checking text and tables. Finally, I would also like to thank all the other contributors especially those who supplied their text to me on floppy disk.

Pat Mulcock

ABOUT SDOS

The Shoreham and District Ornithological Society, based in Shoreham by Sea, West Sussex, was founded in 1952 and is the oldest birdwatching society in Sussex. As well as covering Shoreham itself, the SDOS recording area extends to Brighton, Worthing, Steyning and Storrington, and the membership also includes a number of people who live outside the recording area.

We hold monthly indoor meetings from October to April at St Peter's Church Hall in Shoreham usually on the first Tuesday of the month. Non-members are welcome to attend on payment of a small fee.

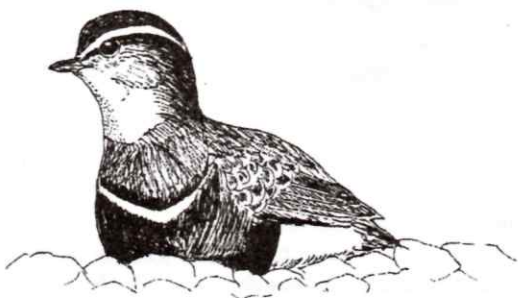
We also arrange a programme of field outings throughout the year to birdwatching sites around the south east. Members receive two newsletters a year as well as this annual report.

New members are welcome. For details of membership please write to the Hon Secretary, Mrs B Reeve, The Old Rectory, Coombes, Lancing, West Sussex BN15 0RS. Many back issues of this report are also still available for purchase by members or non-members.

NOTABLE BIRDS OF THE SHOREHAM AREA IN 1997

Yet another remarkable year started with freezing weather and lying snow bringing a wide variety of wildfowl and other interesting birds to the area. The area's first Smew records since 1991 were most welcome, and they were joined by large numbers of Goosander. The Adur Valley became a refuge and Scaup, Slavonian Grebe and Ruddy Duck were seen on the river. Nearby to the west of the Airfield a Marsh Harrier had chosen to roost, whilst cold weather brought 5 Whooper Swans and a pair of Twite to the valley. What could have been one of the most significant birds of the year was a glimpse of a small crane near Cuckoo Corner which frustratingly disappeared before notes could be taken. Cold weather birds also included a Black-necked Grebe at Worthing (4th), a Snow Bunting at the Marina (5th), a Bittern found dead there, a Red-necked Grebe off Hove and reports of Jack Snipe from at least five sites. Two notable counts were registered during the period with 300 Red-breasted Merganser off Hove (10th) and 60 Razorbill off Brighton (27th). Lastly for the month a Goshawk was reported over Brighton on 14th.

February was generally wet and windy and although some of the January birds lingered most had dispersed with the milder weather. An unconfirmed Ring-billed Gull was seen by a single observer at Southwick (9th) but otherwise normality returned with a scattering of coastal records. These included Red-necked Grebe and Great Northern Diver from the Marina, and a 2nd winter Glaucous Gull which ranged between Shoreham Fort to the west of Widewater (22-23rd). Inland, winter thrushes were scarce with very few flocks reported



The first Wheatear was at Steyning Round Hill on March 3, heralding the start of spring migration, and with it, a generally sunny, dry and mild month. Marina seawatching produced 2 early Whimbrel (11th), a very early Manx Shearwater (14th), 1300+ Brent Geese (11th) and a flock of 18 Avocet (17th). The first Sand Martins were on 23rd but there were no March Swallows.

Dry and mild conditions continued into April, but just when the incoming migrants were arriving it became cooler with NE winds. On the 2nd a pair of Ring Ouzels stayed all day on Hollingbury Camp and a Glaucous Gull was briefly at Worthing Beach (6th). The next day a Serin was a fly-over at the Marina, where the Fulmar count was 225E. The first of many Dotterel was found at underwatched Wolstonbury Hill (15th) followed by a long-staying Red-necked

Grebe at Marina (22-25th), and Garganey and the first Pomarine Skua past the Marina (23rd). On the same day 2 more Dotterel were found at Beeding Hill, increasing to 5 on 26-27th. The first Hobby was noted at Goring (20th) and Wood Warbler at Brighton (23rd). Wet and showery weather finished the month.

The peak month of May began with warm SE winds but by the second week colder conditions occurred for a while, though warming up towards the month end. On the 1st a probable Raven flew high over Sheepcote and a White Stork was seen independently at Woodingdean, Lancing and Worthing. The next day probably over 70 Pomarine Skuas passed along the coastline but no observer stayed long enough through the day to log them all. Seawatches produced a

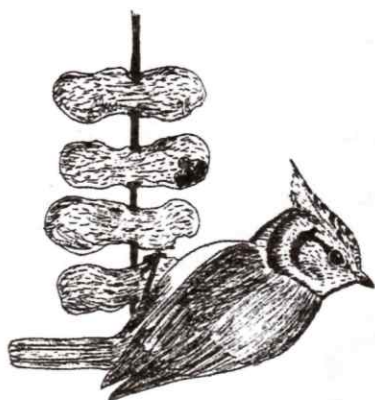
- Garganey off Worthing, Manx Shearwaters on 2 dates and a late returning Long-tailed Duck. Passage of Little Gull and Black Tern was disappointing. Inland, a Red-rumped Swallow was reported from Upper Beeding (6th) and a remarkable record of a Crested Tit in a Worthing garden (10th) has been accepted by the rarities committee. The trio of one-observer's sightings was completed with an Alpine Swift at Worthing (14th). A new flock of Dotterel were located at Beeding Hill, 2 Red Kites were noted, one from Cissbury

(17th) and another near Patching (30th). The month ended with a Nightjar coming in off the sea at the Marina (26th) and a female Red-backed Shrike at Sheepcote Valley (31st).

Inclement weather spoiled June for birdwatching, but the rain was much needed to avert another drought. The first Crossbills of the area were 18E over the Sanctuary (5th) a precursor for many flocks which moved through later. The only other notable birds were a Mediterranean Shearwater off the Marina (20th) and Quail from Steyning (23rd), Cissbury (28th) and Lancing Clump (29th)

July started with somewhat cooler conditions, but gradually warmed up to long periods of hot and sunny weather. It was a time for the birder to switch attention away from the coast. Quails were heard at another 3 sites and by now the Crossbill influx had stepped up with 10 over Brighton (10th) and 18 over Cissbury (12th). An Osprey flew over West Worthing on 26th.

Sunny weather predominated in August, but produced wet and blustery conditions for the Bank Holiday weekend. A Curlew Sandpiper was a Widewater (6th) and yet another Quail was heard at Sheepcote Valley (8th), but the pick of the month's birds were raptors. The downland produced Montagu's Harriers, first



from Storrington (9th) and then from Harrow Hill (14th and 18th); and Red Kites graced the area around Harrow Hill (12th) and at Cissbury (22nd). Another Curlew Sandpiper joined the Dunlin on the Adur (25th) and a good seawatch in strong winds from the Marina (30th) produced a Sooty and 2 Mediterranean Shearwaters for the persistent, and lucky, observer

Conditions changed back to dry and warm again in September but the winds starting mainly from the West, changed to East mid month. A flock of up to 9 Dotterel at Steyning Round Hill stayed to 4th, with observers also turning up a Montagu's Harrier (2nd), a Short-eared Owl (4th) and an Osprey (5th)! The same area produced Quail and good numbers of Wheatear and Whinchat. Back nearer the coast, scarcer waders were represented by up to 3 Curlew Sandpipers on Adur Saltings (9-11th) and a juvenile Sabine's Gull was recorded off the Marina (12th). This autumn will be remembered for the Siskin passage - flocks just seemed to be everywhere! Representative of the large counts were a huge 1000+ at Sheepcote Valley (19th) and 400 passing through Widewater (21st). The month more or less fizzled out with no real rarities turning up.

The first week of October was unseasonally mild, producing the highlight of the year for the ringers at Cissbury with a Yellow-browed Warbler (3rd). The Atlantic low pressure changed the conditions and SW winds began to predominate. A Sooty Shearwater was logged at both Brighton and Hove (8th). A number of late terns were recorded with 3 Sandwich Terns at Shoreham (11th) and a mixture of Common and Arctic in rougher weather (14-15th). A mid-morning thrush movement on 12th seemed widespread and those that spotted the passage in time recorded 5000+ in

4hrs at Hove, 700+ in only an hour at Brighton, and 2500 at Worthing. The winds changed to east from 17th, then north at the month end. A Grey Phalarope went east at the Marina (18th) and a Woodlark flew over Wildpark (23rd) were of note. Another large movement on 22nd, this time saw an influx of Woodpigeons with 1000+ at the Marina and 1850E

from Worthing. The month end produced a female Velvet Scoter which stayed a few days off the Marina, an extremely late Redstart at Cissbury (28th), a Goshawk over Wildpark (29th) and a flock of 7 White-fronted Geese SW over Sheepcote Valley (29th).

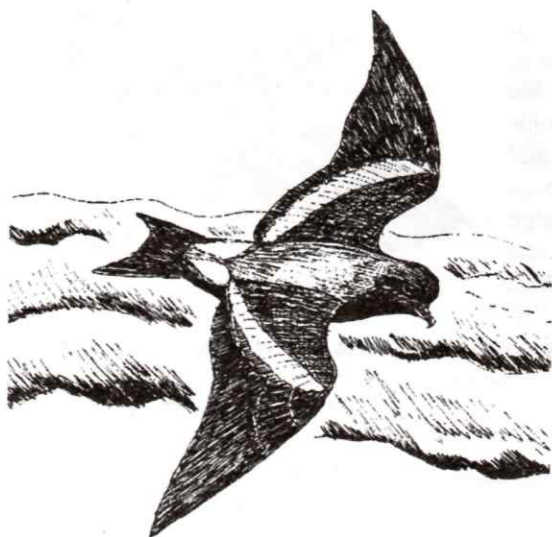
The first half of November was mostly unsettled with SW winds. Early month produced a passing Snow Bunting at Goring Beach (1st) and 2 Shore Larks came in off the sea at the Marina (4th). A number of late Swallows were noted along



the coast, and an unusually late Swift was seen at Widewater (6th). There was frost and fog during the second week, and some rain, but the temperatures throughout were above average. A Little Egret was on the Adur (12th). Then the Brighton area became the hot-spot with local patch watchers finding a string of rare warblers. The first was a Pallas's Warbler at Sheepcote(15-17th) and two birds were present on 23rd with another being found at nearby Whitehawk Hill. A Hume's Yellow-browed Warbler in East Brighton Park on the 16th was a new bird for the SDOS area and remained until the 22nd, followed by a nominate Yellow-browed around Sheepcote campsite (24-29th). During this exciting period a 1st winter Iceland Gull was located at Southwick (16th), the area's first Leach's Petrel since September 1992 visited the Harbour (19th), and a late Ring Ouzel was at Sheepcote (24th).

In December strong belts of rain with SW winds predominated and conditions remained milder than average. A 1st winter Ring-billed Gull was found in the gull roost at Southwick (6th) and returned on other dates but was extremely elusive. There was a brief spell of cold East winds mid month and some snow on 17th, bringing in a Great Northern Diver for a few days stay at Brighton Marina. Stronger winds and gales during the Christmas period meant very few birders saw the 3 Velvet Scoters at the Marina (20th), and 2 Sooty Shearwater off Worthing (24th) or the 2 Great Skuas (25th). A beach stranded Arctic Skua and Little Gull were seen between Brighton and Shoreham (30th) but surprisingly little else. A few Bewick's Swans returned to the Adur Valley as did a flock of 49 Grey Lag Geese, the area's highest ever count.

Peter Whitcomb



SYSTEMATIC LIST FOR 1997

This systematic list of birds in the Shoreham District is based upon records submitted by the following (non members are marked*):-

SR Allen, V Bentley, PM Brayshaw, D Buckingham, GL & M Champion, R Emery*, AR Fenton, BF Forbes, P&M Ford, Friends of Bevedean Down, KB Gillam*, C Hope, RA Ives, H Jackson, LR Keen, DH Labdon, JN & SP Maskell, B Metcalfe, C&P Mulcock, JA Newnham, K Noble, C Piper, B Reeve, RJ Sandison, R Simpson, DI Smith, JC & JM Steedman, Steyning Ringing Group, AB Watson, A Wende, R Westwater, AD Whitcomb*, IJ Whitcomb*, PJ Whitcomb, K Whiteman*

The recorder also thanks John Newnham for supplying additional records from the SOS database with relevant records from C Brooks, RJ Fairbank, JC Holt, AR Kitson, CW Melgar and others.

Abbreviations: ad = adult, BBRC = British Birds Rarities Committee, CW = cement works, f = female, GC = golf course, ha = hectare, imm = immature, km = kilometre, juv = juvenile, m = male, (m.o.) = many observers pr = pair, SOS = Sussex Ornithological Society, sp = summer plumage, wp = winter plumage, W=West etc, yr = year. the Marina = Brighton Marina, the Airfield = Shoreham Airfield, the Fort = Shoreham Fort, the Harbour = Shoreham Harbour, the Canal = Southwick Canal, the Sanctuary = Shoreham Sanctuary.

References to **Worthing** in seawatching data include all seawatch sites unless separately identified. '**Adur**' refers to the river and associated mudflats between the footbridge and Shoreham Flyover. '**Wildpark**' includes the whole of the Local Nature Reserve namely, Hollingbury Camp, Woods, Golf Course and Moulsecomb Wildpark.

0002 **RED-THROATED DIVER** *Gavia stellata*

Regular passage migrant and winter visitor

Cold weather brought in birds to Goring on Jan 1, then 4 were in the Harbour on the 2nd. An individual stayed around the Adur (Jan 3-7). Also in Jan were 14W/6E Worthing (5th), 3 off Southwick (7th), a single off Widewater (25th), and 6 off the Marina (29th). Unusually one found its way up-river to Steyning on Jan 11. One found dead at the Marina (Jan 13) was ringed as a nestling in July 1990 in Stockholm.

Monthly seawatching totals were as follows:

	Jan	Feb	Mar	Apr	May	Oct	Nov	Dec
Brighton	78	30	10	21	9	2	1	88
Worthing	20	3	3	11	3	-	1	-

Marina max were 4W/14E (Jan 2), 1W/15E (Jan 13), 6W/8E (Dec 22) and 9W/8E (Dec 23). Elsewhere, 1W at Worthing on Nov 11 was the only other late year record.

0003 **BLACK-THROATED DIVER** *Gavia arctica*

Fairly scarce passage migrant

Singles noted E from Southwick on two dates in Jan and a max of 5E on the 30th from the Marina amongst a month total of 12. Spring seawatch totals from the Marina were Feb - 8, Mar - 2, Apr - 15 and May - 5. A single was in the Harbour on Nov 2, and a total of 7 in the Marina for Dec.

0004 **GREAT NORTHERN DIVER** *Gavia immer*

Rare visitor, 1-2 most years

One noted at the Marina on Feb 17 (IJW) and 1E at Worthing on Mar 25 (PMB). One lingered in and around the Marina from Dec 16-19 (IJW).

DIVER Species

Unidentified divers were recorded as follows:

	Jan	Feb	Mar	Apr	May		Oct	Nov	Dec
Brighton	11	26	15	32	10		-	2	46
Worthing	16	-	2	21	2		-	6	4

Max counts included 20E at the Marina on Feb 9 and 16W at Worthing on Jan 5. A late year count was 10W/19E off the Marina on Dec 22.

0007 **LITTLE GREBE** *Tachybaptus ruficollis*

Mainly winter visitor, occasional breeder

Good numbers occurred through the area during Jan with up to 10 on the Adur around the tollbridge (10th), and a total of 25 for the stretch of the Adur up to Steyning (6th). Varying numbers on the Canal peaked at 5 (Jan 25). Numbers dwindled in early Feb with 4 at Cuckoo Corner (2nd), a single on two dates at New Salts Farm, and finally 4 in Marina (Mar 2). In the autumn numbers at Brooklands increased from 3 (Aug 31) to 7 (Sept 26), and 3-5 during Oct/Nov. There were also 10 on the Adur at Wyckham Farm (Oct 29), 3 on the Adur at the Cement Works (Nov 3), a single resident on Ferring Rife (Nov/Dec), one at Chantry Lane Pond (Dec 26) and up to 2 in the Marina in Dec.

0009 **GREAT CRESTED GREBE** *Podiceps cristatus*

Regular offshore for most of year

Congregations on the sea peaked at 20 off Shoreham (Jan 7) and 30 off the Marina (Jan 27), and there were up to 10 in the Harbour (Jan 4). Noted on seawatches from Brighton and Worthing in insignificant numbers Mar - May, peaking at 8 from Worthing (May 17). Late year records were 10 off Southwick (Dec 21), 4W at the Marina (Dec 27), and a single on the Adur (Dec 30).

0010 **RED-NECKED GREBE** *Podiceps grisegena*

Rare winter visitor and passage migrant

A good number were reported: singles off Shoreham (Jan 10), Southwick (Jan 17), Marina (Feb 4 and Feb 7-9), and a sp bird on Apr 22-25. One off Worthing (Apr 7) then at the Marina: 1W in gales (Aug 27), 1 (Oct 29) and 1E (Nov 8).

0011 **SLAVONIAN GREBE** *Podiceps auritus*

Regular winter visitor offshore

One remained in the Harbour area (Jan 2 - Mar 3), occasionally straying up river to Cuckoo Corner. The bulk of the other records were from the Marina with 2 (Jan 2), 1E (Jan 4/5), 1 inside Marina (Jan 13), 2 (Jan 29). There was 1 off Hove (Jan 10), then 1W Marina (Feb 13), 1 (Feb 14), 1 on sea (Feb 16), 1W (Feb 17), 1 Hove Lagoon (Feb 19) and 1 on the Canal (Feb 18-22). In Mar one on Brooklands (3rd), Canal (5th), Marina

(17th), 1E (25th) and 3 off Lancing (22nd). A summer plumage bird remained off the Marina (Apr 22-24) where also 1E (Apr 9) and 1E (May 22). Late year sightings at the Marina were 1 (Oct 29-30), 1E (Dec 2) and lastly 1 (Dec 15).

0012 **BLACK-NECKED GREBE** *Podiceps nigricollis*

Rare winter visitor

Two accepted records were 1 off Worthing on Jan 4 (RAI) an adult E at the Marina on Apr 23 (IJW). There was also a report of 1 on the Adur on Jan 9.

0020 **FULMAR** *Fulmaris glacialis*

Common passage migrant, nests just outside area

Seawatching totals were as follows:

	Jan	Feb	Mar	Apr	May	Jun	Jul	Aug	Sep	Oct	Nov	Dec
Brighton	2	16	97	606	408	-	5	5	10			51
Worthing	-	3	2	17	91	3	-	5	2			-

Peak counts from Marina were 225E (Apr 7), 80E (Apr 13), 90E (May 11), and 99E/3W (May 15). A pair bred on cliffs very close to the Marina with one chick noted. Notably, blue phase birds were seen with 1E at Marina on May 5 (IJW) and one six miles SW of Brighton from a boat on July 24 (NJT). Small numbers were seen in summer from Goring, Worthing and the Marina. Rough weather in Dec accounted for a month total of 51 from the Marina, including 10E/10W on the 7th. There was one inland record of 1W at New Salts Farm on Apr 4 (KN).

0043 **SOOTY SHEARWATER** *Puffinus griseus*

Rare autumn visitor

1W off the Marina on Aug 8 (IJW) and 2E off Worthing on Dec 24 (RAI) have both been accepted by SOS. The first records since Sept 1988. A further record off the Marina and Hove on Oct 8 is still under consideration.

0046 **MEDITERRANEAN SHEARWATER** *Puffinus yelkouan*

Rare autumn visitor

1W off the Marina on June 20 (KBG) and 2 off the Marina on Aug 30 (IJW) were accepted by SOS.

0046 **MANX SHEARWATER** *Puffinus puffinus*

Fairly uncommon passage migrant

1E off Marina on Mar 14 will equal the earliest record in Sussex if accepted by SOS. In May there were 3E at Worthing (RAI) and 9E at Marina on 4th (IJW) and 2E at Goring on 10th (RAI).

0055 **LEACH'S STORM PETREL** *Oceanodroma leucorhoa*

Rare vagrant

One at the Harbour on Nov 19 (RAI) has been accepted by SOS. The first record for the area since Sept 1992.

0071 **GANNET** *Sula bassana*

Regular offshore in most months, usually peaking in spring

Recorded in all months except Feb, the monthly totals from principal sites were:

	Jan	Feb	Mar	Apr	May	Jun	Jul	Aug	Sep	Oct	Nov	Dec
Brighton	8	-	7	249	555	44	5	172	420	50	12	75
Worthing	-	-	7	45	211	41	24	54	31	142	7	5

The peak day was May 10 with 191W at Widewater, 174W at Worthing and 43W at Marina logged. The latter site had peaks of 102E/12W (May 5), 83E/13W (May 11), 80W (Aug 30), 115W (Sept 1) and 180W (Sept 12). There were also 40 feeding off Brighton (Sept 28) and 30 off Shoreham (Oct 5).

0072 **CORMORANT** *Phalacrocorax carbo*

Common at coastal and some inland sites

Early year records included 30N Adur Valley on Jan 5 and noted regularly from Ferring Rife. Inland counts were a single at Woods Mill (Mar 4) and 2 on Durrington Pond (Mar 7). Seawatches from Worthing and Marina produced mainly insignificant numbers, with max 12 off Worthing (Apr 2). The max roost counts at Wyckham pylons were July - 58, Aug - 101, Sept - 93, Oct - 156, Nov - 80 and Dec - 81. Max roost count off Brooklands was 37 (Oct 14). Other late year counts were 16 off Southwick (Nov 22) and 10 off Worthing (Dec 14).

0080 **SHAG** *Phalacrocorax aristotelis*

Fairly uncommon winter visitor

Early year counts at Marina were a single during Jan, but 3-6 resident Feb - Apr. There were 1-2 regularly off Southwick Jan/Feb and a single in the Harbour on five dates in Feb. Monthly seawatching totals from the Marina were as follows:

	Jan	Feb	Mar	Apr	May	Aug	Nov	Dec
Brighton	4	1	4	8	6	16	1	1

There was also 1E at Worthing on Mar 24. A flock of 15W at the Marina on Aug 13 was exceptional. One/two were regular at the Marina to year end, with 3 on Nov 8 and probably 4 birds were involved. Also one was off Southwick on Nov 27.



0095 **BITTERN** *Botaurus stellaris*

Very rare winter visitor

One found dead inside the Marina by an angler on Jan 6 (via ADW).

0119 **LITTLE EGRET** *Egretta garzetta*

Once a rare vagrant, now annual in area

A rather poor year with singles recorded at New Salts Farm (Jan 2), at Ferring Rife (Jan 19 and 26), off Worthing (May 3), at the Sanctuary (May 13), over Broadwater (July 9) and on the Adur (Nov 12).

0122 **GREY HERON** *Ardea cinerea*

Fairly common resident

Reported regularly from only 2 sites through the year: - up to 4 at Ferring Rife and max 12 at New Salts Farm on Oct 22. The Wyckham Wood heronry had 24 nests, the same as for 1996. There was a surprising number noted on seawatches from the Marina with a dozen from Mar - Oct, and 2W at Worthing on Oct 20.

0134 **WHITE STORK** *Ciconia ciconia*

Rare vagrant

Three sightings on May 1: at Woodingdean [just outside area] (11 am), Worthing (12.30 pm) and Lancing (1 pm). Still being considered by SOS.

0152 **MUTE SWAN** *Cygnus olor*

Fairly common resident

In Jan there were 4 on the Canal (4th), 11 at Cuckoo Corner (4th) and 9 at the Marina (16th and 27th), 4 at Ferring Rife (29th), and 2W off Worthing (26th). The only breeding record received was 1 pr at Brooklands raising 3 cygnets. In March there were 14 at Widewater (5th), 24 on Henfield Levels (14th) and 1E at the Marina (17th). A herd of 24 were on the lower Adur (May 5). In the autumn numbers built up at Brooklands with 21 (Sept 10) growing to max 46 (Nov 8), whilst 20+ were on Widewater in Sept peaking at 26 on 26th. Seawatching at Worthing produced 8W (Sept 2) and 7E (Oct 22). Four birds were resident inside the Marina Nov - Dec.

0153 **BEWICK'S SWAN** *Cygnus columbianus*

Scarce but regular winter visitor

Early year counts were 9 at Steyning Levels on Jan 3, with 20E there on the 20th. At Henfield Levels numbers fluctuated with max 26 (Jan 11) but reducing to 3 for most of Feb. Late year records involved a herd on Henfield Levels from Nov 10 peaking at 11 (Dec 31). There were 22 on the Adur at Shoreham (Dec 20).

0154 **WHOOPEE SWAN** *Cygnus cygnus*

Rare winter visitor

Five adults below the Tollbridge (Jan 1). They first flew in across the Airfield, stopped briefly on the river, and flew N at dusk (RS, IJW). Accepted by SOS

0159 **WHITE-FRONTED GOOSE** *Anser brachyrhynchus*

Rare winter visitor

The only acceptable record was 75W on Oct 29 at Sheepcote Valley (IJW). 3W off Palace Pier on Feb 7 were considered to be of this species.

0161 **GREYLAG GOOSE** *Anser anser*

Fairly scarce introduced resident

In March there were 14 on Henfield Levels (8th) and 3 on Wiston Pond (8th), the latter site later producing 3 goslings from each of 2 prs. There were 2W at the Marina (Apr 4). Good numbers occurred late year from Henfield Levels peaking at 49 (Dec 22), which is believed to be the highest count for the SDOS area.

0166 **CANADA GOOSE** *Branta canadensis*

Introduced, increasing in area, now breeding

Early year records were 24 at Henfield Levels (Jan 11) and 2 at Ferring Rife (Apr 4). Noted on seawatches from the Marina with 10E on 2 dates in Mar, 4E/2W on 3 dates in Apr, and 2E/2W at Worthing (Apr 9). Two pairs bred on Beeding Brooks and 1 pr on Henfield Levels raised 9 young. Late year records revolved around Henfield Levels with 80 (Sept 20), increasing to max 170 (Nov 20). There were 9NW over Worthing (Oct 12).

0168 **BRENT GOOSE** *Branta bernicla*

Common passage migrant and occasional winter visitor

The cold January weather brought a number to the area, the main flock concentrating on the Airfield, Adur and Cuckoo Corner area with varying counts from 85 to 160, dispersing on or around Feb 5. Smaller flocks included up to 29 at New Salts Farm (Jan 14), 40 at Ferring Rife (Jan 11) and 54 near Coombes (Jan 19). A pale-bellied bird was present in the main flock up to Jan 6 and another flew with dark-bellied off the Marina (Feb 23). The seawatching totals were as follows:

	Jan	Feb	Mar	Apr	May		Sep	Oct	Nov	Dec
Brighton	197	154	2483	134	123		2	27	14	99
Worthing	43	91	247	128	106		10	296	131	28

The Jan total included 170W off the Marina (Jan 1), and other peak counts were 1384E (Mar 11), 235E (Mar 14) from the Marina, and 166W (Oct 16) from Worthing. Other records were 1 swimming E at Goring Gap (July 5), 2 imm feeding on grass at Shoreham Beach (Oct 31) staying 1 week, and 1 imm staying at Widewater from Oct 22 to year end.

0173 **SHELDUCK** *Tadorna tadorna*

Fairly common passage migrant and winter visitor

Notable movements occurred during the cold spell with 45W at the Marina (Jan 1) and 44W at Worthing (Jan 5). There were 20 on riverbank nr Cement Works (Jan 10), 1-3 at Widewater (Jan to Feb), and max 16 on Adur Saltings (Feb 3). Monthly seawatching totals were:

	Jan	Feb	Mar	Apr	May	Jun	Jul	Aug	Sep	Oct	Nov	Dec
Brighton	120	20	60	38	65	-	-	-	7	-	-	38
Worthing	68	4	12	45	9	-	2	-	-	13	-	7

Pairs were noted during the breeding season from New Salts Farm and Henfield Levels. There were no late year counts.

0179 **WIGEON** *Anas penelope*

Fairly common winter visitor and passage migrant

With flocks moving around in the cold spell it was difficult to assess the total number, but it probably exceeded 500. Some overlap is likely, but high counts were 80 at New Salts Farm (Jan 11), 150 at Cuckoo Corner (Jan 4), 160 on the Airfield (Jan 5), 120 on the Adur by Cement Works (Jan 7) and 200 on King's Barn Levels (Jan 11). Additional records: 70 on the sea off Widewater (Jan 1) and 30 in the Harbour both flew inland, and 100W/50E

at Marina (Jan 1) and 60W off Hove (Jan 3). Small numbers occurred on spring seawatches, and late year counts included 30E at Marina (Dec 18) and 35W at Worthing (Dec 27). There were also 70 on the sea off Shoreham (Dec 17) but no inland reports.

0180 **AMERICAN WIGEON** *Anas americana*

Very rare vagrant

An unconfirmed sighting on Henfield Levels on Feb 5 may have been Chiloe Wigeon (see Escapes). Only acceptable Sussex record was at Pagham Harbour just prior to this date.

0182 **GADWALL** *Anas strepera*

Uncommon in the area

A pair on the Adur at Shoreham (Jan 1) was also noted at Cuckoo Corner. There were 4 the next day at New Salts Farm and 3 on Widewater. At least one stayed around the Adur, and up to 3 at New Salts Farm into Feb. On seawatches a single E on Apr 23 was logged at the Marina and Worthing. A male resided at Widewater from May 6-13 and another was noted there on Sept 12. Lastly there was one at New Salts Farm (Oct 22).

0184 **TEAL** *Anas crecca*

Fairly common passage migrant and winter visitor

In the Jan cold spell small flocks were noted with 10 on the Adur (1st) increasing to 19 (14th) and 4 at New Salts Farm (25th). A larger flock of 50 at King's Barn Levels stayed during Jan. Marina seawatch totals were: Mar - 22 and Apr - 172, with max 132E (Apr 21). There was an Apr total of 19 at Worthing. Autumn records were: 5E Marina (Sept 28) and 2E (Oct 28), then one on the Adur (Oct 27) and 3 at Steyning Levels (Oct 29).

0186 **MALLARD** *Anas platyrhynchos*

Common resident and winter visitor

Early year records were from Widewater with 30 (Jan 5) and 22 (Feb 22), 20 on Henfield Levels (Jan 11) and 4 off Worthing (Jan 4). Small numbers were present in spring at Ferring Rife but the only confirmed breeding was 1 pr raising 6 young at the Sanctuary. Noted on seawatches in two's during Mar - May at the Marina with also 3W at the Marina (Sept 12) and 5 off Worthing (Oct 16). Late year counts: 55 at New Salts Farm (Oct 22) and 14 at Widewater (Dec 1).

0189 **PINTAIL** *Anas acuta*

Regular winter visitor at coastal and inland sites

Strangely not recorded in Jan, but 26E at the Marina (Feb 5) and 130 on Henfield Levels (Feb 22). Spring seawatches produced 15E at Marina (Mar 9) and 8E at Worthing was the Apr total. The only late year records were 1W at the Marina (Nov 15) and 20 on Adur Levels (Dec 12).

0191 **GARGANEY** *Anas querquedula*

Scarce passage migrant

Only records were 1E off the Marina (Apr 23) and 1E off Worthing (May 4).

0194 **SHOVELER** *Anas clypeata***Regular winter visitor**

Early year records were 9 on Steyning Levels (Jan 1), 10E over the Harbour (Jan 5), 20 on Henfield Levels (Feb 22) and small parties at New Salts Farm and Wiston Pond. Very few noted on seawatches with just 11 passing Worthing and 14 passing the Marina during Mar/Apr. On Henfield Levels 1 pair noted (Nov 10) and 4 (Dec 31).

0198 **POCHARD** *Aythya ferina***Regular winter visitor in small numbers**

The monthly maxima were as follows:

	Jan	Feb	Mar		Oct	Nov	Dec	Other records were 23 on the Canal (Jan 4), increasing to 51 (10th). Early year seawatching produced 13W (Jan 5), 15E (Jan 26)
Brooklands	10	-	-		8	21	-	
Widewater	84	89	-		-	15	51	

from Worthing, and 32E/15W (Jan 2) from the Marina. The Marina also logged 6E (Feb 9) and 1E (May 13).

0203 **TUFTED DUCK** *Aythya fuligula***Declining winter visitor**

The monthly counts were as follows:

	Jan	Feb	Mar		Sep	Oct	Nov	Dec	The cold weather brought 16 inside the Marina on Jan 4, max 75 at Cuckoo Corner on Jan 7, and 49 on
Brooklands	117	11	-		10	25	28	3	
Widewater	-	13	-		-	-	-	-	

the Canal on Jan 10. A total of 155 flew past the Marina in Jan with max 44E on the 30th. Two pairs bred on Steyning Levels. Late year records were 1W at the Marina on Dec 19, and 5 on Chantry Lane pond on Dec 26.

0204 **SCAUP** *Aythya marila***Scarce winter visitor**

First noted on Jan 1 with 1E at the Marina and 3 on the Canal. The next day 4E passed the Marina, and the Canal birds increased to 4 with an imm drake and 3 females. Another 3 were in the Harbour on the 4th, and maybe the same group of 4 were at Cuckoo Corner on Jan 10-11. A male took up residence inside the Marina from Jan 9-31 (at least) whilst a further 2 were at Brooklands on Jan 19. The same day there were 4 at Cuckoo Corner. The only late year record was a female at the Harbour entrance on Oct 13.

0206 **EIDER** *Somateria mollissima***Regular and passage migrant and winter visitor**

Monthly seawatching totals were as follows:

	Jan	Feb	Mar	Apr	May	Jun		Aug	Sep	Oct	Nov	Dec
Brighton	14	31	36	31	-	1		1	-	12	4	3
Worthing	-	-	15	13	7	-		-	-	5	9	4

Max counts from the Marina were 18E (Feb 23), 15E (Mar 22) and 15E (Apr 24). Birds lingering on the sea included 3 at the Harbour entrance (Jan 2), 1 off Southwick (Jan 1), 5 off Widewater (Mar 22) and a female in the Harbour (Apr 30). There was a female off the Marina from Sept 27 - Oct 12, and up to 7 during Oct/Nov. Also 17 off Southwick (Dec 5) and 7 on sea off Widewater (Dec 28).

0212 LONG-TAILED DUCK *Clangula hyemalis*

Rare winter visitor

The only records were 1E on Apr 8 noted at Worthing (PMB) and the Marina (LJW), and a male off Widewater on May 23 (SRA).

0213 COMMON SCOTER *Melanitta nigra*

Common passage migrant

There were 6 on the Canal on Jan 3 and seawatching totals were as follows:

	Jan	Feb	Mar	Apr	May	Jun	Jul	Aug	Sep	Oct	Nov	Dec
Brighton	39	2	221	2389	940	29	6	-	67	21	9	23
Worthing	4	-	37	665	245	4	-	2	12	-	-	2

The max counts at the Marina were 1,166 (Apr 9), 237E (Apr 23) and 204E (May 3). There were 2W at Goring (July 7). In Oct there were 5 off the Marina (29th) and 8 off Southwick (30th).

0215 VELVET SCOTER *Melanitta fusca*

Fairly regular passage migrant

All records were as follows: 1E at the Marina (Jan 2), 2E off Southwick (Jan 10), 4 off Shoreham (Feb 22; 1E (Apr 21), a female (Oct 29 - Nov 1), 1 (Nov 22), and 3E (Dec 20) all off the Marina; and a male off Southwick (Dec 26).

18 GOLDENEYE *Bucephala clangula*

Regular winter visitor in small numbers

The year started with 3 on the Canal and 2 on the Adur, then a group of up to 7 remained on the Adur to Cuckoo Corner to Jan 14, reducing to 3 in Feb, and 1 on Mar 6. Other birds were noted with 3 - 4 on the Adur at Upper Beeding on Jan 8-11 and one on Wiston Pond on Jan 25. Offshore there were: 1W at the Marina (Jan 2) and 1E/3W there next day, 2 off Goring (Jan 4), and 3E off the Marina (Jan 13). There were no late year records.

0220 SMEW *Mergus albellus*

Rare winter visitor

Two red-heads were at the Harbour and by the Flyover on Jan 1. Probably 2 additional birds were on the Adur at Steyning the same day. Numbers fluctuated with 3-4 at Cuckoo Corner (Jan 4-19); 1-2 on the Canal (Jan 10-25); and max 3m/5f on the Adur at Steyning (Jan 11). Other sightings from the Marina (Jan 3) and a male E there (Apr 8). The first records since Feb '91 and most welcome.

0221 **RED-BREASTED MERGANSER** *Mergus serrator*

Common winter visitor

Offshore totals from Goring were 20 on Jan 1 and Mar 23. A huge flock of 310 were counted off Hove on Jan 10 which is believed to be the highest count in Sussex at a single site. The flock remained at 80 off Southwick on Feb 21 reducing to 30 on 26th. There were also 13 off Shoreham on Mar 1 and up to 35 off Worthing for most of March. A group resided on the Canal from Feb 19-25 peaking at 24, whilst smaller flocks were noted at Brooklands and Widewater.

Seawatching totals were as follows:

	Jan	Feb	Mar	Apr	May	Jun	Oct	Nov	Dec
Brighton	18	17	28	83	18	-	-	2	39
Worthing	-	-	48	97	5	1	2	34	54

Max counts from Worthing were 26E (Mar 25) and 33E (Apr 8). There were few late year records with 54 off Worthing on Dec 14 the only notable count.

0223 **GOOSANDER** *Mergus merganser*

Rare winter visitor

With over 40 records submitted for Jan it was likely there were in excess of 50 in the area. The highest count was 38 (28f/10m) on Jan 5 on the Adur between Shoreham and Stretham Manor. Other counts included 35 (18f/17m) near Beeding CW on Jan 11 and 24 (17f/7m) near Upper Beeding on Jan 6. Earlier, small numbers were noted on Jan 1 from the Marina and the Harbour, with 7 on the Adur near Steyning next day. There were 6 males W off Southwick on Jan 3, the same day seeing numbers start to swell with 20 (14f/6m) on the Adur (near Beeding CW). Over 16 were noted offshore from Goring, Southwick and Widewater and the last were 3E at Worthing on Apr 7. Late year records were 2 on Henfield Levels on Dec 14 and 2 females on the Adur at Shoreham on Dec 28.

0225 **RUDDY DUCK** *Oxyura jamaicensis*

Rare winter visitor

The cold weather unusually forced 5 onto the sea off Hove on Jan 3, with 1 still there on 5th. A pair were noted in the Canal on Jan 8, and a female near Cuckoo Corner the same day. Later in the year 1 was on Brooklands on Nov 11.

0239 **RED KITE** *Milvus milvus*

Rare vagrant

The first was a single over Cissbury on May 17 which had a yellow wing-tag. Two were reported over Shoreham Flyover on May 26 and maybe the same in the Patching/Clapham Woods area on the 30th. One at Newtimber Hill on July 28 was seen being mobbed by Rooks. In Aug there was 1 at Harrow Hill (12th) and another at Cissbury (22nd). Presumably all were submitted to the SOS for consideration.

0260 **MARSH HARRIER** *Circus aeruginosus*

Scarce passage migrant

The area's first wintering bird came to roost to the west of the Airfield and was reported

from Jan 1-11. Further records in spring were 1 in off the sea at Worthing on Mar 28 and a female at the Airfield on Apr 2. A good number in Aug: 1 imm at Cissbury Stump Bottom on 10th, and probably the same on six dates around the Cissbury/Findon area. Others were 1 female at Sheepcote on 9th, 1S over Brighton on 12th, and 1 at Harrow Hill on 23rd. A good year for the species ended with 1 imm over Hove on Sept 4 and 1 at Cissbury on Oct 5.

0261 HEN HARRIER *Circus cyaneus*

Passage and occasional winter visitor

Early year records were a male at Poor Brow, Standean on Jan 23, and a pair noted in the same area on Feb 5. Ringtails were seen in Mar with 1 at the Chattri, Patcham on 23rd and another the next day at Lychpole Hill. A late spring record was at Broadwater on May 21. The only end year record was 1 reported nr Ditchling Beacon on Dec 14.

0263 MONTAGU'S HARRIER *Circus pygargus*

Scarce spring and autumn migrant

An adult male first noted at Harrow Hill on Aug 15 (PJ) seen again at Cissbury on 18th (BFF), and Steep Down on 20th (SRA) has been accepted by SOS. Additional records, but unsubstantiated, were at Storrington on Aug 9 and 1 nr Steyning on Sept 2.

0267 GOSHAWK *Accipiter gentilis*

Very rare in SDOS area but increasing in Sussex

The following reports were received but it is unlikely any were submitted to SOS: one was over Brighton on Jan 14, then one at Warren Hill, Washington on Mar 1 and one at Wappingthorn on Apr 15. In the autumn there was a report of a male at Storrington on Sept 20 and another male over the Wildpark on Oct 29. A brief description of the latter was taken but was not submitted to SOS.

0269 SPARROWHAWK *Accipiter nisus*

Fairly common resident

Numerous reports from around the area, included observations in urban areas such as Preston Park, Brighton and hunting on coastal habitat at the Harbour entrance and at West Pier. Breeding confirmation was 3 prs at Findon Valley and single prs at Chantry Hill, Offington, Sheepcote, Wildpark and Withdean. Regularly reported and probably bred at Benfield Valley, Cissbury, Ferring Rife, Patching, Upper Beeding and Woods Mill. Birds were ringed at Cissbury on Aug 31 and Nov 2.

0287 BUZZARD *Buteo buteo*

Scarce but increasing resident and passage migrant

Many reports during the year from the Downs, most of which were in the Aug/Sept period. Up to 4 were in the Harrow Hill/Chantry Hill area, and a similar number between Cissbury and Chanctonbury. Elsewhere there was 1E over Marina (Jan 13), 1W at Benfield Valley (Mar 31), 1N over Brighton (Apr 15), and 1E at Worthing (May 4). In Sept singles were reported at Highden Hill, Sompting and 2-3 at Steyning Round Hill.

0301 **OSPREY** *Pandion haliaetus*

Rare passage migrant

Over-flying birds were 1E off Shoreham on May 4, 1SW at West Worthing on July 26 and 1S at Steyning Round Hill on Sept 5.

0304 **KESTREL** *Falco tinnunculus*

Fairly common resident

Reported as breeding from 18 sites within the area, with 1 pr raising 4 young at Long Furlong, and 8 noted there on July 27. Eight were also noted at Lancing Steep Down on Aug 23. Birds were twice recorded on seawatches from the Marina in May and Oct.

0309 **MERLIN** *Falco columbarius*

Scarce but regular in autumn/winter

Monthly sightings were 1 in Jan from the Adur, 1 in Feb at Standean; 4 in Mar at Hove, Ferring, the Marina and Lychpole Hill; 2 in Sept at Harrow Hill and Steyning Round Hill; 4 in Oct at Chantry Hill, New Salts Farm, Steep Down and Wildpark; 4 in Nov from Lancing and New Salts Farm; and finally 2 in Dec over urban Lancing and Worthing Pier.

0310 **HOBBY** *Falco subbuteo*

Regular passage migrant, has bred

Monthly totals across the area were:

Apr	May	Jun	Jul	Aug	Sep	Oct
4	10	4	10	4	16	-

The first was at Goring on Apr 20 followed by singles at Brighton, Sompting and Woods Mill. The high July count included a number

from possible breeding sites. There were regular reports from Steyning Round Hill from Sept 19-28, and the last birds were on Sept 30 at the Airfield and Sheepcote Valley.

0320 **PEREGRINE** *Falco peregrinus*

Scarce but increasing resident and winter visitor

Many records from all months and wide-ranging across the area. Most sightings were undoubtedly of the two pairs which roosted on the tall buildings and the West Pier in Brighton, and the old Power Station chimney at Southwick. Noted on seawatches, urban areas and inland over downland. There was a sprinkling of sightings of two birds seen together from Steep Down, Harrow Hill, Hollingbury Camp, Sheepcote and Steyning Round Hill. One pair bred and raised 4 young, of which 3 were later presumed killed by a fox, but a juv male survived through July.

0358 **RED-LEGGED PARTRIDGE** *Alectoris rufa*

Common introduced resident

Scrutiny of birds at Lower Standean revealed only 22 true Red-legged from a total of about 80 birds, the majority being Chukar. Red-legs were reported from over a dozen sites, the largest groups being 12 at Stump Bottom on Aug 12 and 9 at Steyning Bowl on Nov 1. Pairs were reported in the breeding season from Devil's Dyke, Waterhall and Wolstonbury Hill. The true status is unclear and members are asked to check plumage differences a little more closely.

0367 **GREY PARTRIDGE** *Perdix perdix*

Fairly common resident

Early year peak counts were 15 at East Kingston (Jan 19), 24 at Goring Gap (Jan 19), and 10 at the Airfield (Jan 6). One pair bred at Beeding Brooks and Wildpark LNR, and 2 prs at East Kingston where 14 were noted (Oct 29). May have bred in the Lancing College area, Washington and there were 3 prs at Sheepcote but no young were seen there. Post breeding coveys included 21 at Sompting (Aug 12) and 43 at Goring Gap (Dec 14). The most unusual record was one flushed from Brighton seafront promenade near the Marina (Dec 22).

0370 **QUAIL** *Coturnix coturnix*

Rare but regular summer visitor

Calling birds were first heard at Steyning Bowl on June 23 and again on the 28th. Next were birds at Cissbury and Lancing Clump. In July noted from Mill Hill on 2 dates, 2 at Chantry Hill on 17th, and 1 nr Brighton on 30th. In August calls noted from Blackpatch Hill, Cissbury (3), Harrow Hill, Sheepcote Valley and Steyning Bowl. The last was one at Steyning Bowl on Sept 6. Probably bred in the area, but no confirmation received.

0394 **PHEASANT** *Phasianus colchicus*

Common introduced resident

Widespread but under-reported. Present at Ferring Rife all year with max 9 on Mar 27 but breeding was not proven. Noted from Benfield Valley and breeding was confirmed at Goring Gap (1 pr) and Wildpark LNR (2 prs). A pure white bird was seen at Michelgrove on Mar 8 and possibly a second bird later in Mar in the Lychpole Hill area.

0407 **WATER RAIL** *Rallus aquaticus*

Regular winter visitor, may breed

Not surprisingly most records were during the cold spell in Jan, when singles were reported from Adur railway bridge, Cuckoo Corner, New Salts Farm, the Airport, Strivens Reedbed, Steyning Levels and Woods Mill. At Ferring Rife at least 2 birds were present into Feb and 1 was seen on Mar 8. In Dec Ferring Rife had up to 3 birds and 1 was also at Strivens Reedbed.

0424 **MOORHEN** *Gallinula chloropus*

Common resident and winter visitor

Early year records from Brooklands were max 15 (Jan 15) and 22 (Feb 5). There were 2 inside the Marina during Jan/Feb. At Ferring Rife 4-8 were regular throughout the year but breeding was not proven. A late year count from Brooklands was 15 (Dec 21).

0429 **COOT** *Fulica atra*

Common resident and winter visitor

The monthly maxima at Brooklands were as follows:

Jan	Feb	Mar		Jul	Aug	Sep	Oct	Nov	Dec
130	84	33		36	54	80	120	101	80

During the cold spell max 13 were inside the Marina on Jan 3 with 6 still there on Feb 7. Also 4 were in the Canal on Jan 4. Nest building noted at Brooklands on Mar 12 with 4 prs eventually nesting there. Noted at Patching Pond but no nesting details submitted. At least 1 inside the Marina from Dec 6 to year end.

0450 **OYSTERCATCHER** *Haematopus ostralegus*

Common winter visitor and passage migrant, occasional breeder

Max counts at Goring Beach were Jan - 45 Feb - 53. Small numbers were at Adur Saltings and Southwick Beach during this period. The monthly seawatching totals were as follows:

	Jan	Feb	Mar	Apr	May	Jun	Jul	Aug	Sep	Oct	Nov	Dec
Brighton	16	19	46	104	93	5	-	5	7	11	4	26
Worthing	14	10	5	109	39	-	8	8	-	2	7	13

The peak counts were 24E at Worthing (Apr 2), 40E (Apr 8) and 12E/13W (May 1) from the Marina. Two were noted inland: 1E over Hollingdean (May 23) and 1 heard in the late evening over Preston Park (Dec 22).

0456 **AVOCET** *Recurvirostra avocetta*

Uncommon, but regular passage migrant

Seawatching records, all E, were as follows: from the Marina 18 in one flock (Mar 17), 2 (Mar 29), 3 (Apr 8), 1 (Apr 23), 1 (May 1) and 1 (Oct 29) and from Worthing 4E (Apr 8) and 6E (May 16).

0470 **RINGED PLOVER** *Charadrius hiaticula*

Common winter visitor and passage migrant; attempts to breed

The highest monthly counts from the main sites were:

	Jan	Feb	Mar	Apr	May	Jun	Jul	Aug	Sept	Oct	Nov	Dec
Adur	-	-	-	-	-	-	-	134	112	-	-	-
Goring	49	60	-	-	-	-	-	-	-	70	-	-
Marina	30	-	-	-	43	60	44	62	68	-	-	-
Shoreham	-	6	-	-	-	-	-	-	-	-	200	-
Worthing	-	-	-	-	40	36	30	-	-	-	-	-

During the cold spell 2 were noted up-river nr Beeding CW on Jan 5. One pair bred at the Marina with 3 eggs seen, and 5 prs were present in Apr at Widewater but only 1 pr bred.

0482 **DOTTEREL** *Eudromias morinellus*

Rare passage migrant

A good series of records started with the discovery of 7 at Beeding Hill on Apr 22 (RS), then 2 present the next day, and 5-6 on Apr 26-27. A new flock of 6 appeared at the same site on May 6, with 2 on the 7th (BFF). In the autumn flocks were logged at Steyning Roundhill with 7 on Sept 1 (BM), 9 the following day (ADW), and differing counts of 3-7 birds to 4th (RAI et al). Additionally a single recorded at Wolstonbury Hill on Apr 15 was not submitted to SOS.

0485 **GOLDEN PLOVER** *Pluvialis apricaria*

Fairly common winter visitor

The year started with 30E on Jan 1 and 1E on the 3rd passing the Marina. There were 9 on the Adur at Shoreham on Jan 16, with 1-2 seen on the Airfield during Feb. Further singles were noted on seawatches from the Marina and Worthing, the last on May 4. In the autumn unusually 4 flew low through Brighton Cemetery on Sept 19. Better numbers occurred late in the year with max 20 around the Airfield/Adur during Nov/Dec, 40 at Annington Farm on Dec 22 and 45 on Steyning Levels on Dec 21. Also a single was on the Downs near Chantry Hill on Nov 22.

0486 **GREY PLOVER** *Pluvialis squatarola*

Common winter visitor and passage migrant

Wader counts from the main sites produced the following monthly max:

	Jan	Feb	Mar		Oct	Nov	Dec
Adur	15	19	25		-	-	8
Goring	121	41	-		-	3	-

The Goring roost count was well under the counts from the last two years. Spring seawatch totals were generally low, the highest count being 12E at the Marina on May 2. There were 32W at Worthing on Nov 6. Inland records were 1E over Hollingdean on Sept 9 and 1 at Annington Farm with Golden Plover on Dec 22.

0493 **LAPWING** *Vanellus vanellus*

Common winter visitor but declining breeder

On Jan 1 the count at New Salts Farm was 50, increasing to c1,000 on 25th, and 300 on Adur Saltings on Feb 1. Few were recorded elsewhere at this time with max 38 at Ferring Rife on Jan 2 and 30 at Upper Beeding on Jan 6. Breeding records were 2 prs Lancing Steep Down, 1 pr at Applesham, Beeding Brooks, Chanctonbury and Storrington. Probably bred at Cote Street, Durrington and Lower Standean. An early flock was 20 at Harrow Hill on June 6 followed by 80 at Chantry Hill in July, then max 420 at New Salts Farm on Aug 4, max 300 at Ferring Rife on Nov 11, with 1,000 on Henfield Levels the same day, and 1,200 at the Airfield on Dec 28. Elsewhere smaller counts were noted of around 300 from the Adur valley.

0496 **KNOT** *Calidris canutus*

Regular passage migrant

Very few records. The first was one on Hove Lagoon from Jan 5-7. Small numbers noted on four spring dates from seawatching bases, with 15E on Apr 23 at the Marina being the highest count. There was a single on Widewater on July 21, then 9W at Worthing on Aug 9, and a single periodically on the Adur during Sept and 1 on Dec 21.

0497 **SANDERLING** *Calidris alba*

Common winter visitor and passage migrant

Apart from the beach counts shown overleaf, other records were 2 on Southwick Beach on Jan 1, with 3 on the Adur, Shoreham on Jan 5-7. In April there were 38E off Worthing on 7th. Seawatching from Worthing in May produced a month's total of 90 with 12 on

31st, whilst the Marina produced 21E on 15th. There were 5 at Worthing Beach (Aug 31), then 1 by the Adur, Tollbridge (Sept 27) and 2 on Worthing Beach (Oct 12). The Goring roost moved west just outside the area in Dec.

The max beach roost counts for Sanderling were as follows:

	Jan	Feb	Mar	Apr	Sept	Oct	Nov	Dec
B'lands	-	-	20	10	-	6	-	90
Goring	5	77	70	100	-	-	45	-
Widewater	50	-	23	-	-	-	-	35

0509 CURLEW SANDPIPER *Calidris ferruginea*

Scarce passage migrant

All records received were: 1 at Widewater on Aug 6-7, 1 on the Adur towpath on Aug 25, 1 on the Adur Saltings from Sept 9-11 and 3 there on Sept 10.

0510 PURPLE SANDPIPER *Calidris maritima*

Scarce winter visitor

The monthly maxima from the Harbour and the Marina were as follows

	Jan	Feb	Mar	Apr	May	Jul	Aug	Sep	Oct	Nov	Dec
Marina	9	7	7	4	8	2	1	1	4	9	9
Shoreham	4	7	5	1	-	-	-	-	2	6	4

Apart from the two main sites there were: 1E at Goring (Oct 4), and from Southwick Beach: 4 (Jan 10), 5 (Feb 22) and one (Dec 28). The July/August dates are very unusual.

0512 DUNLIN *Calidris alpina*

Common winter visitor and passage migrant

Early year records included 150 on the Airfield on Jan 1 and small numbers at Ferring Rife. An inland single was near Upper Beeding on Jan 11. The max roost counts were:

	Jan	Feb	Mar	Apr	Sept	Oct	Nov	Dec
Adur	200	250	-	-	-	-	250	-
Goring	295	800	170	-	15	-	150	-
Worthing	260	676	60	36	-	-	80	60

Seawatching totals were unremarkable, the peak counts being 22 on Apr 27 at Worthing and 19E on May 2 at the Marina. The monthly totals were as follows:

	Jan	Feb	Mar	Apr	May	Oct	Nov	Dec
Marina	18	4	9	14	56	2	3	22
Worthing	-	-	-	106	29	-	62	-

The only other autumn reports were small numbers at Widewater during Aug, and 1E at Sheepcote on Sept 26. Other than roost gatherings the only significant late year count was 62W at Worthing on Nov 6.

0517 **RUFF** *Philomachus pugnax*

Scarce winter visitor and passage migrant

The only records were: one at Wyckham Pond (Jan 1 and 4), two on Henfield Levels (Mar 4) and one on Steyning Levels (Dec 25).

0518 **JACK SNIFE** *Limnocyrtus minimus*

Winter visitor in small numbers

In Jan reported from Broadmere Common, Cuckoo Corner, Ferring Rife, King's Barn Levels, Sheepcote and Shoreham Airport and 2 at Strivens Reedbed. The only late year record was one at Ferring Rife on Dec 9.

0519 **SNIFE** *Gallinago gallinago*

Common winter visitor

The year opened with a single on a frozen Brooklands, max 10 at Ferring Rife, and 20 at Steyning Levels all on Jan 1. Further records were 4 at Upper Beeding, 15 at Strivens Reedbed, 1 at Woods Mill and 1E over Brighton Racecourse. There were still 3 on Ferring Rife during Mar and 2 on Apr 10. Late year records included 1 at Widewater on Aug 14, then 1-3 regularly at Ferring Rife during Oct, 1 at Patcham on Oct 17, 45 on the Adur on Nov 26, max 30 at Ferring Rife on Dec 9 and a high count of 130 on Henfield Levels on Dec 17.

0529 **WOODCOCK** *Scolopax rusticola*

Winter visitor and passage migrant

Reported from 14 sites during Jan, mainly as flushed singles, but max 11 at Sheepcote (1st) and 3 near Cuckoo Corner (4th). In Feb there were singles at Cissbury and Wildpark LNR. None were reported then until late year with in Nov: singles on 3 dates at Sheepcote, at the Marina (unusually) on the 7th, and at Lancing and the Sanctuary. Lastly one was in the Wildpark on Dec 23.

0532 **BLACK-TAILED GODWIT** *Limosa limosa*

Uncommon passage migrant and winter visitor

Small numbers were resident on Adur Saltings during Jan/Feb with 1-4 reported. In May there was a single in summer plumage on Widewater on the 1st and 18E off Worthing on the 17th. Another was on Widewater on Aug 14 and lastly a flock of 100S over Sheepcote on Sept 3 was a very unusual sighting.

0534 **BAR-TAILED GODWIT** *Limosa lapponica*

Common passage migrant and regular winter visitor

Counts at Goring Beach were 10 (Jan 4) and 20 (Feb 16/Mar 3). There was also a single on Adur Saltings from Jan 2-10. Seawatching records commenced with 2E at Marina (Mar 8), then high counts of 1573E (Apr 21) and 172E (Apr 25). In May there were 151E (1st) and 118E (2nd). Late year records were: one at New Salts Farm (Aug 3), 10 on the Adur (Aug 27), 2W off Worthing (Sept 30), 2 on Goring Beach (Nov 29) and lastly 1 on the Adur (Dec 26-28).

0538 **WHIMBREL** *Numenius phaeopus***Common passage migrant**

Monthly seawatching totals were as follows:

	Jan	Feb	Mar	Apr	May	Jun	Jul	Aug
Marina	-	-	4	126	210	-	-	1
Worthing	1	-	-	43	88	-	-	2

Notes were taken of one past Worthing (Jan 5). The first spring migrants were 2E at the Marina on the early date of Mar 11. The peak counts from the Marina were 22E (Apr 19), 123E (May 1) and 41E (May 2), and from Worthing 30E (May 4). Inland sightings were: singles over Hollingbury Camp on 2 dates in Apr, 8 over Henfield Levels (May 8), and in Aug one over Lancing Clump on the 26th.

0541 **CURLEW** *Numenius arquata***Common passage migrant**

There were 3 at Shoreham (Jan 2) and a single on Goring Beach (Jan 4) was reported by observer as being unusual here. Inland there were 8 at Steyning Levels (Jan 1), 4 nr Upper Beeding and 2 on Henfield Levels both on the 11th.

The monthly max at seawatching sites were:

	Jan	Feb	Mar	Apr	May	Jun	Jul		Oct	Nov	Dec
Marina	16	-	14	8	11	5	1		1	-	4
Worthing	6	-	5	28	4	15	-		4		-

Other records were 2E at Goring (July 7) and 2W over Steyning (Sept 20).

0546 **REDSHANK** *Tringa totanus***Common winter visitor**

Some very low counts in the early year period with max 20 (Jan 1) on Adur Saltings and 14 (Feb 1), and 10 at Goring Beach (Jan 11) with a max 14 there (Mar 9). Additionally there were 8 on Steyning Levels (Jan 1) and a single on Hove Lagoon (Jan 5-8). Very few were noted on seawatches. Late year peak counts were 25 on the Adur (Sept 26) and 16 at Goring Beach (Nov 15).

0548 **GREENSHANK** *Tringa nebularia***Regular passage migrant**

Spring records were 3E at the Marina (May 2), and one on the Adur (May 6). An inland record was one over Cissbury (July 13), followed by reports from Worthing of 2W (Aug 27) and 1E (Aug 31). One was regular around the Adur/Flood Arch area during Aug/Sept and 2 were noted on Sept 21.

0553 **GREEN SANDPIPER** *Tringa ochropus***Regular winter visitor**

Birds were present on the Adur Levels with max 4 (Jan 3) and 3 still there (Mar 2.) Nearby on Steyning Levels up to 4 were seen (Jan 1) with 3 resident through the month. Two were seen on Ferring Rife in this period, the last date being Mar 22. In the autumn

there was 1N at Sheeppote (Aug 7) and 1 at King's Barn Level on the same day, increasing there to 2 during Oct. Henfield Levels held 3-4 resident from Nov 15 to year end with max 8 at Stretham on Nov 17.

0556 **COMMON SANDPIPER** *Actitis hypoleucos*

Common passage migrant, occasionally winters

A wintering bird was seen on the Adur at Shoreham on Jan 5. Few were seen on spring passage with singles on 3 dates in May from the Marina and 4 on May 16 there. Autumn passage commenced with 2 at New Salts Farm (July 13) and 4 there on the 23rd. Then numerous records in Aug with a high count of 18 at the Marina on the 6th and 5 on King's Barn Levels on 1st. Up to 3 were at Stretham and Widewater, and others were noted from Brooklands, Cuckoo Corner, Ferring Rife, Worthing Beach, and Wildpark LNR where a bird flew in fog on the 22nd. In Sept singles at Shoreham Fort on 7th and the last on Worthing Beach on Oct 15.

0561 **TURNSTONE** *Arenaria interpres*

Common passage migrant and winter visitor

There were 2W on Jan 4 at the Marina and 4 at Southwick Beach the same day. The monthly max counts at the wader roosts were:

	Jan	Feb	Mar	Apr	Sept	Oct	Nov	Dec
Goring	-	17	14	20	-	-	16	-
Shoreham	14	8	-	9	10	16	-	20

Other counts were 29 on Brooklands Beach on Mar 12 and 10E at the Marina on May 15. There were 26 at Southwick Beach on Nov 15. Recorded in single figures at the Marina all months except June.

0565 **GREY PHALAROPE** *Phalaropus fulicarius*

Rare vagrant

A single E at the Marina on the morning of Oct 18 was the only record (ADW).

0566 **POMARINE SKUA** *Stercorarius pomarinus*

Regular spring passage migrant

A good year with sightings from the Marina as follows (all E): 1 (Apr 23, 24, 25, 26); a minimum of 48 (May 2 in 6hrs), 1 (May 3, 5, 12) and 4 (May 11). At Worthing the counts were 25E (May 2 during 2hrs after noon), 1 (May 3). On May 2 a flock of 15 was admired at 7.45am, but most passed through much later. Unfortunately coverage was incomplete through the day otherwise a higher total would have resulted.

0567 **ARCTIC SKUA** *Stercorarius parasiticus*

Regular spring and autumn passage migrant

The monthly seawatching totals were as follows:

	Apr	May	Jun	July	Aug	Sep	Oct	Nov	Dec
Brighton	38	64	-	-	2	7	1	1	1
Worthing	5	18	-	-	4	3	-	-	-

The first was 1E off Worthing on Apr 6. Peak counts were 12E (Apr 26), 12E (May 10) and 16E (May 11) from the Marina. There were 4W at Worthing (Aug 31) and 2W/3E off the Marina (Sept 2). Then 1 off Goring Gap (Oct 13) and 1W off Marina (Nov 8). Finally a dark phase bird lingered between Brighton Beach and the Harbour (Dec 30-31).

0569 **GREAT SKUA** *Stercorarius skua*

Regular passage migrant in small numbers

The monthly seawatching totals were as follows:

	Apr	May	Jun	July	Aug	Sep	Oct	Nov	Dec
Brighton	7	9	1	-	2	3	1	-	-
Worthing	1	8	1	-	1	-	-	-	2

The first was 1E off Worthing (Apr 23), then mainly one's and two's except 3E at the Marina (May 12) and 4E at Worthing (May 15). The June sightings were 1W at Worthing on the 1st and 1W at the Marina on the 21st. Return passage was unremarkable, the last (Oct 20) and the year ended with 2E off Worthing (Dec 25).

0575 **MEDITERRANEAN GULL** *Larus melanocephalus*

Regular passage migrant and increasing winter visitor

More records were received of this species than any other, and with some careful deliberations the following table shows the approximate number of birds reported:

	Jan	Feb	Mar	Apr	May	Jun	Jul	Aug	Sep	Oct	Nov	Dec
1st winter	-	-	3	2	-	-	-	-	-	-	3	4
1st summer	-	-	-	19	4	-	1	-	-	-	-	-
2nd winter	-	-	-	-	-	-	1	-	3	-	2	2
2nd summ.	-	-	2	1	-	-	1	-	-	-	-	-
3rd winter	-	1	-	-	-	-	-	-	-	-	-	-
adult	6	7	7	6	3	-	1	6	3	5	6	8
unstated	-	2	-	5	-	-	1	-	-	-	-	-
total	6	10	12	33	7	0	5	6	6	5	11	14

The spring totals were swelled by passage birds from the main seawatching sites. It is difficult to be certain of actual numbers as there could be some duplication, ie an adult from the Marina and nearby Sheepcote could have been the same bird; whilst the regular 1-2 adults at the Harbour (including the ringed bird) no doubt roost at Southwick, where at least 11 individuals were noted from July to Dec. Inland records were an adult at Steyning Levels on three Feb dates and Nov 29, an adult at Chantry Hill on Aug 13, and an adult returning to Dorothy Stringer grounds, Brighton in Nov for its 4th winter.

0578 **LITTLE GULL** *Larus minutus*

Regular on spring/autumn passage, occasional winter visitor

The first was on the early date of Mar 2 off Worthing. The highest from the Marina were 11E (Apr 13), 85E (May 2) and 31E (May 3). Seawatching produced the following totals:

		Mar	Apr	May		Aug	Sep	Oct	Nov	
Brighton		-	27	117		1	5	-	3	
Worthing		1	7	9		1	1	-	-	

Away from seawatching sites there were 2 off Goring (Apr 27), 1 juv on the Adur (Aug 27) and 1 ad at Hollingbury GC (Sept 20). Winter records: a 1st winter in the Harbour, a 1st W off Southwick on Nov 24 and 28, and finally a 1st W at the Marina on Dec 30.

0579 **SABINE'S GULL** *Larus sabini*

Rare passage migrant

A juv passed the Marina on Sep 12 at 1.12 pm (ADW, IJW) Accepted by SOS.

0582 **BLACK-HEADED GULL** *Larus ridibundus*

Common winter visitor and passage migrant

Early year counts at Ferring Rife were 400 (Jan 11) and 700 (Feb 9.) In Mar a flock of 1000 was recorded at Cissbury (9th) and 115 on the Wildpark arable field (10th). Seawatching peaks from Worthing included 419E (Mar 12,) 183E (Apr 9) and 350E (July 9). A flock of 300 were watched at Durrington on July 7 catching flying ants. The only inland count of note was 500 following the plough at Long Furlong Findon. Roost counts at the Marina were 700 (Sept 10), 2,000 (Oct 9), 700 (Nov 11) and 2,500 (Dec 6). Unfortunately this roost has now been built on. At Ferring Rife late year peaks were 360 in Nov and 260 in Dec.

0589 **RING-BILLED GULL** *Larus delawarensis*

Very rare vagrant

There was an unconfirmed report on the Canal on Feb 9. A 1st W bird was found at Southwick on Dec 6 and seen on subsequent dates to Dec 22 (ADW, IJW). The latter record is under consideration by SOS.

0590 **COMMON GULL** *Larus canus*

Common winter visitor

Early year records received were max 30 on Ferring Rife in Jan, 115 at Goring Gap (Mar 2), 1,000 in the Cissbury area (Mar 9), increasing to 2,000 (19th), and 1,300 on Southwick Beach (Mar 24). Peak counts off Worthing were 307E (Apr 7) and 301E the following day. Late year counts were 700 at the Marina roost (Nov 8) and a massive 8,000 at the Southwick Beach roost (Dec 27).

0591 **LESSER BLACK-BACKED GULL** *Larus fuscus*

Common in winter, now breeding in small numbers

Early year records were 5 at the Airfield on Jan 1, and max 18 at Ferring Rife on Feb 21. Breeding records were confirmed as 3 prs central Brighton, 3 prs at Durrington/Worthing, 1 pr at Hove and Shoreham. Worthing produced 17E during Apr seawatches. Inland there was 1 over Cissbury on June 28. Late year counts were 46 roosting on Brighton Beach on Oct 9; and 10 at Southwick Beach on Dec 24 were reported as *intermedius* or *fuscus*.

0592 **HERRING GULL** *Larus argentatus*

Common, expanding breeding population

Reports early year included 200 at Ferring Rife on Feb 16 and 1,000 at Cissbury on Mar 9. Breeding records were 14 prs in north Brighton (nr Hollingdean), 2 prs Hangleton Road, and 1 pr Southwick. Counts in July were 200 at the Marina on the 29th and 230 off Worthing on the 30th.

YELLOW-LEGGED GULL *Larus argentatus michahellis*

Regular autumn flock

Early year records were 2 on the Adur (Jan 5) and 1 at Southwick Beach (Jan 27/Feb 2). A good number of autumn counts of the Adur flock began with 6 (July 16), to 2 (Oct 19), and max count of 25 (Sept 2). At least 2 1stW birds were in the area: reported from the Adur in Sept/Oct and at Southwick (Dec 19). There was also 1 at Widewater (Oct 25).

0598 **ICELAND GULL** *Larus glaucoideus*

Rare winter visitor

First winter found at Portslade roost on afternoon of Nov 17 (ADW). Submitted to SOS.

0599 **GLAUCOUS GULL** *Larus hyperboreus*

Rare winter visitor

A 2nd W individual was noted at Worthing on Feb 19 (JAN) and presumably the same bird ranging between the Harbour entrance to west of Widewater on Feb 22 (BFF et al), then briefly at the Harbour entrance on the 23rd (CH). An immature was reported from Worthing Beach on Apr 6 (CWM).

0600 **GREAT BLACK-BACKED GULL** *Larus marinus*

Fairly common winter visitor

The only two early year reports were 25E at Marina (Jan 16) and 20 at Ferring Rife (Feb 10). Larger counts were 109 on the Lower Adur (Sept 23) increasing to 150 (Nov 23); and a roost count of 50 at the Marina (Sept 8) increasing to 200 (Nov 24). A ringed bird noted at the Marina between Aug 7 - Nov 18 was traced as a breeding adult from Jersey, to date their furthest recovery.

0602 **KITTIWAKE** *Rissa tridactyla*

Fairly common passage migrant and winter visitor

In Jan a single in the Harbour on the 1st and a handful of records from the Marina. Seawatching totals were as follows:

	Jan	Feb	Mar	Apr	May	Jun	Jul	Aug	Sep	Oct	Nov	Dec
Brighton	3	4	6	259	583	-	-	148	28	8	15	100
Worthing	-	-	3	12	50	-	-	-	-	-	7	20

The peak counts from the Marina were 160E (Apr 7), 164E (May 2) and 230E (May 19). Roost counts at the Marina built up from 40 in Aug to a max 120 (Sept 10). Late year records included 100W at Marina (Dec 7), the passage noted also from Worthing.

0611 **SANDWICH TERN** *Sterna sandvicensis*

Common passage migrant

Monthly seawatching totals were as follows:

	Jan	Feb	Mar	Apr	May	Jun	Jul	Aug	Sep	Oct	Nov	Dec
Brighton	-	-	24	746	621	-	-	-	106	9	4	-
Worthing	-	-	17	603	540	52	53	134	143	17	-	-

The first was 1E at the Marina on Mar 9, then a more general arrival from Mar 21-23. The peak counts were 205 (Apr 9) off Worthing, 133 off the Marina (Apr 23), 150 off the Marina (Apr 26) and 144E off Worthing (May 3). Of interest were 7 seen swimming on the sea for 5 mins off the Marina (Apr 24). In Oct late sightings were 14W at Worthing (11th), 2W at the Marina (12th) and lastly 2 off the Marina (Nov 20).

0615 **COMMON TERN** *Sterna hirundo*

Common passage migrant

Most of the reports of seawatching sites referred to Common/Arctic (Commic) the monthly totals being:

	Apr	May	Jun	Jul	Aug	Sep	Oct
Brighton	79	1566	-	-	14	224	50
Worthing	86	471	-	33	82	92	4

The first was on Apr 7 noted at both the Marina and Worthing. The peak Apr count was only 76E (25th), the main passage being in May with 1078E at the Marina (3rd) and 129E (15th). In the autumn the peak was 155W (Sept 12) and a good number of late birds were recorded in October. These were 3 off Southwick (8th), 6 at the Harbour (9th), 1 at Widewater (14th), 3 off the Marina (20th), and finally 3W off Worthing (31st).

0616 **ARCTIC TERN** *Sterna paradisaea*

Noted on passage but rarely split from Common Tern

A number of reports specifically identifying Arctic Tern were: 5E (May 1), 66E (May 3) and 1E (May 11) all from the Marina; in the autumn a total of 13 off the Marina during Sept with 1 juv lingering from Sept 18-27; and a sprinkling of late birds with 1 off Southwick (Oct 8), 3 off the Marina the next day, 2 (13th) and finally 2 (15th).

0624 **LITTLE TERN** *Sterna albifrons*

Fairly common passage migrant

Spring passage commenced with 4 off Worthing on Apr 22, then 1E off the Marina the following day. Monthly totals were as follows:

	Apr	May	Jun	Jul	Aug	Sep
Brighton	11	152	-	-	-	-
Worthing	10	62	2	-	-	1

The peak count was on May 3 with 64E off the Marina, 45E off Worthing and 33E off Widewater. In the autumn there were only 2 records 1W off Worthing

on Sept 3 and a late bird off the Harbour on Sept 29.

0627 **BLACK TERN** *Chlidonias niger*

Regular passage migrant

The peak passage coincided with a big tern movement on May 3, with 35E at the Marina and 10E at Widewater. These were followed by 10 (15th), 1 (16th) and 1 (22nd) - all E at the Marina. In Sept there were: 1W at Worthing (3rd), 5W at the Marina (4th) and the last 1W at Marina (12th). A slight increase on the last couple of years.

0634 **GUILLEMOT** *Uria aalge*

Regular winter visitor

Other than 4W at the Marina (Jan 1) and 10 on the sea there (Jan 31), there were very few noted early year. On Feb 13 dead birds on the Harbour tideline numbered 4. Seawatch totals of specifically identified birds from the Marina were Jan - 13W/3E/16 on sea; Feb - 3W/14E; Apr - 14E; May - 5W/11E; July - 3E; Oct - 2 on sea; Nov - 1 on sea; Dec - 3E/1 on sea.

0636 **RAZORBILL** *Alca torda*

Scarce winter visitor and passage migrant

There were 2 off Hove on Jan 10, then a mini-influx with max 40 offshore at the Marina on Jan 27/28 and still 20 on the 31st. A small number of fatalities were found in Feb at Southwick Beach and the Harbour. Totals from the Marina thereafter were Feb - 5; Apr - 13; May - 11; Oct - 8; Dec - 3E/1 on sea.

0647 **LITTLE AUK** *Alle alle*

Very rare autumn migrant

Two birds were seen around the Marina with 1 on Dec 22 (KBJ), closely followed by another on the 25th (IJW).



0654 **PUFFIN** *Fratercula arctica*

Very rare spring migrant

One found dead on Southwick Beach on Mar 24 (CAH).

AUK Species

Movements of unidentified auks were from the Marina: Jan - 11, Feb - 20, Apr - 24, May - 29, Oct - 8, Nov - 2, Dec - 100. Additionally there were: 40-60 on the last two days of Jan, most of which were likely to have been Razorbills. The Worthing totals were Apr - 3, May - 5, Dec - 9. The peak late year count was 35W/15E at the Marina on Dec 7.

0665 **FERAL PIGEON** *Columba livia*

Common resident

Flock counts received were as follows: 370 in 1 hr flying in to roost at West Pier on Feb 2; a regular flock of 200-300 resident around Churchill Square, Brighton; max 260 at Preston Park on June 2; 260 feeding on stubble at the Wildpark on Aug 18; and finally, 400 roosted in central Brighton on Oct 14.

0668 **STOCK DOVE** *Columba oenas*

Common resident

Breeding records were: 1 pr Bevedean Down, 3 prs Brighton Cemeteries and 4 prs Wildpark/Hollingbury Woods. Also reported in the breeding season from Sandgate Sandpit and two other inland areas. In Oct there were max 11 at Sheepcote (29th) and 28 at Withdean Park, Brighton (25th).

0670 **WOODPIGEON** *Columba palumbus*

Abundant resident

Early year feeding flock counts included 200 at Cuckoo Corner (Jan 4), 100 max at Ferring Rife (Feb 16) and 400 at Cissbury (Mar 22). Breeding records were: 16 prs at Bevedean Down, 38 prs Brighton Cemeteries, and 58 prs Wildpark. Some notable movements occurred in Oct with 1850E at Worthing and 935E over the Marina on the 22nd, a total of c1000E over the area the next day, and 800E at the Marina on the 24th. A flock of 650E at Hove was logged on Nov 1.

0684 **COLLARED DOVE** *Streptopelia decaocto*

Common resident

Early year feeding flocks were 30 in Benfield Valley on Jan 1, and max 32 at Ferring Rife on Jan 28. Two were seen to fly in off the sea at the Marina on Apr 25. Breeding counts received were 8 prs Bevedean Down (an increase), 13 prs Brighton Cemeteries and 29 prs Wildpark LNR. Autumn counts were 50 in stubble at Mill Hill on Sept 17, and 80 at New Salts Farm on Oct 29.

0687 **TURTLE DOVE** *Streptopelia turtur*

Summer visitor, probably declining

For once, a good number of records from all over the area. The only Apr sighting was at Sompting Brooks on the 26th. Eight records in May were from Cissbury, Devil's Dyke, Washington Warren and Wiston Pond. There were further records in June (from Chantry Hill, Henfield Levels, Mill Hill and Wiston Estate) but no confirmed breeding. Fewer were seen in the autumn with just four records from Hollingbury, Lancing Clump and Park Brow in Aug, and the last at Steyning Round Hill on Sept 19.

0712 **RING-NECKED PARAKEET** *Psittacula krameri*

Scarce introduced resident

The small colony based in Hollingbury Woods has dwindled in recent years to just 3 birds. They do not now breed in the Woods but were reported flying over spasmodically during the year. They may have bred at the University of Sussex at Falmer. One was seen in a Hove garden on Jan 1 and unusually one flew in and perched on the Marina arm on Oct 29 staying for 15 minutes.

0724 **CUCKOO** *Cuculus canorus*

Fairly common summer visitor

First noted at Washington with 2 on May 1. The month produced further sightings from Cissbury, Ferring Rife and Fulking Downs. There were 2 reports during June from these sites and in July from the Airfield and Goring Gap. There were 2 reports in Aug with 1

at Mill Hill on 10th and a juv at Widewater on 16th. Reported as absent from two regularly watched areas, the Cuckoo is either under-reported or becoming quite scarce.

0735 **BARN OWL** *Tyto alba*

Scarce winter visitor and possibly resident

Early year records were 1-2 seen hunting at dusk around the Airfield from Jan - Mar, and another seen regularly in the Woods Mill area. Unfortunately 1 found dead at New Salts Farm on Mar 2. The only other record was 1 near Pyecombe on May 16. The bird seen at the Airfield was noted again during Dec.

757 **LITTLE OWL** *Athene noctua*

Fairly common resident

One was noted in Clapham Woods on Jan 10. Breeding confirmation was from Beeding CW; Golding Barn, Upper Beeding; New Erringham Farm and Storrington. Juveniles were seen at all four sites. Probably bred additionally at Cissbury, the Coombes area and Harrow Hill where there were a number of records. Elsewhere they were noted from the Airfield, Beeding Hill, King's Barn Levels, Sheepcote and Steyning. At Sheepcote 1 remained from Nov 12 into Dec. Urban records were 1 found dead at ASDA Hollingbury on Oct 21 and 1 in Preston Park, Brighton on Nov 23.

0761 **TAWNY OWL** *Strix aluco*

Fairly common resident

A pair were at Durrington on Jan 18 and calling was heard in the Goring area from Jan - Mar and again later in the year. Another was heard regularly from Easthill Park, Portslade. Breeding records were 1 pr in a Coombes garden raising 1 young, 1 pr at Lancing Clump raising 3 young and 1 pr at Sompting Abbots. Also noted from Ashurst Wood, Cissbury, Upper Beeding, Washington and Worthing.

0767 **LONG-EARED OWL** *Asio otus*

Scarce winter visitor

Single birds noted in Mar and Dec at two of the area's downland roost sites. A migrant flew through Sheepcote Valley on Mar 9.

0768 **SHORT-EARED OWL** *Asio flammeus*

Migrant and occasional winter visitor

Another poor year for this species. Spring records were 1W at Worthing on Apr 8/9, and 1 at Sheepcote on Apr 21. In the autumn 1W at Steyning Round Hill on Sept 4, 1N at Cissbury on Sept 20 and 1E at Sullington Hill on Sept 27.

0778 **NIGHTJAR** *Caprimulgus europaeus*

Rare summer migrant, formerly bred

One flushed from breakwater at the Marina on May 27 (KBG).

0795 **SWIFT** *Apus apus*

Common summer visitor and passage migrant

A generally late spring arrival with the first at Broadwater on May 1, and further

sightings the next day at Hollingdean, Steyning Levels and Worthing. Main arrival seemed to be from May 16. Mid-summer flocks were noted between June 26-28 with 100 at High Salvington, 200 at Ferring Rife and 384NE at Goring in stormy conditions. Peak counts of screaming parties were 70 from Hollingdean and 52 in the Preston Park area, Brighton. Autumn counts included 75 at Cissbury on Aug 2, and 90 at Broadwater on Aug 8. In Sept noted from Ferring Rife (3rd) and from Harrow Hill, central Brighton and 2W at Hollingbury Camp (4th). An extraordinarily late bird at Widewater on Nov 6 (SRA).

0798 **ALPINE SWIFT** *Apus melba*

Rare vagrant

One reported briefly at Worthing on May 14 at roof top height. No further details.

0831 **KINGFISHER** *Alcedo atthis*

Scarce resident and winter visitor

Regular in 4 areas during Jan with a resident in the Marina all month, also from Adur/New Salts Farm area, Ferring Rife and Steyning Levels. Other early year sightings were from Broadmere Common, the Mumbles and Woods Mill. No breeding records were received. The only summer records were 1 at New Salts Farm on July 23 and unusually 1 at the Marina on July 28 and again on Aug 14. Late year sightings were from Adur Saltings, Beeding Brooks, Brooklands, Coombes and Shoreham Fort.

0856 **GREEN WOODPECKER** *Picus viridis*

Common resident

Breeding records were from Bevendean Down, Cissbury, Ferring Rife, Findon Valley, Goring Gap, Lancing Clump, Warren Hill, Withdean Woods and 2 prs Wildpark LNR. A surprise sighting was 1 at the Marina on Apr 2. Three were ringed at Cissbury in the autumn.

0876 **GREAT SPOTTED WOODPECKER** *Dendrocopus major*

Common resident

Breeding prs were reported at 7 sites, with 2 prs possibly breeding at Warren Hill and Wildpark LNR. Garden visits were regular at Coombes and Storrington, also on bird feeder at Hollingdean allotments. Sightings at Southwick Hill in July (observer's first sighting for area) and Sheepcote on Aug 24 (rarely noted here, possible migrant) were reported as unusual.

0887 **LESSER SPOTTED WOODPECKER** *Dendrocopus minor*

Scarce, has bred

Bred at Washington Warren and on the Wiston Estate. Also reported from New Salts Farm on Jan 10, an unusual location, and at Patcham on Mar 15, Sandgate Park on Apr 22 and a Storrington garden on June 22.

0974 **WOODLARK** *Lullula arborea*

Rare passage migrant

1E over Wildpark LNR on Oct 23 (PJW) was the only record.

0976 **SKYLARK** *Alauda arvensis*

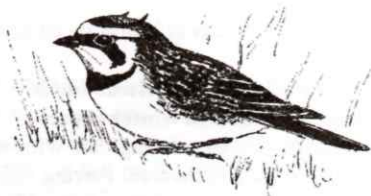
Common resident

A notable flock nr Cuckoo Corner on Jan 6 was counted between 700-900 by different observers. Another large flock of 250 was seen at Ditchling Beacon on Jan 10. Smaller flocks were noted in Jan at Sheepcote and Upper Beeding. Breeding counts were 5 prs Beeding Hill, 9 prs Bevendean Down, 9 prs Chantry Hill, 2 prs Whitehawk Hill and 8 prs Wildpark. Passage peaks in the autumn were 250 at Sheepcote and 102 at Hollingbury Camp (Oct 23), and earlier 50E at Goring Gap (Oct 18). Few late year flocks were reported, just 57 at Goring Gap (Oct 25) and 35 at Steyning Bowl (Nov 1).

0978 **SHORE LARK** *Eremophila alpestris*

Rare winter visitor

Two in off the sea at the Marina on Nov 4 (IJW). Accepted by SOS.



0981 **SAND MARTIN** *Riparia riparia*

Summer visitor and common passage migrant

A rather poor spring with the first at the Marina on Mar 23, followed by 3 at Sandgate Sandpit on 31st. In Apr just 3 at Ferring Rife (13th) and 25 at Sandgate Sandpit (13th) where c5 prs bred. At Rock Common c20 prs bred. Autumn records included 7NW at Wildpark on Sept 4, 58E at Sheepcote on Sept 11, 2 at Cissbury on Sept 12 and 30 at New Salts Farm on Sept 21.

0992 **SWALLOW** *Hirundo rustica*

Common summer visitor

First arrival date was on Apr 4 with 1 over Hollingbury Camp and 2 at Steyning. Apart from 38N at Worthing, very few were noted in spring in any numbers. Breeding records were from Benfield Valley and Patcham Court Farm, and 3 prs at Coombes Old Rectory. There were below average numbers in the autumn, when the highest counts were 800E on Sept 10 at Sheepcote and unusually 400N off the sea at Goring Gap on Sept 6. The autumn total from Hollingbury Camp was only 830. Many coastal records through Oct included 100E at Goring (15th), then over 20 birds in Nov with 5 at Upper Beeding (5th), 4 at the Marina (16/17th) and the last over Pavilion Gardens, Brighton (20th).

0995 **RED-RUMPED SWALLOW** *Hirundo daurica*

Rare spring passage migrant

An unconfirmed record on May 6 at Upper Beeding.

1001 **HOUSE MARTIN** *Delichon urbica*

Common summer visitor

Only 4 incoming records were received in spring, with 1 nr Steyning (Apr 17), 1 at Benfield Valley (Apr 28) and 2 at Cissbury (May 10). Breeding records included 3 prs Mile Oak, 1 pr Steyning, and 6 prs Toads Hall Valley. In the autumn a massive 8000 at Sheepcote (Sept 18) proved to be the exception on an otherwise poor passage. The Hollingbury Camp total was only 137, whilst elsewhere counts of 100+ were reported on

only 4 dates, the only other high count being 500 (Sept 13) at the Sanctuary. Many were reported in Oct but the last were 2E at Storrington (Nov 16) and 1 at Ferring (Nov 29).

1009 **TREE PIPIT** *Anthus trivialis*

Fairly common passage migrant

The only records received for spring were from Hollingbury Camp with 2 (Apr 10) and 1 (Apr 19). Rather low totals for autumn were 30 at Sheepcote Valley, 10 at Cissbury and only 7 at Hollingbury Camp. Max count at Sheepcote was 12 (Aug 26), and the last date was at Hollingbury Camp (Sept 23).

1011 **MEADOW PIPIT** *Anthus pratensis*

Locally common resident

Early year counts of note were 40 at Tolmare Farm Findon (Feb 5) and passage birds from the Marina peaked at 108 (Mar 7) and 87 at Goring Gap (Mar 23). Breeding counts were 2 prs Bevendean Down, 5 prs Whitehawk Hill, 2 prs Wolstonbury and 1 pr each Upper Beeding and Fulking Downs. Autumn passage was unremarkable with 100E at Goring Gap and 162E at Worthing (both on Sept 21), 83 at Hollingbury Camp (Sept 29), 250W at the Marina (Oct 11) and 150E at Goring Gap (Oct 15). Feeding flocks included up to 160 in a peafield at Goring (Oct 18) and 100 at Golding Barn (Sept 21). Reported late year from Ferring Rife and coastal beaches in low numbers.

1014 **ROCK PIPIT** *Anthus petrosus*

Regular winter visitor, occasionally breeds

Early year max was 11 at Shoreham Fort on Jan 1, with 10 still there on 24th and 4 on Feb 2. Singles were noted in Jan from Hove Lagoon and Goring Beach. One pr bred at the Marina raising 2 broods in spite of nearby building work. Another pr were noted on the SODS boundary at the Marina undercliff during the breeding season. Late year records were from Southwick Beach, max 8 on Nov 17; Widewater, max 5 on Dec 10; Shoreham Fort, max 6 on Oct 13; and 2 at the Marina in Nov/Dec.

A number of older records from the Shoreham Fort/Widewater area, particularly during Feb/Mar, are currently under review. A percentage of these records are thought to be of the Scandinavian race *littoralis*. Members are reminded that this subspecies and Water Pipit require full notes and description to SOS.

1015 **WATER PIPIT** *Anthus spinoletta*

Scarce winter visitor

The only accepted records were a single at Adur Tollbridge from Jan 5-6 (CH, LJW).

1017 **YELLOW WAGTAIL** *Motacilla flava*

Common passage migrant

Only 9 spring migrants were reported, the first being 2 at Worthing on Apr 8. Return migration started in July with 6W at the Marina on the 24th. The main autumn passage commenced with 8W at Wildpark on Aug 18 through to the last at the Harbour on Oct 13. Highest counts included 35 in one flock at the Marina (Sept 20), 30 at Sheepcote Valley (Aug 31) and 20 at Goring Gap on two dates in Sept. Autumn totals were 11 at Cissbury and 104 at Sheepcote.

1019 **GREY WAGTAIL** *Motacilla cinerea*

Noted on passage, may breed, regular in winter

Widely reported, particularly for the early year period Jan - Mar, and from both urban and rural sites. Regular at Ferring Rife and Steyning Levels at both ends of the year, but no breeding records submitted. Passage was noted in Mar at the Marina, and in autumn from Cissbury, the Marina (9E in Oct), and Sheepcote (total 14 with 4 on Sept 24).

1020 **PIED WAGTAIL** *Motacilla alba*

Common resident

Apart from 42 at the Harbour on Mar 11, very few were reported early year. One pr bred at the Marina rearing 2 broods. Flock counts in the autumn were 21 at Ferring Rife on Oct 15 and 38E at Sheepcote on Oct 27. Roost gatherings were noted with 80 on Marina buildings in Nov; and 40 at ASDA Hollingbury and 57 at East Worthing Industrial Estate both in Dec. Beach-feeding flocks were noted from Brighton, Shoreham and Southwick. Birds identified as White Wagtails (*M. a. alba*), all in Mar, were 1 at Goring Beach (DIS), 1 at Shoreham Fort (KN), 4 at Widewater (KN) and 1 at the Marina (PJW).

1066 **WREN** *Troglodytes troglodytes*

Very common resident

Breeding season counts were 21 prs Bevendean Down, 22 prs Brighton Cemeteries and 73 prs Wildpark LNR. A total of 38 were ringed at Cissbury from Apr 13 to Nov 2.

1084 **DUNNOCK** *Prunella modularis*

Very common resident

Breeding season counts were 18 prs Bevendean Down, 12 prs Brighton Cemeteries and 52 prs Wildpark LNR. A total of 44 were ringed at Cissbury.

1099 **ROBIN** *Erithacus rubecula*

Very common resident

Breeding season counts were 25 prs Bevendean Down, 26 prs Brighton Cemeteries and 124 prs Wildpark LNR. One pr also bred in a Hove Park nestbox. A total of 60 were ringed at Cissbury from Apr 13 to Nov 2.

1104 **NIGHTINGALE** *Luscinia megarhynchos*

Passage migrant, occasionally breeds

There were no Apr records, but in May 2 singing males were on the old Railway Line between Old Erringham Farm and Beeding CW, and 7 singing males in the Woods Mill/Oreham Common area. One pr bred at Sullington Warren and also at nearby Gerston Farm Storrington. At Sheepcote there were 3 sightings in July and 3 in Aug. There were 2 ringed at Cissbury on Aug 9 and Sept 21, with 5 seen there during the period.

1121 **BLACK REDSTART** *Phoenicurus ochruros*

Regular autumn/winter visitor, has bred

There surely can't be many other areas of the country where Black Redstart records outnumber those of Common Redstart! In Jan/Feb up to 4 in the Harbour/ Fort area, 1M and 2F at Southwick Beach, 1 at Widewater and 2 at the Marina. Singing males were

reported from 2 sites in Mar/Apr. Additional birds during migration times were 1 at Ferring Rife (Mar 12), 4 at the Marina (Mar 21), with 2 also (23rd), and 1 at Cissbury on (Apr 23). Passage birds in the autumn were 3 at the Marina (Sept 21), singles from Hollingbury Camp, Cissbury, Patcham and Sompting Brooks, and 2-3 at the Marina during Oct. Wintering birds were up to 3 at Southwick Beach from Nov 22, 1 at Widewater (Nov 23), 1 around Shoreham Fort and 2 at the Marina during Nov-Dec.

1122 **REDSTART** *Phoenicurus phoenicurus*

Fairly common passage migrant, especially in autumn

The first spring arrival was at Steyning (Apr 11), then 1m at the Marina (19th), 4 at Sheepcote (22nd) and others from Adur Rec, Ferring and Hollingbury Camp. None were reported in May. Autumn passage commenced on Aug 16 but numbers seemed low, mainly just one's and two's. Only 5 were ringed at Cissbury and the peak count was 6 at Steyning Round Hill (Sept 6). Late birds were: 1 at Harrow Hill (Oct 4), 1 at Hove (11th) and the latest ever for the SDOS area was at Cissbury on Oct 28 (AW).

1137 **WHINCHAT** *Saxicola rubetra*

Common passage migrant

Very few were noted in spring with just singles at the Airfield, Cissbury, Goring Gap and max 5 at Sheepcote Valley from Apr 24 to May 6. Returning birds were reported from Aug 15 with 5 at Cissbury. High counts were 25 at Sheepcote (Aug 21), and 43 there on Aug 31 (Aug total 210), 11 near Chantry Post (Aug 24), 45 at Steyning Round Hill (Sept 2) and 10 at Lancing Clump (Sept 4). Late birds were at Sheepcote and Wyckham Farm at end of Sept, the last were 2 on Sompting Brooks (Oct 19).

1139 **STONECHAT** *Saxicola torquata*

Regular winter visitor, occasionally breeds

Wintering birds were noted in Jan/Feb at Ferring Rife, New Salts Farm and Widewater. Migrants in Mar were at Goring Gap on 3rd and the Marina on 7th. Breeding records were 1 pr Chantry Post, 2 prs Cissbury area and 1 pr Whitehawk Hill. Probably bred at Benfield Valley, Mill Hill and Steep Down, where co-incidentally 4 were reported on Aug 20. Noted at 6 sites in Oct and at Sheepcote 2-4 were regular from Sept 29 through to Dec. Similarly noted regularly from Hollingbury Camp and allotments Oct/Nov and at Lancing Clump. Wintering birds were from Beeding Brooks and New Salts Farm.

1146 **WHEATEAR** *Oenanthe oenanthe*

Common passage migrant

Widely reported as the table of monthly totals shows:

Mar	Apr	May	June	July	Aug	Sept	Oct	Nov
27	329	1	-	-	42	152	5	3

The earliest birds were 2 at Steyning Round Hill (Mar 3), followed by 1 at the Marina the next day and 1 on Worthing Beach (9th). Best spring totals were much later with 22 at Sompting Brooks (Apr 1), 20 at Goring Gap (Apr 3), 17 at Beeding Hill (Apr 27), the same day giving a peak 30 at Sheepcote Valley. The single May record was on the late date of 27th at Goring. Autumn peak counts were 65 at Steyning Round Hill (Sept 2), 20

at Steep Down (Aug 25) and 26 at Sheepcote (Sept 8). Two were at Goring Beach (Oct 12), 1 at Ferring Rife (21st), 1 at Steyning Round Hill (25th) and 1 at the Marina (31st). The last at Sheepcote Valley (Nov 7) and singles at Harrow Hill and Widewater (8th).

1186 RING OUZEL *Turdus torquatus*

Regular passage migrant

Spring records were 2 on Hollingbury Camp all day (Apr 2), 1 at Woodvale Cemetery (Apr 19) and 1 at Patcham Chattri (Apr 25). In the autumn a juv at Hollingbury Camp (Sept 30), followed by 1 on the downs above Hove (Oct 14), 2 at Sheepcote (18th), and 1 there (21st), 8NW over Wildpark (Oct 24) and lastly a young male at Sheepcote (Nov 24).

1187 BLACKBIRD *Turdus merula*

Very common resident

Breeding season counts were 38 prs Bevendean Down, 73 prs Brighton Cemeteries and 128 prs Wildpark LNR. A pair nesting in Pavilion Gardens Brighton was seen feeding fledged young on Mar 5. Monthly peaks from regularly watched sites were: 65 at Preston Park in July and 72 at Sheepcote on Nov 25. A near albino was seen in gardens at Hangleton Road in Dec. Cissbury's total of 62 was their highest in 14 years of ringing.

1198 FIELDFARE *Turdus pilaris*

Common winter visitor

Early year flock counts included 145 in Stanmer Woods on Jan 23 and 800 at Golding Barn on Jan 26, then generally smaller numbers with 80 at Lower Standean on Feb 15. Reported as regular in small numbers from the Ferring Rife area. Late year records were widely reported but few large flocks noted. The first were 17NW over Brighton and 13W at Hove on Oct 12 during a heavy thrush movement. Highest counts were 100 at Golding Barn on Oct 21 and 300 at Steyning Levels on 29th. Reported from the Wildpark LNR from Oct 12-Nov 24 with double figures on only 3 dates.

1200 SONG THRUSH *Turdus philomelos*

Fairly common resident

During the cold spell there were 20 at Ferring Beach/Rife on Jan 3. Breeding counts were 1 pr Bevendean Down, 7 prs Brighton Cemeteries and 16 prs Wildpark LNR. The ringing total at Cissbury was 37 birds. The only passage noted was 50W at Hove on Oct 12.

1201 REDWING *Turdus iliacus*

Common winter visitor

Early year flocks were generally low, the peaks being 104 in Preston Park on Jan 13 and 180 at Clapham Woods on Jan 19. Unusually 1 seen feeding on Marina Beach on Jan 16. Flocks of 20-40 were not uncommon, the last birds noted on Mar 24. An unusually early bird was ringed at Cissbury on Aug 12. In the autumn a massive day movement on Oct 12 was witnessed by many members. The counts were 5970W at Hove in 4 hrs, 2540W at Worthing Beach to 11.35am, 1200 at Goring Gap from 9.45am, 1000 at Wappingthorn in 2 hrs and 700NW over Brighton in 1 hr 20 mins. More normal numbers after were 120W at Lancing Clump on Oct 19. Smaller flocks were noted elsewhere and at the Wildpark birds were present through Nov with peak 52 on 25th being the last area date.

1202 **MISTLE THRUSH** *Turdus viscivorus*

Common resident

Breeding counts were 1 pr each Bevendean Down and Brighton Cemeteries and 6 prs Wildpark. A flock of 40 was noted at Long Furlong on Aug 16 and 28 in Clapham Woods on Sept 24. Two at Sheepcote on Sept 22 were reported as unusual at this site. One noted in a Ferring garden Oct/Nov feeding on apples.

1236 **GRASSHOPPER WARBLER** *Locustella naevia*

Generally scarce passage migrant

The only spring sighting was 1 on the fringe of the Airfield on Apr 22. Records from the autumn were: 1 flushed at Steep Down on Aug 26, 1 ringed at Cissbury on Sept 6, and 3 at Sheepcote from Sept 3-16.

1243 **SEDGE WARBLER** *Acrocephalus schoenobaenus*

Fairly common summer visitor

The first was 1 at Cuckoo Corner on Apr 23 followed by 2-3 at Ferring Rife and Sompting Brooks on Apr 26. The only other spring records were 1 ringed at Cissbury on May 3 and 1 at the Adur on May 5. The only breeding season record received was 1-2 prs at Ferring Rife. An early returning bird was at Sheepcote on July 17, where the autumn total was 48, the max being 11 on Aug 8. There were 2 at the Marina on Aug 12 and 2 at Ferring Rife on Sept 10. Eight were ringed at Cissbury from Aug to Sept 19.

1251 **REED WARBLER** *Acrocephalus scirpaceus*

Fairly common summer visitor

The first were 2 on the Adur on Apr 14 with further spring records from Ferring Rife, New Salts Farm and Sompting Brooks. Unusually there were two June records, both singing, at West Worthing on 15th and the Marina on 28th. Two pairs bred at the Sanctuary. The autumn total passing through Sheepcote was 44, the max being 11 on Aug 7. At Cissbury 16 were ringed, with max 3 on Aug 16.

1262 **DARTFORD WARBLER** *Sylvia undata*

Autumn migrant, increasingly recorded in winter

The resident male remained at Hollingbury Camp all year. A second bird joined it on Oct 23 (PJW). Other birds noted were singles at Sheepcote on Jan 25 (RE), Oct 27 (ADW) and Dec 15 (PB).

1274 **LESSER WHITETHROAT** *Sylvia curruca*

Fairly common summer visitor

The first were 2 at Hill Barn GC on Apr 21, while the first at Wildpark was not until May 3. Breeding records were 1 pr Bevendean Down, Shoreham Sanctuary and Washington village; 2 prs at Goring Gap and 3 prs at Wildpark. Probably bred at Cissbury and Mill Hill. Relatively low counts in the autumn with a peak of only 7 at Wildpark on Aug 13 and only 16 ringed at Cissbury. Last birds: 1 at Goring Gap on Sept 20 and 2 at Sheepcote on Sept 29.

1275 **WHITETHROAT** *Sylvia communis*

Common summer visitor

The first arrivals were on Apr 10 at Hollingbury Camp, Lancing Clump and Toads Hole Valley. Peak spring counts were 19 at Wildpark on Apr 27 and 14 at Southwick Hill on May 17. Breeding counts were 7 prs Benfield Valley, 10 prs Bevendean Down, 6 prs Durrington, 1 pr Ferring Rife, 4 prs Goring Gap, 10 prs Sheepcote, 7 prs Toads Hole Valley, 19 prs Whitehawk Hill and 26 prs Wildpark. Some high counts in the autumn included 50 at Sheepcote on Aug 8 and 60 there on Aug 11. The total ringed at Cissbury was 126, a significant increase on 1996. The last was at Wildpark on Sept 30.

1276 **GARDEN WARBLER** *Sylvia borin*

Fairly common summer visitor

Few records were submitted for spring with just 1 on May 1 at Washington, 1 at Wildpark on 3rd and another at Goring Gap. Breeding records were 2 prs Southwick Hill, 1 pr Thunderbarrow Hill and 2 prs Wildpark. A less than average autumn passage with 5 at Sheepcote on Aug 7 and a total of only 9 at Wildpark, the last on Aug 29. There was a good increase on the ringing total at Cissbury with a total of 47, max 11 on Aug 10.

1277 **BLACKCAP** *Sylvia atricapilla*

Common summer visitor, regular in winter

Wintering birds reported during Jan/Feb totalled 17, mostly ranging from coastal area gardens, but also Steyning, Storrington and Upper Beeding. Singing males noted in Mar from 6 sites but as usual difficult to distinguish between wintering or incoming migrants. A healthy number of breeding counts were received from across the area including 11 prs at Wildpark, 2 prs Bevendean Down and Brighton Cemeteries, Patching Woods, the Sanctuary and Swandean Hospital; and single prs at Benfield Valley, Southwick, Storrington, Toads Hole Valley and Worthing. In the autumn generally low counts from Sheepcote and Wildpark, but at Cissbury 308 were ringed, the most significant numbers from Sept 6 with max 59 on 9th. Wintering birds in Nov/Dec totalled 14.

1298 **PALLAS'S WARBLER** *Phylloscopus proregulus*

Very rare visitor, mostly late autumn

One found at Sheepcote Valley with a Long-tailed Tit flock on Nov 15 (IJW) was also noted to 17th (IJW), then 22/23rd (TJW). A second was nearby at Whitehawk Hill, also with tit flock, on Nov 23 (JC, TJW). All accepted by SOS.

1300 **YELLOW-BROWED WARBLER** *Phylloscopus inornatus*

Rare autumn vagrant

An elusive bird was around the camp site at Sheepcote Valley from Nov 24-29 (ADW, IJW). Accepted by SOS. There was also 1 ringed at Cissbury on Oct 3 (PC, DK) which is awaiting acceptance by SOS.



1300A **HUME'S YELLOW-BROWED WARBLER** *Phylloscopus humei*

Very rare autumn vagrant, only recently recognised as full species

One was found on Nov 16 in East Brighton Park (LJW). Tape recordings of the calls were taken next day and confirmed by experts as Hume's. Last seen on 22nd and constitutes the 3rd Sussex record and the first for the SDOS area. Accepted by BBRC.

1308 **WOOD WARBLER** *Phylloscopus sibilatrix*

Fairly scarce passage migrant

A sprinkling of spring records commenced with singles at Wildpark on Apr 23 followed by others on 28th and 30th, and May 2. There were 2 at Woodvale Cemetery on Apr 28 and 1 on May 2 and at Cissbury singles on May 3 and 10.

1311 **CHIFFCHAFF** *Phylloscopus collybita*

Common summer visitor, with small wintering population

Wintering birds totalled only 7 during Jan/Feb, mainly from coastal gardens. Probably incoming birds were noted on Mar 1 at Goring Gap and Northbrook College with others on Mar 5 at the Harbour and New Salts Farm. On Mar 8 one seen to fly in off the sea at Southwick to land on the beach - a genuine migrant! Rather low spring counts from regularly watched areas with 8 at Cissbury on Mar 26 and 6 at Sompting Brooks on Apr 1. Breeding counts included: 1 pr Bevendean Down and Toads Hole Valley; 2 prs Southwick Hill; 3 prs Brighton Cemeteries and Goring Gap; 10 prs Wildpark. In the autumn a total of 165 from Aug 6 to Oct 31 at Wildpark and 170 ringed at Cissbury with max 30 on Sept 14. Six at Sheepcote on Nov 28 were more likely to be late departing birds, than wintering birds. Recorded in Dec from 5 sites.

1312 **WILLOW WARBLER** *Phylloscopus trochilus*

Common summer visitor and passage migrant

The first was at Ferring Rife on the early date of Mar 20, followed by 1 on Hollingdean allotments on Mar 30, then 2 the next day at Sheepcote Valley and Waterhall. Peak counts were 31 at Sheepcote (Apr 22 and 30), 25 at the Marina (Apr 19) and 12 at Toads Hole Valley (Apr 9). Breeding records were 2 prs Bevendean Down, 2-3 prs at Southwick Hill and 9 prs Wildpark. Peak counts in the autumn were 47 at Cissbury (Aug 10), 45 at Sheepcote (Aug 26), and 26 at Wildpark (Aug 11), where an overall low total was noted. The number ringed at Cissbury was 218, an increase on 1996. The last was at Cissbury on Sept 19.

1314 **GOLDCREST** *Regulus regulus*

Common resident, passage migrant and winter visitor

None were reported in Jan, then 2 at Withdean Park during Feb and migrants at Goring Gap on Mar 3. Breeding season counts were 3 prs Preston Park/Patcham and at least 4 prs in Stanmer Woods. Autumn passage commenced with a trickle of birds in Aug at Wildpark, then 10 at Sompting Abbots on Sept 26, and 12 at Sheepcote on Sept 29. Peak Oct counts were: 20 at Goring Gap on the 4th, 18 in Brighton Cemeteries and Wildpark on the 14th. At Cissbury a total of 189 were ringed with max 45 on Oct 27 and Nov 9.

1315 **FIRECREST** *Regulus ignicapillus*

Regular passage migrant in small numbers, occasionally winters

Overwintering birds were reported with 2 at Woodvale Cemetery on Jan 8, and singles at Goring Gap, Preston Park, the Sanctuary, Sompting and Wildpark. Most, if not all, were resident for the period Jan/Feb. Migrants were 1 in a Hollingdean garden (Mar 13), 1 at Sheepcote (Apr 13) and 2 (Apr 15). First birds of the autumn were 2 at Wildpark (Sept 15), followed by singles in Preston Park and a Brighton garden in Oct, and 1 at Sheepcote (Nov 23). Wintering birds were noted with 1-2 at Woodvale Cemetery from Nov 24 and in Preston Park from Dec 8. Other reports were at Beeding Hill and Sompting Abbots on Dec 12. None were ringed at Cissbury.

1335 **SPOTTED FLYCATCHER** *Muscicapa striata*

Fairly common summer visitor and passage migrant

First spring arrivals were 2 at Wildpark on May 3, followed by 1 at Goring Gap on the 6th and others at Lancing College, Lancing Clump, New Erringham Farm and Sheepcote Valley up to May 26. Breeding noted with 1 pr Highdown Hill, 1 pr Washington Warren and 2 prs Wiston Estate. Autumn passage started with 3 at Worthing Hill Barn on Aug 25 and 3 at Sheepcote the following day. A total of 40 were logged in Sept with peaks of 7 at Wildpark on the 18th, 5 at Goring Gap on the 20th and 4 at Steyning on the 6th. Three were ringed at Cissbury during late Aug. The last bird was at Wildpark on Sept 30.

1349 **PIED FLYCATCHER** *Ficedula hypoleuca*

Regular passage migrant

The first was a male at Lancing Clump on Apr 22 followed by 2 further sightings there in May. On May 3 there was 1 pr singing and displaying at Wildpark and 3 at Sheepcote Valley. The only summer record was 1 at Patcham on July 29. Autumn passage commenced with 3 ringed at Cissbury on Aug 10, then 1 at Sheepcote on Aug 16, 1 in a Brighton garden the next day and another at Park Crescent, Brighton on the 19th. Others were 1 at Southwick Hill (Aug 24), 1 at Golding Barn (Sept 3), 2 at Wildpark (Sept 6), 1 at Storrington (Sept 17-20), 1 at Sompting Abbots and Hollingbury GC (Sept 26) and the last at the Airfield (Sept 28).

1437 **LONG-TAILED TIT** *Aegithalos caudatus*

Common resident

In Jan flocks included 10 in Goring Wood, 10 at Woods Mill and 9 nr Cuckoo Corner. Up to 7 were noted coming to a Hangleton garden to feed on a football, and 4 were feeding on peanuts in Feb in a Hove garden. Breeding records were: 1 pr at Bevendean Down, Coombes, Findon Valley and Withdean Woods; 2 prs Brighton Cemeteries and 9 prs Wildpark. A flock of 16 were seen feeding on blackfly in Findon Valley on Aug 1, and 22 were noted at Ferring Rife on Aug 18. A flock nr Brighton Racecourse on Oct 26 included 2 birds of the white-headed subsp and a flock of 12 at Sheepcote on Nov 15/16 were probably both migrant flocks. The Cissbury ringing total was 23, a decrease from 1996.

1440 **MARSH TIT** *Parus palustris*

Fairly uncommon resident

Breeding records were 2-3 pairs at Cissbury and 1 pairr at Chanctonbury. Others were

noted at Patching Woods in Apr and Warren Hill in May. Five birds were ringed at Cissbury.

1442 **WILLOW TIT** *Parus montanus*

Fairly uncommon resident

The only records received were 1 at Michelgrove Patching (Mar 8), 3 at Ferring Rife (Apr 10) and 1 at Southwick Hill (Sept 7).

1454 **CRESTED TIT** *Parus cristatus*

In the UK, confined to Scotland, but widespread in Europe

An amazing record of 1 in a Worthing garden on May 10 has been accepted by SOS. Unfortunately no other details are to hand for this first record for the area and Sussex.

1461 **COAL TIT** *Parus ater*

Fairly common resident

Few records were received. Probably bred at Washington Warren, whilst others were noted during the breeding season from Patching and Wappingthorn Woods. Sightings from gardens were from Ferring and Upper Beeding. Migrant birds were noted at Hollingbury Camp on Oct 1 and 24.

1462 **BLUE TIT** *Parus caeruleus*

Abundant resident

Breeding counts were 15 prs Bevendean Down, 28 prs Brighton Cemeteries, 5 prs Hove Park (in nestboxes, fledging 30 young), and 62 prs Wildpark. The total ringed at Cissbury was 67.

1464 **GREAT TIT** *Parus major*

Very common resident

Breeding counts were 11 prs Bevendean Down, 11 prs Brighton Cemeteries, 2 prs in Hove Park nestboxes, and 38 prs Wildpark. The total ringed at Cissbury was 31.

1479 **NUTHATCH** *Sitta europaea*

Uncommon resident

Records were received from Cissbury, Michelgrove, Patching Woods, Storrington, Wappingthorn, Warren Hill and Woods Mill. Additionally, urban sightings were at Preston Park, Brighton on 2 dates in Feb.

1486 **TREECREEPER** *Certhia familiaris*

Uncommon resident

The only records received were from Goring Gap with sightings on 4 dates from Jan 4 to Mar 22, 1 at Strivens Reedbed on Jan 3, 1 carrying food in Preston Park, Brighton on June 1, and 1 ringed at Cissbury on Aug 17.

1515 **RED-BACKED SHRIKE** *Lanius collurio*

Rare vagrant, formerly bred.

The only record was an ad female on May 31 at Sheepecote Valley (IJW, ADW).

1539 **JAY** *Garrulus glandarius*

Fairly common resident and winter visitor

Three noted at Goring Gap on Jan 24 staying into early Mar. Breeding counts were 1 pr Withdean Woods and Woodvale Cemetery, and 2 prs Wildpark. Also reported from the Storrington/Washington area and from a Hangleton garden. A possible migrant was at Sheepcote on Nov 2.

1549 **MAGPIE** *Pica pica*

Very common resident

Breeding season counts were: 7 prs Bevendean Down, 10 prs Brighton Cemeteries and 40 prs Wildpark. Three fledglings were ringed from a nest at Beeding Hill in May. A large roost count of 230 was logged at Wildpark on Nov 13.

1560 **JACKDAW** *Corvus monedula*

Common resident

Breeding records were: 4 prs urban Brighton, 3 prs urban Hove and 10 prs Sompting Abbots School. Flock counts were: 75 nr Woods Mill (Jan 7), 28 at Ferring Rife (Oct 21) and 40 at Wildpark (Nov 7 and Dec 29).

1563 **ROOK** *Corvus frugilegus*

Common resident

Undoubtedly under-recorded with only 1 rookery count submitted - 40 prs at Wyckham Wood. Feeding flocks were 30 at Ferring Rife on Jan 1, and 26 at Wildpark on Dec 29.

1567 **CARRION CROW** *Corvus corone*

Common resident

Breeding counts were: 3 prs Bevendean Down, 5 prs Brighton Cemeteries, 24 prs Hove to Shoreham, and 15 prs Wildpark. Noted on a seawatch from the Marina with 6W on Apr 12. Feeding flock counts were: 180 at Wildpark (Jan 14), 73 at Goring Gap (May 3), 55 at Foredown Tower (Aug 10), 60 at Ferring Rife (Aug 7) and 120 at Wildpark (Nov 7). Additionally 27 were feeding on Brighton beach (Nov 17).

582 **STARLING** *Sturnus vulgaris*

Abundant resident and winter visitor

Breeding counts were: 16 prs Bevendean Down, 28 prs Brighton Cemeteries and 39 prs Wildpark. Attempts to count the winter roost at the West Pier were 18,000 (Mar 21) and 50,000 (Dec 14). Feeding counts were from the Airfield with 700 in late Aug increasing to 2,000 (Nov 11). A bird with an abnormally long bill was seen at Old Steyne, Brighton during Apr/May.

1591 **HOUSE SPARROW** *Passer domesticus*

Very common resident

Breeding counts were: 11 prs Bevendean Down and 10 prs Brighton Cemeteries. Post breeding flocks were 120 at Hollingdean allotments on Aug 1, and 90 still there on Aug 11; 300 at New Salts Farm on Aug 3-4; and 75 at Mill Hill on Aug 10. A roost count of 300 was at Southlands Hospital on Oct 1.

1598 **TREE SPARROW** *Passer montanus*

Scarce resident

Reported as absent from the Stretham Manor area in Jan-Mar, where in previous years a small flock resided. Noted from the Lower Standean area in Jan/Feb with max 20 (Feb 5). Migrants were 5E at Sheepcote Valley (Oct 23).

1636 **CHAFFINCH** *Fringilla coelebs*

Very common resident

Breeding counts were: 13 prs Bevendean Down, 9 prs Brighton Cemeteries and 40 prs Wildpark. There were 23 ringed at Cissbury and the only late year flock of note was 42 at Wildpark on Nov 14.

1638 **BRAMBLING** *Fringilla montifringilla*

Regular passage migrant

Early year records were 1 at Lower Standean on Jan 20 and 1m feeding in a Storrington garden on Mar 7. Autumn passage commenced with 14NW over Brighton on Oct 12, then 13 over Wildpark on the 15th. The total at Wildpark to Nov 4 was 42, and at Sheepcote Valley to Nov 18 the total was 13. Other counts in Oct of 1-2 birds were from Cissbury on 2 dates, Goring, Lancing Clump and Sompting Brooks.

1640 **SERIN** *Serinus serinus*

Rare passage migrant

A flyover reported from the Marina on Apr 7, but not clear if submitted to SOS.

1649 **GREENFINCH** *Carduelis chloris*

Very common resident

Breeding counts were: 9 prs Bevendean Down, 25 prs Brighton Cemeteries and 29 prs Wildpark. Large flocks gathered along the Shoreham Beach area with 100 (Sept 20), increasing to 150 (Oct 19) and max 250 (Nov 16). In addition there were 30 at New Salts Farm (Sept 20), 35 at Sompting (Sept 26) and 30 in a West Worthing garden (Dec 6).

1653 **GOLDFINCH** *Carduelis carduelis*

Fairly common resident

Few early year flocks were noted, the max being 40 at the Harbour on Feb 16. Breeding counts were: 1 pr Brighton Cemeteries and 4 prs Wildpark. There was an estimated 500 at Newtimber Hill on Sept 14. Passage counts from Worthing Beach totalled 1,232, with max 525E on Oct 20. Other counts were noted on Oct 18 with 100E at the Marina and 150 at Goring Beach Green. Smaller flocks were noted in Oct at Anchor Bottom, Beeding Hill and Wildpark.

1654 **SISKIN** *Carduelis spinus*

Fairly common passage migrant and winter visitor

Singles were noted Jan/Feb from Broadwater and Storrington, and the peak count was 24 at Woods Mill on Feb 25. Spring passage was poor with just 5 at Steyning on Mar 5 and 12 over Hollingbury Camp on Mar 29. A sick juv was ringed at Cissbury on June 28. Autumn passage commenced on Sept 6 with small numbers at Goring and the Camp. A

bigger movement occurred on Sept 11 with 151 at Sheepcote, then 71 at Cissbury on the 14th. This was still not an indication of what was to come, the massive movement was the largest seen in the SDOS area and was logged as follows:

September	19	20	21	22	23	24	28	29
Cissbury	189	-	482	50	-	70	77	-
Hollingbury	30	20	-	-	90	-	-	116
Goring	-	60	100	-	-	-	-	-
Sheepcote	1035	-	-	682	-	427	-	211
Widewater	-	223	400	-	-	-	-	-
Elsewhere	-	295	92	-	-	18	55	-

The day total of 1,035 at Sheepcote well surpassed the previous high total at Goring Gap in Sept 1991. Passage continued into Oct and included 70E at Goring on 15th, 100E at the Marina and 42 at the Sanctuary on 22nd, 41 at Hollingbury Camp on 23rd, 63 at Cissbury on 26th and 98 at Sheepcote on 30th. Surprisingly only 4 were ringed at Cissbury during this remarkable period. The last passage birds were at Hollingbury Camp on Nov 4. Two were seen in a Storrington garden on Dec 29.

1660 LINNET *Carduelis cannabina*

Locally common resident and passage migrant

Few were noted early year with 40 at the Airfield on Feb 21 the only high count. Passage was noted at Worthing Beach with 36E on Apr 7, 44E on the 8th and 51E on the 9th. Breeding season counts were 4 prs Bevendean Down, 2 prs Goring Gap and Southwick Hill, 8 prs Toads Hole Valley, 18 prs Whitehawk Hill and 9 prs Wildpark. Peak numbers in the autumn were 110 at Benfield Hill (Sept 7), 200 at Golding Barn (Sept 22), 200 at Steep Down (Oct 22), 140 at Sheepcote (Oct 3) and 80 at Wildpark (Nov 4). The Oct Worthing Beach total was 228. Seven were ringed at Cissbury. Late year counts were 45 at the Airfield (Nov 15) and 60 at Henfield Levels (Dec 15).

1662 TWITE *Carduelis flavirostris*

Rare winter visitor

Two seen on both sides of the Adur below the Tollbridge between Jan 6-10. Presumably the same birds seen nearer the houseboats between Jan 24 - Feb 11. Then 3 were at Sheepcote on Oct 26 and 1 flew in off the sea at the Marina on Nov 12.

1663 REDPOLL *Carduelis flammea*

Scarce passage migrant and winter visitor

With Siskins in record numbers it was disappointing to see much lower counts of Redpoll. There were no early year records. In the autumn totals at Cissbury were: 125 between Sept 14 - Nov 2, with max 67 on Sept 28; at Sheepcote the total was 80, max 18 on Nov 6; and at Wildpark a total of 147 between Sept 29 - Nov 11, max 32 on Sept 29 and Oct 23. Very few were reported elsewhere. Five were ringed at Cissbury on Oct 26.

1666 **COMMON CROSSBILL** *Loxia curvirostra*

Scarce visitor, more common in eruption years

First noted with 18 NE over the Sanctuary on June 5. then followed numerous reports, the monthly totals shown as follows:

Jun	Jul	Aug	Sep	Oct	Nov
22	71	34	2	30	6

The largest counts were 18 at Cissbury on July 13 and 18 at the same site on Oct 26. The last were 6E at Hove on Nov 1.

1710 **BULLFINCH** *Pyrrula pyrrula*

Fairly common resident

Breeding counts were: 2 prs Bevendean Down, 1 pr Brighton Cemeteries and Washington village and 4 prs Wildpark. Also noted in the breeding season from Ferring, Storrington and Woods Mill. At Cissbury a total of 47 were ringed, the highest total in 14 years. At Sheepcote, where the species is reported as rare, 6 were noted at end of Oct, 5 on Nov 14 and assumed 'resident' into Dec. Two were at Goring Gap on Dec 25.

1850 **SNOW BUNTING** *Plectrophenax nivalis*

Scarce passage migrant and winter visitor

A poor year with just 1 in off the sea at the Marina on Jan 5 (IJW) and 1E at Goring Beach on Nov 1 (DIS).

1857 **YELLOWHAMMER** *Emberiza citrinella*

Locally common resident

Early year counts were 32 at Toads Hole Valley in Jan, and 100 at Lower Standean on Feb 5. Breeding counts were: 1 pr Bevendean Down, 3 prs Southwick Hill, 1 pr Thunderbarrow Hill, 2 prs Toads Hole Valley and Whitehawk Hill, and 11 prs Wildpark. One was reported in off the sea at the Marina on Oct 14. Four were ringed at Cissbury between Aug - Oct, the first since 1991.

1877 **REED BUNTING** *Emberiza schoeniclus*

Locally common resident

Early year records were 20 at Cuckoo Corner (Jan 2), 15 on Lower Adur (Jan 5) and unusually for the time of year, 1 on Hollingbury Camp (Jan 26). There were 1-4 through Jan-Mar at Ferring Rife where they probably bred. The only other breeding record was 3-4 prs in the vicinity of Cuckoo Corner. Passage birds were singles on 4 dates in Oct at Hollingbury Camp and max 10 at Sheepcote (Oct 26).

1882 **CORN BUNTING** *Miliaria calandra*

Locally common on downland

Flock counts early year included 100 at Cuckoo Corner (Jan 2), 70 at the Airfield roost (Jan 15 and Feb 25), and max 112 at Lower Standean (Jan 23). Breeding counts were: 1 pr Bevendean Down, 6 prs Lancing Clump-Steep Down, and 2 prs at the Sanctuary and Sheepcote. Singing males also noted from Benfield Hill, Chanctonbury and other downland sites. Autumn flocks were at Kings Barn Levels (Sept 29), 26W over the Sanctuary (Aug 23) and 20 Ditchling Beacon (Oct 24). There were also 60 at Harrow Hill (Dec 13).

ESCAPES AND FERAL BIRDS IN 1997

CHIOLE WIGEON Jan 15 at New Salts Farm; and at Beeding Brooks on May 11.

YELLOW PEACH-FACED LOVEBIRD One on Feb 10 in a Shoreham garden.

MUSCOVY DUCK Three on Feb 22 at the Fort and at the Harbour on Apr 14.

RED-TAILED HAWK Feb 26 at Henfield Levels.

BARNACLE GOOSE 4E on Apr 20 at the Marina.

BAR-HEADED GOOSE Dec12 at Adur Levels.

UPDATE OF RARITY RECORDS

Recent British Birds Rarities Committee (BBRC) decisions and confirmation of records by the Sussex Ornithological Society are listed below.

1961

0604 **IVORY GULL** Portobello Brighton on Nov 19. Now considered inadequately documented. This record was mentioned in *Birds of Shoreham 1988* although outside the recording area.

1969

0606 **CASPIAN TERN** Worthing Apr 30. Rejected (inadequately documented, BBRC)

1971

0606 **CASPIAN TERN** Worthing May 6. As above thus leaving just a single record of this species in the area at Shoreham in 1981.

1992

1015 **WATER PIPIT** Widewater Mar 28. Record withdrawn by observer.

1996 - All the following records have been accepted:

0158 **PINK-FOOTED GOOSE** Hollingbury Dec 11.

0239 **RED KITE** Hammerpot Aug 10 and Harrow Hill Aug 13.

0477 **KENTISH PLOVER** Widewater May 19 and Worthing Jul 17.

0565 **GREY PHALAROPE** Brooklands Oct 7-9, the Marina Nov 7-14 and Nov 19-20
Note revised dates.

0599 **GLAUCOUS GULL** The Marina May 1 and Tollbridge on Sept 28.

0606 **CASPIAN TERN** Palace Pier May 20.

0798 **ALPINE SWIFT** Beeding May 19-20 (ADW, IJW et al).

1300 **YELLOW-BROWED WARBLER** Goring Gap Oct 5.

1508 **GOLDEN ORIOLE** Goring Gap, female on May 25 (RJF).

1515 **RED-BACKED SHRIKE** Sompting Aug 18.

ADDITIONS TO 1996 REPORT

The following are late records from the Hollingbury Camp area:

- 0159 **WHITE-FRONTED GOOSE** *Anser albifrons* Flock of 27E over the Camp on Jan 9 (GLC).
- 0548 **GREENSHANK** *Tringa nebularia* 1W over the Camp on Aug 16.
- 0795 **SWIFT** *Apus apus* 1 at Hollingdean on the late date of Sept 23.
- 1121 **BLACK REDSTART** *Phoenicurus ochruros* 1 on Roedale allotments (Jan - Feb); 1m Hollingdean Park (Apr 5); 1 on Camp (Sept 29); 1 on allotments during Oct.
- 1186 **RING OUZEL** *Turdus torquatus* On the Camp in Sept: 2 (19th), 1 (22nd), and 4 (23rd).
- 1201 **REDWING** *Turdus iliacus* Peak count was 400 on Jan 22.
- 1243 **SEDGE WARBLER** *Acrocephalus schoenobaenus* 1 on the Camp on the late date of Sept 26.
- 1251 **REED WARBLER** *Acrocephalus scirpaceus* 1 on the Camp on the late date of Sept 24.
- 1315 **FIRECREST** *Regulus ignicapillus* 2 (Mar 23), 1 (Sept 21) and 2/3 on dates in Oct.
- 1349 **PIED FLYCATCHER** *Ficedula hypoleuca* 2m on ski slope on May 23.
- 1442 **WILLOW TIT** *Parus montanus* 1 in Wild Park on Aug 7.
- 1539 **JAY** *Garrulus glandarius* Probable migrants included 16 (Oct 2) and 17 (Oct 12).
- 1638 **BRAMBLING** *Fringilla montifringilla* 2m on Roedale allotments on Jan 1. Autumn total was 17 between Sept 23 - Nov16.
- 1666 **CROSSBILL** *Loxia curvirostra* 4E on Aug 2 and 2E on Aug 14.

NOTE FOR NEWER BIRDWATCHERS

The table on the following page shows the first and last date when each regular migrant species was recorded in the SDOS area. Be aware that often a single or a few individuals will appear days or even weeks earlier than the majority of a species and similarly the odd individual may linger long after most have left. So do not be too disappointed if you see your first Swallow or Wheatear considerably later than the first date shown in the table. In the case of many species, there tends to be a peak few days when the bulk of the population either arrives or passes through. The timing of this peak may vary from year to year dependant mainly on weather conditions. Also, if the weather is favourable many passage migrants will fly straight over without stopping, especially in spring.

Checking the species accounts in several recent SDOS Annual Reports should give a good indication of when any migrant species is most likely to be seen and will also show whether the species is a breeding summer visitor or just a passage migrant in our area.

ARRIVAL AND DEPARTURE OF MIGRANTS IN 1997

SPECIES	ARRIVAL	DEPARTURE
Hobby	April 20 Goring.....	Sep 30..... Airfield/Sheepcote
Whimbrel	Mar 11 Marina.....	Aug 26 Lancing Clump
Common S'piper	May 15 Marina.....	Oct 15 Worthing
Sandwich Tern.....	Mar 9 Marina.....	Nov 20..... Marina
'Commic' Tern	April 7 Marina/Worthing	Oct 31 Worthing
Little Tern	Apr 22 Worthing.....	Sep 29..... Harbour
Black Tern	May 3 3 sites	Sep 12..... Marina
Turtle Dove	Apr 26 Sompting Brooks	Sep 19..... Steyning Roundhill
Cuckoo.....	May 1 Washington	Aug 16 Widewater
Swift.....	May 1 Broadwater	Nov 6..... Widewater
Sand Martin	Mar 23 Marina.....	Sep 21 New Salts Farm
Swallow.....	Apr 4..... Hollingbury Camp	Nov 20 Brighton
House Martin	Apr 17 Steyning.....	Nov 29..... Ferring
Tree Pipit	Apr 10..... Hollingbury Camp	Sep 23 Hollingbury Camp
Yellow Wagtail	Apr 8..... Worthing.....	Oct 13 Harbour
Nightingale.....	May 2..... Beeding CW	Sep 21..... Cissbury
Redstart	Apr 11 Steyning.....	Oct 28 Cissbury
Whinchat	Apr 24 Airfield	Oct 19 Sompting Brooks
Wheatear	Mar 3 Steyning Roundhill	Nov 8 Harrow Hill/W'water
Ring Ouzel.....	Apr 2..... Hollingbury Camp	Nov 24..... Sheepcote
G'hopper Warbler	Apr 22..... Airfield	Sep 16..... Sheepcote
Sedge Warbler.....	Apr 23 Cuckoo Corner	Sep 19..... Cissbury
Reed Warbler	Apr 14 Adur.....	Sep 27..... Cissbury
Lesser Whitethroat	Apr 21 Hill Barn GC	Sep 29..... Sheepcote
Whitethroat	Apr 10..... 3 sites	Sep 30..... Wildpark
Garden Warbler	May 1 Washington	Sep 19..... Cissbury
Willow Warbler	Mar 20 Ferring Rife.....	Sep 19..... Cissbury
Spotted Flycatcher	May 3 Wildpark	Sep 30 Wildpark
Pied Flycatcher	Apr 22 Lancing Clump	Sep 28..... Airfield

This feature has been compiled from records submitted by local observers.
Please also see note on previous page.

RINGING REPORT FOR 1997

During 1997 a total of 2741 birds were ringed in the area. Although a lower total than many recent years this represents a 10% increase on the 1996 total. As usual most were ringed by mist-netting fledged birds but 262 (9.6%) were ringed as nestlings and these included 41 Blackbirds, 24 Swallows, 17 Robins and 12 Song Thrushes as well as a large number of box-nesting tits. Over 80% of the area total was caught by the Steyning Ringing Group who ringed 2,232 at their usual three sites. The regular trapping on the north facing slope of Cissbury by Brian & Phil Clay and Val Bentley contributed 1,594 new birds including 5 Redstarts, 3 Pied Flycatchers and a good number of autumn warblers and Goldcrests. A good catch of Reed Warblers, 2 Kingfishers and 3 Nightingales were the notable features from the total of 545 birds ringed at Phil Clay's Mumbles reserve at Steyning. The

group's totals were completed by 93 birds ringed at Wiston. The number of birds at the Sanctuary was again low and testament to the poor total of 234 birds ringed there. John Newnham also added just 10 birds ringed in his urban Worthing garden. The grand total was reached by Dr Barrie Watson's 265 which included many nestlings found by John and Charlie Holt.

The Table below shows the numbers of the 49 species ringed. A reversal of the trends from 1996 reveal about 30 species showing increases whilst 20 were ringed in fewer numbers. The most significant changes were House Martin (-308), Goldcrest (+183) and Willow Warbler (+112). Most of the common warblers showed small increases whilst the number of finches ringed continues to decline. The Yellow-browed Warbler, trapped at Cissbury on 3rd October, was the most exciting bird ringed during the year.

Table - List of species ringed

Sparrowhawk.....	4	Grasshopper Warbler	1	Great Tit.....	101
Kestrel.....	1	Sedge Warbler.....	12	Treecreeper	6
Woodpigeon	2	Reed Warbler.....	97	Jay	2
Collared Dove.....	1	Lesser Whitethroat.....	25	Magpie	3
Kingfisher	2	Whitethroat	133	Starling.....	44
Green Woodpecker	1	Garden Warbler	56	House Sparrow	2
Gt-spotted W'pecker	2	Blackcap	349	Chaffinch	45
Swallow	25	Yellow-Browed Warbler.....	1	Greenfinch.....	12
Wren	59	Chiffchaff	246	Goldfinch	22
Dunnock.....	87	Willow Warbler	291	Siskin.....	6
Robin.....	136	Goldcrest	213	Linnet.....	7
Nightingale	5	Spotted Flycatcher	3	Redpoll.....	5
Redstart.....	5	Pied Flycatcher	3	Bullfinch.....	68
Stonechat	1	Long-tailed Tit	58	Yellowhammer	4
Blackbird	160	Marsh Tit.....	6	Reed Bunting	2
Song Thrush	75	Willow Tit	1		
Redwing	2	Blue Tit.....	346	TOTAL	2741

Recoveries and Controls

The following is a selection of the more interesting movements reported during the year, several refer to movements from previous years.

1) Black-headed Gull:- There were no local gull cannon-netting sessions in 1997 but the recoveries from the busy days on the local beaches and refuse tips still keep coming. Amongst the reported movements were two field sightings of Black-headed Gulls bearing rings from Lithuania and Poland. A total of 33 recoveries of Black-headed gulls ringed in Sussex were reported in 1997.

Of the UK total of 11, six were from Sussex and there was one each from Kent, Hampshire, Suffolk, Norfolk and Cheshire. Of the 22 foreign recoveries, five were from Finland, four from Germany, three from the Netherlands and Denmark, two from Estonia and Sweden and one each from Poland, Lithuania and the former USSR.

Among the recoveries reported for Black-headed Gulls during 1997 no fewer than six have been recovered before. Three were in different years at the same site but three involved several sites and these are detailed in the Table below.

Recoveries of Black-headed Gulls ringed in Sussex

Ring no	Date	Age etc	Sites	Co-ordinates	Movements etc
EN31990	5/2/86	6	Sompting Tip, Worthing	50 51'N 0 20'W	
	2/4/87	control	Copenhagen, Denmark	55 42'N 12 35'E	1012km 58' 421 days
	10/4/96	field record	Lemland, Finland	60 00'N 19 59'E	1630km 51' 3717 days
EP01903	9/12/87	4	Sompting Tip, Worthing	50 51'N 0 20'W	
	16/3/91	field rec	Klaipeda, Lithuania	55 47'N 21 7'E	1524km 69' 1193 days
	4/7/96	dead	Suurlaht, Saare, Estonia	58 15'N 22 27'E	1678km 61' 3130 days
EN32725	19/2/86	6	Sompting Tip, Worthing	50 51'N 0 20'W	
	30/3/87	field record	Damhussoen, Copenhagen	55 41'N 12 29'E	1006km 58' 404 days
	29/5/91	control	Saltholm, Oresund Denmk	55 38'N 12 46'E	1019km 59' 1925 days
	6/5/95	field record	Enghaveparken, Copenhagen	55 40'N 12 33'E	
	25/7/96	field record	Frihavnen, Copenhagen.	55 43'N 12 36'E	1014km 58' 3809 days

2) Common Gull:- There were also two recoveries of Common Gulls ringed at Sompting refuse tip and reported during the year, neither add to the movements described in the *Sussex Bird Report 1993 (SxBR 46:120-122)*.

Ring'd as ad.	7/3/84	field obs	17/8/87	Copenhagen, Denmark	1014km 58' 4546 days
Ring'd as juv.	23/11/83	field obs	30/6/97	Langenwerder Rostock GDR	876km 66' 4968 days

3) Kestrel:- Although late in reporting, this recovery provides an insight into the speed which young Kestrels disperse. This is the fourth Kestrel ringed as a nestling in the Netherlands to be found during the first year in Sussex but the first from this area.

Ring'd 12/7/95	nestling (brood 8)	Zuid-Holland, Neth'lands	58 1'N 4 28'E	
8/8/95	Freshly dead	Worthing Golf Course	50 53'N 0 23'W, 359km	249deg 27 days

4) House Martin:- During the autumn this species, particularly juveniles, are attracted to tape-lures and can therefore be trapped in large numbers. Although some from the area have been recovered in France, the majority, like the following, are movements within Britain.

Ring'd 6/7/96	nestling (brood 4)	Bilton in Ainsty, Yorkshire	53 57'N 1 16'W	
14/9/96	controlled	Cissbury	50 52'N 0 23'W, 348km,	170deg, 70days

5) Robin:- There have been a few autumn movements from this area, usually in an eastward direction, but this recovery does not match two previous movements to Denmark and one to the Netherlands.

Ringed 20/6/96	juvenile	Mumbles, Steyning	50 54'N 0 19'W
17/8/96	controlled	Icklesham, Sussex	50 54'N 0 40'E, 69km, 88deg, 58 days

6) Reed Warbler:- The following is typical recovery reported for this species, the map on page 107 *The Birds of Shoreham* shows a marked cluster of recoveries from areas to our west; a plot of recent recoveries would also now show a cluster of movements (8 since 1991) between this area and Icklesham in East Sussex.

Ringed 2/9/96	first year	Thorney Island	50 50'N 0 56'W
13/7/97	control breeding	Shoreham-by-Sea	50 50'N 0 17'W, 46km 90deg, 320 days

7) Garden Warbler:- Previous distant movements of this often elusive species come from Powys, Avon, Gloucestershire and Yorkshire. This more local movement adds yet another species which has been recorded moving to or from Icklesham.

Ringed 2/8/93	first year	Icklesham, Sussex	50 54'N 0 40'E
12/8/95	controlled	Mumbles, Steyning	50 54'N 0 19'W, 69km, 268deg, 740 days

8) Blackcap:- This species has been the passerine with most reported movements in recent years; this single British recovery is therefore a poor showing.

Ringed 7/9/96	juvenile	Shifnal, Shropshire	52 39'N 2 22'W
6/10/96	controlled (male)	Cissbury	50 52'N 0 23'W, 241km, 145deg, 29days

9) Chiffchaff:- Following a run of distant African recoveries this year's sole recovery is more mundane.

Ringed 22/9/96	juvenile	Shoreham-by-Sea	50 50'N 0 17'W
31/5/97	control breeding	Wilstone Reservoir, Herts	51 48'N 0 42'W, 111km, 345deg, 251 days

10) Willow Warbler:- Although this area has produced movements from Scotland and to northern Spain, none are as interesting as the second recovery reported this year. I believe this is the first Willow Warbler controlled in Sussex bearing a foreign ring, its speed of movement south is noteworthy.

Ringed 2/9/95	first year	Cissbury	50 52'N 0 23'W
19/4/97	controlled	Portland Bill, Dorset	50 31'N 2 27'W, 151km, 255deg, 595days
Ringed 7/9/96	first year	Nolsoy, Faeroes	61 65'N 6 38'W
14/9/96	controlled	Cissbury	50 52'N 0 23'W, 1292km, 163deg, 7days

11) Blue Tit:- In most years small movements of this usually sedentary species are reported, the following is the longest movement for 1997.

Ringed 27/5/94	nestling (brood 9)	Horsted Keynes Station, Sussex	51 03'N 0 03'W
16/11/94	control female	Mumbles, Steyning	50 54'N 0 19'W, 26km, 225deg, 173days

Like previous years there were several local recoveries and many birds were retrapped in successive years. All help to build information on movements and population sizes.

John Newnham

STEYNING RINGING GROUP REPORT 1997

Management

The year commenced as the previous had finished - with more clearing, felling and burning. Management work at Cissbury will always be on-going, but the basic five year plan started in 1993 is coming to a close, with the bulk of the felling of Ash and Sycamore being completed along with the pollarding and thinning out of the remainder of the scrub. A good ground layer of flora is beginning to establish itself in the areas completely cleared, with Ground Violets, Wild Strawberry and other plants. A total of 13 man-days effort was put into managing the site, making about 250 hours work. In addition to this work, the Mumbles also received some 100 hours effort with extra tasks needed in preparation for the "Open Day".

Cissbury

One of the factors that prompted the introduction of a radical management plan for the site was the reduction in juvenile migrant bird numbers as previously reported*. To bring the figures up to date, as can be seen in the table, there has been an upturn in "migrant" juveniles on the site but a downturn for resident adults. The table shows selected species.

Although the adult contingent of residents present showed an average decline of around 33%, the numbers of juveniles present were up on previous years. The numbers present earlier in the year were generally up two or four fold. This could reflect earlier breeding and earlier juvenile dispersal, but as the table shows, many had mixed fortunes. The totals of each species were mostly to pre 1993 levels, with only Lesser Whitethroat

declining, although it is thought that this species may be suffering on migration.

Autumn migration kicked off with birds such as Reed and Sedge Warblers, which do not breed on the site, turning up in early August with peaks of Willow Warblers (47) on the 10th together with 16 Whitethroats, 11 Garden Warblers and 2 Pied Flycatchers. A new bird for the site, a Stonechat, was caught on the 12th and a Redstart on the 16th. Four more Redstarts were ringed in September, and the only Grasshopper Warbler of the year turned up on the 6th when 3 more Sedge Warbler were ringed as well as another Sedge on the 19th. Blackcaps were plentiful, with peaks of 59 ringed on the 6th and 44 on the 12th. Chiffchaffs peaked on the 14th with 30 ringed then 25 on the 27th and 21 on the 28th. The last two dates also produced totals 45 and 28 Goldcrests respectively, these birds continued to come through in good numbers into November with a grand total of 199 birds ringed. The bird of the year award went to a dull but pleasing Yellow-browed Warbler caught on 3 October. Yellowhammers appeared on the ringing totals list for the first time in a number of years with a grand total of 4 for the year.

Views from the Ringing Table

During the ringing sessions, 38 mornings and one evening in all, many sightings of passing birds are recorded. The first notes were on 3 May, when a Wood Warbler was singing in the Sycamores, a Turtle Dove was calling, and 20 Swifts arrived at 09:00 hrs. Quail were in voice on 23 June and on 13 July a Greenshank flew over as did 18 Crossbills. Five more of the latter

YEAR	1992		1993		1994		1995		1996		1997	
	Ad	Juv	Ad	Juv	Ad	Juv	Ad	Juv	Ad	Juv	Ad	Juv
Residents												
Wren	2	17	2	31	6	17	10	17	6	16	-	6
Dunnock	13	21	14	33	16	20	27	15	21	9	14	17
Robin	3	21	4	14	9	15	8	11	7	10	4	17
Blackbird	12	7	11	4	10	4	17	4	17	11	13	19
TOTALS	30	66	31	82	41	56	62	47	51	46	31	59
Migrants												
Lesser White	9	6	12	7	4	-	9	7	8	5	8	2
Whitethroat	9	56	5	19	5	13	16	26	21	16	18	31
Garden Warbler	4	14	6	2	-	4	6	7	7	5	14	9
Blackcap	8	38	14	25	16	15	17	15	10	11	21	33
Chiffchaff	2	4	1	2	1	-	-	10	3	5	2	7
Willow Warbler	8	64	14	41	6	17	4	34	9	46	9	47
TOTALS	40	182	52	96	32	49	52	99	58	88	72	129

Constant Effort Ringing Summary for 1992 to 1997 - Commonest Species

passed on 2 August when up to 100 Swifts gathered for their return migration. A Marsh Harrier was viewed over Stump Bottom on 10 August when a Tree Pipit and Nightingale were present. Four more Crossbills flew over on the 29th as did another Tree Pipit. A Peregrine was observed on the 31st when 10 Siskins flew over, the start of what was to become a remarkable autumn passage with a virtually continuous movement eastward. Small numbers were noted each session until 2nd September when 61 passed over, then 190 on the 19th when a Hobby was

present, some 10 Redpolls and a Grey Wagtail. A further 390 went by on the 21st when another sighting of a Hobby occurred. Redpolls equalled Siskins in the fly-past of 28 September with 76 of each moving east. A few more flew by on 3 October when a Peregrine, that had also been seen the previous day, was again present. With these Siskin and Redpoll numbers noted in a few hours on ringing days, what was the total in all?

A Brambling was heard on 19 October when 22 of the other incoming visitors, Redwing, were also present. These were

soon followed by the first 10 Fieldfares on the 25th. Siskins were again flying by on 26 October with 63 noted plus 2 Brambling, 18 Crossbills and a Buzzard. The first winter Woodcock was flushed on 31 October.

The Mumbles

A total of 545 birds was ringed at the Mumbles site at Steyning in 1997. These included Kingfisher, Nightingale (2), Great Spotted Woodpecker (2) and Treecreeper all of which probably nested. Water Rails were observed with 2 young. A male Sparrowhawk was ringed on 11 September and a Kestrel on the 20th. An Open Day was held on 19 July when members of the Ringing Group, Brian Clay, Val Bentley, Dave King and myself, demonstrated bird ringing and gave guided tours. Twenty three new birds were ringed and eleven already bearing rings were retrapped. Species trapped included Garden Warbler, Lesser Whitethroat and

Nightingale. The highlight of the day occurred when we were packing up - a Hobby flew over!

And finally...

The year ended as it had begun with a three day conservation bash at Cissbury. Chain sawing with Dave King on Friday was followed by clearing up sessions on the Saturday and Sunday with the help of the Second Goring Scout Troop and National Trust Wardens. Many thanks to Warden Vic Oliver and his team at Cissbury for their help and co-operation and to SEEBOARD for opening up their access road at Steyning to allow car parking for the Mumbles open day.

Philip Clay

References

*Steyning Ringing Group Report 1994 - Shoreham District Ornithological Society Annual Report 1994.

SANCTUARY REPORT 1997

During 1997 I visited the copse on 45 occasions. This brief annual report is based on notes from these visits and from comments by two other regular visitors, Dr Barrie Watson and Stanley Allen. There were 13 sessions of mist-netting, slightly fewer than usual, but, in keeping with recent years, these were all morning visits between 26 May and 19 October.

The table opposite summarises the ringing during the past decade and shows a continuing decline. The average catch in 1988 was nearly twice that in 1997 and the best day in 1997 only matches the average catch in 1988. The extensive coppicing during the winter of 1996/97 left many of

the mist-net rides without background but even in areas where no work was done the catches were poor. The willow withy in the northern portion of the copse was untouched and here the mist-nets caught about 2.2 birds for each metre of net set. In both the centre of the copse and in the old garden sites, where there was extensive clearing the respective figures were 2.1 and 1.8 birds per metre of netting and only on the west side, bordering the reed bed, was the figure a more respectable 2.8 birds per metre of net. Overall in 1997 a metre of mist-netting needed to be set for about 24hrs to catch a single bird!

During the cold weather in early Jan-

Summary of ringing effort and results for 1988 - 1997

	1988	1989	1990	1991	1992	1993	1994	1995	1996	1997
No sessions	26	19	19	9	13	16	14	16	16	13
Av. catch	45	50	52	31	32	31	37	38	27	25
Year best	253	135	94	56	53	49	70	66	55	46

uary at least 3 Snipe and 2 Woodcocks were looking for soft mud near the springs for feeding. Small birds were few but at least one Treecreeper survived the frost and the Long-tailed Tits joined Blue and Great Tits feeding from peanuts. A Firecrest on 15 February and a Peregrine on 22 February were the highlights of the winter. Later in the winter the weather turned mild and clumps of frog spawn were noted as early as 26 February.

The Marsh Marigolds were in full flower in early April but the sole clump of Tussock Sedge was looking very sad having been starved of water, overshadowed by dense willows and nibbled by Rabbits. The Society's outing to the Sanctuary on 27 April, led by Stanley Allen, produced very few birds, but butterflies, including Orange Tips, were more evident. A Tawny Owl was seen on 9 May but the owl nest box was not occupied this year. A pair of Mallard bred successfully as 6 well grown ducklings were seen on 8 June.

Although the summer and autumn were warm it was also very wet at times and the rain often coincided with planned mist-netting sessions. In light rain on 5 August there were at least 20 Willow Warblers in the copse whilst on other days there were few; indeed the whole year's ringing total of 10 is testament to the paucity of this species. Other warblers too seemed equally scarce. With few birds to see or catch there was ample opportunity

to admire the Flowering Rush and Autumn Ladies Tresses which again bloomed in profusion. The best ornithological records for the autumn were a flock of 18 Crossbills which flew NE over the copse on 5 July, the regular parties of Siskins in September and a Stonechat, the first for many years, on 19 October. Siskins were still evident well into the autumn with 42 on 22 October. A single Woodcock was resting in the copse on 8 November.

Throughout the year various maintenance tasks were completed: The winter coppicing was done by Bob Anonini in January but we did not finish clearing and burning until mid-March. To improve safety, many of the rickety and slippery bridges were re-built in the spring. Between May and July all the paths were regular cleared and in June the water authority erected more fencing and a new gate into the copse. In the late autumn the surrounding dyke was again dredged and cleared by the Environment Agency but despite this the heavy rains at the end of the year brought high water levels and extensive flooding in the copse.

I would like to express the society's thanks to Mr W. Schultz and to the staff of Southern Water for their help and co-operation during the year. Once again I thank Bob Antonini for his help with the gardening and Dr Barrie Watson for help with maintenance and ringing activities.

John Newnham

WORTHING SEAWATCHING REPORT FOR 1997

Introduction.

During 1997 the sea-watching log revealed a total of 183 hours of watching. The trend for fewer hours observations continues with an 11% reduction on the effort in 1996. In keeping with past years most sea-watching (59% compared with 58% in 1996) was recorded during the spring (March to May) and the following figure demonstrates this clearly. The figure is remarkably similar to that for 1996 with May, traditionally the best month, being again cold and disappointing.

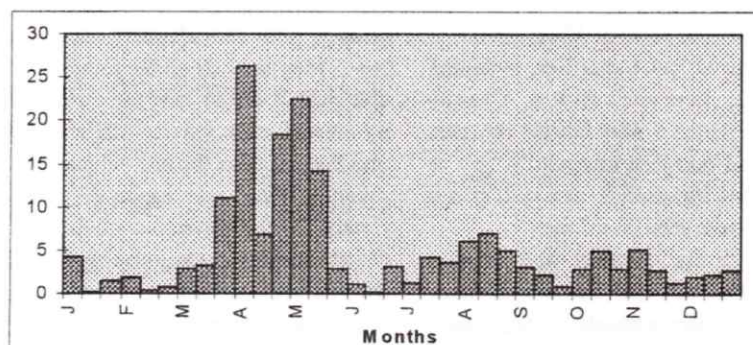
A total of only 9,748 non-passerines were logged making 1997 one of the poorest recorded years and the overall rate of just 53 birds per hour was half that of 1996. Only three species attained year totals greater than 1,000: the tally of 1,070 Brent Geese, 1,688 Black-headed Gulls and 1,518 Sandwich Terns would, in most

years, be reached in just one day. The extent of the poor recorded passage in spring is shown in the following table.

Like previous years a daily log was passed around the observers for the period 1 April until 31 May and, as usual, most observations took place from the shelter opposite Marine Gardens, West Worthing but watches are included from other sites such as Ferring Beach, Goring Beach, Worthing Pier, and Brooklands Beach.

Several watchers were present, especially in periods of potentially favourable winds during the spring but particular thanks go to the following observers who have contributed records to the daily log which form the basis for this report.

P.M.Brayshaw; C.E.Hope; R.A.Ives; J.A.Newnham; R.J.Sandison; D.I.Smith; and R.Tofts.



Number of hours seawatching at Worthing during 1997 in 10 day periods

Hours watched and total numbers of birds seen												
	Jan	Feb	Mar	Apr	May	Jun	Jul	Aug	Sep	Oct	Nov	Dec
Hours	5.7	2.9	17.4	51.5	39.4	4.5	9.1	18.1	6.3	11.0	9.3	6.9
Total	255	114	1027	3454	2511	146	473	346	308	532	351	171
Birds/hour	45	39	59	67	64	32	52	19	49	48	38	25

Chronological Account

The year started with promise as cold weather brought five Goosanders and a Black-necked Grebe to the beach on 4 January with a further Goosander, 26 Red-throated Divers and 44 Shelduck moving westward the following day. A Whimbrel, first heard whistling, arrived from the East and fed with the other waders on the beach also on the 5th. A Peregrine on 29 January and a count of 676 Dunlin flighting to roost on 9 February were the only other winter records of note. Further east in Sussex large numbers of diver *spp* and auks were recorded but sightings of these were absent from the West Sussex shores.

March heralds the spring and true to form the first Little Gull was seen on the 2nd, the first Wheatear on the 9th and the first of 17 Sandwich Terns in March passed east on the 22nd. March often brings large movements of wildfowl and particularly Brent Geese; these were missed from this beach in 1997. A Shag on 24 March, a Great Northern Diver on 25 March and the first of the spring Mediterranean Gulls appeared on 27 March.

Mediterranean Gulls occurred regularly in April with at least 11 sightings and a Glaucous Gull on 6 April was the other gull of note. The same day brought the first Arctic Skua of the spring but observers needed to be patient to see this species as only five were seen in April (with a further 18 in May). On 7 April, three more Goosanders moved east and a Red-necked Grebe was on the sea, two Long-tailed Ducks, four Avocets and a Short-eared Owl were the highlights of the following day whilst another Short-eared Owl arrived on the 9th. Unknown to ob-

servers at the time, this day was probably the busiest of the spring with 332 Common Scoter and 205 Sandwich Terns. After 9 April the month went very quiet with poor totals of most species most notably only 86 'Commic' terns were logged.

Worse was to follow as observers hopes rise in early May. The 2nd was the day to be on the beach if Pomarine Skuas were the target! This was a misty dreary day with little else moving, thus only a few hours were logged and only 26 Pomarine Skuas were recorded which compared very poorly with other sites where the day was watched throughout. No Pomarine Skuas appeared during the rest of the spring and the following morning nine Black Terns and a Little Egret were the only compensation. An Osprey was blown west over the coast road on 4 May whilst a Garganey and three Manx Shearwaters were seen over the sea. In fresh SSW winds on 10 May 174 Gannets and 103 Sandwich Terns were recorded but overall totals of most species in May were low. Month totals of 54 Bar-tailed Godwits and 88 Whimbrel are poor but seem good against totals of just five Grey Plovers, two Knot or three Turnstones. Terns too were not seen in large numbers and it is unusual for the May total of Sandwich Terns (540) to exceed the 'Commics' (471). The only other high spots of this cold, often wet, and certainly disappointing month were six Avocets on the 16th and 18 Black-tailed Godwits and a Peregrine on the 17th.

The summer watching was mainly from the beach hut in-between dips into the sea, little was seen and I doubt much was missed. There were no notable blows in the autumn and it wasn't until October

that any significant movements were recorded. During the morning of 12 October, in a cool northerly wind, there was a large westward movement of Redwings, 2,540 were seen moving west behind the beach. Passerines were recorded in good numbers in the autumn with 1,850 Wood-pigeons flying east on 22 October and October totals of 1,232 Goldfinches and 228 Linnets. Mixed with these were a few Redpolls and several Siskins. Just a few Brent Geese were recorded moving west

and there were very few records of divers or auks at the end of the year. A Peregrine over the beach on 18 October caused the usual mayhem amongst the other birds. Despite strong winds at the end of the year there were no good watches and observers had to be content with brief views of distant planing shearwaters, a Merlin on 16 December and two Bonxies, one over the shingle, on Christmas morning.

John Newnham

SEAWATCHING AT BRIGHTON MARINA 1997

This year for the first time, the number of hours spent seawatching at the Marina exceeded those logged at Worthing. The Recorder would like to give a special commendation for their effort to the two principal watchers at the Marina, Kris Gillam and Ian Whitcomb.



Hours watched at Brighton Marina 1997

	Jan	Feb	Mar	Apr	May	Jun	Jul	Aug	Sep	Oct	Nov	Dec
Hours	24	18	42	64	54	4	-	8	17	10	11	38

INDOOR MEETINGS 1997

George McCarthy came to us in January with the appropriate subject of 'Four Seasons'. He is an experienced speaker with a deep understanding of the inter-linking of all aspects of natural history and illustrated his knowledge with excellent slides. He also gave sensible and thought-provoking advice to keen photographers.

John Buckingham's title was 'Bird Behaviour' but although his photographs were good and he was an interesting lecturer, he didn't even touch on the title of

his talk.

Brenda Holcombe arrived in March with her husband Tony, only a few days after returning from their latest trip. She was a lively and entertaining speaker about her visits to Canada ranging from Manitoba to the prairies and the Great Lakes. She included flowers, butterflies, Bison, Polar Bears as well as an interesting selection of birds including a memorable Great Grey Owl.

Our April AGM was followed by a fas-

cinating talk by Tim Loseby on the Birds of Bharatpur. As well as a birding bonanza, we saw the Taj Mahal and the Mogul city of Fatehpur Sikri. The reserve looked very pleasant with easy walking or alternatively being carried by rickshaw - we all felt Bharatpur should be added to our own holiday plans.

Brian Metcalfe offered us a bright return to indoor meetings in October. He took us on a tour of America covering Florida, Texas, Arizona and California which he had visited during three trips made between 1992-6 with Hilda, his wife. Brian's slides showed great skill and determination: he often seemed to be within inches of the bird. His lively talk was enjoyed by a large audience.

Alan Malpass, from the Sussex Wildlife Trust, made a welcome return in November to update us on our county's wildlife. He divided his talk into sections: Hay Meadows, Heathland, Woodland and Marsh, each separated by beautiful sunsets. We were treated to butterflies, flowers, trees, spiders and birds, an indication of the depth of Alan's interests and knowledge. He finished by reading part of Rudyard Kipling's poem 'Sussex by the Sea'.

Four members provided short talks for the December meeting. Bernie Forbes told us how he first started to record birds when he was in short trousers! He impressed on us the importance of records not only as a personal diary, but also as a way of cross checking with others' observations. Stanley Allen showed some excellent slides of rare and interesting birds seen locally at Widewater, the Harbour, the Fort, and at Littlehampton. He described the past year when he had limited

mobility. On expeditions with Bernie he'd seen 82 species mainly using the car as a hide. Brianne had driven him to Kent to see orchids, Lizard, Man and Lady. They were also lucky enough to see pristine Heath Fritillary butterflies. Certainly a day to remember! He continued with some views taken from 3 Mill Hill, Shoreham, of the vagaries of our weather: dramatic cloud formations and other amazing skies. His talk was full of lively anecdotes and good slides. Clive Hope had been to Lesbos with Chris Fox and John Newnham in April and showed slides taken there. The weather had been unkind but the migrants were plentiful and the party saw many birds despite going early in the season. Glossy Ibis were numerous and easy to see. Several other members had been to Lesbos in May, so it is clearly popular. Finally Brianne Reeve departed from the usual pattern by reading a story by A.A.Milne, 'The Arrival of Blackman's Warbler' a clever and hilarious commentary on those who think they know everything about bird identification. It raised some laughs! She closed the evening with her personal choice of favourite slides of 1997, including butterflies, orchids, and flowers mainly found locally or in Kent. It was a fine ending to a year of interesting meetings.

My thanks go to all those speakers who spend so much time taking their photographs and then planning their talk before they come to the Society and our critical members! I would also like to thank Diane and Terry Hicks who have been so reliable and helpful in serving refreshments at meetings.

Brianne Reeve

FIELD TRIPS 1997

On the 19th Jan, 18 members joined Bernie Forbes on the outing to Itchenor and East Head. It was a cloudy, calm and fairly mild day and a very productive walk around Chichester harbour and adjacent farmland in the morning and later on around the beach, East Head and Snowhill Marsh all produced many good birds including stunning views of 4 Snow Buntings. A great start to the year! Also of note were 3 Little Egrets, Goldeneye, 2 female Scaup, 7 Ruff, both Bar & Black-tailed Godwits, c80 Golden Plover, Sparrowhawk and Merlin. Some members visited Chichester Gravel Pits on their way home where 4 male and 4 female Smew and a Red-crested Pochard concluded an excellent days birding.

On 16th Feb, 12 members joined Richard Ives for a walk around Pagham Harbour. Unfortunately the weather was unkind, starting off grim and wet. Doggedly the group undertook a quick recce round the Ferry before moving to Church Norton where the heavens opened. Refuge was sought in the hide where another member of the society was found encamped waiting for a glimpse of the drake American Wigeon seen on previous days. Our soggy log books contained entries for 10 Knot, 4 Avocets, and a small race Canada Goose. We watched an oiled Guillemot given severe treatment by a Herring Gull before deciding to abandon the outing at 10.30am.

On 23rd March, Peter Whitcomb met members, at Brighton Marina. A walk along the west arm produced 30+ Meadow Pipits and 9 Ringed Plovers on rough ground; 7 Purple Sandpipers and a Shag around the Marina and 3 Common Scoters and 4 Fulmars on or over the sea.

On the 27th Apr the Shoreham Sanctuary was opened to members for the morning with Stanley Allen guiding the group. Surprisingly, there was plenty of lying water throughout despite the fact that no rain had fallen for some time. We saw that much necessary clearance work had been done. While the birdcount was down on last year, we recorded five warbler species, namely, Willow and Sedge Warbler, Chiffchaff, Blackcap, and Whitethroat. Betty Bishop shared her botanical knowledge with members and finds included Tussock Sedge and a fine display of Marsh Marigolds; the only locations for both these plants in the Adur Valley. There were also many species of moss and lichen within the Sanctuary.

Dave Smith took charge of a group of 12 on 24th May, visiting Fishbourne and Apuldrum in the morning. Although sunny there was a strong easterly wind. Nevertheless despite relatively few duck/waders around, warblers included several Reed, 1 Sedge, 1 Lesser Whitethroat and 2 Blackcap. We transferred to West Dean woods in the afternoon finding the usual woodland fare plus Tree Pipits and Buzzards, and Green Hairstreak and Grizzled Skipper butterflies.

Many members missed a superb visit to the CBDE Porton Down near Salisbury, Wilts on the 14th Jun. Nine of us were shown the history and the layout of the area before undertaking a morning's stroll through the open grassland areas and flintmines led by 2 Reserve Assistants, Trevor and Philippa, together with their dog, Cindy. Although cloudy it was bright and warm and we recorded 2 Turtle Doves, 6+ Cuckoos, a Hobby, and a Buzzard carrying rabbit prey. We settled down to eat lunch

on a hillside from where we had telescope views of 2 Stone Curlews. Other wildlife recorded included: Common Blue, Dark Green Fritillary and Speckled Wood butterflies and also, Fox, Polecat, Rabbit, Roe Deer and Fallow Deer. Bird's nest, Burnt tip, Pyramidal, Fragrant and Common Spotted Orchid were also of great interest

Peter Friston and his wife shared their local knowledge of the Ashdown Forest with 9 members on a cloudy but fine evening of 4th July. We had seen Woodcock, distant Dartford Warbler and Heath Spotted Orchid before 2 Nightjars started churring at 9.30pm. We heard flight calls but did not see them well.

On the 30th Aug, Clive Hope led 6 members around Farlington Marsh on a cloudy, breezy but fairly warm day. The route included the sea wall and some scrubland, and the 50 species recorded included at least 6 Little Egrets, Peregrine, 15 Greenshanks, c20 Yellow Wagtails, 8+ Whinchats, 6+ Wheatears, Spotted Flycatchers, 2 Knots and counts of 500 Grey Plovers and 1000 Oystercatchers. It was a good day's birding but, the next day both Wryneck and Pectoral Sandpiper turned up.

On 13th Sep about 10 members, led by Peter Whitcomb, met at Birling Gap for a stroll across to Crowlink. Good numbers of Sylvia warblers, chats and finches were seen, the latter including c200 Linnets and 30+ Siskins. However, the most notable sighting, a probable first for an SDOS outing, was saved until the group were heading back to Birling Gap. With only a few hundred yards to go before the end of the walk, a large butterfly flew fast over our shoulders heading east. Amazingly we realised, after a few seconds that it was a Monarch and the whole group dashed down the hill

and up the other side but alas we could not, relocated it.

Brianne Reeve met 16 people for a walk at Mill Hill, Shoreham on 4th Oct. On a cloudy but warm morning we logged 27 species, including Siskin, Green Woodpecker and Sparrowhawk. Modern technology helped the group locate a Little Owl; the Society's President stationed at the top of the hill gave us its location by mobile phone! We recorded 10 species of butterfly including 6 unusually late Adonis Blues.

On Nov 23rd Bernie Forbes led a large group of members around the Dungeness area on a fairly overcast and breezy day. We recorded 57 species including Red-necked and Slavonian Grebes 4 Smew and at least 3 Black Redstarts. We had reasonably good views of the Spur-winged Plover, another first for the SDOS! After leaving Dungeness, several members continued up the road to Greatstone-on-sea where, we had been told 5 Snow Buntings had been seen. As we arrived, they obliged by flying over the beach and landing in front of the group on the edge of the dunes. A fitting finale to another good days birding.

The traditional apres-Christmas Adur walk was conducted by Stanley Allen on a beautiful, sunny 27th Dec. At the Fort we found a good count of 20 Turnstones and a Purple Sandpiper. Although the regular Mediterranean Gull did not show itself we recorded most of the other expected gull species in a variety of immature plumages. Some of the 18 assembled members glimpsed a Black Redstart near the Fort and later a Bar-tailed Godwit further upriver.

Members attending all of the above outings will have notched up at least 134 species.

Tony Fenton

GARDEN BIRD FEEDING SURVEY - WINTER 1997/8

Fifteen members took part in this winter's survey with two new participants. Gardens represented came from no less than eleven different areas from Brighton in the east to Ferring in the west and Steyning and Storrington at the northern boundary giving coastal, suburban and semi-rural environments.

The weather in October was fine, dry and mild, but did not prevent birds taking advantage of garden feeders. The spell broke to give a changeable November, and early December was cold with some snow which didn't last. The new year was wet and windy but February proved to be the mildest and driest for many years. A reversion to more typical wet and breezy conditions accompanied March's entrance but there were some mild and sunny spells later in the month.

It is interesting to compare the relative abundance of the top twelve species over the past six or seven years since the survey was re-introduced; also the number of species recorded and those occurring in all gardens participating (see table opposite).

A new species for the survey was Black Redstart seen in the Sandison's garden in Findon Valley. A Skylark appeared in January at Sylvia Denman's Hove garden as well as a Marsh Tit (again) in December. The latter species was also recorded by Phyllis Walker in Worthing. A single Treecreeper appeared in Storrington on three widespread dates. Bullfinches were recorded in just two gardens, both single birds and three visits in total. No Nuthatches were seen for the first time during the present survey decade. Sparrowhawks have found a reliable food

source with no less than eight of the fifteen gardens noting them. Blue Tits and Starlings have been among their victims.

With a milder winter, it wasn't surprising that Blackcaps and Chiffchaffs should show up at four and seven sites respectively. Thirty bird-month Goldcrests in eight gardens is also something to interest the recorder since this species is usually under recorded in our area.

A very poor winter for migrant thrushes yielded just four Redwings and no Fieldfares. Siskins had an average showing with 29 from four sites with the earliest appearing in November, some six weeks before their typical dates. Great Spotted with six and Green Woodpecker with three venues was encouraging, a new species for some gardens and probably a sign of a general increase in numbers.

At the other end of the spectrum, counts of Feral Pigeons peaked at 42 and 63 in two gardens moving it to third most numerous bird. Magpies continue to increase with nearly 2% of the overall total and 13 gardens recording them.

The maximum number of species in a month was 26 in November at the Champions' in Brighton.

Clive Hope

Survey participants were:

S R Allen, S Bickham,
G L Champion, J Cooper, D Culpitt,
S Denman, A & J Fenton,
M & P Ford, C E & P Hope,
H Jackson, C & M Leeves,
P R Mayard, R & A Sandison,
P Walker, P Whitcomb

Winter	90/91	91/92	92/93	93/94
No of gardens	11	15	14	15
No of species	40	c.30	37	40
Species seen in all	5	3	8	-
Relative abundance				
1	Starling		Starling	Starling
2	H Sparrow		H Sparrow	H Sparrow
3	B H Gull		Greenfinch	Greenfinch
4	Greenfinch		Blue Tit	B H Gull
5	Coll. Dove		B H Gull	Blackbird
6	Blackbird		Blackbird	Blue Tit
7	Blue Tit		Coll. Dove	Coll. Dove
8			Woodpigeon	Chaffinch
9			Chaffinch	Dunnock
10			Great Tit	Robin
11			Dunnock	Great Tit
12			Robin	Woodpigeon

Winter	95/96	96/97	97/98
No of gardens	17	22	15
No of species	44	51	42
Species seen in all	3	5	5
Relative abundance			
1	H Sparrow	H Sparrow	Starling
2	Starling	Starling	H Sparrow
3	Fieldfare	Blue Tit	Feral Pigeon
4	Greenfinch	Greenfinch	Blue Tit
5	Blackbird	Blackbird	Blackbird
6	B H Gull	B H Gull	Greenfinch
7	Blue Tit	Coll Dove	Coll Dove
8	Redwing	Feral Pigeon	B H Gull
9	Coll Dove	Woodpigeon	Dunnock
10	Magpie	Chaffinch	Chaffinch
11	Dunnock	Dunnock	Woodpigeon
12	Chaffinch	Great Tit	Robin

A GUIDE TO RECORDING BIRDS IN THE SDOS AREA

Since taking over as Recorder, I have been asked for guidance on the sending in of sightings and breeding records. The Society is keen to encourage all members to send in their records so that a complete picture of the birds of the area can be shown in this Report. As most members will already be aware of the need to report scarcer birds and all rarities, I propose to use this space to give examples of some 'grey areas' where members may be uncertain of the usefulness of reporting a record.

It really goes without saying that any bird noticed to be in decline, or to have a changed distribution should be considered important. We are fortunate to have good numbers of corn Buntings and Skylarks, species which are in decline nationally, but what of Tree Sparrow, Sand Martin and Lesser Spotted Woodpecker? Are they really as rare as the lack of records indicates? Do Spotted Flycatchers or Grey Wagtails nest in our area? Also for 1997, I have received very few reports of Cuckoos or Lesser Whitethroats. These are just a few examples and from the Recorder's point of view, it's difficult to formulate any pattern for some of the scarcer breeding birds. I would urge all members to send in records of successful or possible breeding for these species. And even a rookery count wouldn't go amiss!

Nowadays, in a good year, over 200 species are recorded in our area, ranging from the very common to the very rare. In between are species considered 'grey areas'. The following examples illustrate which records to send in:

— two Bullfinches flitting across a rural hedgerow. We don't need this record of a widespread species, but a family party with juveniles would prove breeding and the record would be welcome.

— a Wheatear on Goring Beach. A single record is perhaps unimportant, but if the bird was seen in early March or November the record would be worth sending in as it could be the first or last of the year.

— a large raptor soaring over Cissbury Ring. You think it's a Marsh Harrier but aren't absolutely sure. Send it in as a 'probable' as someone else may have seen the same bird further along the downs. The direction of flight would be useful.

— a flock of Wood Pigeons in a field. Again rather insignificant but if unusually, they were feeding on the tideline of beach of a large flock coming in off the sea (pigeons do migrate, especially in November) - in both cases send in the record.

— you find something rare and exciting. If it looks likely to stay, 'phone another member to share it, and help verify the sighting. It's most important that all national rarities should be submitted to the SOS with a full description. Forms are available from Robin Pepper, Scobells Farm, Boast Lane, Barcombe Lewes BN8 5DY. Please mention to the SDOS recorder that the record is under consideration. The record will be confirmed the following year if necessary.

Remember, if in doubt, send it in! The society will not mention the location of a breeding site, owl roost and confidentiality will be honoured.

Peter Whitcomb

DETAILED SPECIES GUIDELINES

- A — All records required.
 B — Birds confirmed as breeding or holding territory, singing males.
 C — Common birds, only report on absence, decline or distribution changes.
 D — Detailed description to SOS to substantiate claim. All species NOT listed will be D.
 E — Earliest and latest dates for summer and winter migrants.
 F — Large flock counts, unusual sightings of common species.
 M — Migration, seawatching data and weather-related movements.
 N — Brief notes to support claim of scarce bird.
 W — All late or winter records required.

Red-throated Diver..... A	Shoveler..... A	Little Ringed Plover..... AN
Black-throated Diver..... A	Red-crested Pochard..... D	Ringed Plover..... BFM
Great Northern Diver..... D	Pochard..... F	Kentish Plover..... D
Little Grebe..... AB	Tufted Duck..... BF	Dotterel..... D
Great Crested Grebe..... BF	Scaup..... A	Golden Plover..... A
Red-necked Grebe..... A	Eider..... FM	Grey Plover..... FM
Slavonian Grebe..... A	Long-tailed Duck..... A	Lapwing..... BF
Black-necked Grebe..... D	Common Scoter..... FM	Knot..... A
Fulmar..... M	Velvet Scoter..... A	Sanderling..... A
Cory's Shearwater..... D	Goldeneye..... A	Little Stint..... A
Sooty Shearwater..... D	Smew..... A	Temminck's Stint..... D
Manx Shearwater..... AN	Red-breasted Merganser..... F	Curlew Sandpiper..... A
Mediterranean S'water..... D	Goosander..... A	Purple Sandpiper..... A
Gannet..... A	Ruddy Duck..... A	Dunlin..... F
Cormorant..... FM	Honey Buzzard..... D	Ruff..... A
Shag..... A	Red Kite..... D	Jack Snipe..... A
Bittern..... A	Marsh Harrier..... A	Snipe..... F
Little Egret..... A	Hen Harrier..... A	Woodcock..... AM
Grey Heron..... BF	Montagu's Harrier..... D	Black-tailed Godwit..... A
Purple Heron..... D	Goshawk..... D	Bar-tailed Godwit..... A
White Stork..... D	Sparrowhawk..... B	Whimbrel..... AE
Spoonbill..... D	Buzzard..... AB	Curlew..... F
Mute Swan..... B	Rough-legged Buzzard..... D	Spotted Redshank..... A
Bewick's Swan..... A	Osprey..... A	Redshank..... BF
Whooper Swan..... D	Kestrel..... BC	Greenshank..... A
Bean Goose..... D	Merlin..... A	Green Sandpiper..... A
Pink-footed Goose..... D	Hobby..... AB	Wood Sandpiper..... A
White-fronted Goose..... A	Peregrine..... AB	Common Sandpiper..... E
Greylag Goose..... A	Red-legged Partridge..... AB	Turnstone..... F
Canada Goose..... A	Grey Partridge..... AB	Red-necked Phalarope..... D
Barnacle Goose..... D	Quail..... AB	Grey Phalarope..... D
Brent Goose..... EFM	Pheasant..... C	Pomarine Skua..... A
Shelduck..... AB	Water Rail..... A	Arctic Skua..... A
Mandarin..... A	Spotted Crake..... D	Long-tailed Skua..... D
Wigeon..... M	Corncrake..... D	Great Skua..... A
Gadwall..... A	Moorhen..... C	Mediterranean Gull..... A
Teal..... M	Coot..... CF	Little Gull..... A
Mallard..... B	Oystercatcher..... F	Sabine's Gull..... D
Pintail..... A	Avocet..... A	Black-headed Gull..... F
Garganey..... A	Stone Curlew..... D	Common Gull..... F

L. Black backed Gull.....BF	Tree Pipit.....BE	Goldcrest.....BF
Herring Gull.....BF	Meadow Pipit.....BCF	Firecrest.....A
Yellow-legged Gull.....AN	Rock Pipit.....AB	Spotted Flycatcher.....ABE
Iceland Gull.....D	Water Pipit.....D	Pied Flycatcher.....A
Glaucous Gull.....AN	Yellow Wagtail.....BEM	Bearded Tit.....A
Gt. Black backed Gull.....F	Yellow Wagtail subsp.....D	Long-tailed Tit.....BF
Kittiwake.....FM	Grey Wagtail.....AB	Marsh Tit.....A
Sandwich Tern.....EMW	Pied Wagtail.....BF	Willow Tit.....A
Roseate Tern.....D	White Wagtail.....N	Coal Tit.....BF
Common Tern.....EMW	Waxwing.....AN	Blue Tit.....C
Arctic Tern.....EMW	Wren.....C	Great Tit.....C
Little Tern.....EM	Duncock.....C	Nuthatch.....B
Black Tern.....A	Robin.....C	Treecreeper.....B
Guillemot.....A	Nightingale.....A	Golden Oriole.....D
Razorbill.....A	Bluethroat.....D	Red-backed Shrike.....D
Little Auk.....D	Black Redstart.....A	Great Grey Shrike.....AN
Feral Pigeon.....F	Redstart.....AW	Jay.....BF
Stock Dove.....BFM	Whinchat.....EF	Magpie.....CF
Wood Pigeon.....CM	Stonechat.....AB	Jackdaw.....CF
Collared Dove.....CF	Wheatear.....E	Rook.....CF
Turtle Dove.....AB	Ring Ouzel.....A	Carrion Crow.....F
Ring-necked Parakeet.....A	Blackbird.....CF	Starling.....F
Cuckoo.....A	Fieldfare.....EF	House Sparrow.....F
Barn Owl.....AB	Song Thrush.....C	Tree Sparrow.....AB
Little Owl.....AB	Redwing.....EF	Chaffinch.....CF
Tawny Owl.....AB	Mistle Thrush.....C	Brambling.....A
Long-eared Owl.....A	Cetti's Warbler.....AN	Serin.....D
Short-eared Owl.....A	Grasshopper Warbler.....AB	Greenfinch.....F
Nightjar.....A	Aquatic Warbler.....D	Goldfinch.....F
Swift.....EM	Sedge Warbler.....BE	Siskin.....BM
Kingfisher.....AB	Reed Warbler.....BE	Linnet.....BF
Hoopoe.....A	Dartford Warbler.....A	Twite.....D
Wryneck.....A	Barred Warbler.....D	Redpoll.....A
Green Woodpecker.....B	Lesser Whitethroat.....BE	Crossbill.....A
Gt Spotted W'pecker.....B	Whitethroat.....CE	Bullfinch.....BC
Lr Spotted W'pecker.....AB	Garden Warbler.....BE	Hawfinch.....A
Woodlark.....A	Blackcap.....EMW	Lapland Bunting.....D
Skylark.....BF	Pallas's Warbler.....D	Snow Bunting.....A
Shore Lark.....D	Yellow-browed Warbler.....D	Yellowhammer.....BF
Sand Martin.....BEM	Wood Warbler.....A	Cirl Bunting.....D
Swallow.....EW	Chiffchaff.....EMW	Reed Bunting.....BF
House Martin.....EW	Willow Warbler.....CE	Corn Bunting.....BF

SDOS recording forms are available from:
Peter Whitcomb, 99 Barnett Road,
Brighton BN1 7GJ.
Please enclose postage with your request.



KNOW YOUR AREA BETTER

HOLLINGBURY CAMP, BRIGHTON

There is always something to see at Hollingbury Camp throughout the year. The mixture of woodland and scrub surrounding the golf course provides habitat ideal for many common and familiar birds, but our walk will concentrate on migration periods. So, before we start, a few tips on the best times to visit. Early mornings in spring and autumn are preferable, but watch the weather forecast. If the night has been clear, most birds will have gone straight through, but if it is unsettled, even with a clearing mist or rain, the chances of finding a 'fall' of migrants are much higher.

The area is now a Local Nature Reserve and has two nature trails. One is no more than an hour's gentle ramble through Hollingbury Woods, while the other around the Wild Park is more strenuous and takes at least two hours. Brighton Tourist Information Centre has trail leaflets which can be useful for a first visit. However, it is best just to walk around, listening for bird calls, following the tit flocks, or checking out the most likely places. The small car park opposite Woodbourne Garage on Ditching Road is more favoured and safer than the official car park to the north.

We start our walk in Hollingbury Woods which is famous for the only colony of Ring-necked Parakeets in Sussex. Look for them in the tall trees behind the tennis courts and children's play area; unfortunately they have chosen a new nest site at Falmer University and are not seen as often as in the past. The great storm of 1987

devastated these woods and few of the magnificent stands of beech trees remain. But new, more open habitats soon developed with brambles and undergrowth, bringing in new nesting species such as Blackcaps and Whitethroats as well as Lesser Whitethroats and Garden Warblers in most years. Look for Stock Doves here and listen for Green and Great Spotted Woodpeckers which roam widely. The adjacent allotments are private, but worth checking, particularly in winter when a few Bramblings may join the Chaffinch flock.

From the north end of Hollingbury Woods walk towards the golf clubhouse and turn left to the rectangular practice area bordered by trees and hedges. In spring this area attracts Redstarts and both Pied and Spotted Flycatchers; while in autumn, Goldcrests and Firecrests favour the hedges. The central grassy area is a favourite feeding ground for the local Green Woodpeckers. Make your way carefully across the golf course to the summit of the hill known as Hollingbury Camp. Check the golf course for Wheatears and keep an eye out for Redstarts which like the small bushes, hopping out to feed on the shorter grass.

The Camp, an iron age hillfort, is archaeologically protected and the perimeter is kept cleared on an annual basis. Evidence of hut floors, tools and other remains suggest it was originally a permanent, probably fortified settlement. The Camp is probably the best area for bird-watching. The gorse and undergrowth,

which is cleared in rotation by volunteers, suits nesting Whitethroats, Linnets and Yellowhammers. Skulking migrants like Sedge or Reed Warblers may drop into the tall rosebay willowherb in the autumn. While more easily-seen migrants such as Wheatear, Whinchat, Redstart or Spotted Flycatcher could reach double figures. A male Dartford Warbler resident in the gorse since November 1994 has unfortunately failed to attract a mate. Scarce birds dropping in here have included Wrynecks and Hoopoes and old records show both Red-backed and Great Grey Shrikes. In late autumn, flocks of Redwing come to feed on hawthorn berries and Stonechats are regular and often stay to winter.

It is worth exploring the area directly east of the Camp especially in spring when singing Wood Warblers (which unfortunately pass fairly quickly on) are regularly heard from the taller sycamores. Check here too for flycatchers and warblers although in the autumn, they tend to prefer the more open areas and woodland fringe. Numerous paths crisscross this section where it joins the top part of the nature trail. There's a good view of the Wild Park and the unique coomb of protected chalk grassland which is excellent for flowers and butterflies. The slopes here may be more sheltered in windy conditions. Well over 30 species of common resident birds and summer-visiting warblers nest in the Wild Park in impressive numbers. Nightingales are heard most years, but breeding has not been proved. Sparrowhawks and Kestrels nest nearby and can often be seen hunting over the tree-tops and the coomb below. Other raptors, like a Hobby in summer or a wintering

Merlin may appear. Follow the nature trail south from the viewpoint. The woodland soon opens out into bushy clearings which are especially good for nesting Common and Lesser Whitethroats and Linnets. In autumn, look for tit flocks which will almost certainly include warblers or crests.

The nature trail now heads down toward the Lewes Road but it's better to explore further south to the large arable field which can be interesting when ploughed or with stubble. The field attracts scavenging corvids, mixed pigeons and sometimes gulls, and in autumn even Woodlark and Ortolan Bunting have been seen feeding. Further south, towards Hollingdean Estate, are more allotments where Black Redstarts are almost annual visitors in autumn. Check them from the perimeter fences. Then either retrace your steps via the golf course and Camp, or walk through Burstead Woods, then up through Hollingbury Woods back to the car park.

Perhaps the most significant feature of Hollingbury Camp is the regularity and variety of overflying migrants. Luckily, most call in flight, so listen at all times for the distinctive contact calls of Skylark, Yellow Wagtail, Meadow and Tree Pipit, Siskin and Redpoll. The movements of Swallows and martins is more visible and sometimes many thousands pass in a few hours. The movement usually peaks well into September and is curious in that the birds often fly north to Ditchling Beacon to join the main east/west movement along the South Downs. Larger birds flying over could include Whimbrel or a raptor such as a Marsh Harrier or Buzzard soaring high over the Camp. Later in autumn, interesting birds which may drop down to feed or

shelter include Brambling, Ring Ouzel, and winter visiting thrushes. Goldcrests appear over a wide area in late autumn and Woodcocks often winter but are very difficult to locate.

The area has had its share of rarities, the most famous being the hopelessly out-of-habitat American Bittern in 1909. During the last ten years, Honey Buzzard, Red

Kite, Red-footed Falcon, Red-breasted Flycatcher and Serin have all been recorded. So good luck when visiting and you may even turn up something unusual. I publish annual accounts of bird sightings and breeding records each year: please send 50p towards cost and postage if you would like a copy.

Peter Whitcomb

SDOS OFFICERS FOR 1997

President	Mr S R Allen
Hon Secretary	Mrs B Reeve The Old Rectory, Coombes, Lancing, West Sussex BN15 0RS. Tel: 01273 452497
Hon Field Secretary	Mr A R Fenton 14 Rosemary Drive, Shoreham-by-Sea. Tel: 01273 591291
Hon Treasurer	Mr A D Bullock
Hon Recorder	Mr Peter Whitcomb (see page 68)
Hon Report Editor	Mrs P H Mulcock Pinehurst, West Drive, Angmering West Sussex BN16 4NL Tel: 01903 776251
Chairman of the Council	Mr B F Forbes
Sanctuary Committee	Dr J A Newnham Dr A B Watson
Other Committee Members	Mrs P Ford Mr T Hicks

RECEIPTS AND PAYMENTS ACCOUNT **FOR THE YEAR TO 31 DECEMBER 1997**

	1997	1996
RECEIPTS	£	£
Balance brought forward	4032.49	3,900.91
Subscriptions	1210.50	937.00
Sale of books, reports and cards	5.50	24.00
Net raffle and refreshment receipts (including barbeque)	93.80	66.62
Bank interest	119.19	80.02
Donations		7.00
	<u>5,461.48</u>	<u>5015.55</u>

PAYMENTS		
Printing	283.28	176.92
Postage and stationery	145.54	185.85
Secretary's expenses	3.78	22.83
Hire of hall	134.00	72.00
Southern Water Authority	4.00	4.00
Speakers' fees	252.00	392.70
Sundries	19.00	118.87
Sanctuary expenses	165.00	-
RSPB - re Bird Race	492.00	-
Purchase of extension reel	-	9.89
Balance carried forward	3962.88	4032.49
	<u>5461.48</u>	<u>5015.55</u>

A D Bullock (Hon. Treasurer)

Dated 20th February 1998

ACCOUNTANTS' REPORT

In accordance with instructions given to us, we have prepared without carrying out an audit, the above receipts and payments account from the accounting records of Shoreham District Ornithological Society and from information and explanations supplied to us.

MOORES ROWLAND

Chartered Accountants

BRIGHTON

Date 24th February 1998

