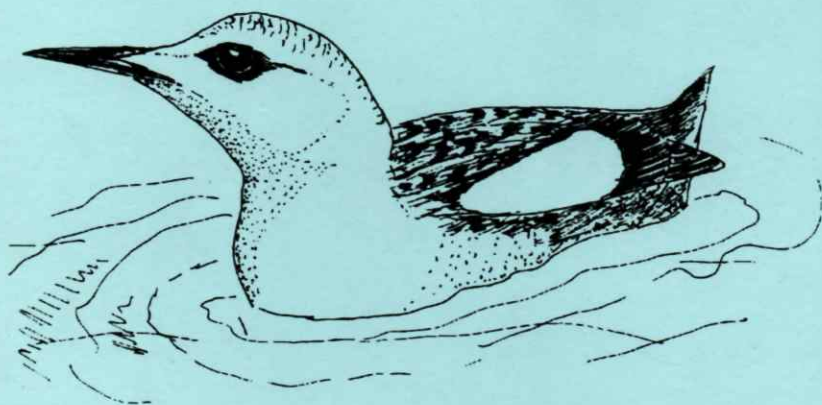


**Shoreham District
Ornithological
Society**

ANNUAL REPORT 1995



No 43

Price £3.00



**SHOREHAM
DISTRICT
ORNITHOLOGICAL
SOCIETY**

ANNUAL REPORT 1995

CONTENTS	PAGE
Foreword	2
Notable Birds of the Area	3
Systematic List for 1995	5
Update of Rarity Records	47
Arrival and Departure of Migrants	49
Ringling Report	50
Sanctuary Report	52
The Botany of the Sanctuary	54
Garden Bird Feeding Survey	56
John Stafford's Retirement	59
Know Your Area Better	60
Worthing Seawatching Report	62
Steyning Ringing Group Report	65
Field Outings	67
Indoor Meetings	68
Twenty-five Years Ago	69
Submission of Members' Records	70
Editorial Footnote	70
Officers	71
Accounts	72

Cover illustration of Black Guillemot, logo and line drawings on pages 19, 27, 30, 61 and 66 by Richard Ives.

Line drawings on pages 15, 34 and 38 by John Reaney.

FOREWORD

In the late 1960s, I applied to become a member of SDOS, having attended an excellent lecture by John Stafford, in the old Shoreham Town Hall. However, I was told by the then Hon Secretary that there was at least a six-year waiting list - and so it turned out and I had to wait till about 1976 to be admitted. Not in my wildest dreams did I think that one day I would have the honour of becoming the Society's second President - only two Presidents in the 43 year history of SDOS. It is, of course, impossible for me to try to emulate John Stafford's unique contribution to SDOS in particular, and to ornithology in general; his distinguished international record has been fully documented. He founded SDOS, in 1953 when ornithology was a comparatively rare hobby, and it was entirely through his effort that the first annual report was published; through him the Sanctuary was opened, and thus started SDOS's very considerable ringing activities. He hands over to me a highly successful and vibrant Society - and I will of course do all I can to ensure future success.

And yet in 1981, the Society nearly foundered. A special meeting was called to consider the future of the Society and there were many who felt that it had no future; membership had fallen off, there was an unwillingness to take on the various offices, and we had no meeting place. I wanted to go to that meeting and urge that we should continue. Unfortunately, I had to go to hospital, and so my wife, with a lot of trepidation, read my speech. Luckily there was overwhelming agreement that SDOS should go on, and from then on SDOS has gone from strength to strength, thanks to an enthusiastic membership, and the hard work of those who take on the various tasks in the council.

I am lucky to take over from John at such a high point in the Society's history; but membership must be maintained and the jobs which mean a lot of hard work must be filled by people who don't mind that hard work. This applies not just to the Council, but also to the more menial tasks such as getting the Hall ready for meetings and clearing up afterwards, running (and this means buying, bringing and serving) the refreshments and so on.

I would like to see more members arranging between themselves to pass on by phone up-to-date bird information - and particularly trying to get this information to new members. One recalls the notorious 'chain letters' - but something like this for bird news - by phone not letter! - would be no bad thing. Birdline is excellent - but there is nothing to beat the red hot news from someone who has just seen 'it'!

With those thoughts - may I wish you all much good and happy birding.

Stanley Allen, President

NOTABLE BIRDS OF THE SHOREHAM AREA IN 1995

As the door closes firmly on 1995, we can look back on a rather indifferent year but with a smattering of interesting records. Before outlining the 'birds of the year', I wish to apologize for certain exclusions in the systematic list, mostly records received rather late for inclusion. I find my spare time diminishing quite consistently and I have to start preparation for the copy of the list at the beginning of February so inevitably some late records are omitted. Anyone who feels that a necessary inclusion has been omitted should please make contact and I shall include the record(s) in the 'Additions' section next year.

After a crisp New Year, the weather rapidly returned to inclemency, remaining largely so for the entire month. During this period, however, we recorded a first winter Grey Phalarope around Shoreham Harbour from 17th-21st and up to two Little Gulls in the same vicinity from 14-20th.

If February fails to produce snowy weather, the chances of mass hard weather bird movements are seriously threatened. 1995 eclipsed 1994 by failing to produce even one snowy day, thus denying the SDOS area winter goodies for yet another year.

Spring-like weather early in March heralded the promise of an early migration with a crop of Chiffchaffs around the second weekend. Landbirds were disappointing; but at sea, off Worthing Beach, were an Avocet on 21st, 18 Scaup on 22nd and 12 Garganey on 23rd all flying east.

Indifferent April weather was largely responsible for the spring that never was. Migrants arrived slowly but the best landbird was a Hawfinch calling at Hollingbury Golf Course on 12th. At sea, Pomarine Skuas passed Brighton Marina on 23rd and Worthing on 30th and in the early evening of the same day an eastbound Sabine's Gull excited at least one observer.

After a mini heatwave during the first week of May, the meteorological charts showed promise of favourable winds. Unfortunately the SE winds that we experienced were the wrong type of SE winds! Birds of the month were a Puffin east off Worthing on 1st; Little Egrets east there on 1st and 4th; a Quail calling on Sullington Hill on 27th and yet another Hawfinch, this time at Woodvale on 29th.

June and July were generally settled months, the latter remaining rather hot and dry. In June, a Rose-coloured Starling was present, but elusive, in Coldean from 12-14th. In July, a male Golden Oriole sang briefly in Withdean park on 2nd; an Osprey flew east over the Sanctuary on 30th; five Little Egrets flew west past Worthing on 2nd; and a Willow Tit was present at Woods Mill for much of the month.

August continued the high pressure dominance resulting in another hot and dry month. An Osprey passed over Sompting Brooks on 11th, a Marsh Harrier was noted over Sompting on 21st; and a Little Egret was present along the Lower Adur on 15th.

The long, hot summer broke during September bringing more typically English weather. The most notable record during the month was an adult female Red-backed Shrike at Sompting on 3rd. Other records included a westbound Osprey over Goring beach on 1st, an adult male with a ringtail Hen Harrier at Steyning Round Hill on 21st, and a Curlew Sandpiper on the Adur on 7th.

A nondescript October brought few goodies, except for a Short-eared Owl over No Man's Land on 21st and a calling Woodlark over Goring on 28th.

Unsettled weather during November produced some excellent winds for seabirds. Those who find Little Auk a rather difficult year tick should not have been disappointed this year, as aside from offshore sightings, a bird was present in Southwick Canal from at least 22-26th. Other interesting records were a female Velvet Scoter west off Shoreham on 3rd and a persistent observer found a Twite among a flock of Greenfinches and Linnets on Southwick Beach on 18th.

December blew hot and cold - predominantly the latter toward the end of the month leading to a small crop of interesting records. Surely the best Christmas present a Sussex birder could receive was the Black Guillemot in Brighton Marina from 23rd onwards - a rare feast in these parts! Other December records included a flock of four White-fronted Geese at Stretham on 9th, a male Goldeneye on the Adur on 11th, two Snow Buntings at Brighton Marina on 23rd/24th with a single female noted on 26th & 29th, and a Red-necked Grebe offshore there on 24th.

SYSTEMATIC LIST FOR 1995

This systematic list of birds in the Shoreham District is based upon records submitted by the following:-

SR Allen, A Benton, PM Brayshaw, J Carson, M Casemore, GL & M Champion, S Charlwood, AR Fenton, BF Forbes, LE Hemblade, CE Hope, RA Ives, H Jackson, LR Keen, I Lawes, JM & SP Maskell, L Morris, CA & PH Mulcock, Dr JA Newnham, M Russell, RJ Sandison, RM & SJD Shaw, DI Smith, Mr & Mrs J Steedman, C Upton, M Walford, AD, IJ & PJ Whitcomb, HMV Wilsdon.

See also acknowledgements in the Seawatching Report.

Abbreviations: ad = adult, BBRC = British Birds Rarities Committee, f = female, ha = hectare, imm = immature, km = kilometre, juv = juvenile, m = male, pr = pair, SOS = Sussex Ornithological Society, sp = summer plumage, wp = winter plumage, W=West etc, yr = year

'Downs' refers to the downland area between the Adur Valley and the A24, including Cissbury and Chanctonbury. References to **Worthing Beach** in seawatching data include all seawatch sites unless separately identified. 'Adur' refers to the river and associated mudflats between the footbridge and Shoreham Flyover.

0002 **RED-THROATED DIVER** *Gavia stellata*

Regular on passage and winter resident

Totals of birds passing Worthing Beach (all east) were as follows:-

	Jan	Feb	Mar	Apr	May	Sep	Oct	Nov	Dec
E	-	-	5	12	3	-	-	-	-

Peak spring movement here was 7E on Apr 23. Other spring records were 2 off Brighton Marina on Mar 11, 2 off Widewater on Mar 25, and 19E Brighton Marina on Apr 23.

Late year singles were reported all along the coast either offshore or passing and larger concentrations included 4 off Goring Beach on Nov 12 and 5 on Dec 9.

0003 **BLACK-THROATED DIVER** *Gavia arctica*

Fairly scarce passage migrant

Spring passage at Worthing produced monthly totals of 3E March, 1E April, and 2E May. Other records were 8E Brighton Marina on Apr 23, and a bird in full summer plumage off Widewater on May 31. Late year records were 1E Goring

Gap on Nov 25, and 1W Worthing Beach on Dec 8, and a single was off Palace Pier (Brighton) on Dec 23.

0004 **GREAT NORTHERN DIVER** *Gavia immer*
Rare visitor, 1-2 most years No records for 1995.

DIVER Species

Divers not specifically identified are lumped together as 'Diver species'
Monthly totals from Worthing Beach were:-

	Jan	Feb	Mar	Apr	May	Sep	Oct	Nov	Dec
E	2	3	33	24	15	-	-	-	-
W	-	-	1	-	-	-	-	-	-

Peak spring passage between Mar 10 and May 1 was 19E on Mar 22. Other spring records received were 33E Brighton Marina on Apr 23. Late year records were of single birds passing most coastal sites in Nov and Dec.

0007 **LITTLE GREBE** *Tachybaptus ruficollis*
Mainly winter visitor, occasional breeder

Regular early year records were of singles or pairs at Southwick Canal, Brooklands, New Salts Farm, and the Lower Adur River. Three birds were noted on floodwater in the Upper Adur Valley on Jan 22. Of interest: a pair with 3 juvs on Wiston Pond during the breeding season.

Late year records of singles or pairs were from Brooklands and Southwick Canal; and in Dec on the Adur, up to 4 on the Upper and up to 3 on the Lower.

0009 **GREAT CRESTED GREBE** *Podiceps cristatus*
Regular offshore for most of year

No early records were received but spring seawatches from Worthing Beach produced totals of 1E Mar, 2W Apr, and 3E May. Offshore: 2 on Apr 28/29, then 4 on Apr 30, increasing to 5 on May 2. Elsewhere: 1 off Brighton Marina on Mar 4 and 1E there on Mar 11.

Significant late year records were all in Dec, and included 7 off Goring on 9th, increasing to 9 on 10th, and 12 by 25th, 10 off Worthing on 17th, 4 off Widewater on 24th, and 8 near Shoreham Harbour entrance on 27th.

0010 **RED-NECKED GREBE** *Podiceps grisegena*
Rare visitor to area

Only one record: one off Brighton Marina on Dec 24.

0011 **SLAVONIAN GREBE** *Podiceps auritus*

Regular winter visitor offshore

The only spring record was a single off Brighton Marina on Apr 23, and 1E there the same day. Late year records were 5 off Goring on Nov 7 and 2 off Worthing Beach on Nov 10.

0012 **BLACK-NECKED GREBE** *Podiceps nigricollis*

Rare visitor, 1-2 only per year No records for 1995.

0020 **FULMAR** *Fulmaris glacialis*

Common spring passage migrant, no suitable nest sites

Early year records: a pair present near Brighton Marina and noted offshore there from early Jan. Passage movements noted from Worthing produced the following totals:-

	Jan	Feb	Mar	Apr	May	Jun	Jul	Nov	Dec
E	-	-	6	41	16	-	-	-	-
W	6	-	9	21	20	2	-	-	-

From Brighton Marina: 8E on Apr 14, 44E and W on Apr 23, and 30E on May 8. Inland records: 1W over St Anne's Well Gardens (Hove) on Mar 9, and 1W over a Goring garden on Jun 10.

0046 **MANX SHEARWATER** *Puffinus puffinus*

Fairly uncommon spring/autumn visitor

One record of a single east close to Worthing Beach on May 1 (BFF).

0071 **GANNET** *Sula bassana*

Regular in most months, peaking in spring

No early year records and spring seawatches from Worthing produced the following monthly totals:-

	Jan	Feb	Mar	Apr	May	Jun	Jul	Aug	Sep	Oct	Nov	Dec
E	-	-	5	64	44	-	-	-	14	50	-	-
W	-	-	-	46	27	-	-	-	-	-	-	-

Brighton Marina records were 29E on Apr 23 and 4E on May 21. Away from Worthing Beach, the only autumn record was of 7 off Goring on Oct 21.

0072 **CORMORANT** *Phalacrocorax carbo*

Common at coastal and some inland sites

Under-reported on seawatches but there were high counts at East Worthing sewage outfall with 53 on Oct 16 and 83 on Nov 19. Southwick Beach counts were 36 on Sep 22, 29 on Nov 8 and 17 on Nov 22. The only Upper Adur roost counts received were 130 on Nov 10 and 149 at dusk on Nov 18.

0080 **SHAG** *Phalacrocorax aristotelis*

Fairly uncommon winter visitor

Early year records: 1E Shoreham Harbour on Jan 22, 2 Southwick Canal on Mar 3 with one present there on Mar 11, 1W Brighton Marina on Mar 11, a single off Widewater on Mar 27, and 4E Brighton Marina on May 8. At the end of the year an adult was at Brighton Marina on Nov 26 and a single passed W off Goring Beach on Dec 19.

0098 **LITTLE BITTERN** *Ixobrychus minutus*

Extremely rare vagrant

A single reported at Shoreham Sanctuary in April. The recorder would welcome confirmation of this sighting.

0119 **LITTLE EGRET** *Egretta garzetta*

Once a rare vagrant, now annual in area

Singles E off Worthing Beach were noted on May 1 & 4. Later a grand total of 5 passed W there on July 2 (DAI, JAN), and a single was recorded along the Lower Adur River on Aug 15 (MCC). On Aug 21 a pair circled Shoreham Airfield before departing SW (PMB).

0122 **GREY HERON** *Ardea cinerea*

Common, with breeding colony in area

Spring seawatches at Worthing produced 2E on Apr 23, 1E on Apr 29, and 1W on May 6. Autumn monthly totals were 6W in Aug and 3W in Sep. Recorded in small numbers from all suitable habitat and noted occasionally over urban and downland areas. The Wyckham Wood heronry was not reported.

0152 **MUTE SWAN** *Cygnus olor*

Common breeding species

No significant early year counts were received. Spring seawatches at Worthing recorded 2W on Apr 14, 5E and 4W on Apr 28, and 3W on May 4. Brighton Marina recorded 3E on Apr 14. An interesting inland record was of 3NW over Benfield Valley at the same time on two consecutive evenings - Apr 14/15. Breeding records received were 1 pr New Salts Farm and 1 pr Brooklands which

raised at least 4 young. Doubtless there were others.

Post breeding counts were: 39 near Shoreham Railway Bridge on July 28 with 33 there on Aug 21, and 30 at Widewater on Aug 27. The late year Widewater total varied between 14 and 17 birds and elsewhere 2 birds were noted in Brighton Marina on Dec 9 and a single bird was on Hove Lagoon in Dec.

0153 BEWICK'S SWAN *Cygnus columbianus*

Small regular wintering herd

Noted only in the Upper Adur Valley with max monthly counts of 17 (Jan) and 41 (Feb). At the end of the year, there were 3 on Dec 23.

0159 WHITE-FRONTED GOOSE *Anser albifrons*

Rare winter visitor

The only records were: 4 at Stretham Manor (Upper Adur) on Dec 9 (3 ads + 1 juv - RAI), and 1 west over Hollingbury, on Dec 2.

0161 GREYLAG GOOSE *Anser anser*

Fairly scarce feral species

The only records received were 25E then N over St Anne's Well Gardens (Hove) on Mar 10 and 1 pr with 6 young at Wiston Pond on May 24.

GREY GOOSE species

A skein of 20 unidentified grey geese flew east very high over Brighton Marina on Mar 11.

0166 CANADA GOOSE *Branta canadensis*

Increasing in area, now breeding

There were no early year records then in spring 2 were seen over Shoreham Sanctuary on Mar 19, 15 actually on Widewater Lagoon on Mar 22, and 3W over Southern Cross (Portslade) on Apr 8. In the breeding season, 1 pr raised 8 young at Wiston. Later records were 1E Sheepcote on Jun 10, 2N over Worthing on Aug 29, and 7E over Withdean on Oct 31.

0168 BRENT GOOSE *Branta bernicla*

Common on passage, occasional winter flocks at coastal sites

Early year records comprised small flocks passing regular coastal seawatching sites. Monthly totals from Worthing Beach:-

	Jan	Feb	Mar	Apr	May	Sep	Oct	Nov	Dec
E	4	-	436	385	56	-	-	-	-
W	30	-	9	2	-	-	-	-	-

Peak movements were 136E on Apr 23 and 105E on Mar 23. Other spring records were: 48E Widewater on Mar 15 and 35E Brighton Beach on May 9. Brighton Marina recorded 48E on Mar 11, 231E on Apr 23 and 5E May 5. First returning bird was noted from Worthing Beach on Sep 21 and thereafter records referred again to small flocks passing coastal sites.

0173 SHELDUCK *Tadorna tadorna*

Increasing in numbers

Monthly totals passing Worthing Beach were:-

	Jan	Feb	Mar	Apr	May	Jun
E	-	-	17	17	11	-
W	19	-	1	11	11	-

Early year records received were: 3 Upper Adur Valley on Jan 22, 13E Brighton Marina on Apr 23, and 3E & 1W there on May 5. Late year records include 7W Goring on Oct 21, 16E Widewater on Nov 4, and 6 Adur Levels on Dec 28.

0179 WIGEON *Anas penelope*

Regular winter visitor

Early records were 100+ Upper Adur Levels on Jan 22 with 40 still present on Feb 4. Spring passage during March produced 12E Hove Beach on Mar 10 and the Worthing Beach total for the month was 45E, peaking with 38E on Mar 10. Late records for the month of Dec were 2W Worthing Beach on 17th, 5 Lower Adur (nr Rly. Br.) on 27th, 3 New Salts Farm on 28th, and 5 Upper Adur Levels on the same day.

0182 GADWALL *Anas strepera*

Uncommon in the area

The only records were 12E Hove Beach on Mar 10 and 2E Brighton Marina on Apr 23.

0184 TEAL *Anas crecca*

Regular in the area

Heavy rainfall in January caused flooding in the Upper Adur Valley resulting in a 40+ flock on 22nd. Spring seawatches produced 40E Hove Beach on Mar 10 and 2E Brighton Marina on Mar 22. The Worthing Beach totals were 89E in Mar and 5E & 2W in Apr, with a peak movement of 77E on Mar 10.

Records at the end of the year:- 3W Goring on Oct 21, 2 Adur Toll Bridge Nov & Dec, 30 Upper Adur Levels on Dec 9, 3 New Salts Farm on Dec 11 and 2 Ferring Rife on Dec 26.

0186 **MALLARD** *Anas platyrhynchos*

Common

Early year counts were 40 Brooklands on Jan 29 and a Jan-Mar total of 20 at New Salts Farm. An unusual mid-year record was of a pair regularly at Sheepcote. Late year counts at New Salts Farm produced totals varying between 21 and 27.

0189 **PINTAIL** *Anas acuta*

Regular winter visitor at coastal and inland sites

Spring seawatches on Mar 10 from Hove and Worthing Beaches produced totals of 40E & 82E respectively. Also noted were 2E at Worthing on Apr 29. Early records were 79 in a flooded field in the Upper Adur Valley on Jan 22 with 20 still present on Feb 4. On Dec 9 there were 10 in the Upper Adur Valley.

0191 **GARGANEY** *Anas querquedula*

Scarce passage migrant

In spring, a total of 12E were recorded from Worthing Beach on Mar 23. Of interest was a single male at Woods Mill on Feb 20 then intermittently from Mar 13 to Apr 3.

0194 **SHOVELER** *Anas clypeata*

Regular winter visitor

After 16E Widewater on Jan 4, 9 were noted with other duck species in flooded fields in the Upper Adur Valley on Jan 22 with 8 still remaining on Feb 4. In spring there were 14E Hove Beach on Mar 10, and the Worthing Beach total for Mar and Apr was 152E, with a peak passage of 146E on Mar 10.

0198 **POCHARD** *Aythya ferina*

Regular winter visitor in small numbers

Max monthly counts for Widewater and Brooklands were as follows:-

	Jan	Feb	Mar	Apr	Sep	Oct	Nov	Dec
WW	36	-	-	-	-	-	46	46
B'lands	41	40	-	-	-	19	-	-

The early year total probably comprised 56 birds taking into account movements between the two locations and based on counts from each within a 30 minute period.

0203 **TUFTED DUCK** *Aythya fuligula*

Declining winter visitor

The monthly counts at Widewater and Brooklands were as follows:-

	Jan	Feb	Mar	Apr	Aug	Sep	Oct	Nov	Dec
WW	2	2	2	-	-	1	-	-	-
B'lands	7	7	7	-	6	2	3	1	-

Birds were present at Brooklands from Aug 20 and the single bird at Widewater in Sep was present on 21st. Spring seawatches at Worthing Beach produced 2E on Mar 20 & 1W on Apr 24. Elsewhere were 4E at Widewater on Mar 13.

0204 **SCAUP** *Aythya marila*

Scarce winter visitor

In spring: a total of 18E Worthing Beach on Mar 22.

0206 **EIDER** *Somateria mollissima*

Regular off shore in winter and passage migrant

An imm male around Shoreham Harbour from Jan 2 - 22 was probably the bird subsequently reported from Brighton Marina until Apr 2. Spring passage was rather poor with 13E Worthing Beach on Mar 10, 10E there on Mar 23 and 6E Brighton Marina on Apr 23. Late year records were 4E Goring Beach on Nov 12, 1 off Worthing on Dec 17, 3 Shoreham Harbour on Dec 23, 2 off Goring on Dec 25, and an imm male at Brighton Marina on Dec 26.

0212 **LONG-TAILED DUCK** *Clangula hyemalis*

Rare winter passage migrant Not recorded in 1995.

0213 **COMMON SCOTER** *Melanitta nigra*

Common on spring passage

Monthly totals from Worthing Beach were:-

	Jan	Feb	Mar	Apr	May	Sep	Oct	Nov	Dec
E	-	-	876	731	819	-	-	-	-
W	1	-	3	31	6	-	38	-	-

Peak movements were 444 on Mar 22 and 287 on Apr 23. Other significant spring counts were totals of 117E Brighton Beach (Apr 26 - Jun 6) and at Brighton Marina, the March total was 198 and the May total was 88. The Apr peak was 498E on 23rd.

Nov records were 22 off Shoreham Fort on 6th, 10 off Goring Beach on 7th, and 6 off Hove on 21st. The Shoreham Fort/Harbour count was 20 on 19th.

0215 **VELVET SCOTER** *Melanitta fusca*

Fairly regular on passage

Spring movements from Worthing Beach were 3E on Mar 22, 4E on Mar 23, 9E on Apr 23, 1W on May 1 and 1E on May 31. At Brighton Marina: 15E on Apr 23 (including a flock of 8 birds) and 4E on May 3. Two late year records: a female W off Shoreham Fort on Nov 3 and 3E Brighton Marina on Dec 27.

0218 **GOLDENEYE** *Bucephala clangula*

Regular winter visitor in small numbers

No early year records nor spring movements. Late year records: a male on the Adur between railway and toll bridges on Dec 11 and 2E from Ferring Beach on Nov 26.

0221 **RED-BREASTED MERGANSER** *Mergus serrator*

Common offshore

Jan and Feb saw regular birds on Widewater Lagoon and Brooklands with max 4 at the former and 2 at the latter. Offshore at Widewater were 6 on Feb 12. Away from these sites, 14 were noted Southwick Canal east end on Feb 17. With the onset of spring up to 3 continued to visit Widewater until May 17. Spring passage as observed from Worthing Beach was as follows:-

	Mar	Apr	May	Peak movement was 90E on Mar 22. After a
E	234	178	11	redhead at Brooklands on Sep 7, scattered
W	18	13	-	sightings occurred along the coast but most no-
				table were 30+ off Worthing on Dec 17 and 20
				off Goring on Dec 25.

0223 **GOOSANDER** *Mergus merganser*

Rare winter visitor No records for 1995.

0231 **HONEY BUZZARD** *Pernis apivorus*

Rare vagrant No records for 1995.

0260 **MARSH HARRIER** *Circus aeruginosus*

Scarce passage migrant

One record - a single over Sompting on Aug 21 (PMB).

0261 **HEN HARRIER** *Circus cyaneus*

Passage and occasional winter visitor

One record: ad male and ringtail over Steyning Round Hill on Sep 21 (MCC).

0263 **MONTAGU'S HARRIER** *Circus pygargus*

Rare on passage No records for 1995.

0267 **GOSHAWK** *Accipiter gentilis*

Very rare

An adult female at Patching on Oct 31. Details forwarded to the SOS (BFF).

0269 **SPARROWHAWK** *Accipiter nisus*

Common

Now well established and recorded right across the region. A bird arriving from the sea at Worthing on Apr 25 was obviously a migrant. Specific breeding records came from Wild Park where 1 pr raised 2 young, Findon Valley where 3 prs were noted - (1 pair successfully raising 2 young), and Bevendean Down and Withdean Wood each with 1pr. Unconfirmed breeding records came from West Worthing, Mill Hill and Woods Mill.

0287 **BUZZARD** *Buteo buteo*

Regular in area

Only 2 records in the period Jan-Jun comprised singles over Blackpatch Hill (Findon) on Jan 14 and over Spithandle Lane (Steyning) on Apr 23. After a single at Michelgrove Farm on Jul 19, Aug records were 1W Broadwater on 18th, 2 Lancing Ring on 20th and 1 on 23rd. Late year sightings were singles at Stump Bottom on Sep 29, Lee Farm on Oct 29; Lychpole Hill on Nov 26 and Mill Hill on Dec 2. Three at Michelgrove Farm on Oct 13 with one on 31st.

0301 **OSPREY** *Pandion haliaetus*

Rare passage migrant

No spring records were received. In autumn: 1E over Shoreham Sanctuary on Jul 30 (JAN), 1W at Goring Beach (16.40-16.50hrs) on Sep 1 (DIS) and a single at Sompting Brooks on Aug 11.

0304 **KESTREL** *Falco tinnunculus*

Common and well established

Breeding records were received from 10 locations with the following known successes: 1 pr raised 2 young at Cissbury, 2 prs in Findon Valley raised 4 young, 1 pr at Highdown Hill raised 2 young, and at Woods Mill 1 pair successfully reared 4 young in an established nest box.

0309 **MERLIN** *Falco columbarius*

Regular in autumn/winter

Early year records, all in Feb were singles at Sheepcote on 4th & 21st and 1E at St Anne's Well Gardens (Hove) on 13th. Sep migrants were a single at Steyning Round Hill on 22nd with possibly the same bird seen at Cissbury the same day and a female at Lancing Clump on 29th. Single birds in Oct were noted from Cissbury on 8th and Mill Hill on 24th.

0310 **HOBBY** *Falco subbuteo*

Regular passage migrant, has bred

There were no Apr records and the first for the year was a single over a Portslade garden on May 3, followed by a single Beeding Brooks on May 8. Two other May records were from North Portslade on 19th and Highdown Hill on 29th. Between May 3 - Oct 8 seen from 15 locations with monthly totals as follows:-

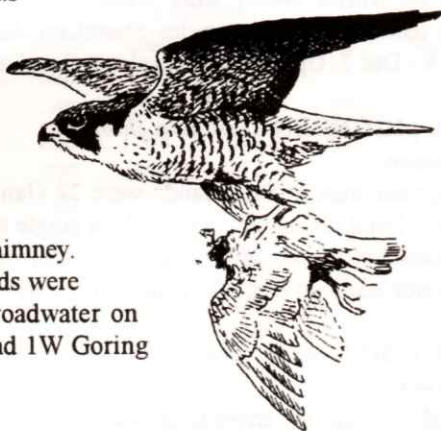
May	Jun	Jul	Aug	Sep	Oct
4	6	2	5	7	2

Last records: 1W Worthing Beach on Oct 7 and a juv Highdown Hill on Oct 8.

0320 **PEREGRINE** *Falco peregrinus*

Increasing in the area

Regular sightings along and in the vicinity of the Adur Valley, around Southwick Power Station and at West Pier probably refer to the Lower Adur pair which raised four young. Sadly, one of the birds broke its neck in the cement works chimney. Records which may refer to other birds were one over Coldean on Jun 13, 1S Broadwater on Jun 22, 1W Washington on Jul 10 and 1W Goring Hall on Nov 23.



0358 **RED-LEGGED PARTRIDGE** *Alectoris rufa*

Regular with hybridisation reducing true stock

Three records received - singles at Patcham Place on Mar 18 and Patching Woods on May 22. A covey of 6 at Michelgrove Farm on Oct 31.

0367 **GREY PARTRIDGE** *Perdix perdix*

Common

Early year counts were: 7 Goring Gap on Jan 7, 6 Cissbury on Jan 22, 2 prs Hollingbury Camp during Feb, and 2 Southwick Hill on Mar 12. Pairs noted in the breeding season were at Cissbury, Goring Gap, Southwick Hill, Sheepcote, Foredown Hill and Devil's Dyke.

Some sizeable coveys included 17 Cissbury on Aug 19, 10 Saddlescombe on Aug 26, 12 Lancing Clump on Nov 12, and 10 No Man's Land on Nov 19. At Goring Gap, 17 were noted on Oct 10 increasing to 28 on Nov 11 and 24 there on Dec 9.

0370 **QUAIL** *Coturnix coturnix*

Rare but regular summer visitor

One record - a single at Sullington Hill on the relatively early date of May 27.

0394 **PHEASANT** *Phasianus colchicus*

Common

Present in suitable habitat across the region. During the breeding season there were 2 prs at Wild Park and 1 pr probably bred at Woods Mill.

0407 **WATER RAIL** *Rallus aquaticus*

Regular winter visitor, may breed

Four records for year: singles Shoreham Airfield on Mar 24, New Salts Farm Nov 8 - Dec 7, Upper Adur Levels on Dec 9 and Broadmere Common on Dec 28.

0424 **MOORHEN** *Gallinula chloropus*

Common

Early year max at Brooklands were 22 (Jan) and 34 (Feb). Other records: 18 Falmer Pond on Jan 22 and, oddly, a single at Queen's Park on Jan 21. At least 4 prs bred at Woods Mill. Late year counts were 22 Falmer Pond on Nov 25 and 35 Brooklands on Dec 10. Unusually, 2 were at Hollingbury Camp on Dec 20.

0429 **COOT** *Fulica atra*

Common

Monthly counts for Brooklands were as follows:-

Jan	Feb	Mar	Sep	Oct	Nov	Dec
78	69	19	70	102	70	73

A single on Widewater Lagoon on Feb 6 is now unusual.

0450 OYSTERCATCHER *Haematopus ostralegus*

Common

Early year maxima at Goring wader roost were 71 (Jan), 37 (Feb), and 22 (Mar); late year maxima were 15 (Nov) and 42 (Dec). Spring seawatches from Worthing produced totals of 19E/5W in Mar, 43E/28W in Apr, and 50E/39W in May. Other counts of note: 26 Brighton Marina on Jan 21 and 53 on Sep 7.

0456 AVOCET *Recurvirostra avocetta*

Uncommon, but regular passage wader

1E Worthing Beach on Mar 20 was the only record.

0469 LITTLE RINGED PLOVER *Charadrius dubius*

Irregular in recent years

Two records from Worthing Beach of 1W on Apr 17 and 3 there on May 1.

0470 RINGED PLOVER *Charadrius hiaticula*

Common, with regular breeding attempts

Monthly maxima at Goring Gap for the early months were 96 (Jan), 57 (Feb), and 9 (Mar). A count of 190 was made on Shoreham Beach on Jan 31. Breeding season records were: 5 prs Widewater, 2 prs East Worthing Beach, 5 prs Brighton Marina where 1 pr successfully raised 4 young, and 2 prs Southwick (1 with chick) Jul 19.

Some later year counts were 186 around the Shoreham houseboats in Aug, 64 Brighton Marina on Nov 26 with 57 there on Dec 25. The Goring maxima were 100 (Aug), 105 (Nov), and 112 (Dec). Unusual were 5 at Sheepcote on Jun 3.

0485 GOLDEN PLOVER *Pluvialis apricaria*

Regular winter flocks

Records only from Upper Adur Levels during the early months with up to 60 in Jan and 150 in Feb but only 6 on Feb 27. Miscellaneous records were 11E Worthing Beach on Mar 19 and a single on Worthing Beach on the late date of May 20. First bird of autumn was at Lancing Ring on Aug 30 but nothing then until Dec when a small flock began to build along the Upper Adur. Cold weather brought a max. of 55 at Shoreham Airfield and the River Adur and 54 were on Thundersbarrow Hill on Dec 26.

0486 GREY PLOVER *Pluvialis squatarola*

Regular coastal winter flocks and passage migrant

Wader counts from the Adur Estuary and Goring Gap produced the following monthly max.: -

	Jan	Feb	Mar	Aug	Sep	Oct	Nov	Dec
Adur	6	4	-	1	-	-	6	4
Goring	163	200	130	-	-	-	107	195

Seawatching from Worthing Beach was unremarkable, the only noteworthy count being of 31E on May 1, which contributed to the monthly total of 83E for that month.

0493 **LAPWING** *Vanellus vanellus*

Common but now rare as a breeding species

Early year counts from the Upper Adur Levels were 2500 (Jan) and 3000 (Feb). The Lower Adur/New Salts Farm count for Feb was 1100. A single flock of 700 was noted by the Houseboats on Feb 12. During the breeding season displaying pairs were reported from Cissbury and Sullington Hill. Post-breeding flocks included 25NE over Pyecombe on Jun 25 and 75 Cissbury in July.

The Lower Adur flock began to build with 50 on the Airfield on Jul 30; 150 New Salts Farm on Aug 27 increasing to 190 on Sep 2 then climbing to 2500 by Dec. Other late counts were 3000 Goring Gap area on Dec 23 and a hard weather movement of 400N over Goring on Dec 24 and regular small parties W on 25th.

0496 **KNOT** *Calidris canutus*

Regular passage wader

Spring totals from Worthing Beach were 11E Apr and 15E May. There were 13E Widewater on May 22. Autumn records were a single Widewater on Aug 26, 2 Lower Adur for much of Sep, and a further single at Widewater on Oct 10.

0497 **SANDERLING** *Calidris alba*

Common winter wader and passage migrant

Consistent counts from Goring wader roost produced the following totals:-

	Jan	Feb	Mar	Aug	Sep	Oct	Nov	Dec
Goring	44	45	51	1	-	-	63	34

Early year counts received were 20 Widewater Beach on Feb 27 and 6 Lancing Beach on Mar 17th. Spring seawatches from Worthing gave the following monthly totals:-

	Mar	Apr	May	
E	62	70	114	Peak movements were 38E on Mar 22; 35E on May 2 and 34E on Apr 29.
W	9	27	6	

0501 **LITTLE STINT** *Calidris minuta*

Irregular passage wader

No spring records. Widewater records were 2 on Aug 7 and later a single on Sep 24/25. Elsewhere were a single Goring on Aug 13 and Lower Adur on Sep 13, the latter joined by another on Sep 15.

0509 **CURLEW SANDPIPER** *Calidris ferruginea*

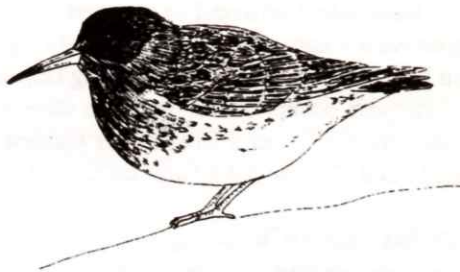
Irregular passage wader

One record: a single on Lower Adur on Sep 7.

0510 **PURPLE SANDPIPER** *Calidris maritima*

Annual small wintering flocks

Present in the early months in Shoreham Harbour from Jan 1 - Apr 9 with a max of 5 on Jan 20. Noted between Feb 11 and May 11 at Brighton Marina with 4 usually noted in Feb & Mar, 3 in Apr but 5 on May 3.



At the end of the year a max of 5 were noted at Shoreham Harbour from Oct to Dec and at Brighton Marina noted from Oct 9 until end of Dec (max 7 on Nov 11). The only other record was 1W Goring Beach on Nov 4th.

0512 **DUNLIN** *Calidris alpina*

Commonest wader in the area

Significant early year counts were 200 Worthing Beach on Jan 4, and 267 Shoreham Beach on Jan 11. Later in the year the Shoreham Beach count was consistently around the 200 mark.

No significant counts were received from the Adur Estuary but the Goring Gap monthly maxima were as follows:-

	Jan	Feb	Mar	Aug	Sep	Oct	Nov	Dec
Goring	846	742	92	-	-	-	176	850

Spring seawatches from Worthing beach produced the following monthly totals:-

	Mar	Apr	May
E	33	75	67
W	3	-	2

0517 **RUFF** *Philomachus pugnax*
Irregular winter, passage migrant

Two records: 1 Upper Adur Levels on Jan 16 and 1E Worthing Beach on Apr 28.

0518 **JACK SNIPE** *Lymnocyrtus minimus*
Winter visitor in small numbers

No early year records. Noted along Ferring Rife were singles on Nov 22, Dec 5 and Dec 15.

0519 **SNIPE** *Gallinago gallinago*
Common outside breeding season

Lower Adur counts received for the early months were 28 by Houseboats on Jan 8, 12 New Salts Farm on Feb 4/5, and 100 by Houseboats on Feb 12. The only Upper Adur count was 142 on Jan 6. Along Ferring Rife were 25 on Jan 10 and 9 on Mar 19, also there were 2 Goring Gap on Mar 19.

Late year counts on Ferring Rife were 3 on Dec 15 and 8 on 26th. Other records were 1N over a Broadwater Garden on Aug 28, 1N over Wild Park on Aug 22 and 32 New Salts Farm on Dec 24.

0529 **WOODCOCK** *Scolopax rusticola*
Winter visitor and passage migrant

Three records received for the beginning of the year were singles at Cissbury on Feb 8, Woods Mill on Mar 10, and north over Brunswick Square (Hove) on Mar 24. In December, a single flew over the A27 at Clapham on 10th and Woods Mill received 3 separate birds despatched by the RSPCA on 6, 7 & 9th. All were later released.

0532 **BLACK-TAILED GODWIT** *Limosa limosa*
Uncommon in area

One record: 7E Worthing Beach on Apr 29th.

0534 **BAR-TAILED GODWIT** *Limosa lapponica*
Common passage wader

Spring seawatching totals at Worthing Beach were 1830E in Apr and 598E in May. Peak movements were 678E on Apr 30, 413E on Apr 27 and 406E on Apr 29. Brighton Marina saw 57E on May 3 and on the same day there was an unusual sighting of 15E over Hollingdean (Brighton).

Later in the year singles were noted at Goring Beach on Oct 5 and at Goring Wader roost on Dec 9.

0538 **WHIMBREL** *Numenius phaeopus*

Common on spring passage

The recorder would be interested in supporting notes for a record received of 1E at Shoreham Harbour on Mar 10. General arrivals occurred after Apr 16 with a 1NE over Hollingdean and small flocks passing coastal locations. There were 2 at Shoreham Rly Bridge on Apr 23 and 3 at the Toll Bridge on May 5. Truly inland birds were 3 Upper Adur Levels on May 7. Spring totals from Worthing Beach were 218E in Apr and 54E in May with a peak of 76E on Apr 28. After 4W over Broadwater on July 27 were 3S over Goring Gap on July 27, 1 New Salts Farm on Aug 15 and 2 Goring Beach on Aug 16.

0541 **CURLEW** *Numenius arquata*

Common on passage

Spring seawatching from Worthing Beach gave monthly totals of 27E in Mar, 5E in Apr and 1E in May. Peak movement was 22E on Mar 10. Other records for the year were 1N Hollingbury Camp on Jan 7, 1W Broadwater on Jul 29, and singles at Lancing Ring on Aug 30 and Sep 9.

0546 **REDSHANK** *Tringa totanus*

Common

The only significant count was 100 at New Salts Farm on Feb 4. The Lower Adur leucistic individual was noted most of the year. Lower Adur counts produced around 50 birds for the early and late months and the only significant Goring Gap count was 25 in Feb.

0548 **GREENSHANK** *Tringa nebularia*

Regular passage wader

Noted on spring passage from Worthing Beach between Apr 28 and May 4 with a total for period of 11E. The only other spring record was a single along the Adur at Upper Beeding on Apr 30. Autumn passage produced odd singles along the Lower Adur during Aug and Sep and at New Salts Farm were singles on Sep 17 & 19 with 2 there on Sep 27.

0553 **GREEN SANDPIPER** *Tringa ochropus*

Regular wintering wader

Early year Upper Adur maxima were 5 in Jan and 4 in Feb. A bird was heard calling at Brighton Marina on May 3. Late year records from the Upper Adur were 1 on Nov 18, 2 on Dec 17 & 23 and 4 on Dec 28.

0556 **COMMON SANDPIPER** *Actitis hypoleucos*

Common passage wader, occasionally over-wintering

A bird was present along the Lower Adur throughout Feb/Mar. Spring records were 1 at Upper Beeding on Apr 30, 1E Worthing Beach on May 5, and 1 at Brighton Marina May 5-8. Autumn records from the Lower Adur/New Salts Farm area indicate at least 2 present from Aug 21 to the end of Sep, but 4 were noted New Salts Farm on Sep 13. The last autumn bird was at New Salts Farm on Oct 7.

0561 **TURNSTONE** *Arenaria interpres*

Passage wader and regular winter visitor

Monthly maxima from Goring Gap wader roost were:-

	Jan	Feb	Mar	Aug	Sep	Oct	Nov	Dec
Goring	27	7	12	-	-	10	14	5

Other counts were max 25 Shoreham Fort - Jan, Feb & Nov with 34 there on Dec 12. Spring seawatching totals from Worthing were:-1E/15W in Mar, 41E in Apr, and 48E/1W in May, and from Brighton Marina 11E on May 5.

0565 **GREY PHALAROPE** *Phalaropus fulicarius*

Very rare visitor

A well-watched 1st winter was in Shoreham Harbour, Jan 17 - 21 (BFF et al).

0566 **POMARINE SKUA** *Stercorarius pomarinus*

Regular on spring passage

From Apr 23 to May 14 a total of 49E were reported. This total comprised: from Brighton Marina 2E on Apr 23, 1E on May 3, and 2E on May 8; and from Worthing 4E on Apr 30, 24E on May 2, 1E on May 6, and 15E on May 14.

0567 **ARCTIC SKUA** *Stercorarius parasiticus*

Regular spring and autumn

Early year records were from Worthing Beach 2E on Jan 4 and 1E on Jan 21. Spring total from Worthing Beach between Apr 22 and May 29 was 32E/3W with a peak of 11E on Apr 23. Other spring records were from Brighton Marina 27E on Apr 23 and 1E on May 3 and from Widewater 1E on May 15. Of interest was 1E from Worthing Beach on Jun 30. Two autumn records:- 1W Goring Beach on Sep 1 and 1E Worthing Beach on Oct 1.

0569 **GREAT SKUA** *Stercorarius skua*

Regular on passage in small numbers

A small number of skuas wintering in the Channel contributed to the sightings

of this and the previous species. On Jan 4, 1E was seen from Worthing Beach. Spring records (all 1E) were from Worthing Beach on Apr 14 & 30 & May 11, and from Brighton Marina on May 8.

0575 **MEDITERRANEAN GULL** *Larus melanocephalus*

Increasing numbers in area

The overall picture of this species within our recording area is difficult to define with the 'resident' birds frequently supplemented by migrants and occasional visitors. In the early months the usual ringed bird was present during Jan & Feb (at least) around Shoreham Harbour where at least two 1st winter birds and two different adults were also seen. A proliferation of 1st winter birds in the early months included singles at Goring Gap on Jan 28 and Mar 18, Hove Lagoon Feb 13 - Mar 10, Hollingdean Feb 24 - Mar 10, and interestingly at Standean (5 miles inland) on Mar 29. Another resided in Brighton Marina from Mar 27 - Apr 12.

Spring seawatching produced 7E Brighton Marina on Apr 23 (mainly 1st yr) with a further 9E there on May 3 (all 1st yr). There were 4E there on May 5 and 2W Worthing Beach on May 27. Other spring records were 1 ad Shoreham Harbour on Apr 13 and a 1st yr on Shoreham Airfield on Apr 22/23.

An unringed adult appeared on the Adur on Jul 9; then the ringed Harbour bird reappeared on Aug 7 remaining until the end of the year and was joined by 2 ads, two 2nd yrs and a 1st yr on Sep 1/2 and an unringed adult on Oct 25. Other autumn/ winter records were of single adults at Worthing Beach on Sep 27 and Brooklands on Oct 7.

0578 **LITTLE GULL** *Larus minutus*

Regular on spring/autumn passage, occasional winter visitor

There were a handful of records for the early months. A 1st yr around Shoreham Harbour from Jan 14 - 26 was joined by an adult on Jan 20. A further (or same) adult was present on Feb 3 and it may have been this bird at Worthing Beach the next day. Other records were of single 1st yr birds at Goring Gap on Feb 25 and Shoreham Airfield on Mar 18. Monthly spring totals from Worthing Beach were 6E Mar, 79E/6W Apr, and 60E May. Peak movement between Mar 22/May 4 was 60E on Apr 23. On the same day, there were 17E at Brighton Marina. An adult was at Southwick Power Station from Jul 6 - 31 and a late record was from Shoreham Harbour entrance on Dec 27.

0579 **SABINE'S GULL** *Larus sabini*

Rare passage migrant

A single, probably 1st summer, passed E off Worthing Beach at 18.35 on Apr 30 (DIS). Details forwarded to SOS.

0582 **BLACK-HEADED GULL** *Larus ridibundus*

Common

Spring passage at Worthing Beach produced the following totals:-

	Mar	Apr	May
E	364	423	646

Specific counts received included 348 W 22 32 29

Goring Gap on Jan 28 and maxima of 250

(Nov) and 150 (Dec) at Wild Park. Members should exercise caution over a leucistic individual reported from Worthing Beach. This bird sports a pure white mantle and lacks dark eye spot and any black in primaries.

0590 **COMMON GULL** *Larus canus*

Common in winter

Monthly totals for spring passage from Worthing Beach were 299E Mar, 18E Apr, and 14E May. A total of 70E was recorded at Brighton Marina on Apr 23. Specific counts were 667 Goring Gap on Jan 28 and 700 Cissbury on Oct 14.

0591 **LESSER BLACK-BACKED GULL** *Larus fuscus*

Common in winter, now breeding in small numbers

No early year counts were received and the only significant spring count was 6E Worthing Beach in May. During the breeding season 2 prs were holding territory in South Lancing, 1-2 prs in central Brighton, and up to 3 prs in the Palmeira area of Hove between Mar 27 - Sep 15. A late year count of 20 was received from Goring Gap on Nov 4. Of interest, an adult showing the characteristics of the Scandinavian race *fuscus* was at Sheepcote from Jun 6 - 13.

0592 **HERRING GULL** *Larus argentatus*

Common, expanding breeding population

A count of 340 was reported between Brooklands and Goring Gap on Jan 28. Breeding recorded across the coastal strip at suitable rooftop locations.

YELLOW-LEGGED GULL *Larus argentatus michahellis*

Regular autumn flock

Seen along the Lower Adur from early Jul - Oct 22; max count was 28 in a field near Cuckoo's Corner on Jul 31. Thereafter counts of up to 5 were normal.

0598 **ICELAND GULL** *Larus glaucooides*

Rare winter visitor No records for 1995

0599 **GLAUCOUS GULL** *Larus hyperboreus*

Rare winter visitor No records for 1995

0600 **GREAT BLACK-BACKED GULL** *Larus marinus*

Fairly common

The only counts received were from Lower Adur - 63 on Aug 27 and 76 on Sep 1.

0602 **KITTIWAKE** *Rissa tridactyla*

Common on passage

Monthly totals from Worthing Beach were:-

	Jan	Feb	Mar	Apr	May	Sep	Oct	Nov	Dec
E	44	-	16	6	18	-	-	-	-
W	3	-	-	56	8	-	-	-	-

Peak movement was 47W on Apr 28. Spring movements noted at Brighton Marina were 45E on Apr 23 and 8E on May 8. No late year records have been received but early year records were 1 in Shoreham Harbour Jan 2 - 5, 8 Brighton Marina on Mar 4, and a partially oiled adult on Widewater on Mar 18.

0611 **SANDWICH TERN** *Sterna sandvicensis*

Common on passage

First for the year were 2E Brighton Marina and Worthing Beach on Mar 22.

Spring totals at Worthing Beach as table:-

	Mar	Apr	May
E	13	738	531

Peak movement was 217E on Apr 13, which was also the peak day at Brighton Marina with 250E. An unremarkable autumn passage saw regular sightings during Sep-mid Oct and the last was at Shoreham Fort on Nov 8.

0615 **COMMON TERN** *Sterna hirundo*

Common on passage

Spring movements of unidentified birds were reported from Brighton Marina with 33E on May 3 and 6E on May 5 & 8. In autumn there were 60 in Shoreham Harbour on Aug 31 and up to 3 during Sep and finally 1 there on Oct 6/7.

0616 **ARCTIC TERN** *Sterna paradisaea*

Seen on passage but rarely split from Common Tern

Specifically identified birds passing Brighton Marina were 1E on Apr 13, 5E on Apr 23, and 1E on May 8.

COMMON/ARCTIC TERN

First for the year (apart from the Arctics on Apr 13) were passing Brighton Marina and Worthing Beach on Apr 23. Spring totals from Worthing Beach

from Apr 23 - May 27 were 2112E/11W in Apr and 484E /14W in May with a peak of 1283 on Apr 29. Notable movements from Brighton Marina were 47E on Apr 23 and 30E on May 21. No autumn records have been received.

0624 **LITTLE TERN** *Sterna albifrons*

Fairly common on passage

First for the year were 2E Worthing Beach on Apr 22 then monthly totals up to May 21 were 97E/6W in Apr and 289E/1W in May with a peak of 63E on Apr 30. Movements from Brighton Marina were 3E on Apr 23, 5E on May 3, and 16E on May 5. No autumn records were received.

0627 **BLACK TERN** *Chlidonias niger*

Regular on passage

A poor spring with 2E Worthing Beach on Apr 29, 1E there on Apr 30, and 2E on May 1. In addition was 1E at Brighton Marina on May 3. In autumn a single in Shoreham Harbour from Aug 28 - 31 was joined by a second on the last day, then 1W at Ferring on Sep 2, 2 Shoreham Harbour and Brighton Marina on Sep 7, and finally a single at Shoreham Harbour on Oct 4.

0634 **GUILLEMOT** *Uria aalge*

Regular in winter

Early year records were of singles Brighton Marina on Jan 1 and Shoreham Harbour Jan 22 - Feb 3. After a single in Shoreham Harbour on Aug 22 there were no records until Nov then 3W Shoreham on 3rd and 1E Hove on 21st. In Dec there were 2 Brighton Marina from 24 - 26 and 5 there on 27th.

0636 **RAZORBILL** *Alca torda*

Regular offshore

The only early year records were singles at Southwick on Jan 26 and passing Worthing on an unknown date in Jan. Spring movements were 2E Worthing Beach on Apr 14 & 29 and 1E there on May 1. Offshore were singles from Brighton Beach on Apr 28 and Brighton Marina on May 3. Later in the year a bird was noted intermittently at Shoreham Harbour between Oct 14 and 26 then 1W there on Nov 3 and 1E Brighton Marina on Dec 24.

0638 **BLACK GUILLEMOT** *Cephus grylle*

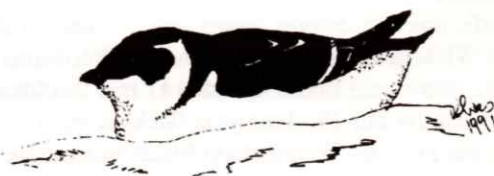
Extremely rare winter visitor

A bird well seen in Brighton Marina on Dec 23, remaining in the area to the year's end (PJW, IL).

0647 **LITTLE AUK** *Alle alle*

Very rare autumn migrant

A bumper autumn for this species - all records occurring during Nov. On 3rd, 2 birds flew into Shoreham Harbour, circled the lifeboat station then return to the sea; and on the



same day 1E was noted. Singles passed Worthing on 4th (W then E), 5th (E) and 18th (W) and there were 2E at Hove on 21st. There was a well-watched bird in Southwick Canal 22nd - 26th (HJ, BFF et al). It is uncertain how many of these records (other than the last) have been submitted to SOS.

0654 **PUFFIN** *Fratercula arctica*

Extremely rare winter migrant

1E with Razorbill, Worthing Beach on May 1, details to SOS (BFF, DIS).

AUK Species

A total of 23 unidentified auks passed Worthing eastbound on Jan 4 and monthly totals there for spring were 2E/5W in Apr and 2W in May. At Brighton Marina 1E passed on Apr 23 and May 8.

0668 **STOCK DOVE** *Columba oenas*

Common breeding species

Breeding season records were: 3 prs Wild Park and Sheepcote, 2-3 prs Woodvale and 1 pr Toads Hole Valley and Woods Mill. A regular flock of between 4 and 10 was present at Goring Gap from Jan - Jul and a count of 60 was reported from Mill Hill on Feb 3. Late year counts were: 70 Adur Levels on Nov 10, 21 Lychpole Hill on Nov 26 and montly totals at Withdean Park for Nov and Dec were 6 and 2 respectively.

0670 **WOODPIGEON** *Columba palumbus*

Abundant

Breeding season counts were: 46 prs Wild Park, 18 prs Bevenden Down, 10 prs Whitehawk Hill, 4 prs Eldred Ave Woods (West Dene) and 2 prs Toads Hole Valley. Two early year counts were 250 Adur Valley on Feb 12 and 200 Lancing College on Mar 18. Specific late year counts for Nov were 54 Wild Park, 36 Brighton Cemeteries and 38 Withdean Park, while Dec counts for the same were 62, 57 and 27 respectively. At Hollingbury Camp an easterly movement of 360 in 4 flocks occurred on Oct 25 and a N/NW movement of 130 in 4 flocks there on Nov 4.

0684 **COLLARED DOVE** *Streptopelia decaocto*

Common

Specific breeding season counts were: 26 prs Wild Park, 4 prs Bevendean Down, 3 prs Whitehawk Hill, 2 prs Withdean Wood and 1 pr Eldred Ave Woods (West Dene). Early year flocks included 11 in a Withdean garden on Jan 5 and 25 Mile Oak Farm on Jan 28. Late year flocks were: 13 Preston Park on Nov 21 but 30 there the next day, 22 Patcham Place on Nov 29, up to 11 Brighton Cemeteries through Dec and at Withdean Park monthly maxima for Nov and Dec were 8 and 7 respectively.

0687 **TURTLE DOVE** *Streptopelia turtur*

Summer visitor, probably declining

First for year was 1N Shoreham Airfield on Apr 28, then noted Foredown Hill and Fulking Down on May 8 and Hollingbury Camp on 9th. Breeding season records came from: Golding Barn, Lychpole Hill, Southwick Hill, and Woods Mill (probable). Immediate post-breeding sightings were of pairs at Shoreham Sanctuary (Jun 25) and Cuckoo's Corner (Jul 11). Noted sporadically through Aug and early Sep with Lancing Ring totalling 21 from Aug 2 - Sep 13 peaking at 9 on Sep 9. Last records were from Sompting Church and West Lane (Sompting) on Sep 19.

0712 **RING-NECKED PARAKEET** *Psittacula krameri*

Small breeding colony

The status of the breeding colony at Hollingbury is now at its lowest level with just the one pair raising one young in Burstead Woods. Three birds were noted all year around the area. Other records were: 2 Woodvale on Jan 28, 1E over a Worthing garden on May 5, with 1W on May 11, 1 over Hove Fire Station on Jul 18, 1W West Dene on Sep 28, and over a Lancing garden on Jul 13 & Sep 27/28.

0724 **CUCKOO** *Cuculus canorus*

Fairly common breeding summer visitor

First for the year was at Hollingbury Camp on Apr 19, thereafter singles at Small Dole on Apr 29, Beeding Hill and over a West Worthing garden on Apr 30, East Worthing Beach on May 2, and Shoreham Airfield on May 5. Noted in the breeding season along Upper Adur Levels, Toads Hole Valley, Golding Barn, Patching Woods, Newtimber Hill, Cissbury Ring, and Woods Mill where juvs were noted. No records received after Jun 25 (Golding Barn).

0735 **BARN OWL** *Tyto alba*

Possible breeding population, declining

The only known apparent resident is in the Small Dole area. Other records were

1 Stretham Manor (possibly the resident) on Feb 24, 1-2 Shoreham Airfield (Mar 16 - Apr 4), 1 Claygate Lane (Storrington) on Apr 29, and 1 Mill Hill on Sep 22.

0757 LITTLE OWL *Athene noctua*

Small breeding population

Resident at Golding Barn and noted in the breeding season at Standean, around Beeding Cement Works, and at Hollingdean between May 17 and Jun 23. Early year sightings were of singles at Upper Adur Valley on Jan 2, Wappingthorn on May 18, and Stump Bottom on May 26. Further sightings were 1 Small Dole area on Aug 7 and 18, 2 prs Michelgrove Farm on Oct 13 and 1 pr Patching on Oct 31. A bird was also noted regularly at Hollingbury Camp.

0761 TAWNY OWL *Strix aluco*

Breeds in both urban and rural situations

Resident and probably bred Woods Mill, Bramber Castle area, Shoreham Sanctuary, Storrington, Central Worthing, Goring Wood, and Portslade Old Village. Also a pair were noted near Beeding Cement Works in late Mar. Other sightings were 2 in a Broadwater garden on Feb 12, 2 in a Worthing garden on Jul 11, a single at Hollingbury Camp Aug 2, 16 and Sep 15, 1 calling in a Broadwater garden (where not common) on Nov 16/Dec 17 and a bird calling at Stretham Manor on Dec 3 was noted in an owl box on Dec 28.

0767 LONG-EARED OWL *Asio otus*

Small winter population

A bird was flushed from a hedgerow along the Upper Adur Valley on Jan 16, one was noted on the Downs above Brighton on Mar 20 and a max of two noted at a regular roost from Feb 18 - Apr 11. There is a further record of one in our area Feb 9 - Apr 10.

0768 SHORT-EARED OWL *Asio flammeus*

Migrant and occasional winter visitor

Only record: one in the Chanctonbury/No Man's Land area on Oct 21.

0778 NIGHTJAR *caprimulgus europaeus*

Rare summer migrant, formerly bred

The only record was on the late date of Oct 25 at Wild Park.

0795 SWIFT *Apus apus*

Common and widespread

First was over Hollingdean on Apr 20 followed by 1E Brighton Marina on Apr 23, 1 New Salts Farm on Apr 30 and 1 Worthing on May 1. Thereafter a more

general arrival occurred with May flocks including 250+ Wild Park on 27th and 250 Beeding Hill on 29th. On Jun 12, 604E passed Goring Gap in 1½hrs during stormy conditions.

Bred right across the region but the only report was of 25 - 30 prs in the Broadwater area. Some late Jul flocks included: 1000W Broadwater on 29th and 500 on 31st, 149 Sompting Downs on 30th, 100 Toads Hole Valley on 15th and 70 Hangleton Road on 30th. Movements continued into Sep with the last at Cissbury on 21st.

0831 **KINGFISHER** *Alcedo atthis*

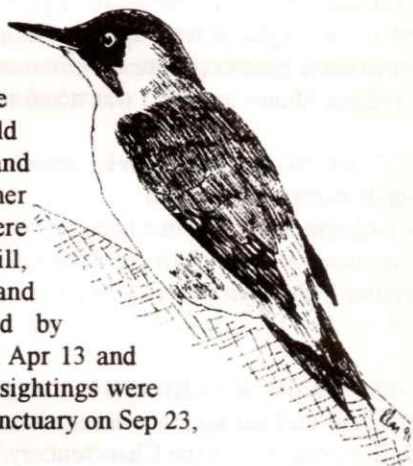
Breeding in small numbers, winter visitor

Resident and bred Woods Mill. Resident and probably bred Lower & Upper Adur Valley and Ferring Rife. Miscellaneous sightings were from Shoreham Harbour between Sep and Nov, Widewater on Nov 4 and 8 and dates in Dec, and Brighton Marina from Nov 26 to year end.

0856 **GREEN WOODPECKER** *Picus viridis*

Regular breeding resident

Breeding season records were 3 prs Findon Valley where 1 pr raised 1 young, 1-2 prs Goring Wood, 1-2 prs Ferring Rife where a juv was noted and 1 pr each at Wild Park, Withdean Wood, nr Woods Mill and Devil's Dyke where 2 juvs recorded. Other regular sightings throughout the year were from Highdown Hill, Steyning Round Hill, Brighton Cemeteries, Stretham Manor and Patching Wood. Sightings considered by observers as usual were at Preston Park on Apr 13 and Sheepcote on May 8. Other miscellaneous sightings were 5 at Waterhall on Aug 26, 2 at Shoreham Sanctuary on Sep 23, and 1 in a Worthing garden on Dec 28.



0876 **GREAT SPOTTED WOODPECKER** *Dendrocopus major*

Regular breeding resident

Breeding season records comprised pairs at Wild Park, Findon Valley, Washington Common, Highdown Hill, Warren Hill and Hoe Wood. Pairs at Withdean Wood and Devil's Dyke each raised at least 1 young. Other regular sightings throughout the year were from Cissbury, Woodvale Crematorium, Patching Woods and Woods Mill. Further records were singles at Chanctonbury

Ring on Jun 24. Shoreham Sanctuary on Oct 8, Goring Gap on Oct 18. Balfour Rd (Brighton), and Ferring Rife on Nov 22.

0887 LESSER SPOTTED WOODPECKER *Dendrocopus minor*

Scarce, has bred

A good year at Woods Mill where recorded on 14 dates covering Mar, Jul, Aug, Sep & Nov. The only other record was a female at Highdown Hill on Jul 1.

0974 WOODLARK *Lullula arborea*

Rare migrant

1W, calling at Goring Gap with a heavy Skylark movement on Oct 28 (DIS).

0976 SKYLARK *Alauda arvensis*

Common

Specific early year counts were: 40 Myrtlegrove Farm (Patching) on Jan 14, 50 Sheepcote on Mar 11 and 32 Hollingbury Camp on Mar 10. Breeding season counts were: 20 prs Highdown Hill, 15 prs Foredown Hill, 10 prs each Bevendean Down and Goring Gap, 8 prs each Southwick Hill and Wild Park, and 3 prs Whitehawk Hill. Autumn peaks at Hollingbury Camp were 40 on Oct 20, 85 on Oct 22 and 50 on Oct 27.

0981 SAND MARTIN *Riparia riparia*

Summer migrant bred at one site only

First for the year was 1N Widewater on Mar 24, followed by 4 Sandgate Park on Mar 25. The only count at the Sandgate Park site was 30 birds on Apr 9. An apparently unremarkable autumn with the only sizeable counts being 16 Cuckoo's Corner on Jul 24 and 20 Goring Gap on Sep 1. Lancing Ring total between Aug 2 and Sep 12 was 43 with a peak of 22 on the last date. Last record was 5 Hollingbury Camp on Sep 14.

0992 SWALLOW *Hirundo rustica*

Common summer visitor

First for the year was a single over Lychpole on Apr 2, followed by one at Shoreham flyover on Apr 3. Spectacularly unreported for the remainder of the spring passage, the only breeding season record was of 2 prs at Saddlescombe.

Sizeable autumn gatherings/movements included 1000+ at Sheepcote on Sep 16 and at Withdean on Sep 20. Regular counts between Aug 1 and Sep 13 produced totals of 3240 at Lancing Ring, 2312 at Sompting Downs and 1150 at Sompting Brooks. Hollingbury Camp peak was 850 on Sep 23. Late records were 2 New Salts Farm and 5 Goring Gap on Oct 22, and 1 Hollingbury Camp on Oct 31.

1001 HOUSE MARTIN *Delichon urbica*

Summer visitor

First for the year was 1W Shoreham Airfield on Apr 12, then 2N Southwick Hill on Apr 16. Breeding season records were: 30+ nests Sussex University, 6 prs each Toads Hole Valley and North Portslade and 2 prs in residential Southwick.

Some notable autumn counts were: 5000+ Shepcote on Sep 20, 1000+ Withdean on the same day and 300 Cissbury on Aug 28. Regular counts between Aug 9 and Sep 13 produced totals of 622 at Sompting Brooks and 565 at Sompting Downs. Peak movement at Hollingbury Camp was 6600 on Sep 23. Last records were 2 Goring Gap on Oct 22 and 1 at Findon Valley on Oct 29.

1009 TREE PIPIT *Anthus trivialis*

Fairly common on passage

Spring records were 2N over Worthing on Apr 12 and 2 Brighton Marina on Apr 16. Of interest was a pair displaying at Washington Bostal on May 29. Records of singles or up to 3 birds in autumn came from Shoreham Airfield, Goring Gap and West Street, Sompting. Totals were: 82 Sompting Brooks (Aug 23 - Sep 13), 22 Sompting Downs (Aug 28 - Sep 13), 8 Hollingbury Camp (Aug 12 - Sep 13). Last for year was at Sompting on Sep 25.

1011 MEADOW PIPIT *Anthus pratensis*

Common

Early counts were 50 Shepcote on Mar 11 and 40N Worthing Beach on Apr 15. Breeding season records were: 8 prs Shepcote, 5 prs Cissbury, 3 prs Whitehawk Hill, 2 prs Bevendean Down and 1 pr each Wild Park, Fulking Down and Shoreham Sanctuary.

There was no remarkable autumn passage reported, peak movement at Hollingbury Camp being 63 on Sep 23 and a flock of 80 at Sompting on Sep 27.

1014 ROCK PIPIT *Anthus petrosus*

Regular winter resident, occasionally breeds

Early year totals in Shoreham Harbour were 12 (Jan) and 6 (Feb) and a pair was reported there on two dates in Jul. In Brighton Marina there were 4 in Jan and again in Dec and 1 pr was noted displaying in the breeding season. In the latter half of the year 1 or 2 birds were noted from Widewater from Oct 28 and the Shoreham Harbour max. was 8 for Nov & Dec. Miscellaneous records were: 1 Goring Beach on Nov 4, 10 Brooklands Beach on Dec 3, 2 Hove Lagoon on Dec 7, and 1 East Worthing Beach on Dec 20.

1015 WATER PIPIT *Anthus spinoletta*

Irregular winter visitor No records for 1995

1017 **YELLOW WAGTAIL** *Motacilla flava*

Common on passage

First for year was in flight over Beeding Cement Works on Apr 7. More general arrivals were noted after Apr 15, mainly arriving from the sea. Autumn passage from Aug 11 to the last at Benfield Valley on Oct 21 involved 593 birds of which 313 were noted at Sompting Brooks, 112 at Lancing Ring, and 48 at Sompting Downs. Notable counts included 20 at Widewater on Oct 2 and 21 on Oct 5.

1019 **GREY WAGTAIL** *Motacilla cinerea*

Noted on passage, may breed, regular in winter

Regular early year birds were noted from the Upper Adur Levels and Woodvale (1-2) and singles from central Brighton, Sussex Univ. and Woods Mill. A late summer record was 3 at Stanmer Park on Jun 17.

Autumn records were at Sompting Brooks on Aug 25/31 and Sep 12, Sompting Downs on Sep 10/12, Lancing Ring Sep 12/13, Shoreham Sanctuary on Sep 17, Preston Park on Sep 26, and over Hollingbury Camp on Oct 17. Late year regulars were at Ferring Rife (4), Central Brighton, Central Hove, Woods Mill and Upper Adur Levels. Also singles were at Shoreham Fort on Nov 8, and Stanmer Park on Nov 25.

1020 **PIED WAGTAIL** *Motacilla alba*

Common

Early counts were: 25 Mintham Court (Findon) on Jan 14, 25 West Shoreham Beach on Jan 30, and 25 Brighton Marina on Feb 4. In the breeding season 1 pr was present at Whitehawk Hill. Late counts included a regular flock of 25 at Woods Mill, 50 Goring Beach on Nov 4, and 24 Small Dole on Dec 21.

1066 **WREN** *Troglodytes troglodytes*

Common

Breeding season counts were: 108 prs Wild Park, 19 prs Bevendean Down, 18 prs Withdean Wood, 15 prs Whitehawk Hill, 11 prs Toads Hole Valley, 7 prs Eldred Ave Woods (West Dene) and 6 prs Southwick Hill. Late counts were Brighton Cemeteries 34 (Nov) and 26 (Dec), Withdean Park 20 (Nov) and 21 (Dec), and Wild Park 66 (Nov) and 30 (Dec).

1084 **DUNNOCK** *Prunella modularis*

Common

Breeding season: 75 prs Wild Park, 20 prs Bevendean Down, 17 prs Whitehawk Hill, 10 prs Toads Hole Valley, 4 prs Southwick Hill, 2 prs Withdean Wood and 1 pr Eldred Ave Woods. Late counts were: Brighton Cemeteries 8 (Nov) and 10 (Dec), Withdean Park 8 (Nov) and 10 (Dec), Wild Park 37 (Nov) and 33 (Dec).

1099 **ROBIN** *Erithacus rubecula*

Common

Breeding season counts were: 153 prs Wild Park, 38 prs Bevendean Down, 19 prs Withdean Wood, 12 prs Toads Hole Valley, 9 prs Eldred Ave Woods (West Dene), 8 prs Whitehawk Hill and 4 prs Southwick Hill. Late counts were Brighton Cemeteries 46 (Nov) and 37 (Dec), Withdean Park 41 (Nov) and 28 (Dec), Wild Park 62 (Nov) and 42 (Dec). On both Southwick Hill and Shoreham Old Railway 8 birds held winter territories.

1104 **NIGHTINGALE** *Luscinia megarhynchos*

Passage migrant, occasionally breeds

First record came from Woods Mill on Apr 14 and 2 prs were present in the breeding season with young noted in July. A single was at Waterhall and two at Beeding Hill on Apr 30. Hollingbury Camp had a singing male on Apr 22 and another on May 23. Further singles were at Golding Barn on May 2 and Stretham Manor on May 7. Breeding season counts in the vicinity of Old Erringham Farm/Cement Works varied between 3 and 6 prs. The only autumn record was at Shoreham Sanctuary on Aug 12.

1121 **BLACK REDSTART** *Phoenicurus ochruros*

Regular autumn/winter visitor, has bred

Regular Jan - Mar around Shoreham Harbour and Brighton Marina with up to 2m and 2f at the former and 2f at the latter.



Miscellaneous spring records were: 1m Sheepecote on Mar 24, 1m High Salvington on Mar 28, 1 Hollingbury Camp on Apr 1, 1f Hollingdean on Apr 5/6, and 1f Wild Park on May 2. In the breeding season, a male was singing in The Lanes (Brighton) on Jun 7 and a female was at Southwick Power Station throughout May.

Autumn movements at West Street (Sompting) started with 1 on Sep 22 - 26, then 2 next day and increasing to 4 on Oct 14 but decreasing to 3 on 26th and 2 on 29th. Other autumn records came from Sompting Brooks on Aug 31, Brighton Racecourse (3) on Oct 16, New Salts Farm on Oct 22 and Nov 5, Lancing Clump on Oct 2 and Hollingbury Camp 1 on two dates in late Oct. The first bird returned to Shoreham Harbour on Oct 30 with a total of 7 between Nov 11 - end Dec. A single was at Brighton Marina from Nov 26 to year end and also seen were one at Widewater on Dec 2 and 2 East Worthing Beach on Dec 20.

1122 **REDSTART** *Phoenicurus phoenicurus*

Fairly common passage migrant, especially in autumn

A female was reported from a Shoreham garden on Mar 24/25. After a male at New Salts Farm on Apr 12 another male was at Shoreham Airfield on Apr 25 and there were four in our area on Apr 30.

Between Aug 19 (3 at Cissbury) and the last at Brighton Cemeteries on Oct 28, a total of 105 were recorded (62 at Sompting Brooks Aug 23 - Sep 19 and 18 at Hollingbury Camp Aug 16 - Oct 4). Unfortunately one was found dead at Worthing Station on Sep 24.

1137 **WHINCHAT** *Saxicola rubetra*

Common passage migrant

First was a male at Sheepecote on Apr 10, then 1 was at Hollingbury Camp on Apr 16. On Apr 30 4 were at Shoreham Airport, 3 at Sheepecote, and singles at Hollingbury Camp and Worthing Beach. May records were: 1 Airfield on 1st, 2 New Barn Farm (Portslade) on 8th and a total of 5 at Sheepecote. Between Aug 10 and the last at Hollingbury Camp on Oct 8 a total of 568 were noted with 319 at Sompting Brooks up until Sep 13.

1139 **STONECHAT** *Saxicola torquata*

Regular in winter, occasionally breeds

Early regulars were reported from Upper & Lower Adur, Widewater, Houseboats, Hollingbury Camp and Ferring Rife. During the breeding season a pair was noted near Sheepecote. Visible autumn movement occurs within our area, accounting for over 30 records in the region. Reported late year at Cissbury Ring, Goring Gap, Ferring Rife, Southwick Hill, Whitehawk Hill, New Salts Farm, Widewater, Houseboats, Hollingbury Camp and Upper/Lower Adur.

1146 **WHEATEAR** *Oenanthe oenanthe*

Common on passage

First record was at Hollingbury Camp on Mar 11, then a more general arrival occurred after Mar 23. Larger spring gatherings included 31 at Sheepcote on Mar 24 and 11 there on May 1, and 20 Goring Gap on Apr 4. Between Aug and the last at Shoreham Harbour on Oct 30, 392 were reported in our area including 200 at Sompting Brooks between Aug 1 and Sep 13. Larger autumn gatherings in Aug included 23 Shoreham Airfield on 21st, 21 Steyning Round Hill on 22nd and 31 Widewater on 28th.

1186 **RING OUZEL** *Turdus torquatus*

Regular passage migrant

A single was at Hollingbury Golf Course on Mar 11, then 1m at Hollingbury Camp on the 18th, and 3 at Wild Park on Apr 5/6. Autumn records were 1f Cissbury on Sep 21, 1m Goring Gap on Oct 7, and 2 Hollingbury Camp on Oct 11 & 21.

1187 **BLACKBIRD** *Turdus merula*

Common

Only early count was 40 at Hove Park on Jan 2. Breeding records were: 128 prs Wild Park, 48 prs Bevendean Down, 37 prs Whitehawk Hill, 23 prs Sheepcote, 20 prs Toad Hole Valley, and 14 prs Withdean Wood. Late year counts were Brighton Cemeteries 47 (Nov) and 75 (Dec), Withdean Park 46 (Nov) and 66 (Dec) Wild Park 63 (Nov) and 83 (Dec).

1198 **FIELDFARE** *Turdus pilaris*

Common and widespread in winter

Some early counts were 98 Blackpatch Hill on Jan 14, 60 Golding Barn on Feb 7, 40 Muntham Court (Findon) on Jan 14 and 30 Woods Mill on Mar 31. There were singles or flocks up to five from various locations with April records from Sandgate Park on 9th and Sheepcote on 30th. First autumn record was at Hollingbury Camp on Oct 18, then few records for Nov and early Dec then larger flocks included 200 Beeding Hill, 150 Upper Adur, 100 Woods Mill and 40 Hollingbury Camp.

1200 **SONG THRUSH** *Turdus philomelos*

Common

Only early count was 15 Hove Park on Jan 2. Breeding records were :15 prs Wild Park, 4 prs Southwick Hill and 2prs each at Withdean Wood, Toads Hole Valley, Whitehawk Hill, Eldred Ave Woods. The only significant late records were 74 Hollingbury Camp on Oct 21 and a resident flock late Dec of 25/30.

1201 **REDWING** *Turdus iliacus*

Common and widespread in winter

Small numbers resident in Hollingbury Woods from Feb 25 to Apr 2. Significant early flocks were 30 Upper Adur in Jan and 200 there on Feb 27, and 28 NE Hollingbury on Mar 2. After a single at Lancing Ring on Sep 12, autumn movements were not generally noted until mid Oct culminating in a passage at Hollinbury Camp of 620 birds on 21st. Fairly widespread in Nov and Dec with the largest gatherings in Dec, 400 Upper Adur on 28th and 105 Hollingbury Camp on 13th.

1202 **MISTLE THRUSH** *Turdus viscivorus*

Common

Early and breeding season records were not sufficient to present a relevant overall picture of the birds in our area. Unusual were 3 Shoreham Sanctuary on Jul 23 - rarely noted at this site in recent years. Late counts were: Brighton Cemeteries 8 (Nov) 24 (Dec), Withdean Wood 10 (Nov) 12 (Dec) and Wild Park 2 (Nov) 1 (Dec).

1236 **GRASSHOPPER WARBLER** *Locustella naevia*

Generally scarce passage migrant

Spring records were singles in Apr at Whitthawk Hill on 22nd, Sheepcote on 24th, Hollingbury allotments on 25th, and in May at Devils Dyke on 8th. One was ringed at Cissbury on Aug 20 and the only other autumn sighting was at Woods Mill on Sep 14.

1243 **SEDGE WARBLER** *Acrocephalus schoenobaenus*

Common breeding summer visitor

First for the year was at Shoreham Sanctuary on Apr 16, incidentally the first ever record here. Thereafter noted sporadically after Apr 21 with unusual singing records coming from Portslade Rly Stn on May 1 and Devils Dyke on May 8. Very under reported in the breeding season - only record being 1 pr Shoreham Sanctuary. Singles during Aug were noted from Sompting Brooks and Woods Mill, then singles during Sep at Woods Mill on 4th & 6th and Sompting on 30th.

1251 **REED WARBLER** *Acrocephalus scirpaceus*

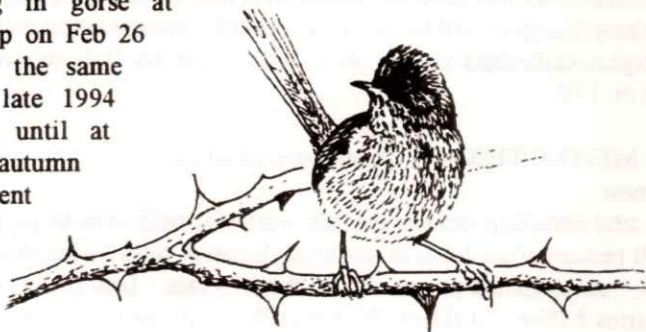
Common breeding summer visitor

Only spring records were singles at Woods Mill on Apr 19 and Lancing Clump on May 21. Breeding season records received were: 4 prs Shoreham Sanctuary, 3/4 prs Woods Mill and 2 prs New Salts Farm. Unusually, one was singing at Preston Park Station on Jun 16.

Autumn records were: 4 Lancing Ring Aug to Sep 12, 1 Sompting Brooks on Sep 4 and a single at Woods Mill on Sep 14.

1262 DARTFORD WARBLER *Sylvia undata*
Autumn migrant, increasingly recorded in winter

A male singing in gorse at Hollingbury Camp on Feb 26 was undoubtedly the same bird present in late 1994 which remained until at least Mar 16. In autumn one pair was present at Wild Park from Oct 14 then up to four there Oct 21 - Dec 20.



One was in very scant cover at Southwick Power Station on Oct 19.

1274 LESSER WHITETHROAT *Sylvia curruca*
Common breeding summer visitor

First record was at Golding Barn on Apr 14. In the breeding season, records were: 4 prs Wild Park, 2 prs Southwick Hill and single prs at Bevendean Down, Lower Adur Valley and Worthing. Obviously under-recorded! Significant autumn counts were 177 Lancing Ring (Aug 2 - Sep 13), 40 Sompting Downs (Aug 19 - Sep 13), 38 Sompting Brooks (Aug 10 - Sep 12), and a total of 40 between Newtimber Hill and Waterhall on Aug 26. Last records were in a Southwick garden on Sep 22 and at Hollingbury Camp on Sep 23.

1275 WHITETHROAT *Sylvia communis*
Common breeding summer visitor

First for year were 2 at Hollingbury Camp on Apr 9. Breeding season records were: 18 prs each Wild Park and Whitehawk Hill, 13 prs Devil's Dyke, 12 prs Bevendean Down, 11 prs Southwick Hill, 10 prs Highdown Hill, 6 prs Toads Hole Valley and 5 prs Woods Mill.

Autumn totals from specific locations were: 315 Hollingbury Camp (Jul 25 - Sep 20), 466 Lancing Ring (Aug 2 - Sep 13), 201 Sompting Brooks (Aug 1 - Sep 13), 171 Sompting Downs (Jul 30 - Sep 13). In addition, 40 were counted between Waterhall and Saddlescombe on Aug 28. Last was at Hollingbury Camp on Sep 20.

1276 **GARDEN WARBLER** *Sylvia borin*

Fairly common breeding summer visitor

Spring singles were at Woodvale on Apr 20, a Worthing garden on Apr 29, St Anne's Well Gardens on May 1 and Southwick Hill on May 19. Seven were at Hollingbury Camp on Apr 25. Breeding pairs were recorded from: Wild Park, Devil's Dyke, Southwick Hill, Golding Barn, Patching Woods and Woods Mill. Hollingbury Camp had a poor autumn with a max of 3 on Aug 19, but Lancing Ring had 30 between Aug 2 and Sep 13 with a peak of 6 on Aug 20. Last was at Woods Mill on Sep 9.

1277 **BLACKCAP** *Sylvia atricapilla*

Common breeding summer visitor, regular in winter

Winter records (Jan - Mar) involved 11 birds from gardens in West Dene, Upper Beeding, Portslade, Broadwater, Hollingbury and at Woodvale which recorded 2m and 1f on Jan 28. Probable migrants were noted from late March but overlap is probable. Breeding season counts were: 18 prs Wild Park, 4 prs Woods Mill, 2 prs each Southwick Hill and Withdean Wood and 1 pr each Toads Hole Valley, Bevendean Down, Golding Barn and Patching Woods.

Autumn totals were: 154 Hollingbury Camp (Jul 14 - Oct 18), 266 Lancing Ring (Aug 2 - Sep 13), 30 Sompting Downs (Aug 21 - Sep 13) and 29 Sompting Brooks (Aug 10 - Sep 13). Possible last record was at Goring Gap on Oct 7. A plethora of late year records involved 11 birds from 8 locations.

1298 **PALLAS'S WARBLER** *Phylloscopus proregulus*

Rare autumn vagrant No records for 1995

1308 **WOOD WARBLER** *Phylloscopus sibilatrix*

Fairly scarce passage migrant

A good spring at Hollingbury Camp with 5 on Apr 29 and singles on May 6 and 13. A male was singing at Woodvale on May 16. One was ringed at Cissbury on Jul 28. Other autumn records were: 1 near the Sussex Pad on Jul 30, 2 Woodvale Cemetery on Aug 14 and 1 on Aug 30, 1 Waterhall on Aug 26, and 1 Hollingbury on Sep 11.

1311 **CHIFFCHAFF** *Phylloscopus collybita*

Common breeding summer visitor, with small wintering population

Early records were 2 at Woodvale through Jan and Feb and 1 in a Lancing garden on Jan 10 and Feb 9. An early fall between March 10 - 14 produced records from across the area (the first at Hollingbury Camp), thereafter the spring passage was average. Singing males were reported from many parts of the area with 10 prs at Wild Park.

Autumn passage was fairly good with totals of 308 at Lancing Ring from Aug 2 - Sep 13 and 69 at Sompting Downs between the same dates. Some notable falls included 96 Lancing Ring on Sep 13, 35 Hollingbury Camp on Sep 23 with 34 there on Sep 12 and 30 on Sep 15, and 25 Woods Mill on Aug 27. A total of 21 were trapped at Shoreham Sanctuary on Sep 23. The last probable migrant was at Goring Gap on Oct 22 with further sightings there on Nov 4 and 26. Late Nov and Dec records indicate about 6 over-wintering birds present in our area.

1312 **WILLOW WARBLER** *Phylloscopus trochilus*

Common breeding summer visitor

First spring bird was at Shepcote on Mar 31, then a more general arrival occurred after Apr 2 with significant falls at Hollingbury Camp on Apr 11, at Goring Wood on Apr 14 and at Waterhall on Apr 16. An undisclosed number of pairs bred at Golding Barn and Patching Woods and specific counts were: 15 prs Wild Park, 12 prs Devil's Dyke, 7 prs Southwick Hill, 5 prs Bevendean Down and 2 prs Woods Mill.

Autumn totals were: 444 Lancing Ring (Aug 2 and Sep 13), 120 Sompting Downs (Jul 30 - Sep 13) and 53 Sompting Brooks (Aug 2 - Sep 10). Peak falls were: 66 Lancing Ring on Aug 22, 20 Hollingbury Camp on Sep 9, and 25 Sompting on Aug 23. Last record was at Hollingbury Camp on Sep 23.

1314 **GOLDCREST** *Regulus regulus*

Common resident breeder, passage migrant and winter visitor

Regular early year birds occurred in Broadwater and Worthing gardens and at Southwick Hill. Miscellaneous records were 1 in a Storrington garden on Jan 7 with 2 there on Feb 12, 2 at Stanmer on Jan 22 and 2 in a Withdean garden on Feb 2. Peak spring count at Hollingbury Camp was 5 on Mar 21. Breeding season records of pairs or singing males came from Withdean Wood, Eldred Ave Woods (West Dene), Preston Park Hotel and in or around a Worthing garden a juv was noted on Jun 22.

A good visible autumn passage from right across our area produced peaks of 60+ Cissbury on Sep 21, 30 Goring Gap on Nov 4, 20 Shoreham Sanctuary on Oct 21 and at Hollingbury Camp - Oct max 35 on 15th and 18 on Nov 22. Late year regulars were 5-8 at Goring Gap Nov/Dec and singles in a Broadwater and a Worthing garden, Wild Park and Brighton Cemeteries. Other records were: 6 Broadwater on Dec 25, 12 Sullington Warren on Dec 26 and a single in a Storrington garden on Dec 28.

1315 **FIRECREST** *Regulus ignicapillus*

Regular passage migrant in small number, occasionally winters

A single throughout Jan at Woodvale was joined by a second bird on Jan 22 with

both remaining through Feb when one was heard singing. Other records were: 1 in the Hollingbury Golf Course area on Jan 6/7 and in Mar: singles at Woods Mill on 17th, New Salts Farm on 18th, Hangleton on 19th, Wild Park on 20th and one was at Hollingbury Camp on Apr 1. Interesting spring/summer records were 2m singing at Hollingbury Camp on May 8 and one in a Storrington garden in Jun.

Late year records came from: Beach Green (Shoreham) on Oct 14, Goring Gap on Oct 20 and Nov 4/5, New Salts Farm on Nov 3. Cissbury had a max. 3 on Nov 4; there was 1 at Woodvale Cemetery on Oct 9 and subsequently 1/2 wintering into 1996.

1335 SPOTTED FLYCATCHER *Muscicapa striata*

Fairly common summer migrant

First spring bird was at Hollingbury Camp on May 6, thereafter 9 were noted in May from 7 locations, including 3 at Sheepcote on May 21. Possible breeding at Highdown Gardens and Chantry Mere (Storrington). Autumn passage between Jul 25 - Sep 29 (Lancing Clump) involved 250 birds from 11 localities including totals of 169 Lancing Ring, 28 Sompting Downs and 28 Hollingbury Camp.

1349 PIED FLYCATCHER *Ficedula hypoleuca*

Regular passage migrant

A male in Goring Wood on Apr 4 is the earliest for our area and probably also for Sussex despite a generally early fall in Apr. Lancing Ring total from Aug 20 - Sep 12 was 20 with a peak of 7 on Aug 20. Other records were: 2 Hollingbury Camp on Aug 2 with singles there on 19/20th and 6 on Aug 21, 1 New Salts Farm Aug 24, 1 Sompting Downs on Aug 23 with 2 on 30th, 3 Woodvale on Aug 21 and 2 Findon Valley on Aug 27. Sep records were singles at Sompting Brooks on 1st and 9th and in a Worthing garden on Sep 10.

1437 LONG-TAILED TIT *Aegithalos caudatus*

Common

Early year flocks were 7 Goring Wood on Jan 14, 6 in a Worthing garden on Jan 16 and 7 in a Hangleton garden on Jan 29 with 4 there on Feb 4. Two were on peanuts in a Storrington garden on Jan 7. Breeding season records were: 13 prs Wild Park, 2 prs Toads Hole Valley and Bevendean Down and 1 pr each Withdean Wood, Eldred Ave Woods (West Dene) and Woods Mill. Post breeding flocks were 19 at Broadwater on Aug 4 and 17 at Sussex Pad on Jul 30. Late year flocks were 20 Goring Gap on Oct 13 and in Nov: 37 Wild Park, 28 Goring Gap, 8 Brighton Cemeteries and 8 in a Worthing garden. Max counts in Dec were: 21 at Wild Park, 20 Goring Gap, 16 Cissbury, 8 Withdean Park and 6 Brighton Cemeteries.

1440 **MARSH TIT** *Parus palustris*

Fairly uncommon

In spring, singles were at Devil's Dyke on Apr 1 and Woods Mill on Apr 7. A single was noted irregularly at Woods Mill from Aug 1 - Sep 1 and another was at Patching Woods on Sep 1.

1442 **WILLOW TIT** *Parus montanus*

Fairly uncommon

One noted Woods Mill on 4 dates Jul 7 - 28, 1 Wild Park from Aug 23 - Sep 20.

1461 **COAL TIT** *Parus ater*

Fairly common

Present in a Broadwater garden Jan - Mar and July - Dec. Two noted at Stanmer on Jan 22 and Feb 11 and at Hollingbury Camp on Feb 3, singles in Mar/Apr at Warren Hill, Patching Woods and Withdean. Also noted Hollingbury Camp, Withdean and Stanmer on various dates in Nov/Dec.

1462 **BLUE TIT** *Parus caeruleus*

Abundant

Breeding records were: 59 prs Wild Park, 11 prs Bevendean Down, 7 prs Whitehawk Hill and Withdean Wood, 5 prs Toads Hole Valley and 2 prs Eldred Ave Woods (West Dene). Late year counts were: Brighton Cemeteries 31 (Nov) 38 (Dec), Withdean Park 14 (Nov) 22 (Dec), and Wild Park 52 (Nov) 43 (Dec).

1464 **GREAT TIT** *Parus major*

Common

Breeding records were: 42 prs Wild Park, 9 prs Bevendean Down, 3 prs Withdean Wood and Toads Hole Valley, 2 prs Whitehawk Hill and 1pr Eldred Ave Woods (West Dene). Late year counts were: Brighton Cemeteries 13 (Nov) 16 (Dec), Withdean Park 6 (Nov) 15 (Dec), and Wild Park 31 (Nov) 22 (Dec).

1479 **NUTHATCH** *Sitta europaea*

Small breeding population

A single was noted on the Upper Adur Levels on Jan 1. At Woods Mill 2 prs bred and it is regular on feeders in a Storrington garden. Two present Highdown Hill Jul 15 - 22 which is unusual this close to the coast. Two were at Spithandle Lane on Sep 25 and 3 at Lee Farm on Dec 18.

1486 **TREECREEPER** *Certhia familiaris*

Small breeding population

A pair was present in the breeding season at Woods Mill. Wiston Pond had 1 pr

which raised 3 young and 1 pair may have bred at Shoreham Sanctuary, where adults were seen in late Jun/Jul and a juv trapped on Jul 16. Early year records were singles in a Storrington garden on Feb 25, Warren Hill on Feb 28, Patching Woods on Mar 13 and Devil's Dyke on Apr 1. Late year, singles at Golding Barn on Oct 31 and Smugglers Lane on Dec 25 and 2 at Spithandle Lane on Sep 25, Preston Park in Nov, Lee Farm on Dec 18, and Goring Wood all Dec.

1508 **GOLDEN ORIOLE** *Oriolus oriolus*

Very rare vagrant

One singing briefly at Withdean Park early on Jul 2 (C Brooks per AJW).

1515 **RED-BACKED SHRIKE** *Lanius collurio*

Rare vagrant, formerly bred.

An adult male was present at Sompting on Sep 3 (DL, BFF, DIS).

1539 **JAY** *Garrulus glandarius*

Common

Breeding season records from Wild Park (2 prs) and Woods Mill. In autumn 3 at Sompting Downs on Aug 23 and 7 on Aug 30. Late year counts were: Brighton Cemeteries 4 (Nov) 4 (Dec), Withdean Park 2 (Nov) 1 (Dec), and Wild Park 12 (Nov) 5 (Dec).

1549 **MAGPIE** *Pica pica*

Very common and widespread

A partial albino was resident around New Salts Farm from Jan - Mar and Aug onwards. The only early year count was 12 in a Hangleton garden on Jan 26. Breeding season records were: 3 prs each Whitehawk Hill and Withdean Wood and 2 prs Toads Hole Valley. Urban magpies can be a nuisance, in a Hangleton garden a pair caused a drastic reduction in the regular garden bird population. Late year counts were: Brighton Cemeteries 25 (Nov) 18 (Dec), Withdean Park 3 (Nov) 7 (Dec), Wild Park 62 (Nov) 64 (Dec), and 16 Southwick Hill on Oct 13.

1560 **JACKDAW** *Corvus monedula*

Common

Breeding season records came from Church Road (Hove) and around Brighton Town Hall. A flock of 65 was recorded on an arable field adjacent to Wild Park on Jul 29 and the late year max there were 16 in Nov and 4 in Dec.

1563 **ROOK** *Corvus frugilegus*

Common

Nest counts during the breeding season were: 123 Patcham Place, 68

Saddlescombe, 17 North Stanmer and 11 Varndean. Flock counts adjacent to Wild Park were 50 on Jul 29 and 120 on Aug 5.

1567 CARRION CROW *Corvus corone*

Common

Specific breeding season counts were: 14 prs Wild Park, 2 prs each Whitehawk Hill and Bevedean Down and 1pr each at Withdean Wood, Eldred Ave Woods and Toads Hole Valley. In addition 12 occupied nests along the A27 Shoreham to Brighton. Early year counts were 110 Hollingbury Golf Course on May 24 and a flock of 21 Benfield Valley on Apr 22. Late year maximums were: Wild Park 28 (Nov) 24 (Dec) and Brighton Cemeteries 12 (Nov) 7 (Dec). A flock of 92 was adjacent to Wild Park on Oct 21.

1582 STARLING *Sturnus vulgaris*

Abundant

Breeding season counts were: 43 prs Wild Park and 15 prs Bevedean Down. The only post breeding flock recorded was 150+ Sheepcote on May 21. Late year max were: Brighton Cemeteries 25 (Nov) 35 (Dec), Withdean Park 100 (Nov) 35 (Dec) and Wild Park 150 (Nov) 100 (Dec). A brave attempt to count the Power Station roost on Dec 23 yielded 1740 birds. Anyone for the gigantic swarms wheeling over Brighton and the West Pier in winter?

1584 ROSE -COLOURED STARLING *Sturnus roseus*

Rare vagrant

A single at Coldean Estate (Brighton) Jun 12/14 was elusive but well seen and photographed. Details sent to SOS and BBRC (ADW, IJW)

1591 HOUSE SPARROW *Passer domesticus*

Common

1598 TREE SPARROW *Passer montanus*

Scarce, probably no longer breeding

The regular Upper Adur flock reached 24 in Jan, thereafter max counts were 8 (Feb) and 6 on Mar 17. Other early year birds were 6 Shoreham Fort on Feb 12 and 4 Standean on Mar 18. Sept records were 3 Lancing Ring on 9th and 1 Sompting Brooks on 13th. Late in the year 1 pr was seen at Small Dole and a flock of 3 at Smugglers Lane (Upper Beeding) increasing up to 10 during Nov.

1636 CHAFFINCH *Fringilla coelebs*

Common

The only early flock reported was 40 at Muntham Court (Findon) on Jan 14.

Breeding season records were: 42 prs Wild Park, 18 prs Bevendean Down, 6 prs Toads Hole Valley, 3 prs Withdean Wood, 2 prs Whitehawk Hill and 1 pr Eldred Ave Woods (West Dene). Juvs were noted on Southwick Hill. Late year max were: Brighton Cemeteries 13 (Nov) 14 (Dec), Withdean Park 17(Nov) 14 (Dec) and Wild Park 13(Nov) 21 (Dec). A flock of 31 was at Lychpole Hill on Nov 26.

1638 **BRAMBLING** *Fringilla montifringilla*

Regular passage migrant

The only early record was 2 at Standean on Mar 18. AutUmn records at Hollingbury Camp in Oct were 2 on 18th and 25th, 9 on 21st and 1 on Nov 4. Cissbury recorded 1 on Oct 22.

1649 **GREENFINCH** *Carduelis chloris*

Common

Breeding records were: 32 prs Wild Park, 10 prs Bevendean Down, 5 prs Whitehawk Hill, 2 prs Toads Hole Valley and 1 pr Eldred Ave Woods (West Dene), Withdean Wood and Woods Mill. A flock of 46 was recorded at Shoreham Fort on Nov 26. Late year max were: Brighton Cemeteries 23 (Nov) 34 (Dec), Withdean Park 52 (Nov) 41 (Dec) and Wild Park 12 (Nov) 15 (Dec).

1653 **GOLDFINCH** *Carduelis carduelis*

Common

Early year flocks were 14 at Widewater on Jan 31 and 15 Shoreham Beach on Feb 5. Spring peak was 60E past Worthing Beach on May 2. There was a post-breeding flock of 30+ at Woods Mill and some sizeable autumn flocks included: 150 Upper Beeding on Oct 4, 100 Highdown Hill on Oct 8, 80 Shoreham Sanctuary on Sep 30, 80 Goring Gap on Oct 28, 75 Hollingbury Camp on Aug 20 and 60+ Ferring Beach on Oct 10. There were many other flocks between 25 - 50. The only significant Dec flocks were 30 Southwick Hill on 22nd, 15 Golding Barn on 3rd and a max of 14 at Wild Park.

1654 **SISKIN** *Carduelis spinus*

Passage migrant and winter visitor

Early year records were: 2W Hollingbury Camp and a female in a Storrington garden both on Jan 6, 15 Storrington Mill Pond on Jan 8, 3N Hollingbury Camp on Mar 24, and 1 Woods Mill on Mar 28. Autumn total at Hollingbury Camp (Sep 20 - Dec 20) was 82 with a peak count of 12 on Oct 21. Other late year records were: 4 Lancing Ring on Sep 12, 2NE Broadwater on Oct 21, 8 Beeding Brooks on Nov 18, and 1W Broadwater on Nov 26.

1660 **LINNET** *Carduelis cannabina*

Common on downland, passage migrant

A flock of 20 was on Shoreham Beach in Jan and Feb, 30 were at Hollingbury Camp on Apr 16 and 25 at Southwick Hill on Apr 23. Breeding season records were: 17 prs Whitehawk Hill, 10 prs Toads Hole Valley, 9 prs Bevendean Down, and 8 prs Wild Park.

Autumn flocks noted were: 150 Goring Gap on Oct 10 with 80 on 22nd, 100 Sheepcote on Oct 7, 50 Brooklands on Aug 30 and 30 Cissbury on Oct 10. Max at Wild Park during Nov was 24.

1662 **TWITE** *Carduelis flavirostris*

Rare winter visitor

A single on Southwick Beach with Linnets and Greenfinch on Nov 18 (SRA).

1663 **REDPOLL** *Carduelis flammea*

Passage migrant, occasional winter visitor

The only early year records were 1E Broadwater on Mar 11 and a late individual W at Worthing Beach on May 23. A small autumn movement occurred at Hollingbury Camp with a max of 7 noted on Oct 24.

1710 **BULLFINCH** *Pyrrula pyrrula*

Fairly common

Early year records were from Devil's Dyke, Stretham Manor, Uppr Beeding and Warren Hill - all singles or pairs. Breeding season records were: 3 prs Wild Park, 2/3 prs Woods Mill, 2 prs Southwick Hill and Devil's Dyke and 1 pr Bevendean Down. Late year records from locations not previously mentioned were 2 Golding Barn on Oct 31 and 1 on Dec 22, and 3 Goring Gap on Dec 25.

1717 **HAWFINCH** *Coccothraustes coccothraustes*

Rare visitor

One calling Hollingbury Golf Course on Apr 12 and 1 calling Woodvale on May 29 (both ADW)

1850 **SNOW BUNTING** *Plectrophenax nivalis*

Fairly regular winter visitor in small numbers

2 Brighton Marina Dec 23/24 and thereafter a 1st winter female to year end.

1857 **YELLOWHAMMER** *Emberiza citrinella*

Common in suitable habitat

Early year flocks were: 26 Hollingbury Camp on Jan 7, 20+ Stretham on Jan 8, 15 Smugglers Lane (Upper Beeding) on Jan 10, 20 Muntham Court (Findon) on

Jan 14, 25 Sheepcote on Feb 4, and 15 Southwick Hill on Mar 12. Breeding season records were: 12 prs Wild Park, 4 prs each Whitehawk Hill and Toads Hole Valley and 3 prs Bevendean Down.

1877 REED BUNTING *Emberiza schoeniclus*

Common

Early and late in the year present at Smugglers Lane (Upper Beeding) and up to 4 along the Lower Adur (between the bridges). Breeding season records were: 2 prs Adur mudflats and single prs at New Salts Farm and Woods Mill. Autumn passage at Hollingbury Camp produced 5 birds between Oct 14 and Nov 7 and unusually a single flew W over Goring gap on Oct 16.

1882 CORN BUNTING *Miliaria calandra*

Common on downland

Some early year flocks were: 21 Southwick Hill on Jan 28, 50 Mill Hill on Feb 3, 25 Standean and 16 Lancing Ring on Mar 18, and 60 Sheepcote on Apr 22.

Breeding season counts were: 13 prs Foredown Hill, 12 prs Mill Hill, 3 prs Southwick Hill, 2 prs each at Bevendean Down, Shoreham Sanctuary area, Findon Valley, and 1 pr New Salts Farm. Also noted were 7 prs from five 1 km squares between Wolstenbury and Ditchling Beacon. The only late year counts were 10 Hollingbury Camp on Oct 27, 20N Shoreham Airfield on Oct 29, and a bird singing at Southwick Hill on Dec 22.

UPDATE OF RARITY RECORDS

Recent British Birds Rarities Committee (BBRC) decisions and confirmation of acceptance by Sussex Ornithological Society are listed below:

1961

0581 **BONAPARTE'S GULL** June 20, Portobello (Brighton). No longer accepted by BBRC. Although outside the recording area, the species was included in the SDOS systematic list and is now deleted.

1973

0303 **LESSER KESTREL** Nov 4, No Man's Land. Recently rejected by BBRC as inadequately documented and thus deleted from SDOS list.

1993

0046 **MANX SHEARWATER** Sep 13, 2W Worthing - accepted (RJS).

1993 (continued)

0130 **BLACK STORK** 1E Shoreham at 15.05 on Sep 16 (R H Eyre-Walker), also seen over Sidlesham Ferry and Icklesham - accepted (BBRC).

0231 **HONEY BUZZARD** 2 ad + juv on Sep 24 at Lancing Clump - accepted (PMB).

0301 **OSPREY** Worthing Beach on Apr 30 (RAI) and on May 6 (PMB), and Broadwater on Sep 17 (RAI) - all accepted.

1508 **GOLDEN ORIOLE** May 10, Hollingbury Camp - accepted (MJH)

1640 **SERIN** Apr 25, Brighton Marina - accepted (ADW, PJW)

1994

0238 **BLACK KITE** May 13, Lancing - rejected by BBRC.

0267 **GOSHAWK** Apr 22, Stanmer Down - accepted (JA)

0421 **CORNCRAKE** Sep 17, Sheepcote Valley - accepted (ADW)

0433 **CRANE** Nov 7-9, Adur Levels - accepted for Nov 6-8. (SRA, BFF et al.)

0598 **ICELAND GULL** Jan 13, Shoreham Harbour - accepted (BFF)

0995 **RED-RUMPED SWALLOW** May 28, Cuckoo's Corner - rejected BBRC

1301 **RADDE'S WARBLER** Oct 26/27, Worthing - accepted by BBRC (RJF, DIS, KW)

1515 **RED-BACKED SHRIKE** Sep 25 to Oct 2, Sompting (PMB et al) and Oct 24, East Brighton Park (CEH) - both accepted.

1640 **SERIN** Mar 19, Goring Gap; an immature male joined by adult male and a female on Mar 20 remaining to 26th - all accepted. (DIS et al).

1866 **ORTOLAN BUNTING** Sep 14, Hollingbury G.C. - accepted (IJW).

(Research for the above up-date by I.J. Whitcomb)

ARRIVAL AND DEPARTURE OF MIGRANTS IN 1995

SPECIES	ARRIVAL	DEPARTURE
Hobby	May 3 Portslade	Oct 8 Highdown Hill
Whimbrel	Mar 10 Shoreham	Aug 16 Goring
Common S'piper	Apr 30 Upper Beeding	Oct 7 New Salts Farm
Sandwich Tern	Mar 22 Worthing/Marina	Nov 8 Shoreham Fort
'Commic' Tern	Apr 23 Worthing/Marina	Oct 7 Shoreham Fort
Little Tern	Apr 22 Worthing	
Black Tern	Apr 29 Worthing	Oct 4 Shoreham Hbr
Turtle Dove	Apr 28 Airfield	Sep 19 Sompting
Cuckoo	Apr 19 Hollingbury	
Swift	Apr 20 Hollingdean	Sep 21 Cissbury
Sand Martin	Mar 24 Widewater	Sep 14 Hollingbury
Swallow	Apr 2 Lychpole	Oct 31 Hollingbury
House Martin	Apr 12 Airfield	Oct 29 Findon
Tree Pipit	Apr 12 Worthing	Sep 25 Sompting
Yellow Wagtail	Apr 7 Upper Beeding	Oct 21 Benfield Valley
Redstart	Mar 24 Shoreham	Oct 28 Brighton Cems
Whinchat	Apr 10 Sheepcote	Oct 8 Hollingbury
Wheatear	Mar 11 Hollingbury	Oct 30 Shoreham
Ring Ouzel	Mar 11 Hollingbury	Oct 21 Hollingbury
Grasshopper Warbler	Apr 22 Whitehawk	Sep 14 Woods Mill
Sedge Warbler	Apr 16 Sanctuary	Sep 30 Sompting
Reed Warbler	Apr 19 Woods Mill	Sep 14 Woods Mill
Lesser Whitethroat	Apr 14 Golding Barn	Sep 23 Hollingbury
Whitethroat	Apr 9 Hollingbury	Sep 20 Hollingbury
Garden Warbler	Apr 20 Wodvale	Sep 9 Woods Mill
Willow Warbler	Mar 31 Sheepcote	Sep 23 Hollingbury
Spotted Flycatcher	May 6 Hollingbury	Sep 29 Lancing
Pied Flycatcher	Apr 4 Goring	Sep 10 Worthing

This feature has been compiled from records submitted by local observers

RINGING REPORT FOR 1995

During 1995 there was a further 26% reduction in the number of birds ringed in the area. The total of 2666 was the second lowest achieved during the past 19 years with only the total of 1760 in 1991 being lower. As usual most of these were ringed as fledged birds trapped in mist nets but 184 (7%) were ringed as pulli. The largest contribution was made by the Steyning Ringing Group; Brian & Phil Clay, Val Bentley and Bill Woodford were most active at Cissbury where the total of 1393 included a totals of 314 Blackcaps and 210 Chiffchaffs and no less than 7 Firecrests.

At the Mumbles, the other active site of the Steyning RG, the total was 557 with highlights of 3 Kingfishers, 3 Green Woodpeckers and 2 Great Spotted Woodpeckers. At the Sanctuary, John Newnham and Judith Baker ringed 428 birds and the

grand total was made by 288 birds (175 pulli) ringed by Dr Barrie Watson assisted by John and Charlie Holt. Once again there were no cannon netting sessions to catch gulls.

The **table (A)** below shows the numbers of the 44 species ringed. No less than 34 species show decreases on 1994 ringing with notable reductions in the number of Blackbirds (-130), Willow Warblers (-149) and Blue Tits (-150) whilst the only substantial gain was 99 more Chiffchaffs. It is worrying to see that numbers of finches and buntings caught remain low and it is not surprising that species such as Goldfinch, Linnet, Bullfinch, Tree Sparrow, Reed and Corn Bunting are candidates for inclusion on an Agricultural Red Data List.

Table A - List of Species Ringed

Sparrowhawk	2	Song Thrush.....	87	Marsh Tit	7
Wood pigeon.....	2	Grasshopper Warbler.....	1	Blue Tit	321
Collared Dove.....	2	Sedge Warbler	9	Great Tit	118
Cuckoo.....	1	Reed Warbler	104	Treecreeper	5
Kingfisher.....	4	Lesser Whitethroat	46	Magpie.....	1
Green Woodpecker.....	5	Whitethroat.....	126	Starling	25
Gt-spotted W'pecker.....	2	Garden Warbler.....	26	House Sparrow.....	8
Swallow	7	Blackcap.....	366	Chaffinch	73
House Martin.....	171	Wood Warbler	1	Greenfinch.....	46
Wren.....	104	Chiffchaff.....	288	Goldfinch	39
Dunnoek.....	109	Willow Warbler	144	Redpoll	1
Robin.....	133	Goldcrest	69	Bullfinch.....	43
Nightingale	5	Firecrest	7	Yellowhammer	4
Redstart	5	Spotted Flycatcher.....	8	Reed Bunting.....	7
Blackbird	89	Long-tailed Tit.....	45	TOTAL	2666

Recoveries and Controls

The following is a selection of the more interesting recoveries and controls reported during the year, and, as usual several are movements recorded in previous years which have only recently been reported. Although there has been very little gull ringing in the past few years this group still provides the largest collection of recoveries.

1) Black headed Gull:- Since the last ringing report there have been 63 recoveries of this species with 50 (80%) from Europe and only 13 from the United Kingdom. As usual most of the British recoveries were from south-east England with recoveries from Sussex (7), Greater London (2) and singles from Kent, Hampshire and Dorset. More unusual was a single recovery from County Durham. The recoveries from Europe followed the pattern described in the *Sussex Bird Report* (1985:59-65) with recoveries from the Netherlands (7), Denmark (12), Germany (6), Poland (2), Lithuania (2), Estonia (3), Finland (12), Sweden (4) and Norway (2).

2) Common Gull:- There were just four recoveries, from Sussex, from Sweden in July and Germany in September. Of most interest was the history of an adult first ringed at Sompting refuse tip in January 1981 and subsequently recorded at Thyboron Haven, Jylland, Denmark in June 1992, April 1993, and May in both 1994 and 1995.

3) Herring Gull:- There were three recoveries all from Sussex which support the observation that this is the county's least migratory *Larus* species.

4) Green Woodpecker:- A juvenile ringed at Shoreham sanctuary in early August 1994 was reported as being a road casualty in Climping, 21 km west, during January 1995.

5) Garden Warbler:- A first year ringed at Wiston during August 1993 was controlled at Finningley Airport, near Doncaster, S. Yorkshire in June 1995.

6) Blackcap:- After a list of recoveries in 1994 there were only two in 1995, although for the fourth consecutive year a foreign movement has been reported:

Wiston (Sep 92) → Sutton, Greater London (May 95)

Mumbles Steyning (Sep 92) → Darnac, Haute-Vienne, France (Jul 94)

The recovery from France, 523km SSE, was remarkably far south in early July.

7) Chiffchaff:- Yet another African recovery was reported in 1995. A first year ringed at Cissbury in September 1993 was found dead on 28th December 1994 at Oulad Teima, Taroudannt, Morocco.

8) Willow Warbler:- The only movement reported was a juvenile ringed at Cissbury during August 1994 and controlled as an adult female at Kempton Park, Surrey in early July 1995

9) Goldcrest:- A first year female ringed at Cissbury on 6th November 1994 was found dead at Hardelot, Pas-de-Calais, France on 19th December 1994.

10) Blue Tit:- A first year ringed at the Mumbles in early January had moved 18km northward to Cowfold by early February 1995.

11) Starling:- The remains of a male ringed at a roost in Shoreham sanctuary during October 1976 were found in a Goring garden during September 1995. Although nearly 19 years after ringing the exact date of the Starling's demise is unknown.

As usual there were a large number of re-traps and local controls all of which help build a greater understanding of the natural histories of many common species.

SANCTUARY REPORT 1995

My notebook records 33 visits to the Society's sanctuary however, the actual number of days the copse was watched was greater as I am aware of, but have no details, of visits by other members. Sixteen of these visits were sessions when mist-nets were set for ringing. In keeping with the pattern of activity for the past decade the ringing sessions were confined to the summer and early autumn; these 16 mornings of ringing falling between May 21st and October 8th.

Like the early part of 1994, during January and February the copse was flooded and water poured from the Southern Water Authority's pumping station and reservoir into the dykes. Flood water extended onto the lawn and thigh-length waders were needed to gain access to the copse. With such conditions, coupled with the driving rain and gale force winds, it was not surprising that I was the only person at the sanctuary for the planned work party on January 29th.

The first interesting, but alarming record, for the year was the presence of 2 Canada Geese on March 19th; thankfully their visit was brief. On the same day at least 3 pairs of Magpies were nest building and the patch of Marsh Marigolds in the centre of the copse was looking superbly bright. Migrants through the spring seemed very few with no more just one or two common species on most days and 5 Willow Warblers on 16th April was the largest count during the spring. Undoubtedly the best bird for the year was an adult male Little Bittern which, typically of this species, remained elusive and skulking throughout its stay. Although it was present between 5th and 9th April it was only seen reasonably on one occasion and glimpsed on two other days. Late spring highlights included a Spotted Flycatcher on 29th May and 2 Turtle

Doves, once a regular breeding species on 25th June.

The warm summer following the flooding of the winter seemed to encourage an exuberant growth of bramble and nettle which rapidly choked and blocked the paths and rides. Keeping the paths clear during the summer has always been a tiresome chore which was eased this year with the use of a petrol brush-cutter. The copse has never been the most peaceful place as the drone of traffic on the A27 flyover and noise from light aircraft from the airport are always present but during this summer SWA contractors were busy with noisy machinery excavating and building extra water treatment facilities. Sadly the development required the uprooting of two small birch trees on the lawn.

The total of 428 birds ringed at the copse showed a small increase on 1994 but **the table opposite** shows the average catch remains much the same.

As usual autumn warblers started to move through the copse in late July but again numbers were low with ringing totals of 42 Reed Warblers, 26 Blackcaps, and 36 Chiffchaffs being the largest. Only 20 Willow Warblers trapped throughout the autumn suggests either the site no longer is attractive to this species or the species has dramatically declined in recent years. Autumn ringing highlights included two Kingfishers, a Green Woodpecker and a Nightingale.

Two other scarce species however were recorded during the autumn, firstly an Osprey flew steadily eastward over the copse and Mill Hill on 30th July and on 5th August a Camberwell Beauty was watched resting and sunning itself on an osier trunk, the latter being one of a substantial influx into Britain during early August.

The plight of finches has frequently

Summary of ringing effort and results for 1988 - 1995

	1988	1989	1990	1991	1992	1993	1994	1995
No sessions	26	19	19	9	13	16	14	16
Av. catch	45	50	52	31	32	31	37	38
Year best	253	135	94	56	53	49	70	66

been referred to in recent years so it was pleasing to see a flock of 80 Goldfinches on 30th September. Autumn migrants lingered on with a Blackcap still present on 18th November and the last Chiffchaff was seen on 2nd December. Two Roe Deer sheltering in the copse on the 2nd December were the first recorded in the area although several years ago an unidentified small deer was seen on the hillside. The weather was unseasonably mild on this date and no doubt was responsible for inducing at least 8 Goldcrests to be busy singing and displaying. Their ardour was no doubt cooled later in the month as the temperature dropped and Sussex experienced the first snow and severe cold for

several years. Late in December a Woodcock and 2 Snipe (notably fewer than used to found in harsh weather in the 1960's and 1970's) were flushed from the stream edges, winter thrushes were very evident and footprints of Badgers and Foxes were left in the thin sprinkling of snow.

As usual I would like to express the Society's thanks to the staff of the Southern Water Authority and Mr W. Schultz, the resident of the cottage, whose help and co-operation has continued throughout the year. Furthermore I would like to thank those who have helped with both the ringing programme and the management tasks at the Sanctuary.

John Newnham.

THE BOTANY OF THE SANCTUARY

The plantlife and shrubs of the Sanctuary have been studied in three main surveys - in 1954 by Col. Roberts, in 1979 by Cyril Helyer and in September 1995 by Betty and George Bishop. It is not always possible to survey the area each month and the respective studies reflect varying numbers of visits. Flora found are shown as 'x' and those not found as 'o'.

Species	1954	1979	1995	Species	1954	1979	1995
Agrimony	x	o	o	Cuckoo Pint	x	o	o
Alexanders	x	o	o	Daisy	x	o	o
Amphibious Bistort	o	x	o	Dandelion	x	o	x
Annual Mercury	o	x	o	Deadly Nightshade	o	x	o
Birdsfoot Trefoil	x	o	o	Dewberry	x	o	o
Bittersweet	x	o	x	Dogrose	x	x	o
Black Bryony	o	x	o	Dropwort	o	x	o
Black Horehound	o	x	o	Duckweed	o	o	x
Black Medick	x	o	o	Dwarf Spurge	o	x	o
Black Nightshade	x	o	o	Elder	x	x	x
Blackthorn	x	o	o	Eyebright	o	x	o
Bladder Campion	o	o	x	False Brome	o	o	x
Bramble	x	o	x	Fiddle Dock	o	o	x
Branched Burr-reed	o	o	x	Field Horsetail	o	o	x
Bristly Ox-tongue	o	x	o	Field Pansy	o	x	o
Broad-leaved Dock	o	x	x	Field Scabious	o	x	o
Broad-leaved Willowherb	o	o	x	Field Speedwell	x	o	o
Brooklime	x	o	o	Fleabane	x	o	x
Brookweed	x	o	x	Fool's Watercress	x	o	x
Bulbous Buttercup	x	o	o	Germander Speedwell	x	o	o
Burdock sp.	o	o	x	Giant Fescue	o	o	x
Bush Vetch	x	o	o	Gipsywort	o	o	x
Celery-leaved Buttercup	x	o	o	Goat Willow	x	o	x
Charlock	o	x	o	Greater Knapweed	o	x	o
Chervil	x	o	o	Greater Pond Sedge	o	o	x
Cleavers	x	o	x	Greater Tussock Sedge	o	o	x
Clustered Dock	o	o	x	Great Plantain	x	o	o
Cocksfoot	o	o	x	Great Reed Mace	o	o	x
Coltsfoot	o	x	o	Great Water-dock	x	o	x
Common Centaury	o	x	o	Great Willow-herb	x	o	x
Common Chickweed	x	o	o	Grey Willow	o	o	x
Common Dog's Violet	o	x	o	Ground Ivy	o	x	x
Common Mallow	o	x	o	Groundsel	x	o	o
Common Milkwort	o	x	o	Hairy Bittercress	x	o	o
Common Mouse-ear	x	x	o	Hard Rush	o	o	x
Common Ragwort	o	x	x	Hawthorn	o	o	x
Common Reed	o	o	x	Hawkweed Ox-tongue	o	x	o
Common Spotted Orchid	o	x	o	Hazel	o	x	o
Common Storksbill	x	o	o	Hedge Bedstraw	o	x	o
Common Vetch	x	o	o	Hedge Bindweed	o	o	x
Corn Salad	o	x	o	Hedge Mustard	x	o	o
Cowslip	x	o	o	Hemp Agrimony	o	o	x
Crack Willow	x	o	x	Herb Robert	o	x	o
Creeping Buttercup	o	x	x	Hoary Willowherb	x	o	o
Creeping Cinquefoil	o	x	o	Hogweed	x	o	x
Creeping Jenny	x	o	o	Honeysuckle	x	o	o
Creeping Thistle	x	o	x	Ivy	x	o	x
Cuckoo Flower	x	o	o	Knotgrass	o	x	o

Species	1954	1979	1995	Species	1954	1979	1995
Lady's Bedstraw	o	x	o	Smooth Sowthistle	o	x	o
Large Bindweed	x	o	x	Sorrel	x	o	o
Lesser Celandine	x	o	o	Spear Thistle	x	o	x
Lesser Water Parsnip	x	o	o	Spotted Medick	x	o	o
Marsh Bedstraw	x	o	x	Stinging Nettle	x	o	x
Marsh Marigold	x	o	o	Stinking Iris	o	o	x
Marsh Thistle	x	o	o	Sun Spurge	o	x	o
Meadow Buttercup	x	o	o	Sycamore	o	x	o
Musk Thistle	o	x	o	Teasel	x	o	x
Osier	o	x	x	Thyme-leaved Speedwell	o	o	x
Parsley Water Dropwort	o	x	o	Traveller's Joy	x	o	o
Perforate St John's Wort	o	x	o	Tufted Vetch	x	o	o
Petty Spurge	o	x	o	Tufted Water Forget-me-not	o	o	x
Pink Water Speedwell	o	x	o	Upright Hedge Parsley	o	x	o
Prickly Sowthistle	o	x	x	Watercress	o	x	o
Pyramidal Orchid	o	x	o	Water Crowfoot	x	o	o
Red Clover	o	x	o	Water Forget-me-not	x	o	o
Red Deadnettle	o	x	o	Water Iris	o	o	x
Red Poppy	o	x	o	Water Mint	o	o	x
Redshank	o	x	x	Water Plantain	x	o	x
Reed Canary Grass	o	o	x	Water Speedwell	x	o	o
Reedharrow	o	x	o	Wavy Bittercress	x	o	x
Ribwort Plantain	x	o	o	Wetted Thistle	o	o	x
Rough Meadow Grass	o	o	x	White Bryony	o	x	o
Round-leaved Fluellen	o	x	o	White Campion	x	o	o
Rowan	o	o	x	White Clover	o	x	o
Salad Burnet	o	x	o	Wild Basil	o	x	x
Scarlet Pimpernel	x	o	o	Wild Carrot	o	x	o
Scentless Mayweed	o	x	o	Wild Parsnip	x	o	o
Selfheal	x	o	x	Wild Privet	o	o	x
Sharp-leaved Fluellen	o	x	o	Wild thyme	o	x	o
Shepherd's Purse	x	o	o	Yarrow	o	x	o
Silverweed	x	o	x	Yellow Meadow Vetchling	x	o	o
Skullcap	x	o	o	Yellow-wort	o	x	o
Small Yellow Trefoil	x	o	o	Yew	o	x	o
Smooth Hawksbeard	x	o	o				

ADDITIONS - April 1996

PLANTS

Cut-leaved Geranium
Daisy
Scented Violet
Hairy Violet
Sycamore
Marsh Marigold
Wild Arum
Wood Aven
Deadly Nightshade
White Clover
Water Starwort
Annual Meadow Grass
Herb Robert
Field Forget-me-not
Yew
Beech

MOSSES

Amblystegium serpens
Bryum capillare
Brachythecium rutabulum
Cratoneuron filicinum
Eurhynchium confertum
Eurhynchium praelongum
Fissidens taxifolius
Funaria hygrometrica
Leptodictyum riparium
Orthotrichum affine
Orthotrichum diaphanum
Rhynchospora tenella
Thuidium alopecuroides
Zygodon conoideus

Lophocolea cuspidata
Metzgeria furcata

LICHENS

Evernia prunastri
Hypogymnia physodes
Lecanora pallida
Lepraria incana
Parmelia caperata
Parmelia subrudecta
Parmelia sulcata
Physcia orbicularis
Physcia tenella

LIVERWORTS

Frullania dilatata

GARDEN BIRD FEEDING SURVEY - WINTER 1995/6

17 members took part in this winter's survey that included several new gardens.

They were from Worthing (2), Findon (2), Shoreham (4), Storrington (2) and one each from Southwick, Steyning, Lancing, Goring, Ferring, Hove, and Brighton with coastal, suburban and semi-rural inland sites represented.

The weather during October was unsettled but mild in the second half. November was miserable being colder and dull with a good deal of rain. This was followed by a drier spell but still cold around Christmas with the banks of the Adur frozen and a piercing east wind. January began dull, misty and damp, a feature of much of the winter with a short fine spell in mid month. It then became very cold with snow in the last week and a persistent easterly wind set in. This gradually gave way to blustery westerly weather in mid February and it was windy wet and cool at the end of the month. March was again dull and chilly until the 16th when it briefly became mild only to revert to NE winds but brighter conditions as the month closed.

The relative abundance of the top twenty species recorded (all over 1%) was as shown in the Table below.

The most notable event was the large influx of Redwings and Fieldfares that took place in January when very low temperatures and widespread frost covered much of the continent driving these northern visitors in unprecedented numbers into Britain. Also coincident with this arrival were unusually large numbers of Waxwings and Redpolls to eastern and northern parts of the country but although some reached Sussex unfortunately none were seen in any of the gardens covered by the survey. Most of the winter thrushes were recorded in the Champion's Brighton garden (55 Redwings and 250 Fieldfares in February), the Findon Valley, Ferring and Storrington with odd ones and twos elsewhere along the coast.

The presence of Blackcaps in seven gardens spread through the period was interesting and a sign of the species' increasing inclination to move here from the continent rather than go south.

It was nice to see both large woodpeckers again in the list though the more woodland oriented Nuthatch and Tree Creeper were only found in Storrington. Conversely, Pied Wagtails and both gull species were only attracted to gardens

Relative Abundance of Top Twenty Species Recorded

Species	%	Species	%
1 House Sparrow	26.3	11 Dunnock.....	2.4
2 Starling	21.7	12 Chaffinch.....	2.4
3 Fieldfare.....	5.3	13 Robin	2.1
4 Greenfinch	5.1	14 Great Tit.....	1.8
5 Blackbird.....	4.7	15 Woodpigeon.....	1.7
6 Black-headed Gull.....	4.2	16 Song Thrush.....	1.6
7 Blue Tit	4.1	17 Wren	1.4
8 Redwing.....	4.0	18 Goldfinch.....	1.35
9 Collared Dove	3.3	19 Long-tailed Tit	1.3
10 Magpie.....	2.5	20 Carrion Crow.....	1.2

south of the Downs. It was encouraging to note Song Thrushes at so many sites but the October total was boosted by 15 in one garden inland (not mine!).

The widespread occurrence of Goldcrests, albeit in single figures, may also be related to continental immigration and it was surprising the more robust Chiffchaff only showed up at three sites especially as fair numbers appear to winter in Sussex these days. It was a very poor winter for Siskins with just singles at three sites. Again a Marsh Tit made the list at Sylvia Denman's Hove garden. Reed Buntings only appeared there and at the Ford's Ferring site.

A Carrion Crow to was seen to wreck their Magpie's nest by the Maskells in Worthing - a case of the biter bit! The absence of Blue Tit, Greenfinch and Collared Dove from Carol Wingate's garden in

Worthing stopped them making an appearance in all 16 but as she says local conditions conspire to dissuade them. Nevertheless a supply of peanuts would possibly bring in the occasional visitor. House Sparrows are only missing from Brian Stow's Storrington garden, a situation he may not wish to remedy!

Most species (29 and 27) were found at the Hopes in Storrington and Sandisons and Fords in Findon and Ferring respectively but the most birds in total were recorded at the Champion's Brighton plot with a massive 400 in February largely thanks to the big Fieldfare flock. Over 100 were seen at Brian Stow's Storrington garden in both January and February.

The total number of species recorded feeding from all seventeen gardens was 44, of which at least 32 actually took food or water provided.

Species Recorded with Total Numbers of Gardens Reporting Each Species

Species	Gdns	Total Max					
		Oct	Nov	Dec	Jan	Feb	Mar
Robin.....	17	21	18	26	28	31	27
Blackbird.....	17	50	48	58	58	66	55
Starling.....	17	178	265	388	304	242	179
House Sparrow.....	16	233	290	350	274	233	231
Blue Tit.....	16	43	52	62	57	57	50
Greenfinch.....	16	35	55	56	72	74	70
Collared Dove.....	16	35	40	44	40	39	39
Dunnock.....	15	19	27	27	31	33	35
Song Thrush.....	15	23	14	15	18	23	19
Wren.....	14	15	18	17	19	17	16
Chaffinch.....	13	20	20	26	37	32	36
Great Tit.....	13	14	21	22	23	26	24
Magpie.....	13	21	29	37	32	30	25
Woodpigeon.....	11	19	20	18	16	23	27
Redwing.....	9	0	1	11	101	103	68
Carrion Crow.....	9	13	8	15	21	17	13
Goldcrest.....	8	6	8	8	7	3	7
Goldfinch.....	8	39	10	7	11	13	17

Species	Gdns	Total Max					
		Oct	Nov	Dec	Jan	Feb	Mar
Pied Wagtail	7	1	3	6	7	6	6
Black-headed Gull	7	32	37	81	58	73	22
Long-tailed Tit	7	23	18	12	15	15	12
Green Woodpecker	7	4	5	5	5	5	4
Blackcap	7	2	4	5	4	4	1
Fieldfare	7	0	0	0	34	293	51
Coal Tit	5	5	8	8	8	9	9
Herring Gull	4	3	1	3	2	6	5
Sparrowhawk	4	1	1	2	2	2	1
Siskin	3	1	0	1	0	0	1
Jackdaw	3	6	0	3	6	3	1
Kestrel	3	0	1	1	2	0	0
Gt Spotted W'pecker	3	4	2	3	3	3	4
Chiffchaff	3	0	0	1	1	1	3
Nuthatch	2	3	3	3	2	2	5
Rook	2	0	0	0	0	0	5
Treecreeper	2	2	2	2	2	2	3
Mallard	2	0	0	0	0	3	5
Feral Pigeon	2	2	3	3	4	4	6
Mistle Thrush	2	2	1	3	5	3	2
Reed Bunting	2	0	0	1	3	5	3
Jay	1	2	2	2	4	4	4
Grey Wagtail	1	0	0	1	0	0	0
Heron	1	0	0	1	1	1	0
Marsh Tit	1	0	0	1	2	1	1
Tawny Owl	1	0	0	0	0	0	1
All Species:		877	1035	1335	1319	1507	1093

ALL the records are valuable and as the reports indicate, the chance of something unusual turning up is not confined to any one type of garden or area. The decline of the humble House Sparrow in many areas nationally makes the recording of all species meaningful. Thanks to everybody who took part; for those with 'new' gardens it will be interesting to see how they develop bird-wise. Next year I would like to see 50 participants - we have the member-

ship and it doesn't take much effort as I know most of you feed the birds anyway.

Clive Hope

Survey participants were:

S R Allen, B Antonini, S Bickham,
G L Champion, D Culpitt, S Denman,
R Edney, A & J Fenton, M & P Ford,
C E & P Hope, H Jackson, C Leeves,
J and S Maskell, P R Maynard,
R J & A Sandison, B Stow, C Wingate.

JOHN STAFFORD'S RETIREMENT

Dr John Stafford's retirement as President of the SDOS ends a remarkable period of 44 years as the Society's leader. He has presided over a period of extraordinary change and growth in birdwatching locally and generally. His vision, energy and enthusiasm inspired many in the early 1950's to take up birdwatching seriously and we are all indebted to him for putting Shoreham on the ornithological map.

Few of the people who were encouraged by his leadership in those early days are still with us and not many present-day birdwatchers, or birders as many prefer to be called, would appreciate how different things were then. I was a 13 year old schoolboy at Steyning Grammar School, living in Southwick, who joined the Society when it started in 1953. John Stafford and the Shoreham Society were just what I needed to inspire me and they provided an outlet and a focus for my own passion for birds. Many others, young and old alike, were to be similarly guided and helped in their hobby, then not at all fashionable.

In 1952, he and a few friends had felt that Shoreham needed a society for birdwatchers to meet and talk about birds and a few tentative meetings had been held. Although there were several natural history societies in Sussex, none were concerned just with birds. In January 1953, the Society was formally launched and by the end of that year had 44 members.

The group who started the society under John Stafford's direction were Catherine Biggs, its first Secretary, and Norman Smith and George Rampton who together were its Council. The initial subscription was five shillings (25p) and the accounts reveal that at the end of the first year, total expenditure was £11-16-9½, with a balance in hand of £1-15-2½.

The first annual report shows that in its first year, there were four indoor meetings with films or slides and four field trips. Duck counts at Amberley Wildbrooks were made in the winter months by John who took three members with him in his car. The sanctuary at Mill Hill was established. Several members took up ringing there and in their gardens. "The only complaint, if we may make one", says an editorial note, "is that members tend, during the summer months, to be rather slow in passing round their copies of British Birds"

The report, a modest 14-page stencilled publication, was full of interesting and useful records, reports and articles and was compiled by John himself. An annual report followed in this format every year, with a cover sketch of a Swallow until 1958 and different styles subsequently.

This unpretentious report reflects the Society and its founders. In an unassuming way, they achieved so much. Those were the days when there were no field guides - Peterson did not appear until 1954. Few people had cars or phones. Rare birds really were rare. News travelled very slowly. Field identification was fairly basic, without the books to tell us about tertial lengths and primary projections which we now have. The tiny number of natural history programmes shown on television were in black and white. Twitching was not in the birdwatchers' vocabulary and a rarity might attract a dozen people.

Yet the members' raw enthusiasm and their will to learn was soon channelled into rewarding and productive work in finding out more about the birds of the Shoreham area and beyond. John Stafford quietly and gently fostered this and his patience and kindness were well rewarded.

He was the natural choice to be Presi-

dent of the Sussex Ornithological Society when the county society was founded in 1962 and he steered it through its important first four years. On the national stage, he was a member of the RSPB Council for five years in the 1950s.

John Stafford has provided continuity and stability for the Society for more than four decades. Such a tenure is unlikely ever to be repeated. We wish him well as he retires from office and thank him for all he has done for Shoreham and for Sussex.

Tony Marr, April 1996

KNOW YOUR AREA BETTER SOMPTING BROOKS AND SURROUNDING AREA

Since 1990, I have regularly watched the area of land separating Sompting and Lancing from East Worthing, from the top of the Downs at Lambley's Barn across to the Mountain and down to the railway line (TQ 1604)

The habitat north of the A27 around Sompting Church comprises primarily agricultural land with significant hedgerows and small areas of rough ground. A variety of footpaths give suitable viewing of this area. South of the A27 is a block of grazed land which includes an area now leased by Adur District Council comprising mixed rough scrub adjacent to the new Sompting Mews housing development. Unlimited access is generally available in this area. To the south of West St is a larger block of agricultural land which can be viewed from the roads. At the eastern end a line of mature trees and scrub lead down to a significant reedbed in the SE corner. Access to this area is at best difficult - Adur and Sompting Estates are currently seeking some solution. Options include: through the farmyard with permission, or viewing across the gardens which back onto it. Finally a stream runs down the western side and discharges into Brooklands.

The majority of observations have come from systematic autumn migration

counts - these vary considerably from year to year due to my personal commitments, but many notable sightings have been made. Initially, the downland proved very productive - but in recent years the area immediately south of the A27 has been most covered, mainly due to the small area of superb habitat present. However the area is worth a look at most times of the year.

Winter: usually very quiet - Merlins have been noted apparently coming off the downland to roost in the reedbed but most excitement is caused by hard weather, such as in 1991 when large numbers of Fieldfares fed with occasional Lapwing, Golden Plover and Ruff. Herons are sometimes noted hunting on the fields while Kingfisher has been noted once. The reedbed area can hold Chiffchaff, Stonechat and Black Redstart, and Bearded Tits were reported one December.

Spring: very few observations (due to my seawatching commitments!) but indications are that this could be a very productive time with most common migrants passing though as well as Whinchat, Pied Flycatcher, Nightingale, Black Redstart and Marsh Harrier and I have heard of previous records of Hoopoe.

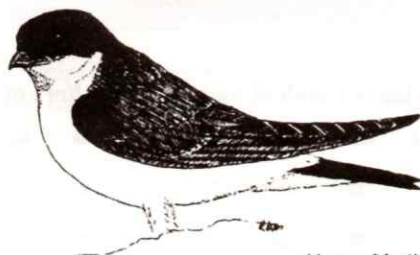
Summer: again very underwatched, but the survey of 1987 found 29 and 17 pairs of Reed and Sedge Warbler respectively. Of interest were both Wheatear and Yellow Wagtail present during June 1992. Ringed Plover have bred (in pea fields) while Barn Owl used to (a pair was introduced in 1990 and bred in the following year, but I have never seen them!). Wandering Hobbies often put in an appearance, while in 1995 a Cormorant roosted on the pylons.

Autumn: by early August, the first warblers are passing through the area, with Whitethroat and Willow Warbler being the most conspicuous. By mid-month these are joined by a wide range of other species, particularly *sylvia* warblers, Spotted Flycatcher, Wheatear, Whinchat and Yellow Wagtail, the latter three species particularly favouring the area to the south of the A27. Spotted Flycatchers were most conspicuous in 1990 when a massive 91 were counted around Lambly's Barn on one day. The added bonuses of watching over the downland are the large raptors - since 1990 no fewer than 2 Osprey, 8 Marsh Harrier and 3 Honey Buzzard have been noted, along with numerous Hobby, Peregrine and Buzzard. Additionally, the area's 4th Alpine Swift passed over in 1993. By early September, the passage is at a peak with counts of chats comparable to any in Sussex: in 1991 over 400 Wheatear and 200 Whinchat (including

the largest site day total in Sussex since 1982) passed through, while Yellow Wagtail exceeded 350. Redstart were quite scarce in the early years, but 1995 saw daily sightings particularly in the Sompting Mews area. Throughout the month large movements of hirundines occur, while Willow Warblers are gradually replaced by Chiffchaffs and Blackcaps and larks, wagtails and pipits become more numerous. Pied Flycatcher and Black Redstart occur annually in small numbers while Red-backed Shrike has occurred twice and Nightjar once. Also Wryneck is reported to have appeared in local gardens in the past. By October the main passage is overhead in the form of larks and finches. This month has only been systematically watched once (1991) but visits found Goldcrests, and occasionally Firecrests, joined by Ring Ouzels in the scrub, while anything could occur overhead; highlight was a party of 8 Snow Buntings which twinkled their way westwards one morning. There's plenty of potential.

All of these sightings are from a site which I had previously passed though daily and which I only looked at more closely following a chance encounter with a Wheatear one morning. It gives a good illustration of what regular watching of a local patch can produce - try it, you'd be surprised!

Paul Brayshaw



House Martin

WORTHING SEAWATCHING REPORT FOR 1995

Introduction.

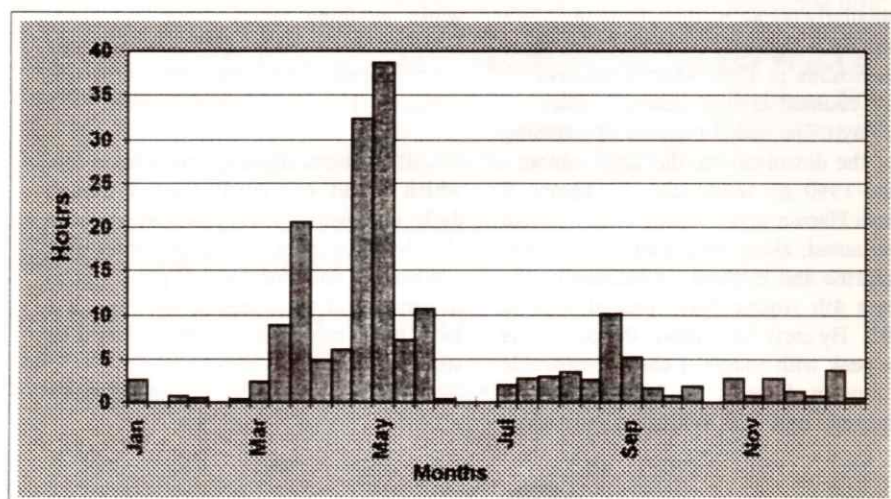
During 1995 the sea-watching log revealed a total of 182 hours of watching showing yet a further 20% reduction in effort from 1994 and continuing the trend demonstrated in the report for 1994. This brief report however, maintains an unbroken run since 1978 of 18 consecutive compiled sea-watching reports; an achievement unsurpassed by other watching locations in the county. Furthermore the records have been computed on a 10 day basis from 1978 and with computerised records on a daily basis since 1986. In keeping with

past years most sea-watching was done during the spring (March to May) and the figure A below demonstrates this clearly.

Although there was a 20% reduction in the watching effort there was a greater (30%) reduction in the total number of birds recorded. The table clearly shows however that 92% of the birds seen were in the spring months which reflects the poor effort and absence of good autumn watches.

As in previous years, a daily log was passed around the observers for the period 14th April until 28th May and, as usual,

Figure A: Seawatching at Worthing 1995
Hours watched in 10 day periods



Hours watched and total numbers of birds seen

	Jan	Feb	Mar	Apr	May	Jun	Jul	Aug	Sep	Oct	Nov	Dec
Hours	3	1	32	43	57	.3	8	16	8	5	5	5
Total	144	3	2989	8124	4348	14	80	357	280	176	322	11

most observations took place from the shelter opposite Marine Gardens, West Worthing but watches are included from other sites such as Ferring beach, Goring beach, Worthing pier, and Brooklands beach.

Several watchers were present, especially in periods of south-east winds during spring but particular thanks go to the following observers who have contributed records to the daily log which form the basis for this report.

P.M.Brayshaw; R.Edney; C.E.Hope;
R.A.Ives; J.A.Newnham; R.J.Sandison;
D.I.Smith; R.Tofts.

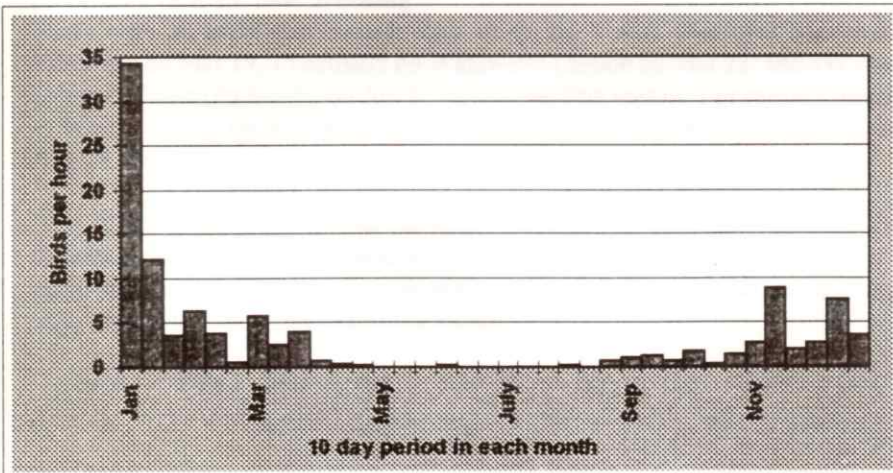
Cronological Account

The year started well as a brief watch during the late afternoon of 4th January yielded an eastward movement of 44 Kittiwakes, 23 auks, 2 Arctic Skuas, a Bonxie and an unidentified tern. Thereafter, very little watching was done until 10th March when a strong SSE wind induced a large movement of wildfowl and 540 assorted ducks and geese were seen in just over 2

hours watching. The true magnitude of this movement was seen further east such as at Seaford where over 3000 ducks and 112 Avocets were recorded in 7.5 hrs watching. Spring movements of marsh ducks are most frequent in early March; but figure B, showing the rates of passage for all 5 common species (Wigeon, Pintail, Shoveler, Teal and Mallard) during nearly 7,500 hours observations, reveals that the winter movements are more regular and impressive.

The only other good wildfowl movement occurred on 22nd March when 440 Common Scoter, 90 Red-breasted Mergansers and 170 Brent Geese passed eastward but, in keeping with most years there were no more good spring movements until late April. For most of the regularly seen species the peaks occurred during late April and early May with 60 Little Gulls and 217 Sandwich Terns on 23rd April, 1283 Commic Terns on 29th April, 678 Bar-tailed Godwits on 30th April and 115 Little Terns on 2nd May. Perhaps the regular species most "hunted" during the

Figure B: Marsh ducks passing Worthing 1978-95
Rates of passage per hour



spring sea-watches is the Pomarine Skua and although 24 and 15 passed east on 2nd and 4th May respectively the numbers seen from this site were fewer than both Selsey Bill and Seaford Head.

If sufficient hours are spent sea-watching then scarce and unusual species will be seen and 1995 was no exception. The very nature of viewing passing birds means the views are often short and in some instances too brief to make a sure identification, thus the records of a short tailed lark which flew northward on 29th April and a small stint like wader which sped eastward on 1st May will never make the archives. Surprises included an adult Sabine's Gull which flew east with 2 Common Terns on 30th April and on May 1st a Puffin, 3 Little Ringed Plovers and a Manx Shearwater which was watched in calm conditions flapping along the tide-line. The same bird was seen also at Selsey Bill, Seaford and Dungeness. Mediterranean Gulls were seen regularly with a peak of 4 first year birds noted passing westward on 27th May and Little Egrets, another once rare species, were recorded flying eastward on 1st and 4th

May and a small party of 5 were seen arriving from the south-east and coasting westward on 2nd July.

The preceding table shows that very little watching was done after May and even periods of strong winds in the autumn and cold spells in the winter were not watched. Thus there were no large movements of wildfowl, terns, Kittiwakes or auks recorded. Observations which deserve a mention include a Peregrine seen coasting eastward on 7th September and a late westbound Hobby on 7th October. On 4th Nov 2 Little Auks flew over the promenade, a Purple Sandpiper flew west at Ferring and a distant swan, resembling a Whooper, passed eastward. Finally an early morning observer on 5th November noted several Little Auks amongst a passage of auks, only one Little Auk was seen later in the morning and a Shag was seen on 19th December.

As usual a few records of passing Cetacea were gathered and passed to the national group studying the movements of these marine mammals in British waters.

John Newnham

STEYNING RINGING GROUP REPORT 1995

The operations of the group have consolidated back to the two sites, 'The Mumbles' at Steyning, and the scrubland site at Cissbury, owned by the National Trust.

This site from May through to August is netted in the 'one day in ten' 'constant effort' basis, although not part of the BTO scheme due to the changes in habitat and the resultant management work that is now taking place.

Cissbury Management

The management work started, almost on an experiment basis, in late winter. Dense scrub adjacent to some of the net sites was thinned out and individual bushes removed to develop a ground vegetative layer. The general height of scrub in other areas was reduced by removing sapling Ash and Sycamore. A couple of small very dense areas were cleared completely.

To make these operations possible the National Trust gave permission for the use of chain-saws on the site, and this dramatically altered the extent of the work carried out. The work continued in the Autumn and was made possible by David King utilising his 'day off' from being a Ranger on Ashdown Forest to come and chain-saw at Cissbury (chain-saw operatives have to hold the necessary certification). Volunteer help and members of the ringing group did the clearing up on the following Saturday or two. Dave Buckingham and Vic Oliver, the local National Trust warden, provided extra chain-sawing help on one occasion each. It then took several working parties to complete the clearing up (more volunteer help ALWAYS welcome as more sessions are planned for this winter. Help is required on either Fridays or Saturdays. Please phone 01903 815889 for details).

Cissbury Ringing

A total of 1393 birds were ringed at Cissbury, 331 being caught during the Constant Effort (CES) sessions, but the figure includes birds caught in non CES nets. Highlights included seven Firecrests, five Redstarts, and one each of Nightingale and Wood Warbler. Only one Sparrowhawk was trapped. For the fourth consecutive year no Yellowhammers were ringed, and Sedge Warbler was at a disastrous low of two. Blackcap, the most typical bird of the habitat, provided the highest total of 314 with a peak catch of 70 on the 16th September. Whitethroat and Lesser Whitethroat both increased slightly but follow the national trend. The Willow Warbler total of 101 was down by over 50% on the previous year.

Observations From The Ringing Table

During ringing sessions the ringers and more often the visitors always keep eyes open and ears cocked for any other birds that are around. Some of the highlights included regular Sparrowhawks; a Buzzard on the 26th August and three in the same view on the 23rd September; Peregrine on the 27th October and a pre-migration feeding flock of 2000 Swifts on 28th July. Yellowhammers were heard in song from the site but none were caught. A Redshank came over on the 5th of August. Tree Pipits and Yellow Wagtails were noted and a single distant Short-eared Owl was seen on the 21st October.

The Mumbles

The number of birds ringed was slightly down at 557 and included only 48 Reed Warblers. Sedge Warblers further declined to only three birds, compared with over 70 annually in the mid 1970's.

Ringing highlights included Sparrowhawk, Cuckoo, three Kingfishers, two Great Spotted and three Green Woodpeckers, and three Nightingales.

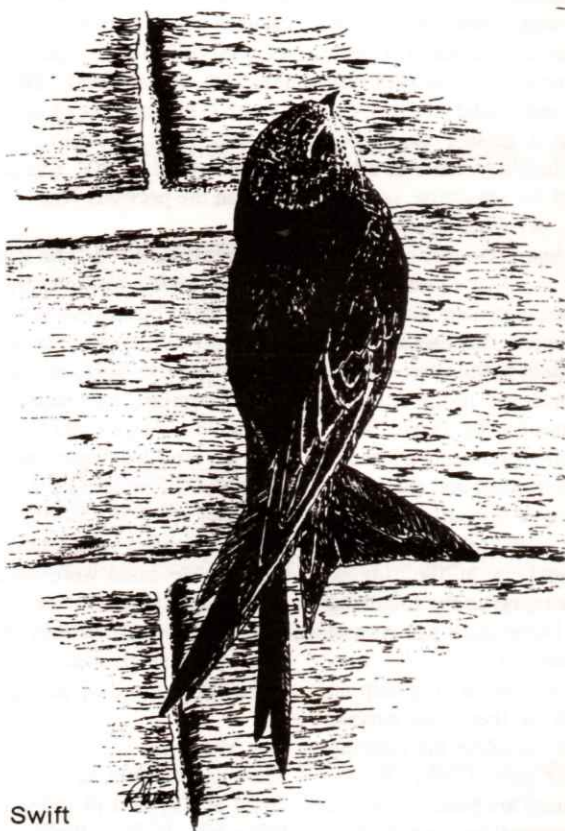
Members of the County Society and some local people enjoyed an 'Open Day' on the 22nd July when the reserve opened for interested parties to drop in, look around and watch birds being ringed. Lesser Whitethroat, Nightingale and Cuckoo were all seen in the hand.

The usual willow pollarding, hawthorn coppicing and stream clearance tasks were undertaken during the year.

Acknowledgements

Thanks to the management team of David King, Charles Hutcheon, Steve Limbury and David Golds and also to Vic Oliver and the National Trust for their continued co-operation and help at Cissbury.

Phil Clay



Swift

SDOS FIELD OUTINGS 1995

January 14 saw the year off to a good start when 25 people, led by Tony Fenton, spent a morning at Apuldrum, Fishbourne and Dell Quay and recorded 60 species. Notable were 300+ Brent Geese, 3 male Goldeneye, 3 Little Egret and 1 Avocet. A cup of coffee afterwards in Apuldrum Church car park was also productive as 3 Bullfinch, 1 Treecreeper, 1 over-wintering Chiffchaff, 2 Goldcrest, 1 Coal Tit and 6 Long-tailed Tit were enjoyed.

February 12 saw Bernie Forbes lead one of the most popular field trips of the year when he escorted 34 people around Shoreham Harbour, the Fort and the Lower Adur Levels. This produced 6 Red-breasted Merganser, 4 Purple Sandpiper, 34 Turnstone, 1 ad Mediterranean Gull and 1 Black Redstart. In the afternoon, 36 people were escorted around the Upper Adur Levels from Woods Mill to Wyckham Wood with highlights being 14 Bewick's Swans, 6 Tree Sparrow, 1 Green Sandpiper, 4 Golden Plover and several Fieldfare and Redwing.

A calm slightly misty, but otherwise fine and bright day greeted 22 members led jointly by Tony Fenton and Hazel Jackson at Littlehampton West Beach, Climping on April 30. Good numbers of returning migrants were seen among the total of 59 species recorded. House and Sand Martin, Swallow and Swift were all noted with 3 Cuckoo across the golf course. Sandwich Tern, 4 Little Tern, several species of wader, 4 Wheatear, 2 Redstart and 3 Whinchat were also enjoyed. No less than 8 species of warbler were logged with the highlight being a stunning Wood Warbler in full song close above our heads in a tree near the Mill House. This gave excellent views to the members who stayed on late morning and was a first in Sussex for many.

May heralded an early start for 8 members for the annual Dawn Chorus at Wis-ton with Chris Fox when the usual songsters were recorded.

On May 21, Bernie Forbes led at least 20 members on a morning walk through Iping and Stedham Commons. Raptors were much in evidence with 3 Sparrowhawk, 1 Hobby, 1 distant Buzzard and one very long range Goshawk all recorded. Others of interest included 2 pairs of Woodlark, 3 pairs of Stonechat, 3 singing male Dartford Warblers, 2 Tree Pipit, 1 Garden Warbler together with flying Siskin, Turtle Dove and Nightjar briefly.

On June 4, Richard Ives led a 6 mile walk through the New Forest at Telegraph Hill. Most memorable again were the raptors with 6 species recorded, including stunning views of a male Montagu's Harrier. As well as 4 Common Buzzard, a reasonably distant Honey Buzzard caused great excitement and was very distinctive, gliding on downward bowed wings. Also notable were 2 Hobby, 6 Dartford Warbler, 1 Tree Pipit, 6 Wood Warbler, 6 Redstart and 2 Hawfinch. Deciding on a short cut for the return to the car park, the leader took a route through some woodland. After trudging around for about a mile and a half, the group exited some three-quarters of an hour later, a few yards from where they started. The leader, his pace quickening all the time, rapidly explained that we had at least put on a further three woodland species.

The evening meeting on July 1, saw a joint effort by Tony Fenton, Clive Hope and Tony Bullock. Noted at Waltham Brooks, were several singing warblers and a Barn Owl near Greatham Bridge. Nearby, as the light began to fade, Tawny Owl, Woodcock and a churring Nightjar were all recorded to the satisfaction of the

members present.

September 9 saw Dave Smith lead a group of 18 members around the Pagham area. At the Ferry Pool with the feeding Dunlin were juvenile Little Stint. Around the Harbour, Little Egret exceeded Grey Heron by 12 to 6. A large covey of 21 Red-legged Partridge were viewed for sometime flying in and marching off across the fields. Also recorded were Whimbrel, Greenshank, Spotted Redshank and Peregrine.

On October 8, Brian Clay gave some members a close view of the ringing of birds trapped early in the morning at Cissbury Ring.

Clive Hope took a party of 15 members on a mild but blustery and showery day around Thorney Island on November 25. Memorable was the exceptionally high tide which occurred around mid-day, one of the highest of the year. Some 64 species were recorded commencing with a very

close view of Peregrine with 30+ Little Grebe, 15 Little Egret and 25 Red-breasted Merganser also notable. In addition 7 Goldeneye (1m and 6f), 40 Pintail, around 50 Golden Plover, 350 Black-tailed Godwit, 6 Greenshank and 4 Spotted Redshank also entered the notebook.

Stanley Allen's annual anti-hangover outing on December 27 produced both good weather and good birding. Purple Sandpiper, Eider, 8+ Great Crested Grebe, a Guillemot off the West Arm and Little Gull briefly were noted from the Fort. Walking up from the footbridge towards the Airport produced good close views of a male Reed Bunting, 5 Wigeon landing on the river nearby and c50 Golden Plover taking flight from the Airfield.

A good year's birding with a total of 135 species recorded on SDOS outings.

Tony Fenton/ Hon. Field Secretary

REPORT ON INDOOR MEETINGS - 1995

We were pleased to welcome Tim Callaway in January to tell us what has happened at the RSPB Pulborough Brooks Reserve since his talk to us in 1992 before the Reserve was opened to the public. His enormous enthusiasm for his work, the knowledge and understanding required by a warden and the success of the new reserve was amply illustrated both by what he said and his slides.

In February, Graham Walker came from Wales to tell us about the Cambrian Holidays he organises from his home in Rhydlewis in Dyfed. It was obvious he knew his area extremely well, and where to go to get the best views any time of the year. Sometimes you needed a good head for heights to view the seabirds! He was a lively speaker with excellent slides.

Phil Belden, the countryside manager for the Sussex Downs, was the speaker in March. He left us in no doubt about his great love for the Downs and the very definite way in which they should be managed. His slides showed many places we know well and also many of the plants and birds we could expect to find as we explore the Sussex countryside.

After the AGM in April, Dennis Bright stepped in at short notice to give us an excellent talk on Titchfield Haven - a haven for wildlife. His slides were outstanding, though he said many times, "I shot off six rolls of film....!" Dozens of different superb photographs from Great Spotted Woodpecker to Spoonbill were memorable but the Kestrel in flight overhead in a force 4 gale was breathtaking. There is no

doubt some members will be visiting Titchfield Haven as a result of this excellent lecture.

Keith Noble, RSPB Youth and Volunteer Officer for the South-East, talked to us in October on the Wildlife of the Adur Valley and the Downs. He reminded us of the amazing diversity of nature we have in our local area. He is knowledgeable, a lucid and fluent speaker with very good slides and he made us realise the importance and beauty of what we have on our doorstep and how we dare not take it for granted.

Mike Read spoke to us in November about the Barn Owl "Under the Cloak of Darkness" (a talk to coincide with the publication of his second book with the same title). The exclusive photography showed the Barn Owl in all seasons of the year, the reasons for its decline and the hopes for improved fortunes in the future. A talk with serious information given in an interesting and light-hearted manner backed by copious slides.

The Members' Evening was a very lively occasion with contributions from Chris Mulcock, Trevor Rackstraw, Audrey Wende and Hazel Jackson. Chris and Trevor could obviously entertain us for a whole evening on another occasion such is their enthusiasm for Australia and Costa Rica! Hazel recounted some of her experiences with birds on the islands around Britain. Audrey supplied an entertaining and thought-provoking game to name birds which caused a good deal of hilarity and even frustration! Refreshments were enjoyed by everyone.

This was our last meeting in St Giles' Church Hall as membership has increased and we move to a new venue, St Peter's Church Hall in West Street in 1996.

I should like to thank members of the Committee and those who have helped with the raffles and refreshments at meetings. Your support is appreciated and the SDOS could not exist without it.

Brianne Reeve

TWENTY-FIVE YEARS AGO

Rarities in 1970 included a Pectoral Sandpiper on Sep 26 near the Toll Bridge, coinciding with a peak of 10 Curlew Sandpipers. Grey Phalarope on Brooklands lagoon stayed between Nov 22-25 and was well-watched. Two Tawny Pipits were on Tenant's Hill, Worthing on Aug 27. Of interest were breeding Cirl Bunting at Steyning and another singing male at Lancing!

Some negative observations were only three species of raptor listed, i.e. no Hobby, Merlin, Peregrine or harrier and a distinct lack of seabirds recorded meant

that seawatching hadn't yet caught on. Membership was 163 and the annual fee was 10 shillings, inclusive of the annual report.

Included in the summary was this useful note:

"The first thing we all have to learn is to be our own most severe critic. The second is to write down what we see as soon as possible. Only then can we begin to identify species with the degree of accuracy backed up by evidence which will make instant appeal to any recorder".

SUBMISSION OF MEMBERS RECORDS

It would be a great help to the Recorder if members could send their records throughout the year and not in a large batch in January. Please aim to send in all your records by the end of January. A reminder that the following is the preferred format in which records should be sent.

SPECIES	DATE	LOCALITY/NOTES	NUMBER	OBSERVER
---------	------	----------------	--------	----------

It would be greatly appreciated if records could be submitted in standard 'Voous order' (i.e. the order of this report, your checklist or field guide) not, for example, in order of sightings on a field trip. As the records log is held in this order it really does save a lot of time and effort.

Rarities should have full supporting notes and it would again assist greatly, when sending in a rare or unusual bird record, if the observer could state whether the description has been forwarded to the County Recorder (either for consideration by the SOS Records Committee or the BBRC if it is sufficiently rare to require their adjudication). There is no need to go into minute detail for those birds considered 'unusual' but those records should contain enough salient points to confirm an accurate identification. A list of unusual species is published annually in the Sussex Bird Report and also in a paper published by the SOS in 1978 entitled *Identification, Note-taking and Reporting*. This is an essential guide to every birdwatcher, whether a beginner or experienced observer. I believe copies are still available from the SOS.

Please keep your records pouring in so that the quality of this report can be maintained.

Rod Shaw/Hon Recorder

EDITORIAL FOOTNOTE

I began by helping Peter Whitcomb to produce this report and following his resignation due to pressure of work, I have completed it as acting Editor. I know it is not perfect, but if I waited until it was, it would never come out. I would like to thank Brian Clay for help and advice, sorting out John Newnham's charts, and arranging the final production through Adur District Council. I would also like to thank my husband, Chris, for scanning all the excellent artwork, helping me check the proofs and making many helpful suggestions. I hope there are not too many mistakes but without his input there would be many, many more.

Pat Mulcock

OFFICERS FOR 1995

President	Dr J Stafford
Hon Secretary	Mrs B Reeve The Old Rectory, Coombes, Lancing. Tel: 01273 452497
Hon Field Secretary	Mr A Fenton 14 Rosemary Drive, Shoreham-by-Sea Tel: 01273 591291
Hon Treasurer	Mr A D Bullock 65 Roman Road, Steyning Tel: 01903 815644
Hon Recorder	Mr R Shaw 93 North Road Portslade-by-Sea Brighton BN41 2HD Tel: 01273 422485
Hon Report Editor	Mr P J Whitcomb 99 Barnett Road Brighton BN1 7GJ Tel: 01273 500416
Chairman of the Council	Mr B Forbes
Sanctuary Committee	Dr J A Newnham Dr A B Watson
Other Committee Members	Mr D Labdon Mr T Hicks

RECEIPTS AND PAYMENTS ACCOUNT **For The Year Ended 31 December 1995**

	1995	1994
	£	£
RECEIPTS		
Balance brought forward	3,697.24	3,847.79
Subscriptions	1,048.00	717.50
Sale of books, reports and cards	41.36	20.50
Net raffle and refreshment receipts (including barbeque)	107.25	71.26
Building society and bank interest	132.94	20.98
Proceeds of Sponsored Walk	-	50.00
Contribution to trees	227.80	50.00
	<u>5254.59</u>	<u>4778.03</u>

PAYMENTS		
Printing	531.46	309.00
Postage and stationery	171.34	164.20
Secretary's expenses	14.49	44.91
Hire of hall	98.00	98.00
Southern Water	4.00	4.00
Speakers' fees	252.00	165.68
Sundries	52.39	30.00
Purchase of screen and table	100.00	-
Purchase of seat	130.00	-
Donation to trees on Widewater	-	265.00
Balance carried forward	3,900.91	3,697.24
	<u>5,254.59</u>	<u>4778.03</u>

A D Bullock (Hon. Treasurer)

Dated 2nd March 1996

ACCOUNTANTS' REPORT

In accordance with instructions given to us, we have prepared without carrying out an audit, the above receipts and payments account from the accounting records of Shoreham District Ornithological Society and from information and explanations supplied to us.

MOORES ROWLAND
Chartered Accountants
BRIGHTON
Date 7th March 1996